

Advanced TCP/IP Data Logger

1 **1**

1 Advanced TCP/IP Data Logger 1

2 2

2 **4**

1 4

2 5

3 5

4 6

3 **6**

1 6

2 6

4 **7**

1 7

2 8

3 10

4 11

5 11

5 **12**

1 12

TCP/IP 12

2 19

..... 19

..... 22

..... 23

3 - 24

- 24

- 28

..... 29

4 30

..... 30

OPC 34

5 38

..... 38

..... 40

..... 41

Windows 2000 42

Windows Vista 45
..... 46

6

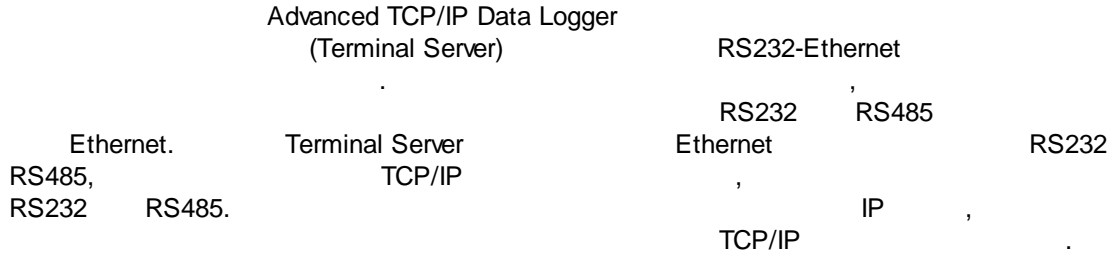
?

47

1

..... 47

Advanced TCP/IP Data Logger



-
-
-
-
-
-
-
-
-
-
-

: <http://www.aggsoft.ru/>
 : <http://www.aggsoft.ru/tcpip-data-logger.htm>

1.2

ASCII - ASCII -
 Windows
 ASCII. ASCII *.TXT (
 README.TXT).

Binary File - , ASCII (0 255).

Bytes () - , .

Bit () - : 0 1. 8
8 () .

Cable () - , .

Client/Server (/) - , (, , . .)
() .

DNS (Domain Name System) - DNS
(TCP/IP) IP . DNS www.aggsoft.com
198.63.211.24.

Internet () - , TCP/IP .

IP, Internet Protocol () - Internet Protocol,
TCP/IP, IP IP ,
'xx.xx.xx.xx'.

IP (Internet Protocol) - , TCP/IP.
IP , , . IP
: 198.63.211.24.

LAN (Local Area Network) - .

NIC, Network Interface Card () - , ,
(PCI, turbochannel,
nuBus, .) (, 10baseFL).

PC () - Personal Computer () .

Ports () - .

Protocol () - .

TCP/IP, Transport Control Protocol / Internet Protocol - TCP IP , .

TCP/IP
Internet.

(Log file) - (. log) —

2

2.1

Copyright © 1999-2023 AGG Software.
All Rights Reserved

1. Advanced TCP/IP Data Logger -
2. Advanced TCP/IP Data Logger sales@aggsoft.ru
3. Advanced TCP/IP Data Logger
Advanced TCP/IP Data Logger
4. **Advanced TCP/IP Data Logger** "AS IS".
- 5.
6. Advanced TCP/IP Data Logger
7. -

Advanced TCP/IP Data Logger
Advanced TCP/IP Data Logger.

2.2

shareware-

5

• 21

2.3

2.4

Advanced TCP/IP Data Logger	support@aggsoft.ru
	support@aggsoft.ru
	sales@aggsoft.ru

3

3.1

- Windows 2000 SP 4 - Windows 10 (x86 x64,).

3.2

, Advanced TCP/IP Data Logger
Files\Advanced TCP/IP Data Logger"

Advanced TCP/IP Data Logger

Advanced TCP/IP Data Logger.

"\Programs

4

4.1

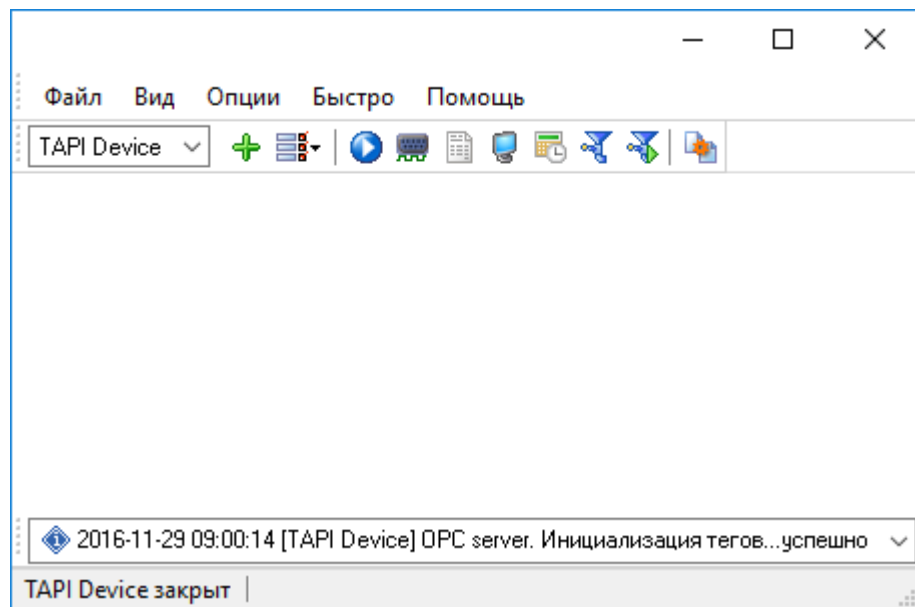
Advanced TCP/IP Data Logger

Advanced TCP/IP Data Logger

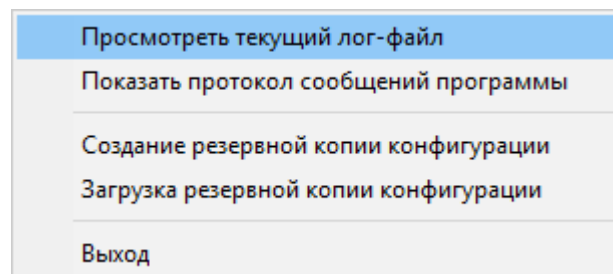
" "

(. 1),

2) (" - ..."), " " (



. 1.



. 2.

C:\. ,
_____ 8

1-2-3-4

1.

" "
_____ 12

2.

().
" "
()
).

3.

, _____ 30
" "
, , ,
, , ,
, .

4.

Advanced TCP/IP Data Logger ,
Advanced TCP/IP Data Logger , ,

4.2

(NIC).

- Advanced TCP/IP Data Logger IP (NIC),
Advanced TCP/IP Data Logger IP
- Advanced TCP/IP Data Logger DHCP, IP

• , IP 0.0.0.0.

" [TCP/IP](#) [12]".

- - ,

- [24]

- ,

[28] - .

([7]).

" [19] ",

Advanced TCP/IP Data Logger [38].

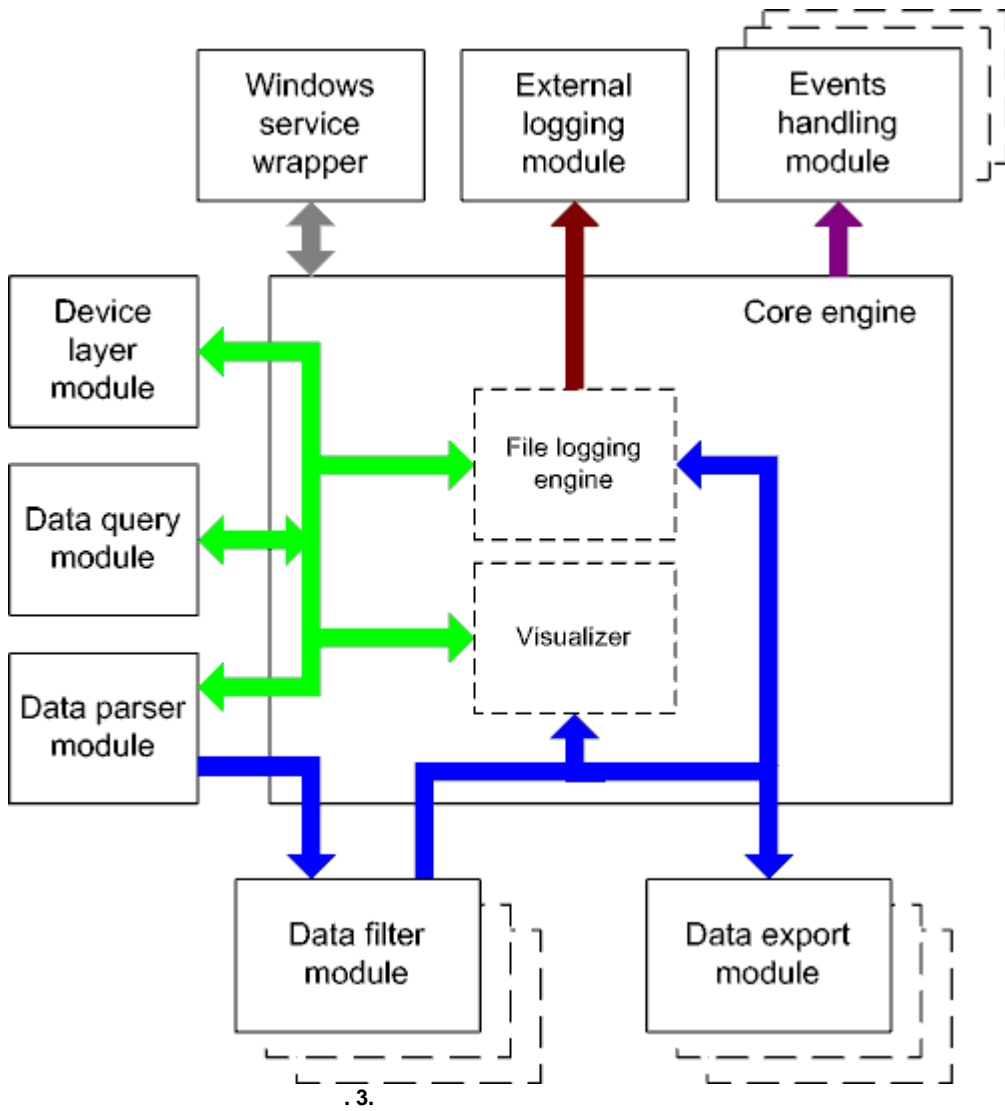
-

Advanced TCP/IP Data Logger. [30] (plug-ins),

" [30] ".

[41] ([7]),

4.3



- - ()
- - ()

- Core engine -
- Device layer module -
- Data query module -
- Data parser module -
- Data filter module -
- Data export module -
- Visualizer -
- File logging engine -
- Windows service wrapper -
- External logging module -
- Events handling module -

4.4

Windows. / COM-

4.5

1.

2.

1.

2.

regedit.exe

Windows x64

HKEY_LOCAL_MACHINE\SOFTWARE\Wow6432Node\AGG Software\Advanced TCP/IP Data
Logger

Windows x32

HKEY_LOCAL_MACHINE\SOFTWARE\AGG Software\Advanced TCP/IP Data Logger

3.

:
Ctrl+S -
Ctrl+D -
Ctrl+P -

Ctrl+L - log- ;
Ctrl+R - ;
Ctrl+E - Windows;
Ctrl+M - , .

4. ,
. .: -

5. INI .
" " .

6. 10 ,
: - .

5

5.1

5.1.1 TCP/IP

UDP TCP

(User Datagram Protocol). TCP TCP (Transport Control Protocol) UDP

, , IP. TCP ,
TCP , TCP
, UDP , TCP
UDP

UDP ,
TCP, UDP IP TCP, UDP

Messaging, UDP IP. Instant

Advanced TCP/IP Data Logger

TCP/IP

(TCP/IP) Advanced TCP/IP Data Logger

:

1. IP

TCP/IP, IP

Advanced TCP/IP Data Logger

(www.yourserver.com)

"Plant1" IP "Plant1",

Advanced TCP/IP Data Logger IP

2. IP ;

IP

Advanced TCP/IP Data Logger (NIC),

IP

Advanced TCP/IP Data Logger

IP Microsoft Windows, TCP/

IP

IP

"OK"

Advanced TCP/IP Data Logger TCP/IP.

IP Advanced

TCP/IP Data Logger

Advanced TCP/IP Data Logger

(. . . 7).

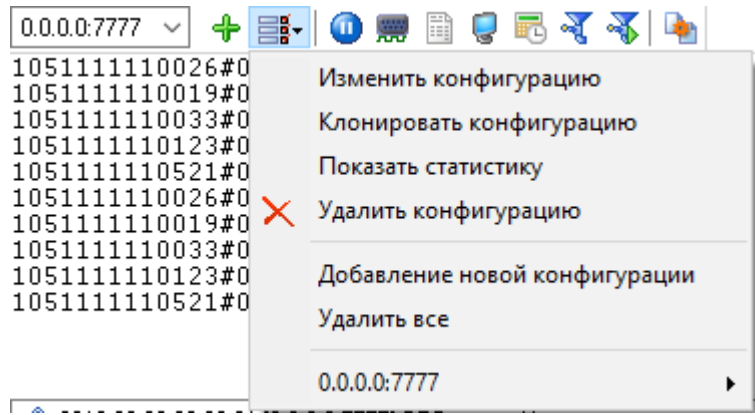
(. . . 7)

" " (. 4).

" IP"

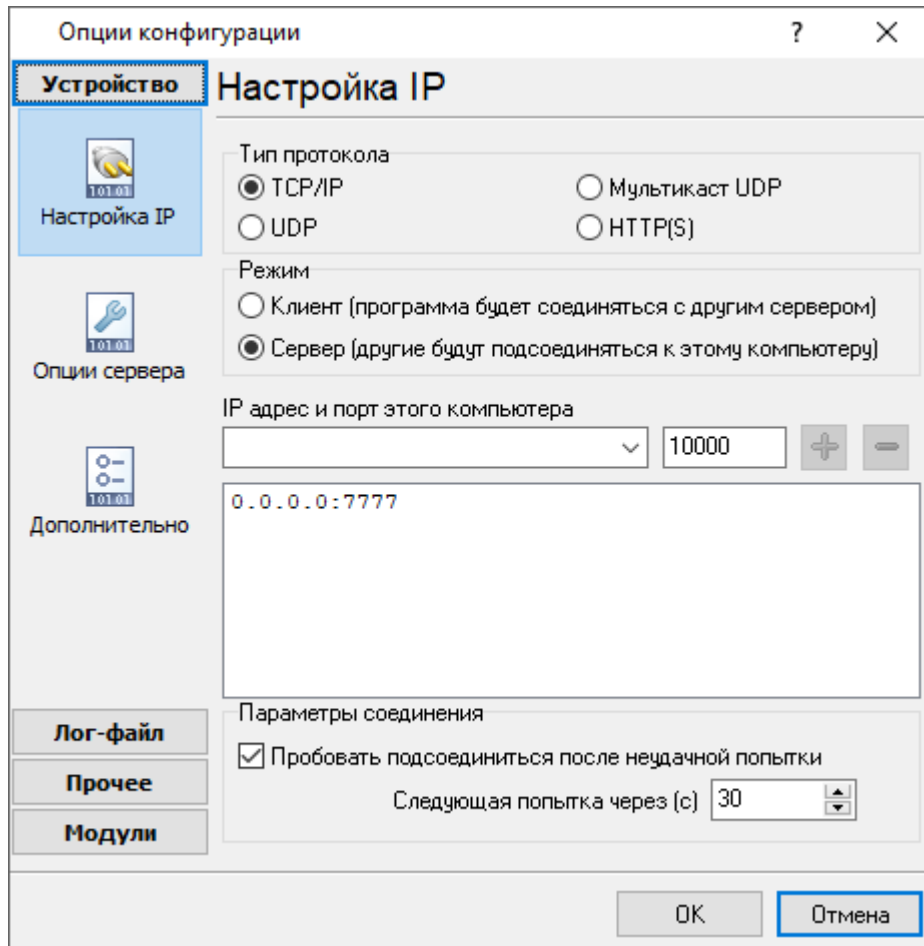
TCP/IP

" " (. 4).



. 4.

" TCP/IP: IP " IP



. 5. TCP/IP

IP , , .

SMTP - 25, the telnet - 23, NNTP -

119, . . .

SERVICES, Windows (Windows NT

WINNT\SYSTEM32\DRIVERS\ETC). SERVICES -

Advanced TCP/IP Data Logger

(,)

(,)

IP (socket).

IP

IP

" " IP

(,)

" , Advanced TCP/IP Data Logger

(c)". N , "

- IP

IP ,

Advanced TCP/IP Data Logger - IP

IP : 192.255.255.255

IP , 255

IP "+" "-" IP
 . IP
 "+" -
 "-" -
 :
 +192.168.1.255
 +127.255.255.255
 -1.1.1.1

(firewall)

Microsoft Windows XP SP2 , Advanced TCP/IP
 Data Logger . Windows Firewall,
 ,
 , Windows Firewall ,
 , (Security Alert).



. 6.

-
-
-

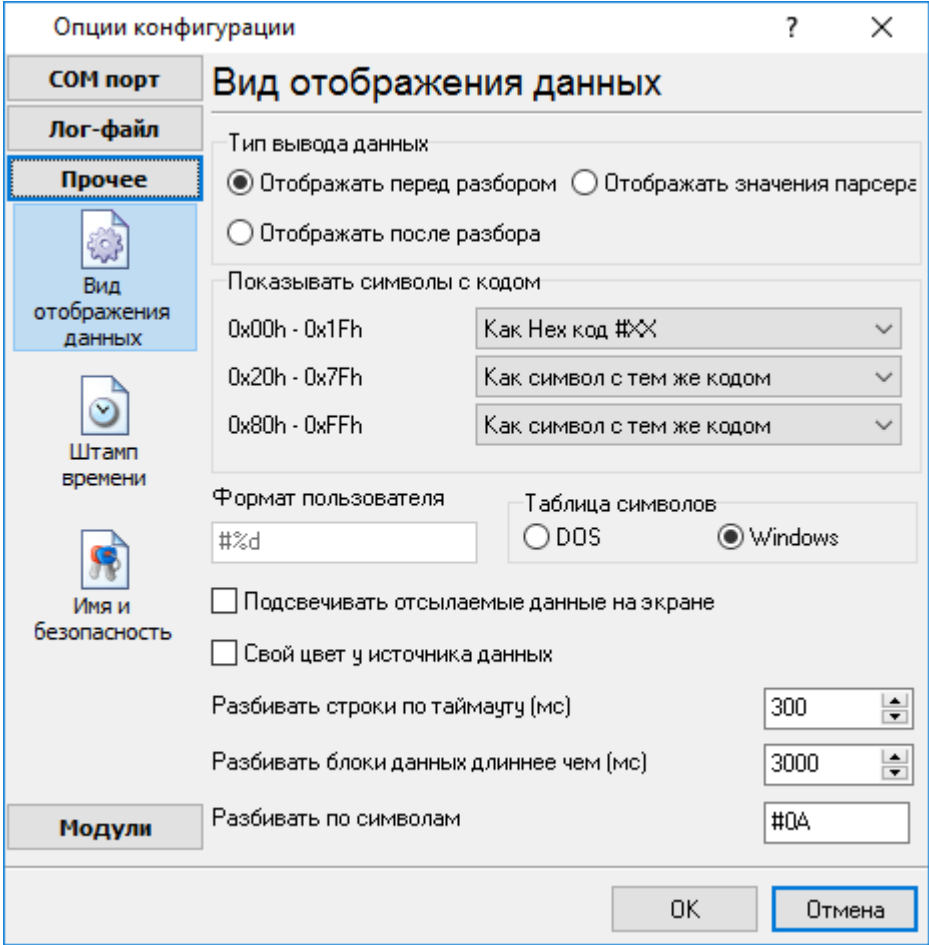
.
:
.
7). " " TCP/IP (.
-
1500 ,
"TCP/IP":
-
() -
"-1",

3. - 60/1 (60
1).
: keep-alive

5.2

5.2.1

(7) 2 (. 8):
1.
2.



. 8.

" (. 8)

Hex-

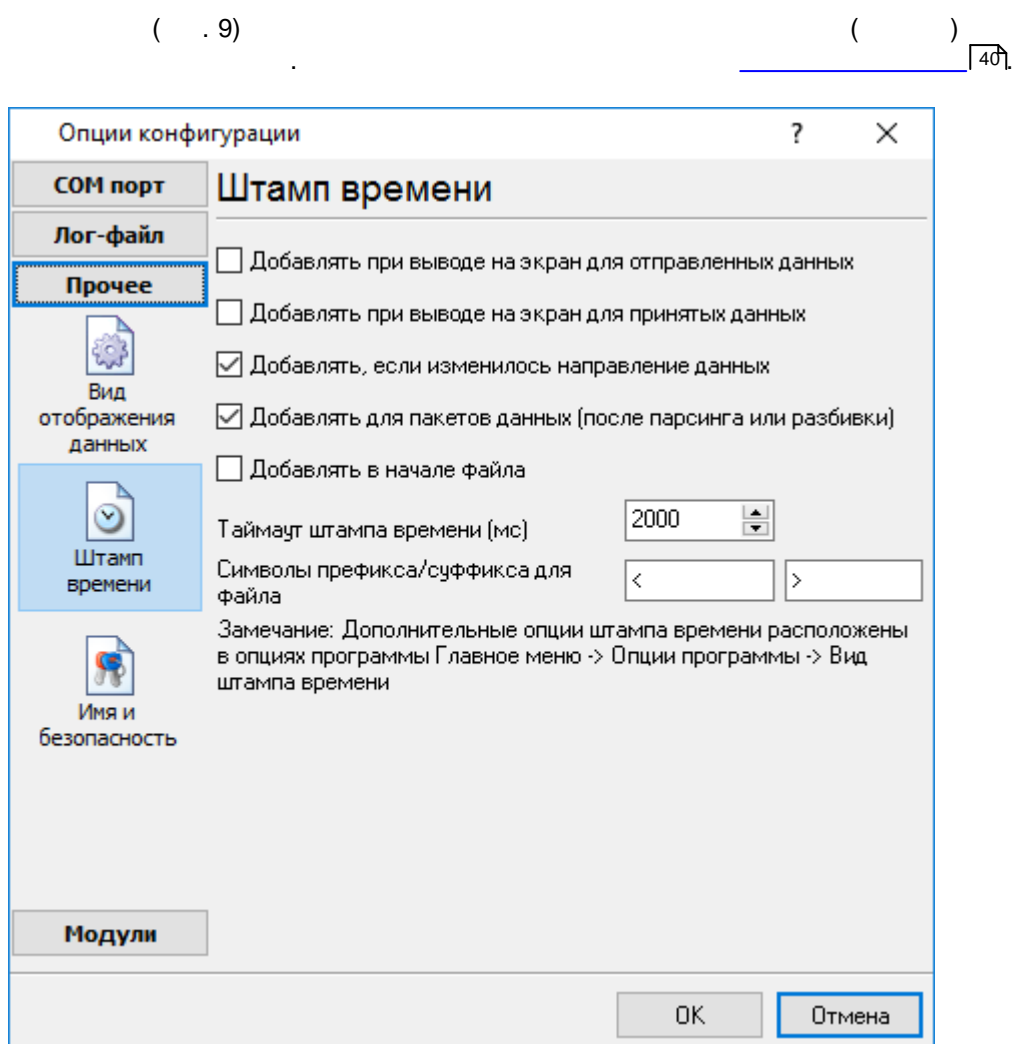
%d , %x -

: Windows DOS

(OEM).

The table content is extremely faint and mostly illegible. It appears to be a data log with multiple columns. Some visible characters include '0,' and '.8'.

5.2.2



_____ 40
: >#0D#0A

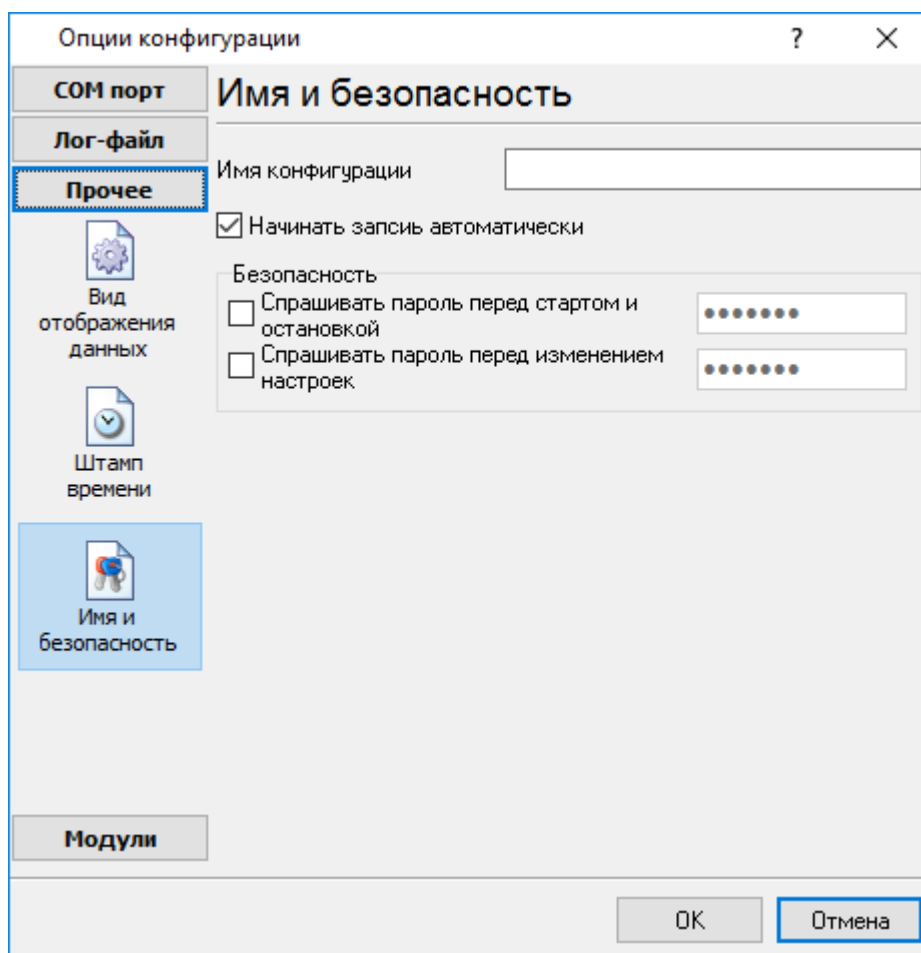
5.2.3

(. 10) :

" "

_____ 46

" / "

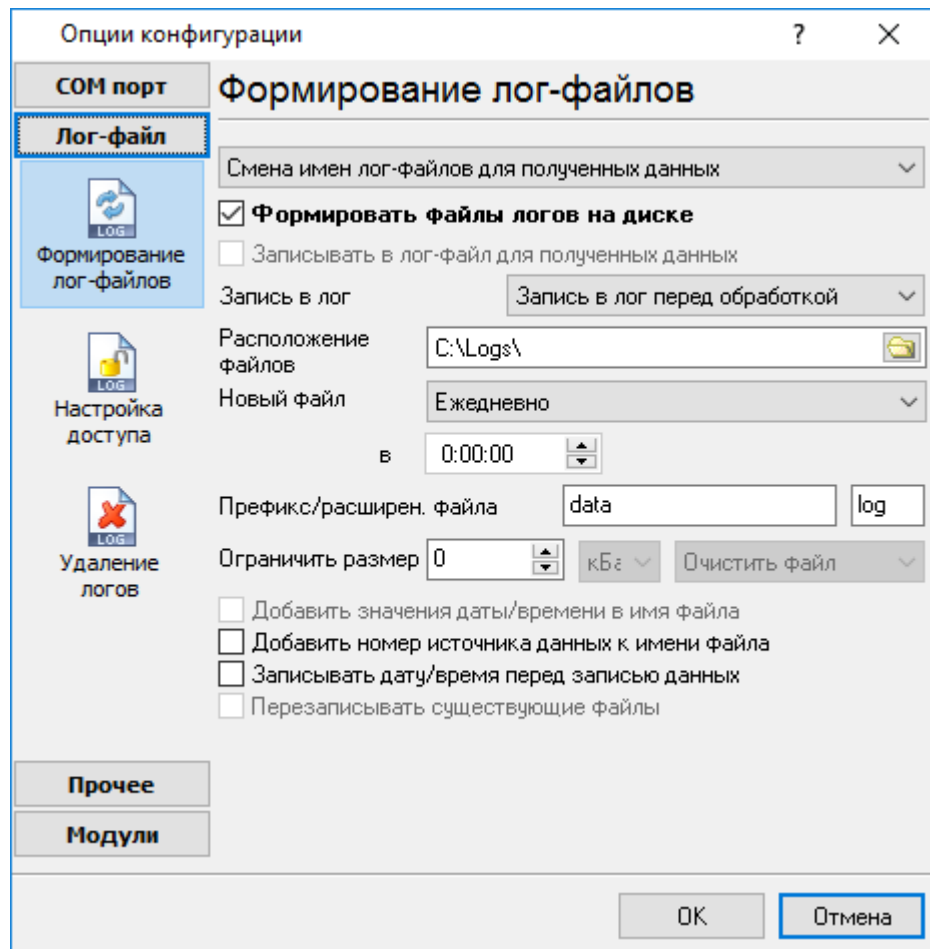


. 10.

5.3

5.3.1

(. 11).



. 11.

"OK".

Advanced TCP/IP Data Logger

"sample",

"log ",

```

"sampleYYYYMMDD.log". 21-
2003 - "sample20030321.log".
• ( ).
, , , .
" " :
1. - , .
DDMMYYYY, DD - , MM -
YYYY - ;
2. - . MMYYYY;
3. - YYYYMMDD;
4. - .
sample00000001.log. -
5. ;
6. - . WWYYYY, WW -
, YYYY -
7. ;
8. - . HHDDMMYYYY;
9. - -
, .
"Schedule & Hotkeys",
:
D - , (1 - 31);
DD - , (01 - 31);
DDD - ( - ) ,
;
DDDD - ( - )
, ;
M - , (1 - 12);
MM - , (01 - 12);
MMM - ( - ) ,
;

```

```

MMMM - ( - ) ,
;
YY - (00 - 99);
YYYY - (0000 - 9999);
H - , (0 - 23);
HH - , (00 - 23);
N - , (0 - 59);
NN - , (00 - 59);
S - , (0 - 59);
SS - , (00-59).
W - ISO ( - ).
WW - ( ).
CLIENTID - ( ).
CLIENTNAME - ( ).

: "sample_log", "txt".

: = sample_log_, = txt ( !).
HHDDMMYYYY.

4 7 /

, COM1-

sample20030321.log.

/

4 7.

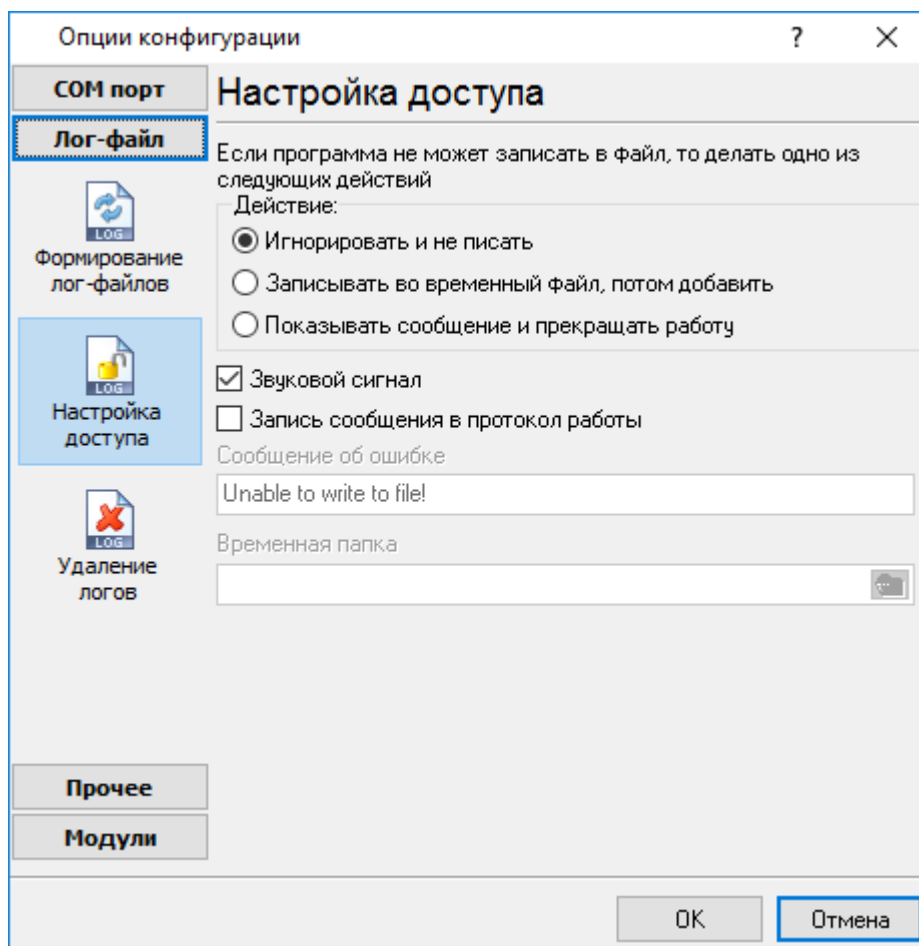
" " , :
1. - !
2. -
3. ( ) -
4. ( ).

```

5.3.2

Office (Microsoft Word),
TCP/IP Data Logger

Microsoft
Advanced



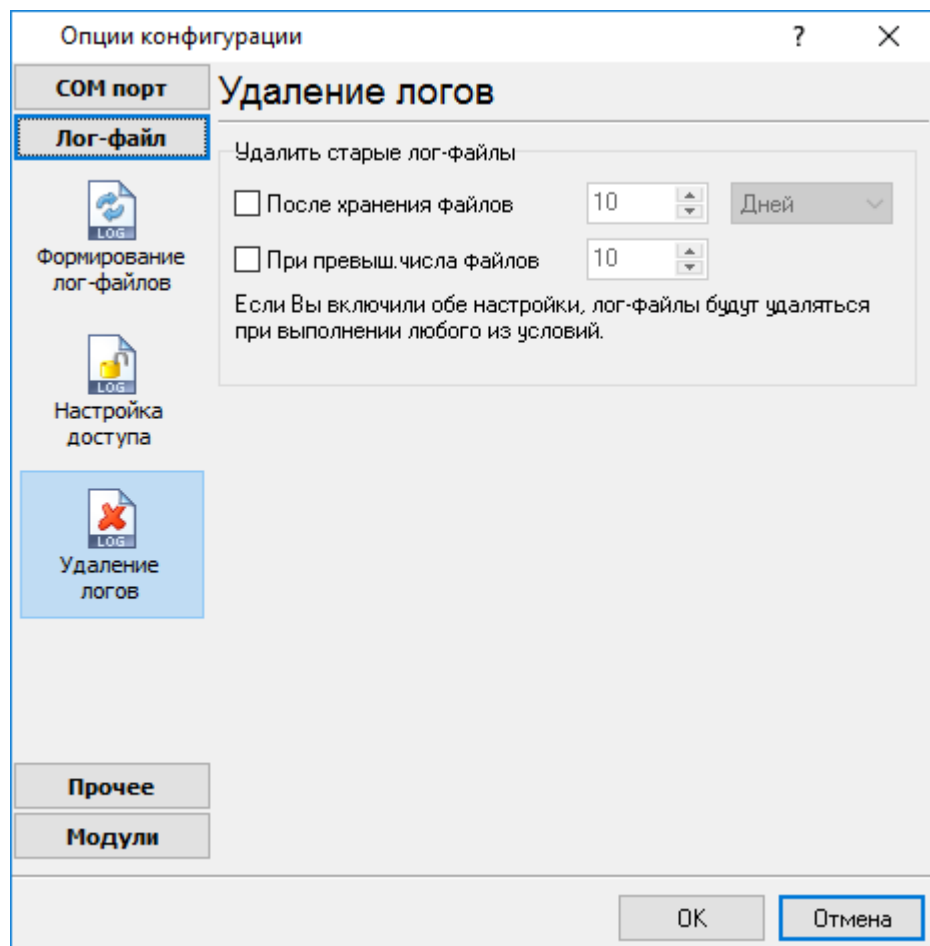
. 12.

Advanced TCP/IP Data Logger
(. 12),

-
-
-

5.3.3

(. 13).



. 13.

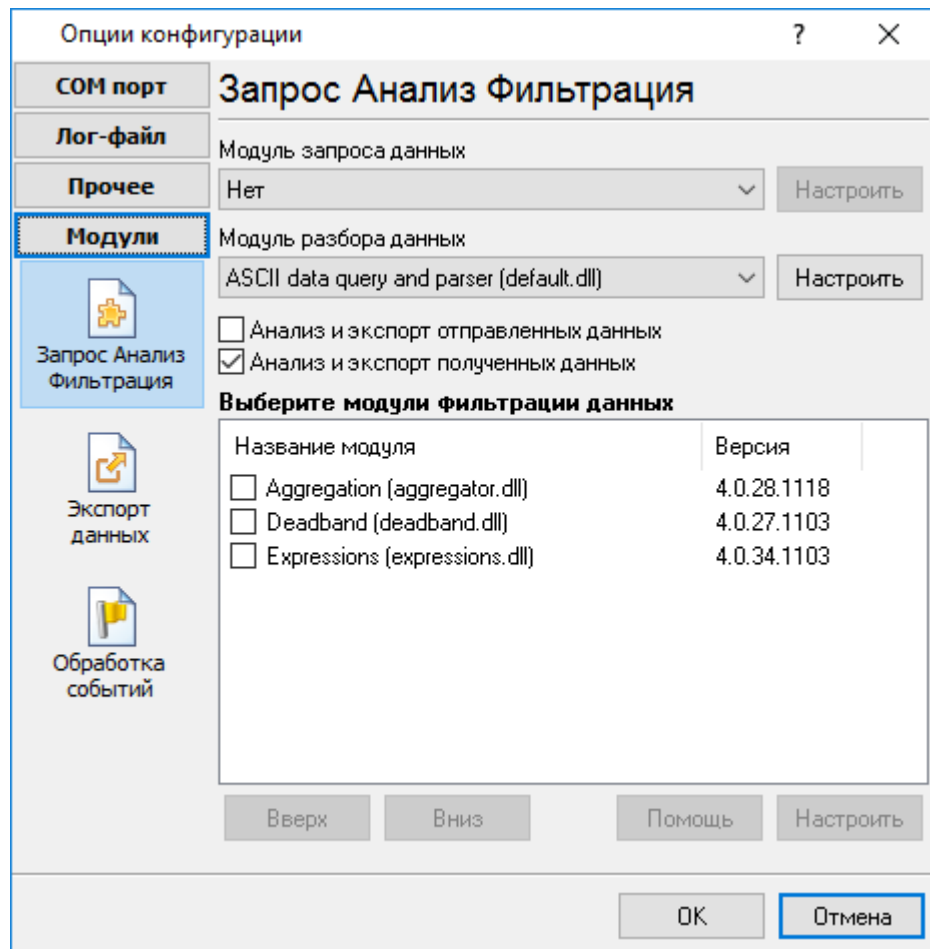
5.4

5.4.1

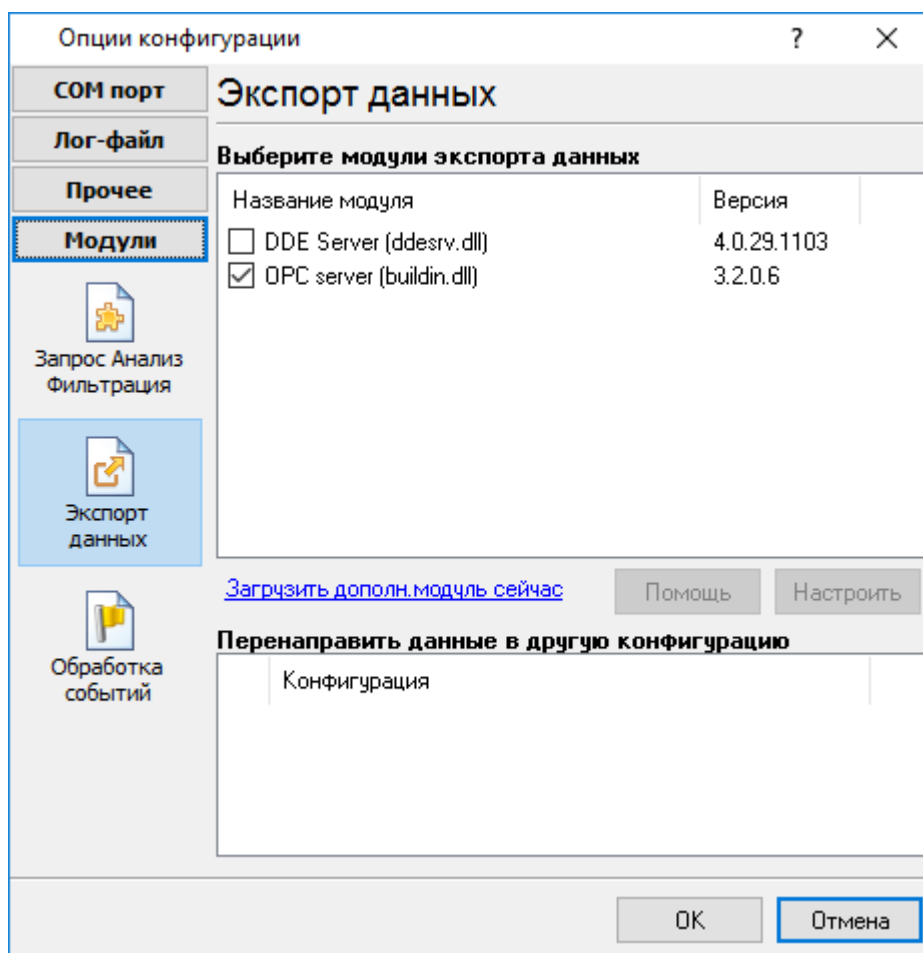
, (,) , " " (. .).

Advanced TCP/IP Data Logger :

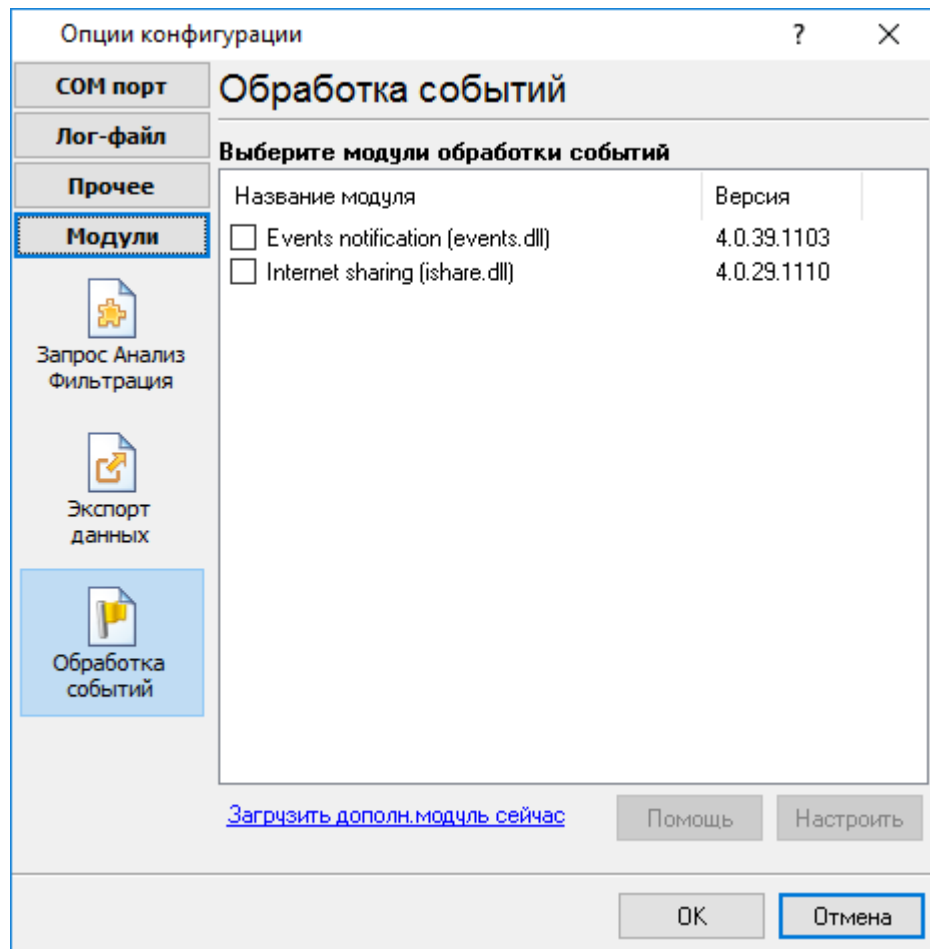
- - ; (, ,) - () , ;
- - ;
- - ;
- - , Excel ;
- (. 5.1.3) - Advanced TCP/IP Data Logger. , " - " " , "



. 14.



. 15.

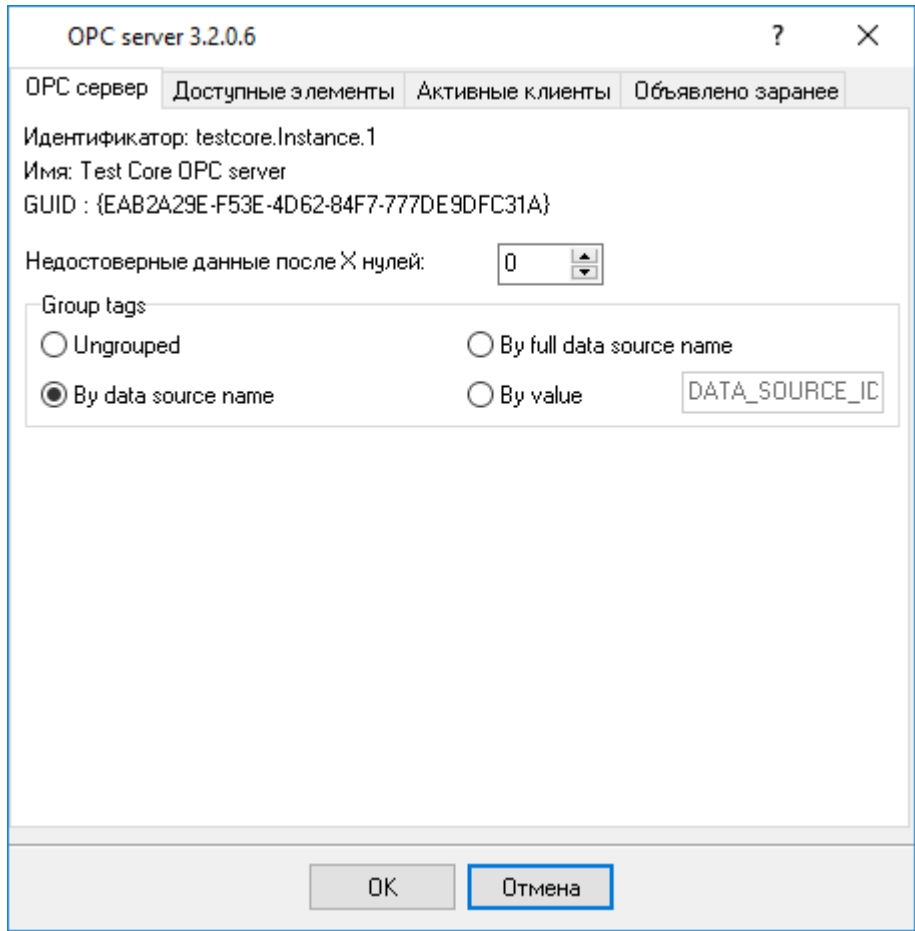


. 16.

"OK".

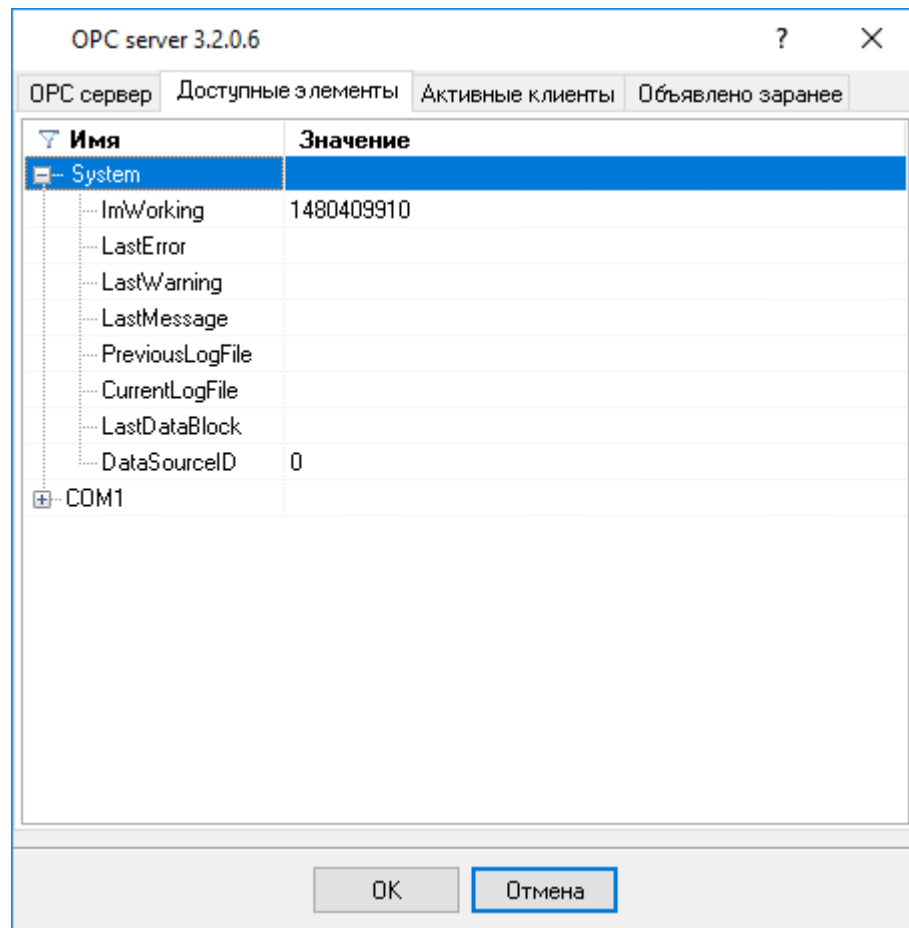
5.4.2 OPC

Advanced TCP/IP Data Logger OPC, OPC.
Data Logger OPC Advanced TCP/IP
(. 17).
OPC OPC Core Components Redistributable
www.opcfoundation.org (
OPC OPC



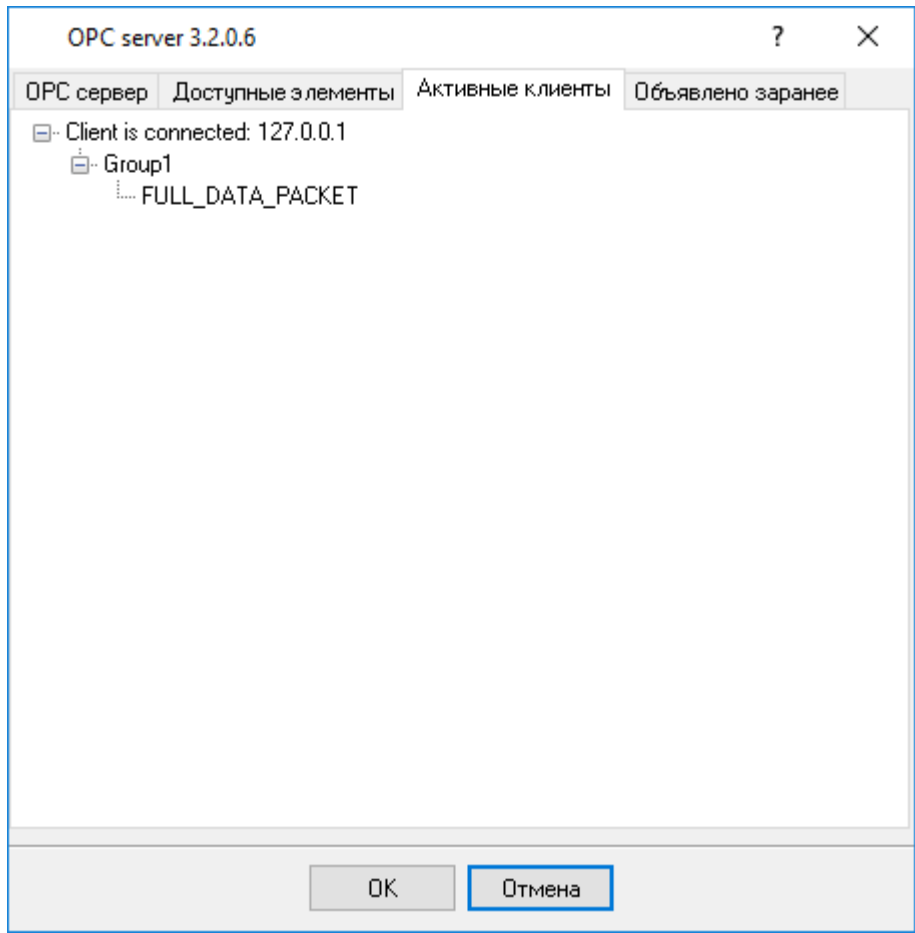
. 17. OPC

Advanced TCP/IP Data Logger, OPC, OPC
(. 18). OPC



. 18.

OPC



. 19.

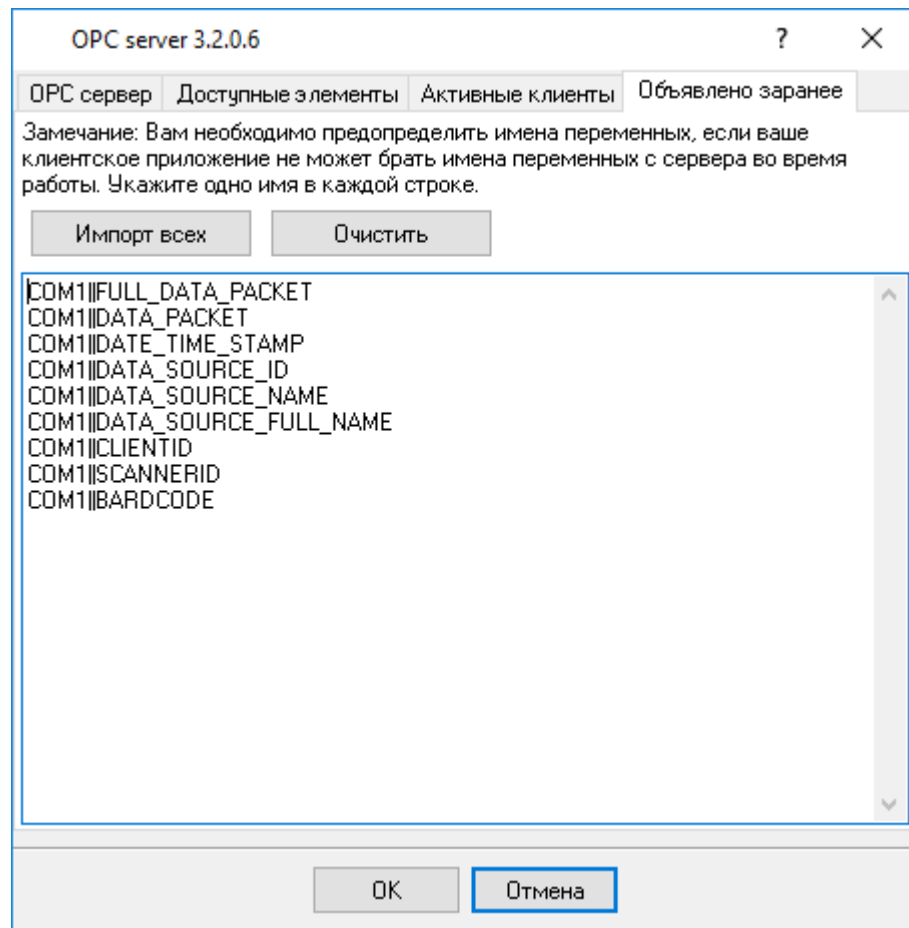
Advanced TCP/IP Data Logger

" ". Advanced TCP/IP Data Logger

OPC

(. 20).

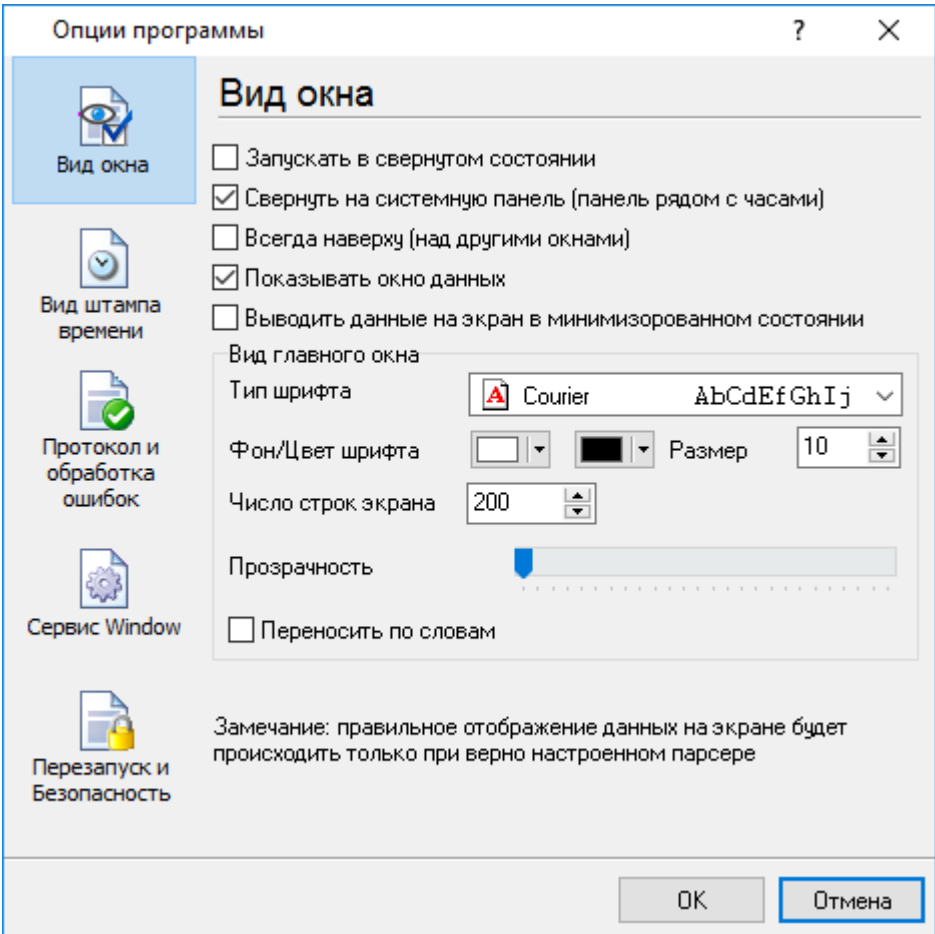
OPC
OPC



. 20.

5.5

5.5.1

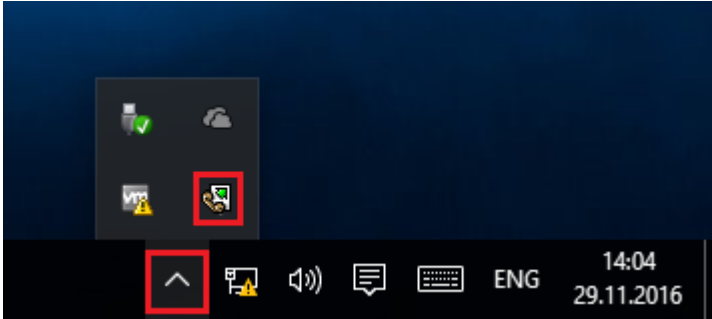


. 21.

" (. 21) :

- Advanced TCP/IP Data Logger

(. 22) ;



. 22.

(. 22) -

Advanced TCP/IP Data Logger

;

;

/

;

);

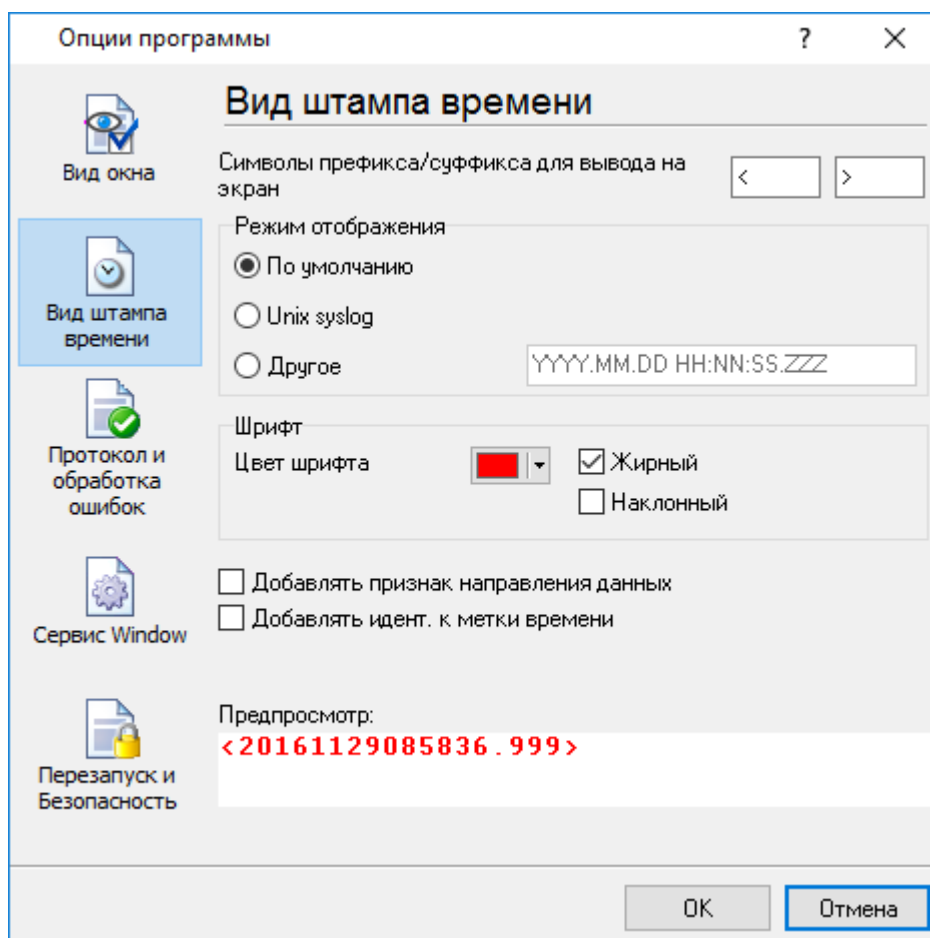
(, ,

- Windows 2000

;

5.5.2

(. 23)



. 23.

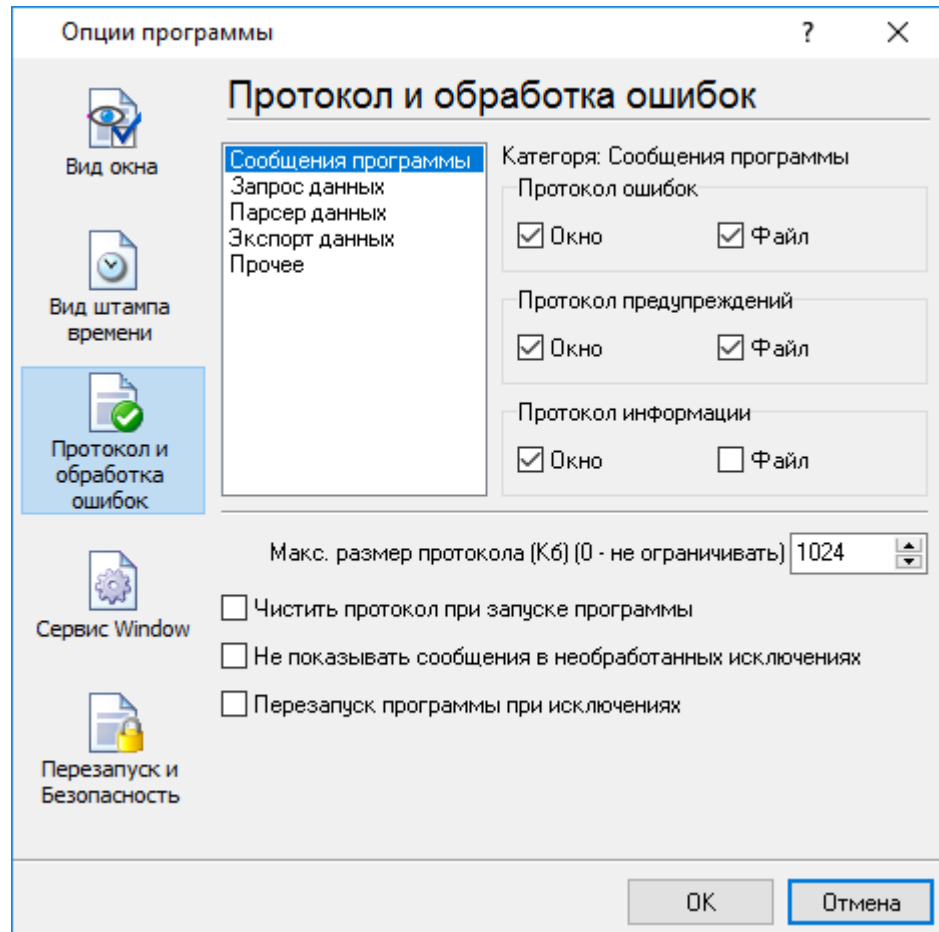
22

TX

RX

, COM1.

5.5.3



. 24.

Advanced TCP/IP Data Logger

3-

-
-
-

- ; - ,
- - , ;
- - , ;
- - , ;

/

Advanced TCP/IP Data Logger

5.5.4
5.5.4.1

Windows 2000

() Windows :

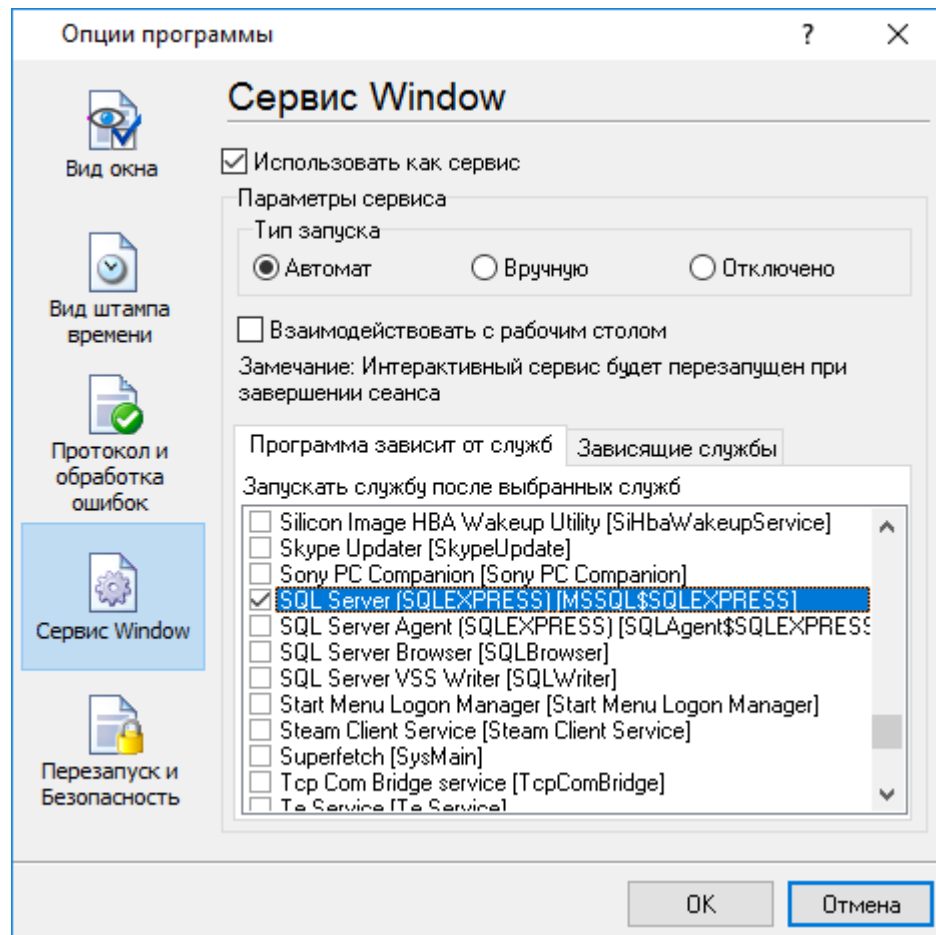
- 2000); (, Windows
- - ();
- ; ,
- ;

).

(*Windows Vista* , , , ,

(*elevated*) .

" " " **Windows**" (. 25).



. 25.

1. - ; Windows
 2. - ; " " ;
 3. - ;
- " . ' ,
- " (. 26).
- " , . . Windows

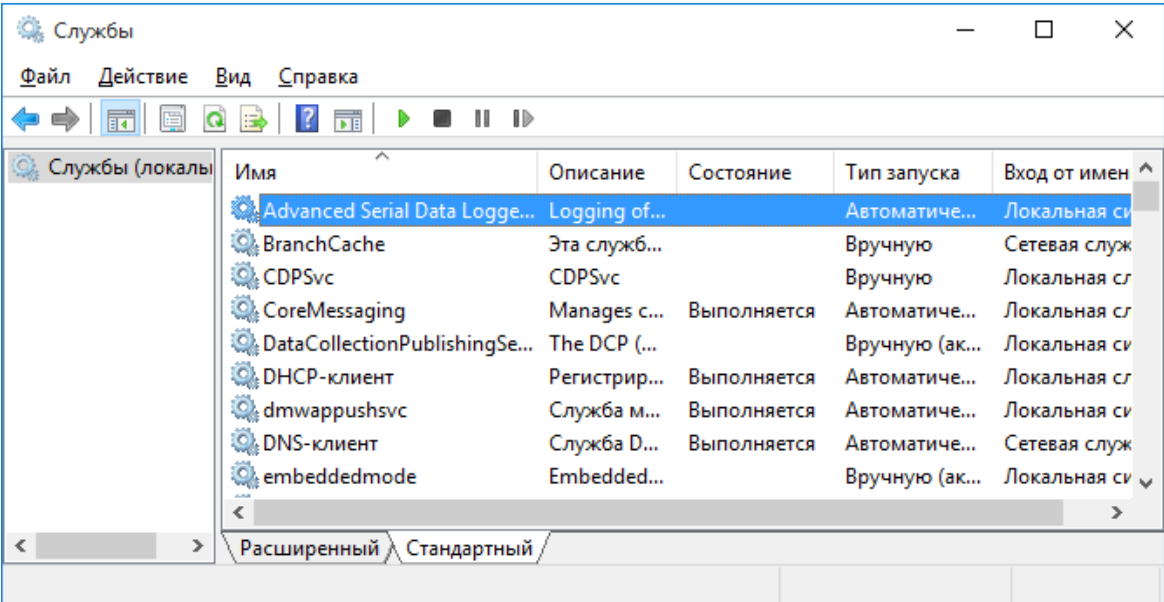
: 45 Windows Vista



. 26.

Advanced TCP/IP Data Logger, " ' " (. 25)

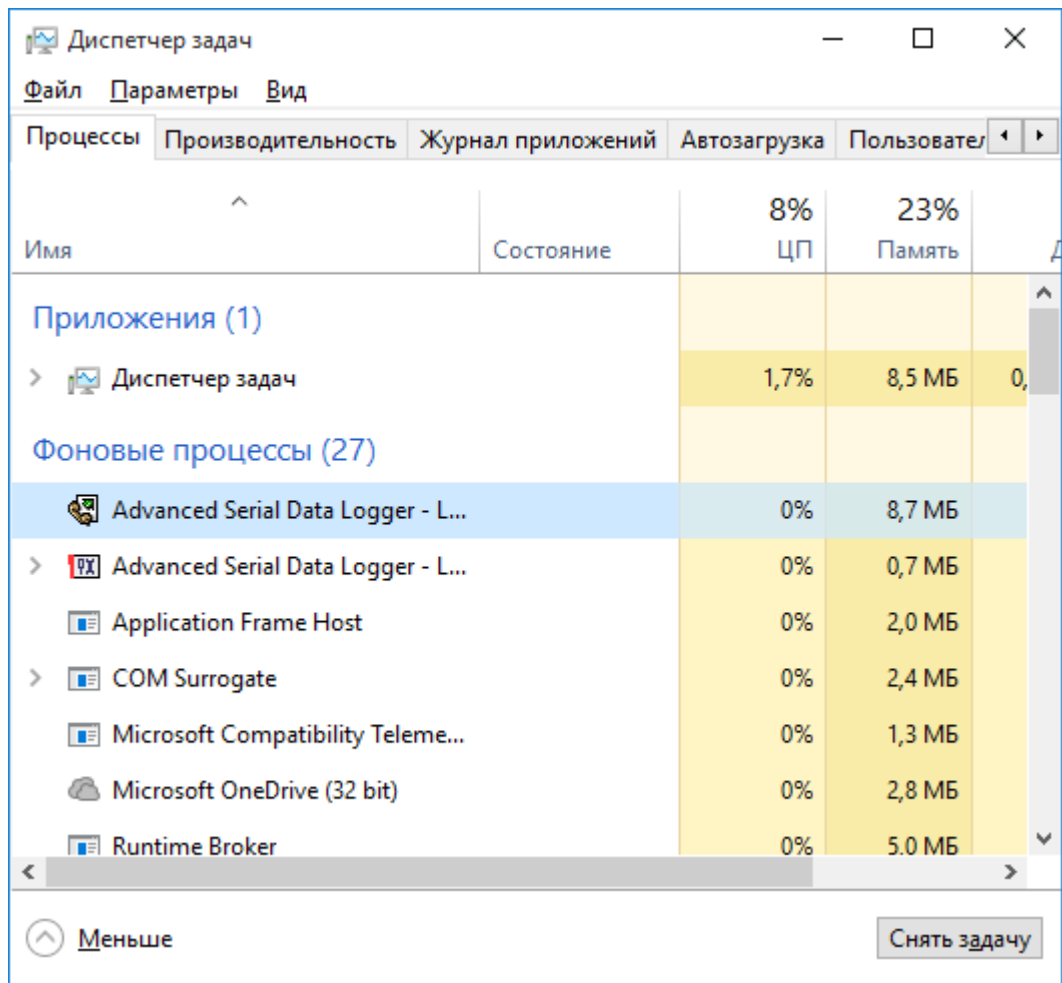
' " " ' (. 27).



. 27. (Windows 2000)

(. 28). Advanced TCP/IP Data Logger 2 - aipdlogsrv.exe aipdlog.exe

Advanced TCP/IP Data Logger, srvany.exe



. 28.

aipdlogsrv.exe :

- /? - ;
- /I - ;
- /A - ;
- /D - ;
- /R -

5.5.4.2

Windows Vista

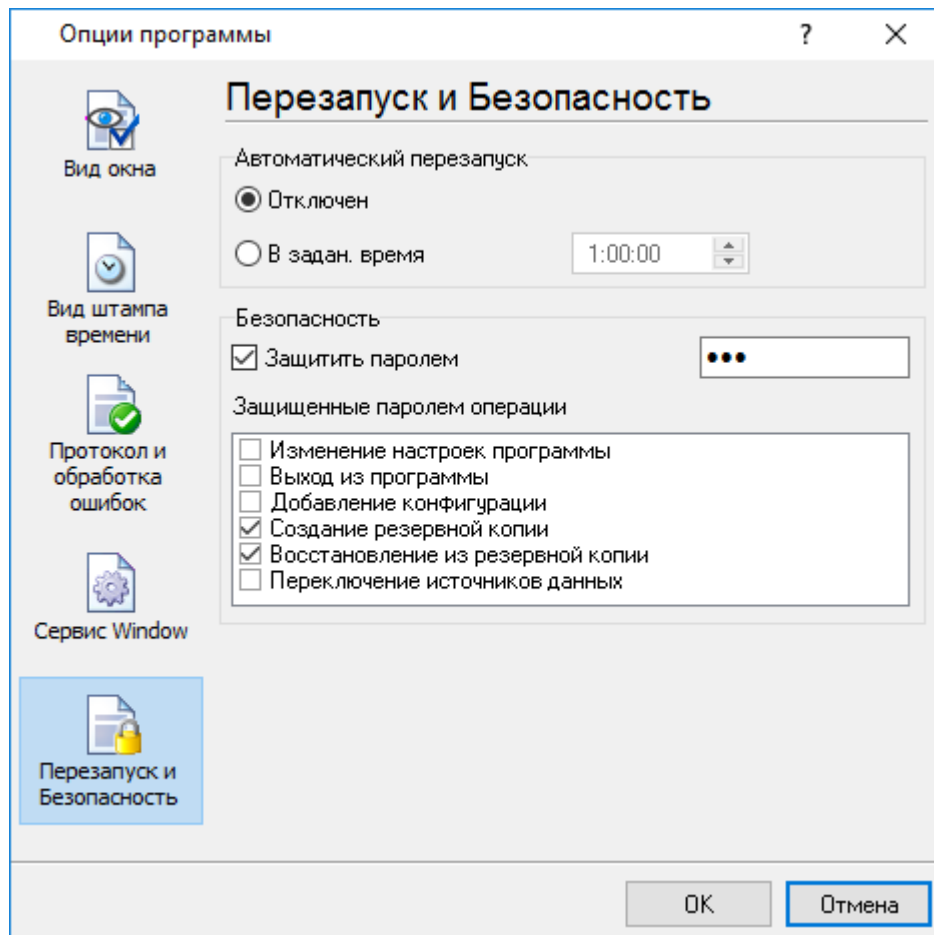
Windows Vista

Windows.

- : Interactive Services Detection
- : UIODetect
- : UIODetect.exe
- :
- : %windir%\system32\UIODetect.exe
- :
- * Home Basic:
- * Home Premium:
- * Business:
- * Enterprise:
- * Ultimate:

5.5.5

(. 29).



. 29.

6

?

6.1

SoftIce

support@aggsoft.ru