



"Advanced Excel Export"

| | | |
|--------|-----------------------|----|
| 1 | | 1 |
| 2 | | 1 |
| 3 | Advanced Excel | |
| Export | | 2 |
| 4 | | 3 |
| 5 | | 3 |
| 1 | | 3 |
| 2 | | 4 |
| 3 | | 6 |
| 4 | | 7 |
| 5 | | 9 |
| | | 9 |
| | | 10 |
| | | 11 |
| | | 12 |
| | | 14 |
| 6 | | 19 |
| 6 | ? | 20 |
| 1 | | 20 |

1

Excel 97, 2000, XP, 2003. XLS Microsoft Excel MS
Excel, Excel,

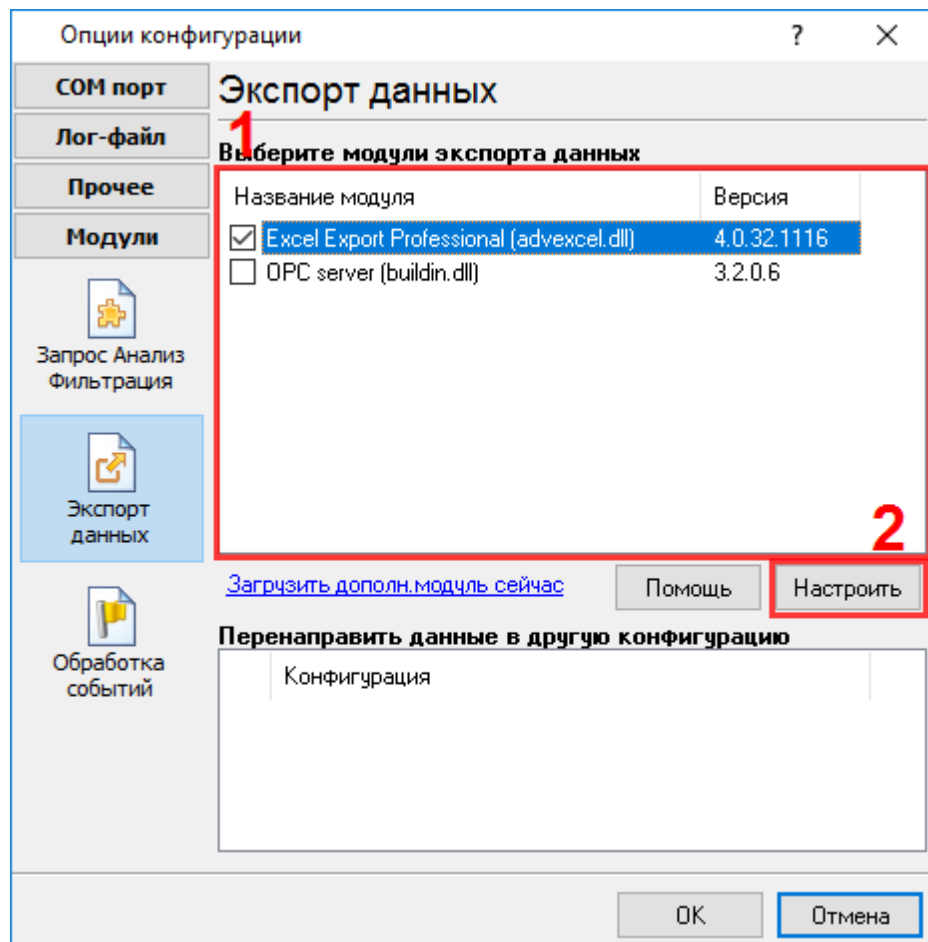
2

Advanced Excel Export :
: Windows 2000 SP4 , 32-x 64-x
- : 5 MB
:
(), Advanced Serial Data Logger.
Microsoft Vista :
Program Files,
:
1. ;
2. ;
3. Windows Vista .
- Google.

3

Advanced Excel Export

1. (, Advanced Serial Data Logger),
 2. ;
 3. ;
 4. Windows;
 5. " " ;
- .1-2.
- " " " - " " "



.1.

4

Plug-in -

Advanced Serial Data Logger

5

5.1

- 1.
- 2.
- 3.
- 4.
5. Excel

1.

2.

3.

4.

5.

6.

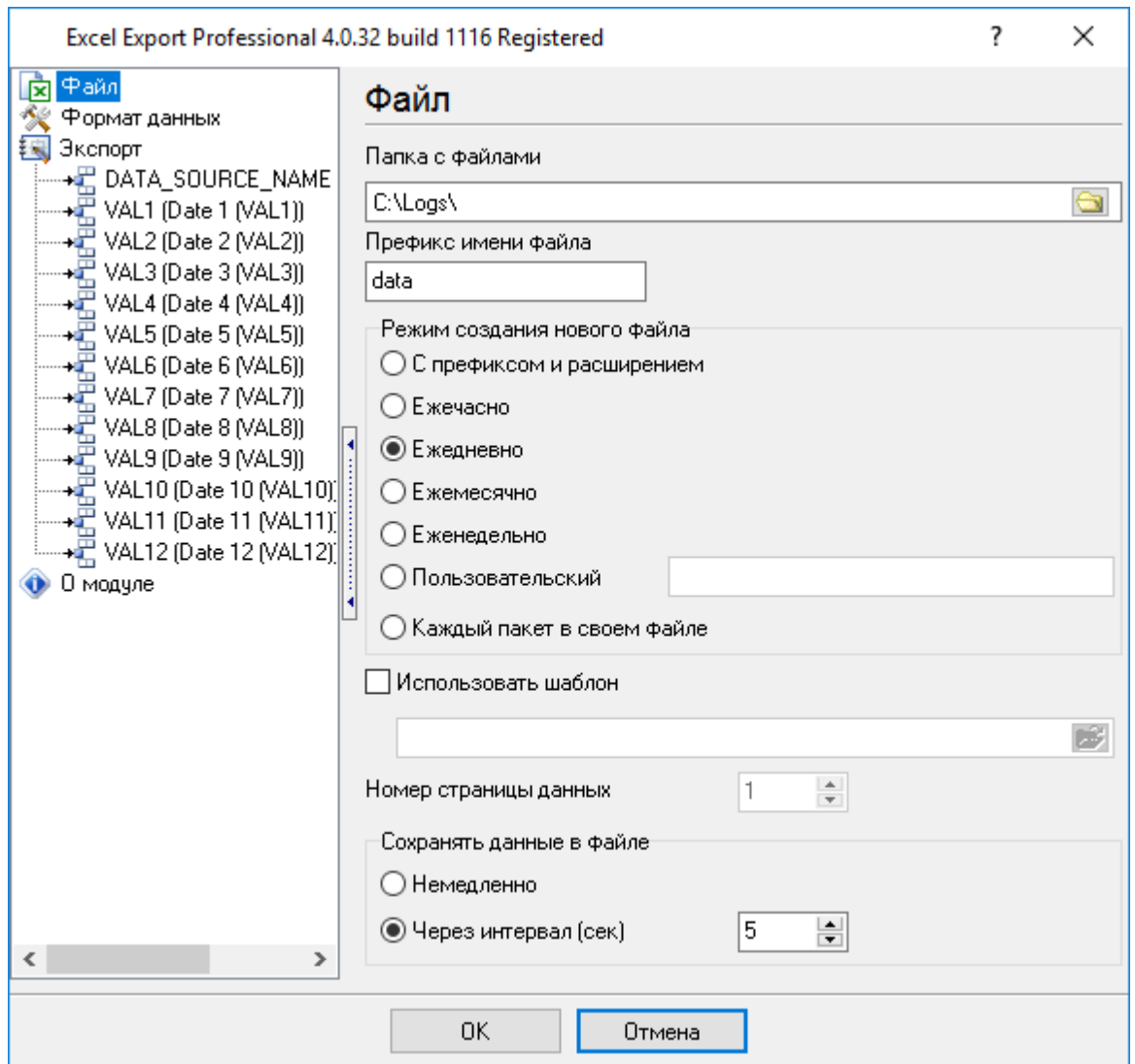
7.

8.

5

1

5.2



.1.

(MS Excel)

- "C:\";

- Prefix;

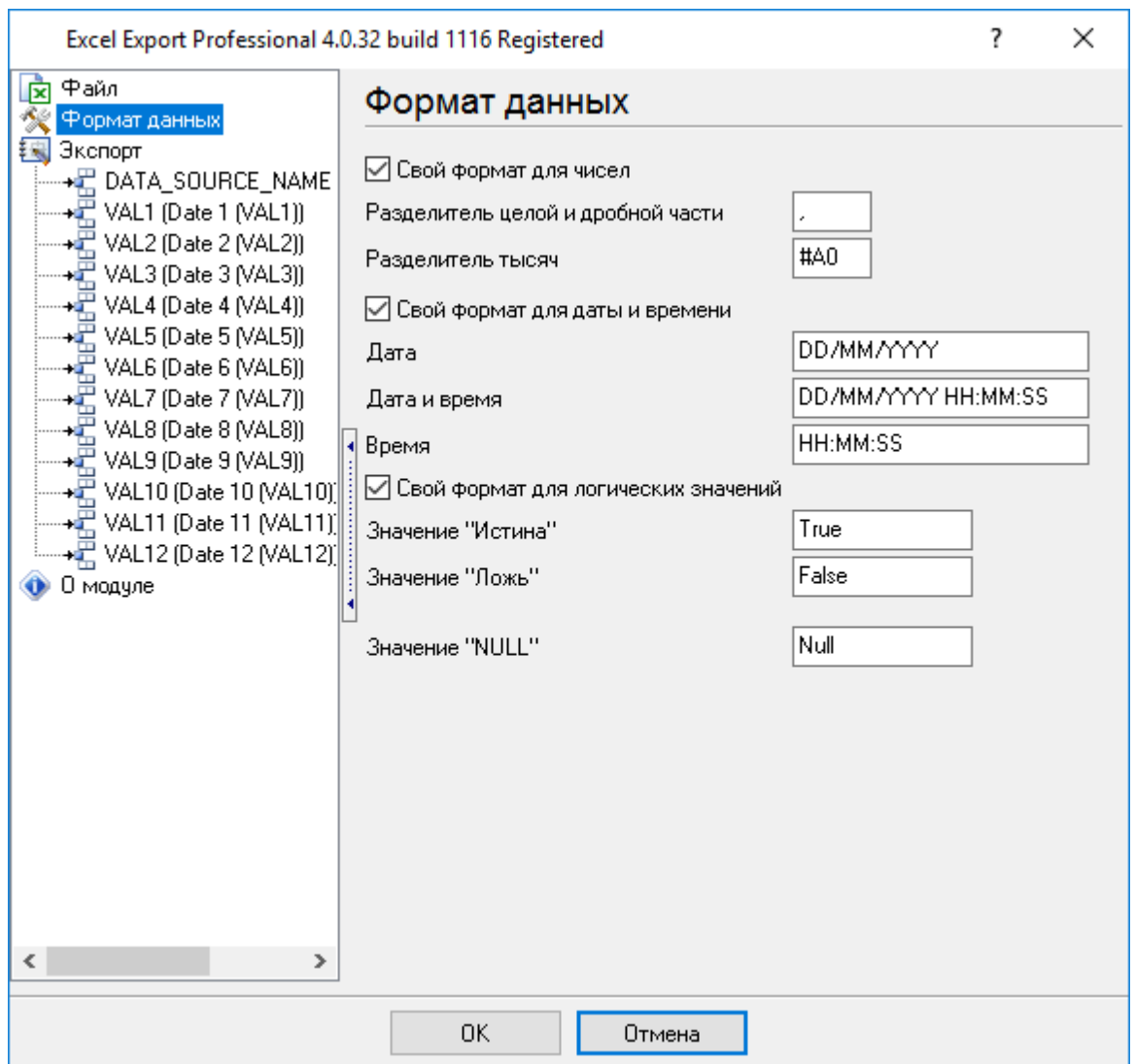
7

1.

(MS Excel - XLS).

- 2. -
YYYYMMDDHH.xls, YYYYMMDDHH - ;
- 3. -
YYYYMMDD; 2,
- 4. -
YYYYMM; 2,
- 5. -
YYYYWW. WW ; 2,
- 6. -
; .
- 7. ;
-
YYYYMMDDHHNNS . ,
-1. , PrefixYYYYMMDDHHNNS-1.xls.
1 . .
- / - MS Excel.
). - , (.
-1. , Excel

5.3



. 2.

MS Excel.

:

-

3

- ", ";

-

#"

3

- DD/MM/YYYY;

- DD/MM/YYYY HH:MM:SS;

- HH:MM:SS;

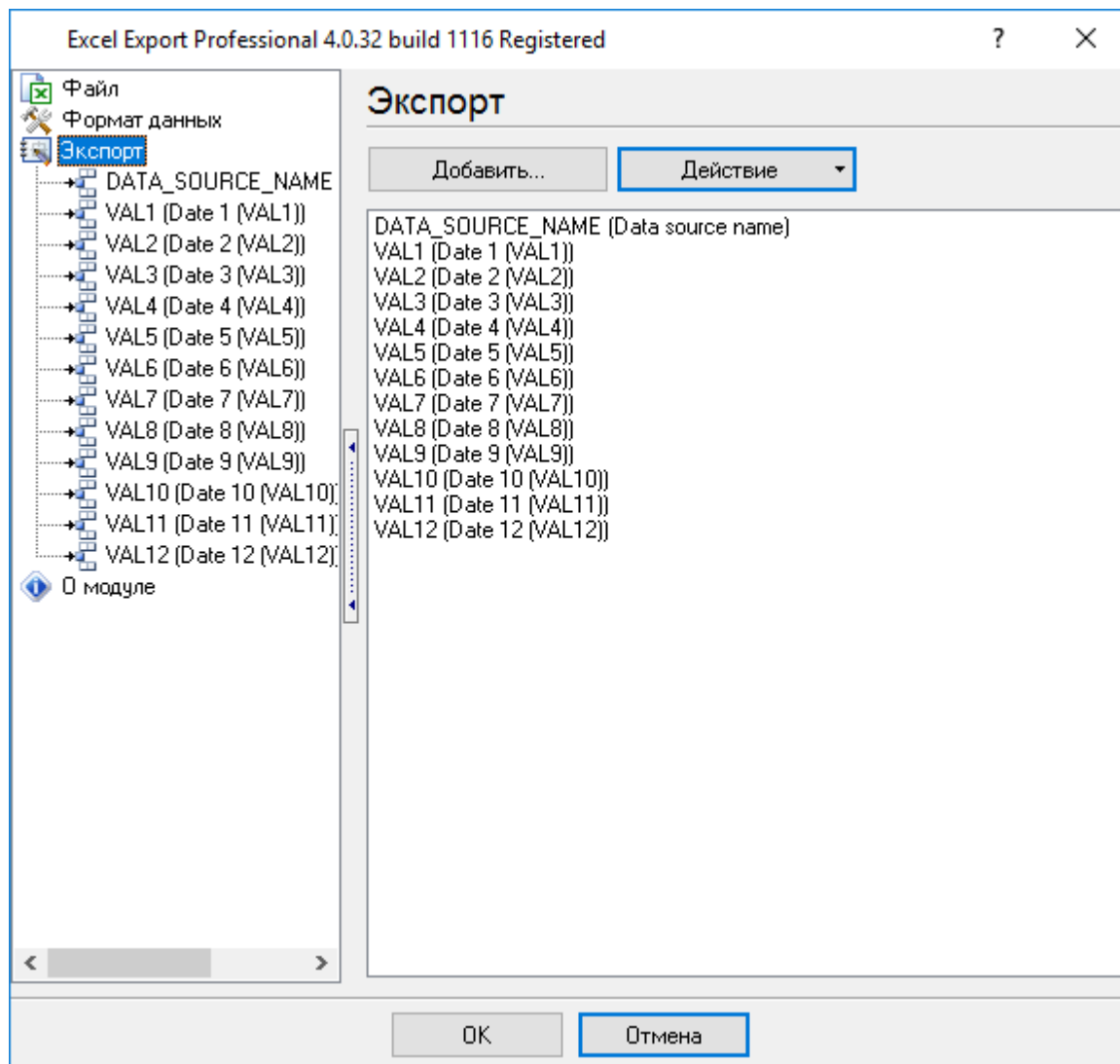
- True;

False;

"Null" -
- Null.

"Null".

5.4



. 3.

- "_____").

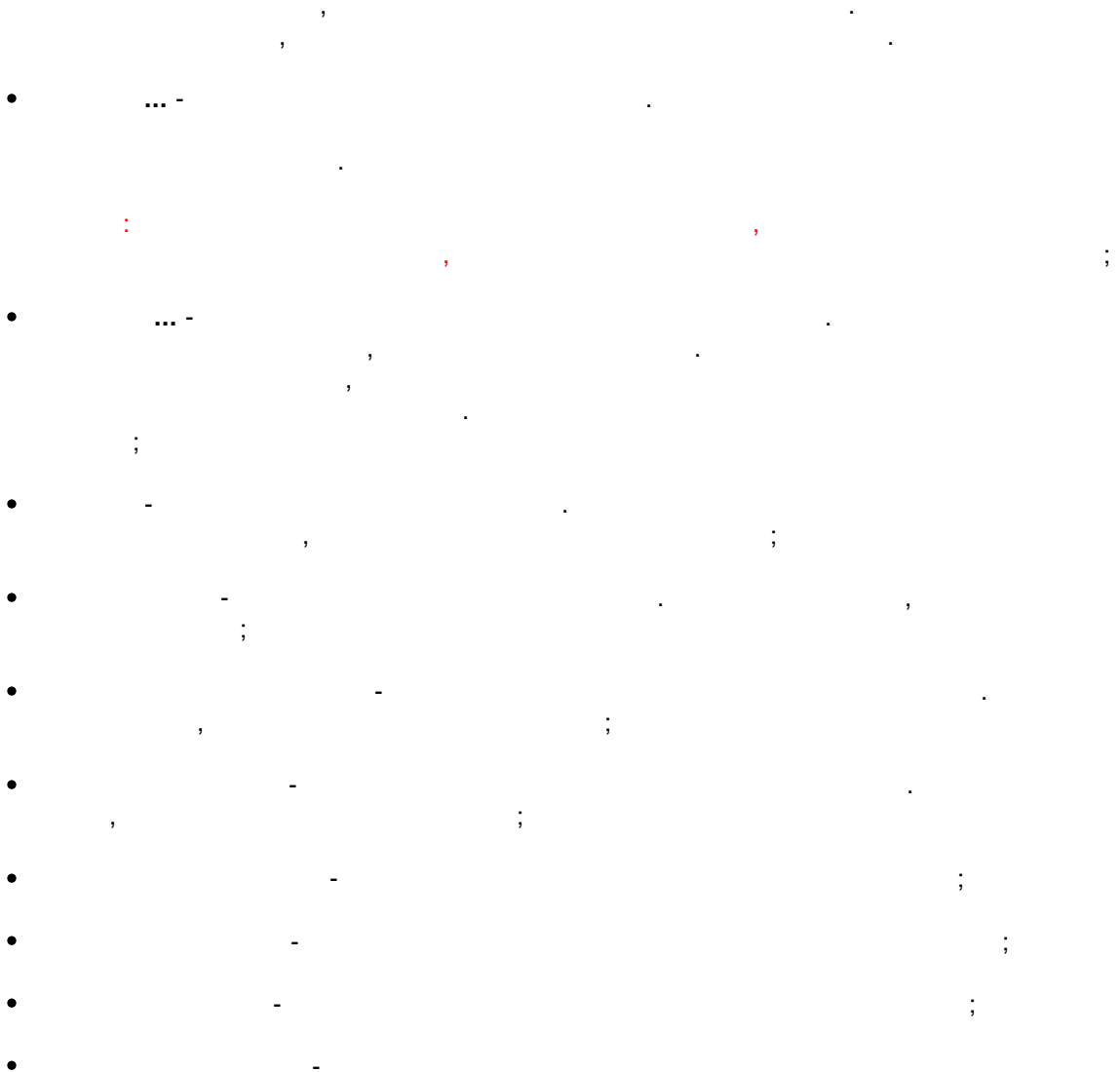
(, . 4.

Выбрать...
Добавить...
Удалить

Выделить все
Снять выделение со всех
Инvertировать все

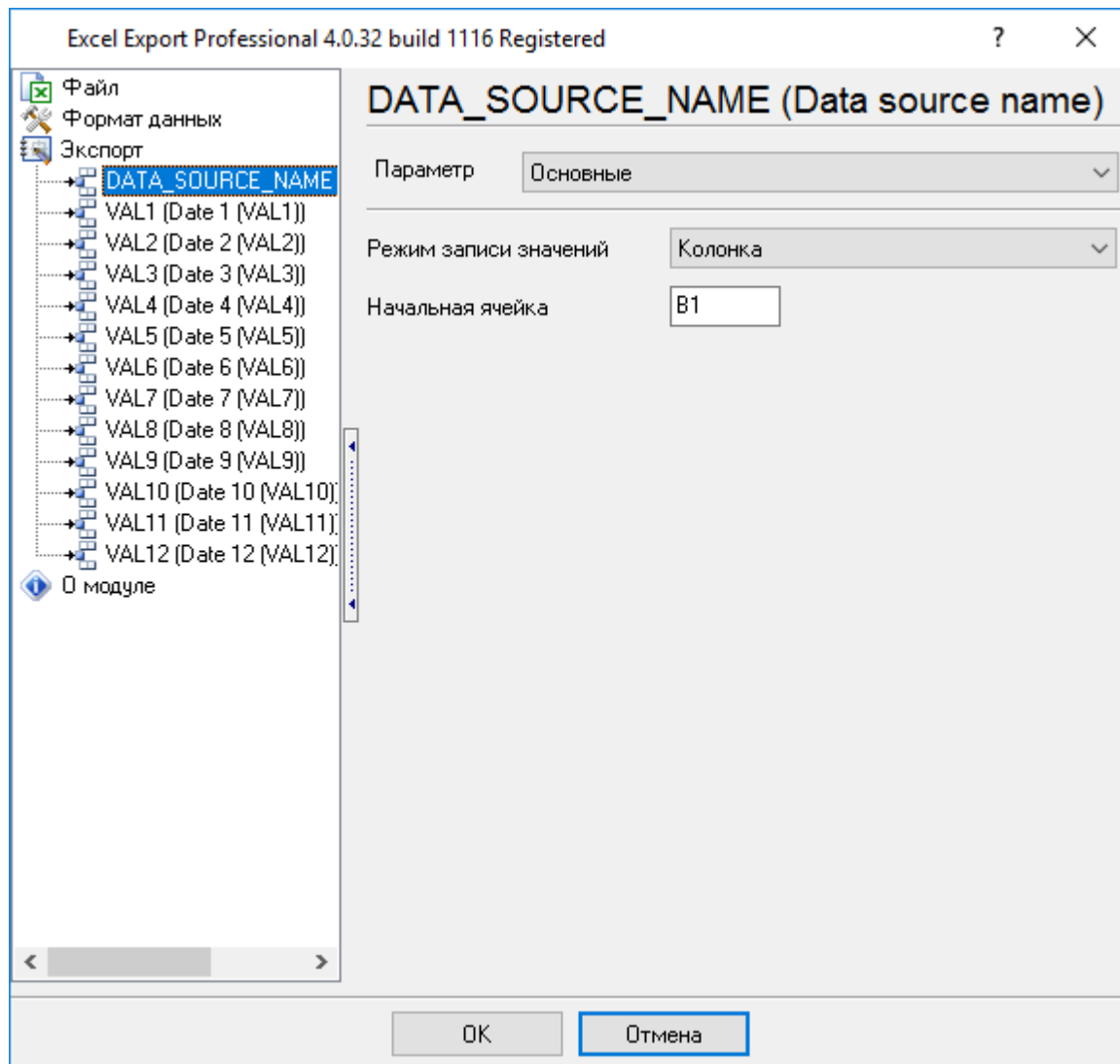
Переместить в начало
Переместить вверх
Переместить вниз
Переместить в конец

.4.



5.5

5.5.1



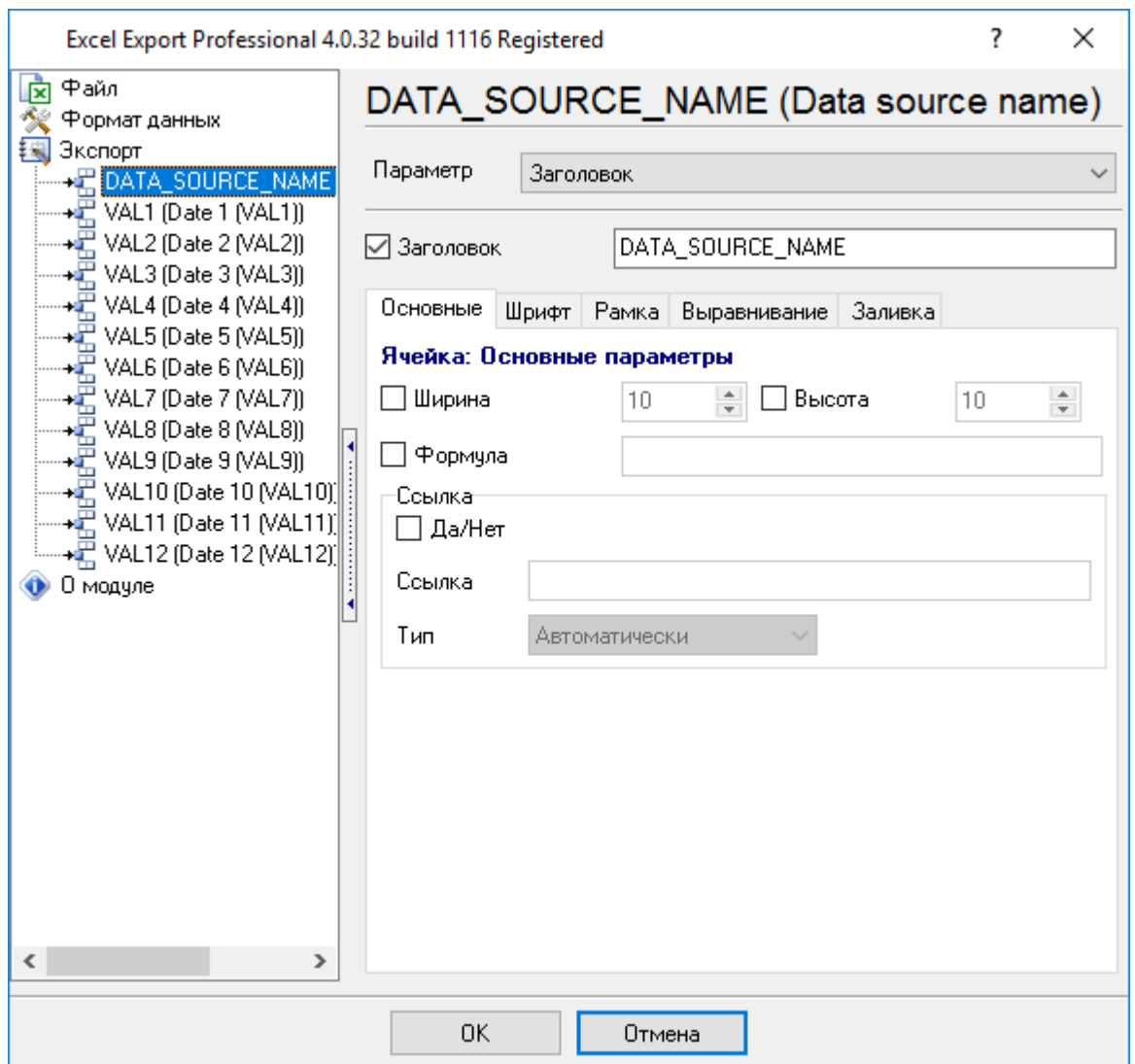
.5.

:

- " " 2 :

1. - ;
 2. - .
- (MS Excel - , A1, B5, D7),
- A1, A5, A6 " "
- A2.

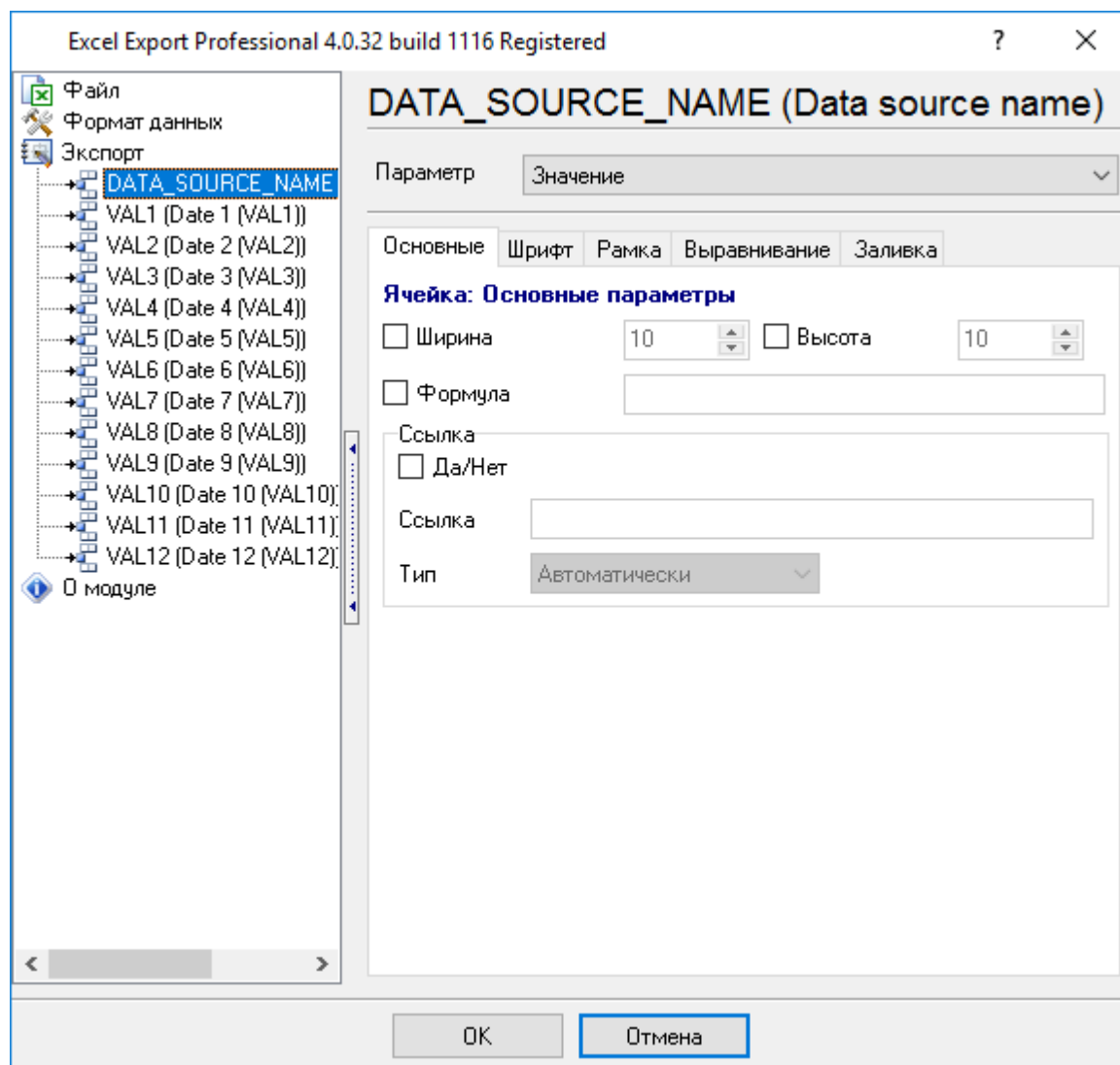
5.5.2



.6.

:

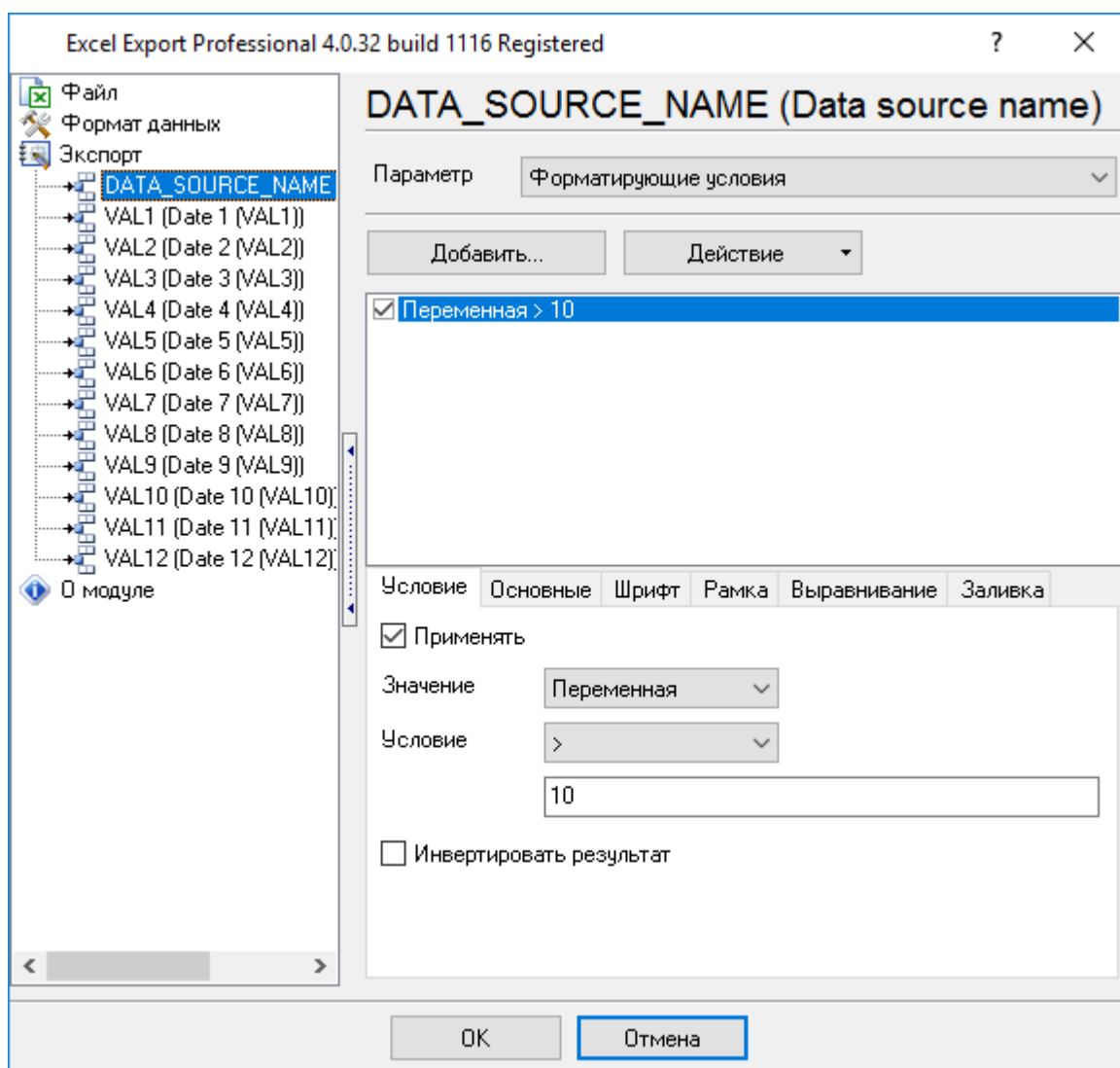
5.5.3



.7.

(. " _____"),

5.5.4



. 8.

(. " _____ ").

. 9.

- Добавить
- Удалить
- Удалить все
- Копировать

- Переместить в начало
- Переместить вверх
- Переместить вниз
- Переместить в конец

.9.

(.9).

```

1.      -      ;
2.      -      ;
3.      -      ;
4.      -      ;
5.      -      ;
6.      -      ;
7.      -      ;
8.      -      ;
      -      ;
      (      "      ") -      ;
      (      "      ") -      ;
      - "="      ;
1. =, <>, <, >, <=, >= -      ;
2.      -      ;
3.      -      ;
      "      "      "      "      ;
4.      -      ;
      -      "      "      1-
      ,      -      "      1      1" -
      ;
5.      -      ;
6.      ;
7.      -      ;
8.      -      (null);
9.      -      ;
10.     -

```

1. - ;
 2. - ;
 3. - ;
 4. - ,
- ASCII ;
- " " , " " ,

5.5.5

| Условие | Основные | Шрифт | Рамка | Выравнивание | Заливка |
|-----------------------------------|----------|---------------|--------------------------|--------------|---------|
| Ячейка: Основные параметры | | | | | |
| <input type="checkbox"/> | Ширина | 10 | <input type="checkbox"/> | Высота | 10 |
| <input type="checkbox"/> | Формула | | | | |
| Ссылка | | | | | |
| <input type="checkbox"/> | Да/Нет | | | | |
| | Ссылка | | | | |
| | Тип | Автоматически | | | |

. 10.

- ;
- ;
- MS Excel. ;
- / - / ;
 - - : <http://www.aggsoft.com>. ;
 - - ;
1. **Auto** - Excel ();
 2. **URL** - : <http://google.com> , <http://wikipedia.org> , mailto:user@mail.box;
 3. **File** - : c:\My

| | A | B | C |
|---|-----------|-------------|---|
| 1 | None | text | |
| 2 | Single | <u>text</u> | |
| 3 | Double | <u>text</u> | |
| 4 | SingleAcc | <u>text</u> | |
| 5 | DoubleAcc | <u>text</u> | |
| 6 | | | |
| 7 | | | |


. 12.

Условие Основные Шрифт Рамка Выравнивание Заливка

Ячейка: Параметры рамки

Сторона

Левая Стиль Нет

Правая Цвет 

Верхняя

Нижняя

Все

. 13.

1. Left -
2. Right -
3. Top -
4. Bottom -
5. All -

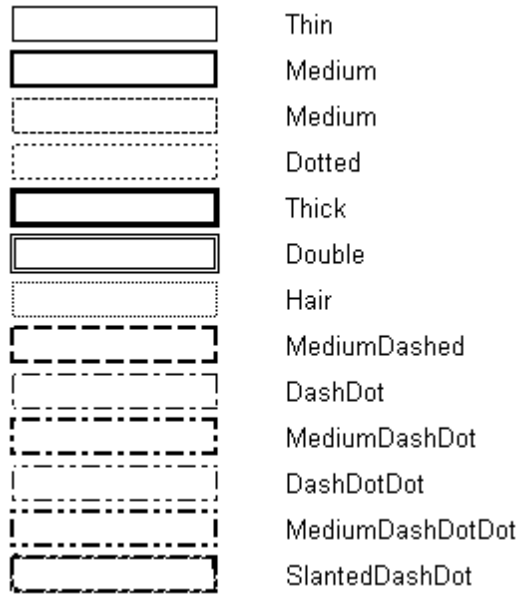
1, 2, 3 4

5

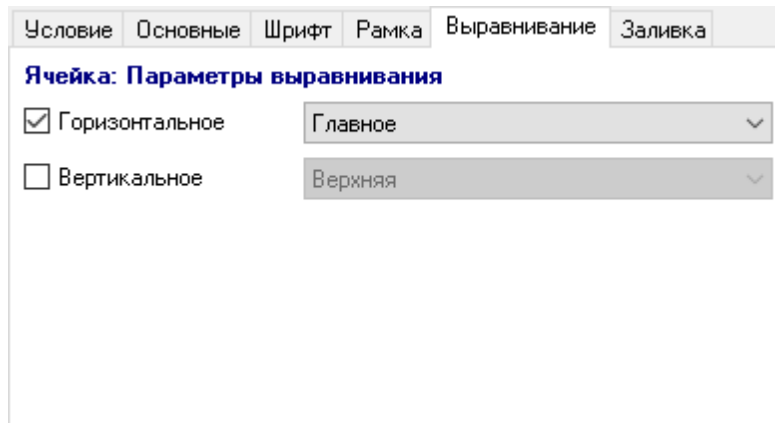
5

1 4.

(None, Thin, Medium, Dashed, Dotted, Thick, Double, Hair, MediumDashed, DashDot, MediumDashDot, DashDotDot, MediumDashDotDot, SlantedDashDot.



. 14.



. 15.

: General (), Left, Center, Right, Fill, Justify, CenterAcrossSelection.

| | A | B | C |
|----|-----------------------|----------------------------------|----------------------|
| 1 | Alignment | Text sample | Number sample |
| 2 | General | text | 100 |
| 3 | Left | text | 100 |
| 4 | Center | text | 100 |
| 5 | Right | text | 100 |
| 6 | Fill | texttexttexttexttexttexttexttext | 100100100100100 |
| 7 | Justify | text | 100 |
| 8 | CenterAcrossSelection | text | 100 |
| 9 | | | |
| 10 | | | |

. 16.

Justify. : Top (), Center, Bottom,

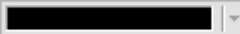
| | A | B | C | D | E | F | G | H |
|---|---------|--|---|---|---|---|---|---|
| 1 | Top | You can connect a camera to the computer and transfer images direct from the camera. | | | | | | |
| 2 | Center | You can connect a camera to the computer and transfer images direct from the camera. | | | | | | |
| 3 | Bottom | You can connect a camera to the computer and transfer images direct from the camera. | | | | | | |
| 4 | Justify | You can connect a camera to the computer and transfer images direct from the camera. | | | | | | |
| 5 | | | | | | | | |
| 6 | | | | | | | | |
| 7 | | | | | | | | |

. 17.

Условие Основные Шрифт Рамка Выравнивание **Заливка**

Ячейка: Параметры заливки

Стиль Сплошной

Передняя сторона 

Фон 