



Serial Printer Logger

1 **1**

1 Serial Printer Logger 1

2 2

2 **4**

1 4

2 5

3 5

4 6

3 **6**

1 6

2 6

4 **7**

1 7

2 8

3 10

4 11

5 11

5 **12**

1 12

(COM) 12

2 17

TCP/IP 17

3 24

..... 24

..... 25

..... 27

4 - 28

- 28

- 31

..... 32

PDF/RTF 33

..... 33

..... 33

5 35

..... 35

.....	37
.....	39
.....	40
Windows 2000	41
.....	41
Windows Vista	44
.....	45

6 RS-232 0

1 RS-232	0
2 DB9 (9 pin) RS-232	0
3 DB25 (25 pin) RS-232	0
4 RS-232	0
5 RS-232	0

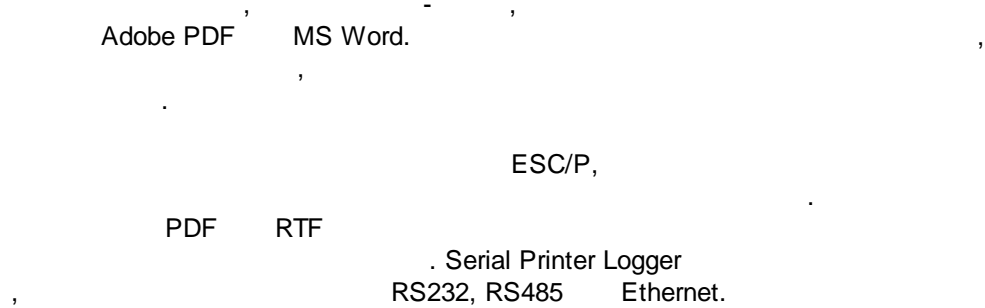
7 ? 46

1	46
---------	----

1

1.1 Serial Printer Logger

Serial Printer Logger



Serial Printer Logger:

-
- ESC/P ESC/P,
- ;
- bitmap;
- ;
- ;
- ;
- ; Microsoft Word (RTF) Adobe PDF;
- ;
- ;
- ; Windows 9x/Me/NT/2000/XP/Vista, x86 x64.

Serial Printer Logger Windows NT/2000/XP,

Serial Printer Logger

!

Serial Printer Logger -
(PC),

-
-
-

: <http://www.aggsoft.ru/>
: <http://www.aggsoft.ru/serial-printer-logger.htm>

1.2

ASCII - ASCII -

Windows
ASCII. ASCII *.TXT (,
README.TXT).

Binary File -

ASCII (0 255).

Bytes () -

Bit () - : 0 1. 8
8 ()

Baud Rate -

(),

BPS

600 , 2400 bps (),

Cable () -

COM port -

4

IBM IBM-
COM1, COM2, COM3 COM4.

Client/Server (/) -

(, , . .)
()

Data bits -

(),

DNS (Domain Name System) - DNS

(TCP/IP) IP DNS www.aggsoft.com
198.63.211.24.

Flow control -

" "

Handshaking -

Internet () - TCP/IP

IP, Internet Protocol () - Internet Protocol,

TCP/IP, IP IP , 'xx.xx'.
xx.xx'.

IP (Internet Protocol) - TCP/IP.

IP , IP . IP
: 198.63.211.24.

LAN (Local Area Network) -

NIC, Network Interface Card () -

turbochannel, nuBus, .) (PCI, , 10baseFL).

PC () - Personal Computer ().

Ports () -

Protocol () -

RS232, RS423, RS422 RS485 - Electronics Industry Association (EIA)

RS232, RS423, RS422, RS485,
EIA "RS" , ,
(recommended standard).
"EIA".

Stop bits () -

1 2.

TCP/IP, Transport Control Protocol / Internet Protocol - TCP IP

TCP/IP
Internet.

(Log file) - (. log) —

2

2.1

Copyright © 1999-2016 AGG Software.
All Rights Reserved

1. Serial Printer Logger

2.

3. Serial Printer Logger

4.

5. Serial Printer Logger
sales@aggsoft.ru

6. Serial Printer Logger

Serial Printer Logger

7. **Serial Printer Logger**

"AS IS".

2.4

Serial Printer Logger	support@aggsoft.ru
	support@aggsoft.ru
	sales@aggsoft.ru

3

3.1

- Windows 2000 Professional SP 4;
- Windows 2000 Server;
- Windows XP x86 x64;
- Windows 2003 Server x86 x64;
- Windows Vista () x86 x64.
- Windows 7 () x86 x64.
- Windows 2008 Server () x86 x64.
- Windows 8 () x86 x64.

COM-

3.2

Serial Printer Logger.

Serial Printer Logger", Serial Printer Logger "\Programs Files\Serial Printer
Logger"

Serial Printer Logger

4

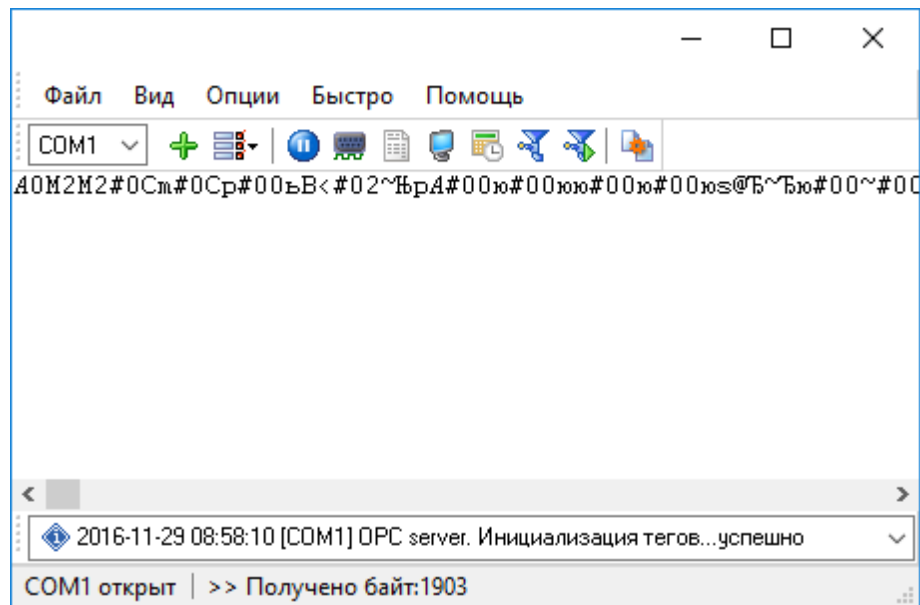
4.1

Serial Printer Logger

Serial Printer Logger " "

(. 1.1.1),

1.1.2)



. 1.1.1.

Просмотреть текущий лог-файл
 Показать протокол сообщений программы
 Создание резервной копии конфигурации
 Загрузка резервной копии конфигурации
 Выход

. 1.1.2.

C:\.

8

1-2-3-4

1.

" "

12

COM

2.

()

" ")

3.

35

4.

Serial Printer Logger

Serial Printer Logger

4.2

- RS-232
- RS-485

(
);

- " (- ;),

- COM -

[12]

" _____

(NIC).

- Serial Printer Logger IP (NIC),
- Serial Printer Logger IP IP ;
- Serial Printer Logger DHCP, IP IP ;
- IP IP 0.0.0.0.

" TCP/IP [17]

[28]

[31]

(. 1.1.1 [7]).

Serial Printer Logger

" _____ [24] ,

_____ [37]

Printer Logger

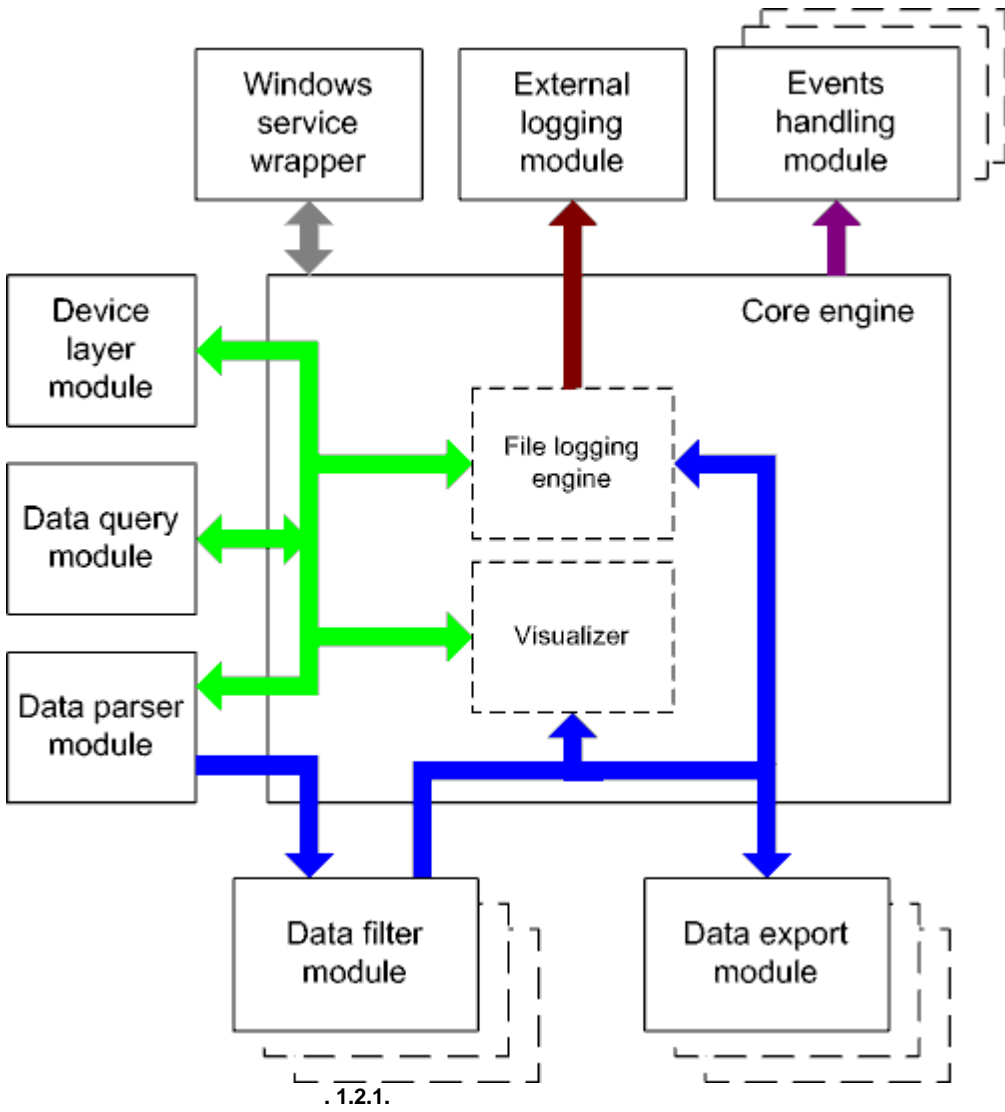
Serial Printer Logger. Serial
[35] (plug-ins),

" _____ [35]

(. 1.1.1 (7))

(40)

4.3



- Core engine -
- Device layer module -
- Data query module -
- Data parser module -
- Data filter module -
- Data export module -
- Visualizer -
- File logging engine -
- Windows service wrapper -
- External logging module -
- Events handling module -

4.4

Windows. / COM-

4.5

1.

2.

1.

2.

regedit.exe

Windows x64

HKEY_LOCAL_MACHINE\SOFTWARE\Wow6432Node\AGG Software\Serial Printer Logger

Windows x32

HKEY_LOCAL_MACHINE\SOFTWARE\AGG Software\Serial Printer Logger

3.

```

:
Ctrl+S - " / " ;
Ctrl+D - " / " ;
Ctrl+P - ;
Ctrl+L - log- ;
Ctrl+R - ;
Ctrl+E - Windows;
Ctrl+M - , .

```

4. , .
5. INI .
6. " " 10 ,

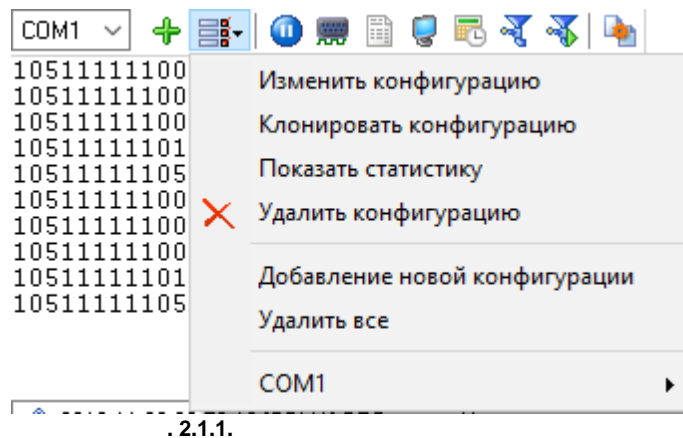
5

5.1

5.1.1 (COM)

([.1.1.1](#) ⁷⁴) " " ,
 (.2.1.2).
 COM " "

" " (.2.1.1).



COM-

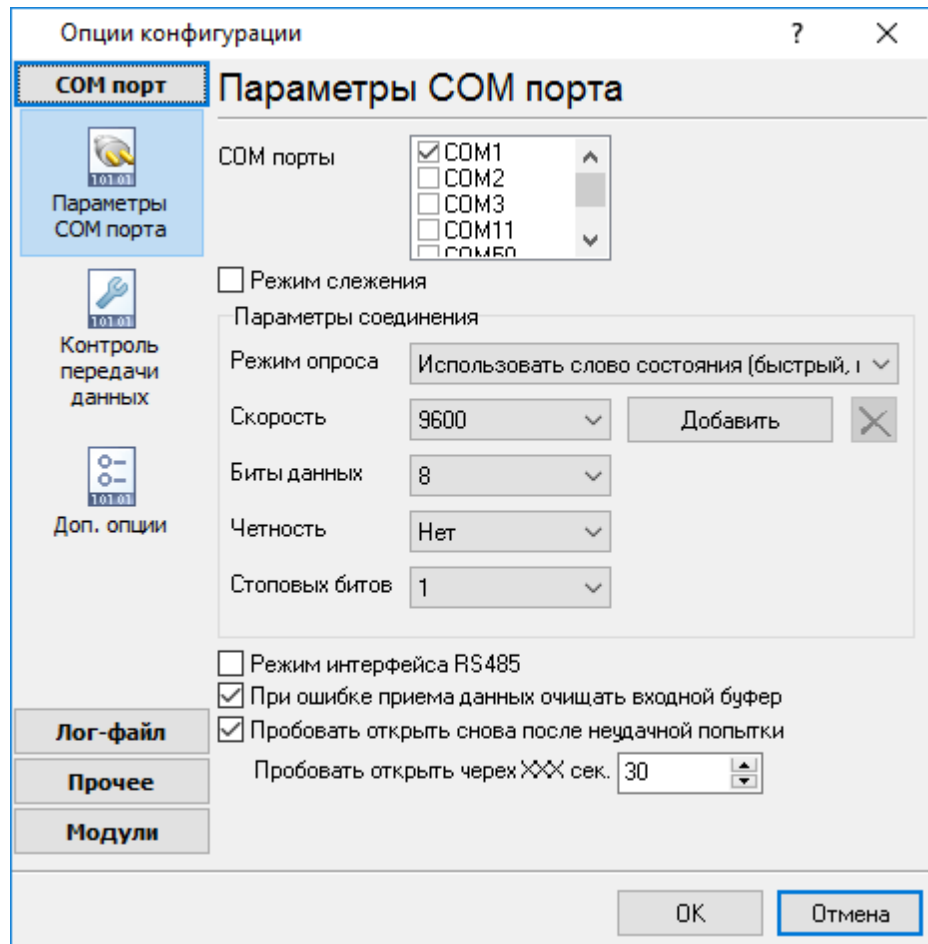
COM-

COM-

(. .)

"

" (. 2.1.1).



. 2.1.2.

COM-

RS-485

, RTS-

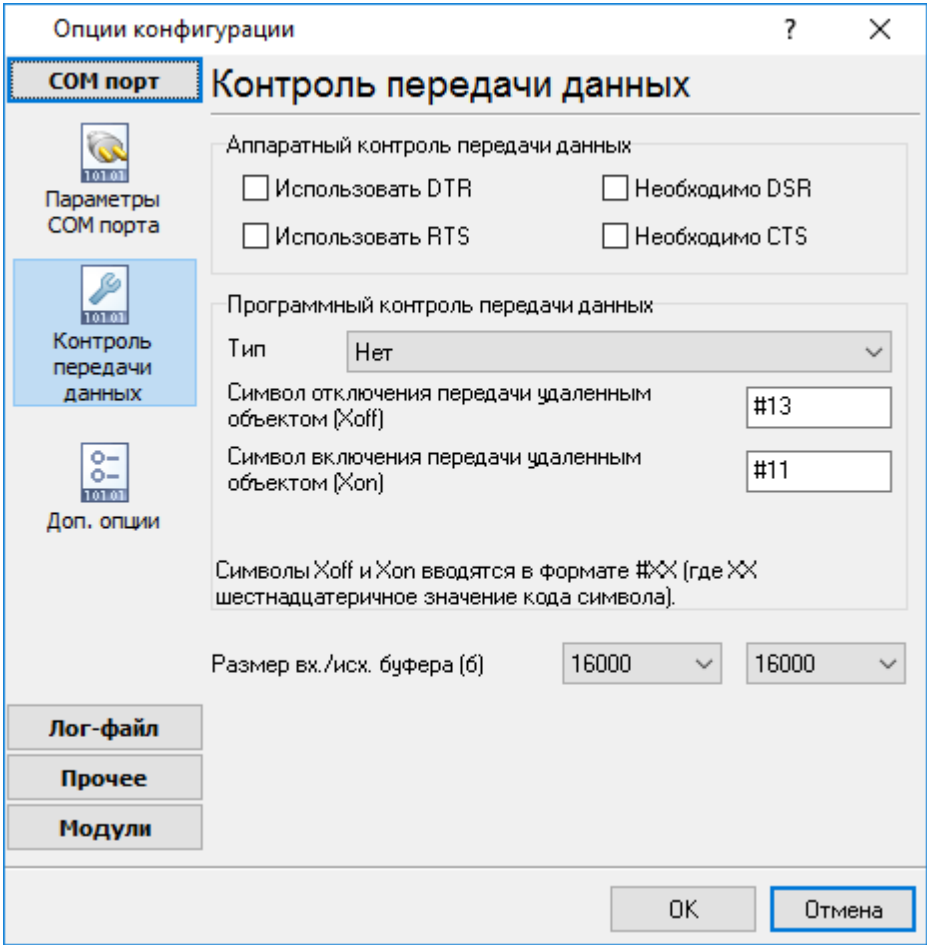
(,)

API- Windows
/ : API-
Windows.


```

API,
/
Windows
API
API - Serial Printer
Logger
(WRPI.DRV
Serial Printer Logger
( . 2.1.3).
"
"
"
"
DTR"
(RTS / DTR)
90%
10%
DSR"
Windows
(CTS / DSR).
RTS CTS
DTR DSR.

```

. 2.1.3

./ . COM

Serial Printer Logger

COM-

COM-

" "

Serial Printer Logger,
COM-

Printer Logger.

Serial

UART (UART receiver parity error) -

;

UART (UART receiver overrun),
UART (UART receiver framing error) -

;

CTS (transmit timeout waiting for CTS),
DSR (transmit timeout waiting for DSR),
RLSD (transmit timeout waiting for RLSD) -

,

;

(transmit queue is full) - Serial Printer Logger

;

break (break condition received)

Windows NT

" ->

" [\[12\]](#)

5.2

5.2.1 TCP/IP

UDP TCP

(User Datagram Protocol). TCP

TCP (Transport Control Protocol) UDP

IP. TCP

TCP

, TCP

, UDP

UDP

UDP

TCP, UDP

IP

TCP, UDP

Messaging, UDP IP Instant

Serial Printer Logger

TCP/IP

(TCP/IP) Serial Printer Logger

1. TCP/IP, IP Serial Printer Logger
(www.yourserver.com) "Plant1",
"Plant1" IP IP
Serial Printer Logger IP

2. IP Serial Printer Logger
IP (NIC),
Serial Printer Logger IP

Microsoft Windows, TCP/ IP IP

Serial Printer Logger "OK" TCP/IP.
IP Serial Printer
Logger

Serial Printer Logger

(. 1.1.1 | 7).

(. 1.1.1 | 7)

(. 2.2.2).
IP"

TCP/IP

" " (.2.2.1).

0.0.0.0:7777

- +
- ☰
- ⏸
- 🖨
- 📄
- 🖥
- 🔄
- 🔍
- 📁

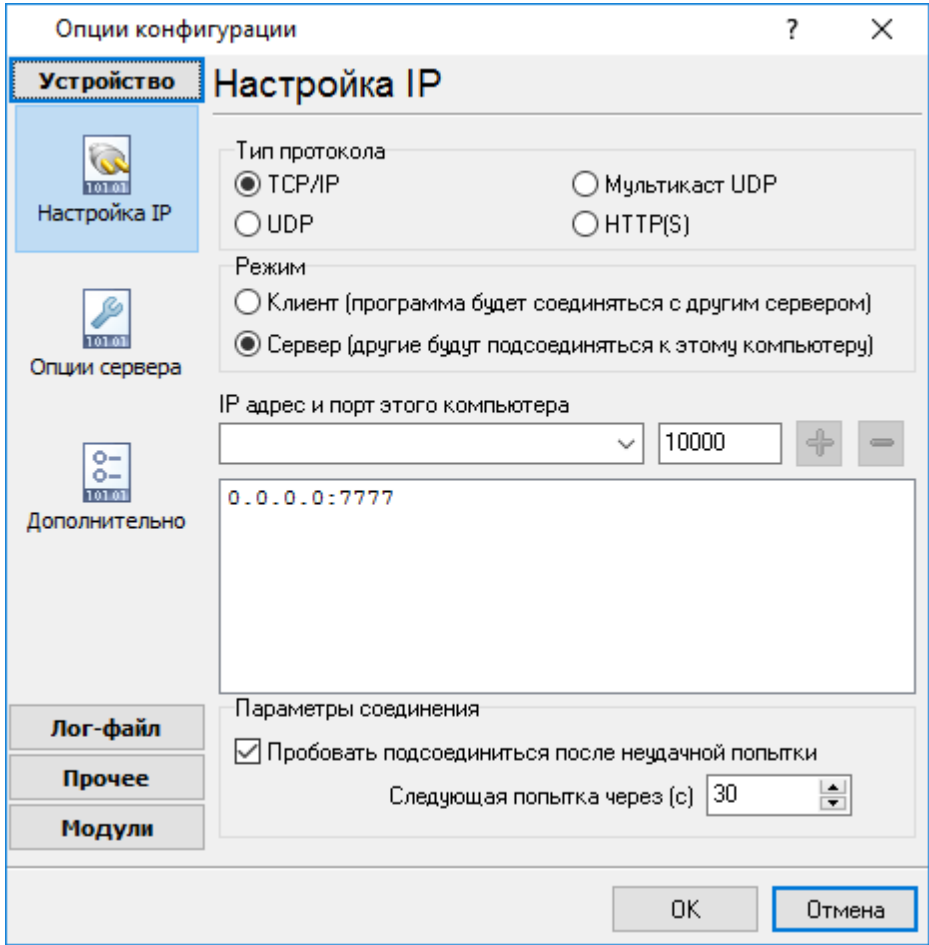
1051111110026#0
1051111110019#0
1051111110033#0
1051111110123#0
1051111110521#0
1051111110026#0
1051111110019#0
1051111110033#0
1051111110123#0
1051111110521#0

- Изменить конфигурацию
- Клонировать конфигурацию
- Показать статистику
- Удалить конфигурацию
- Добавление новой конфигурации
- Удалить все

0.0.0.0:7777

.2.2.1.

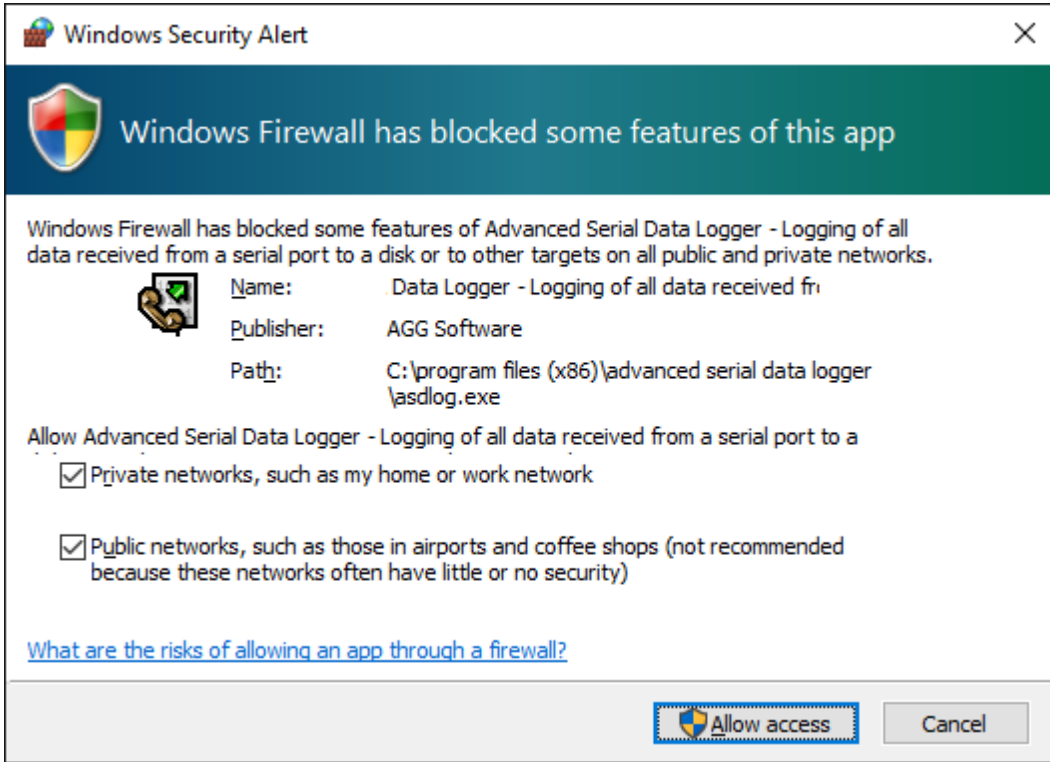
IP: IP " IP" TCP/



. 2.2.2. TCP/IP

IP , , .
SMTP - 25, the telnet - 23, NNTP -
119, . . .
SERVICES, Windows (Windows NT
WINNT\SYSTEM32\DRIVERS\ETC). SERVICES -
Serial Printer Logger) (,
) . ()
IP (socket).

Serial Printer Logger
IP
IP
(
)
(
)
(
)
Serial Printer Logger
N
IP
IP
Serial Printer Logger
IP
(**firewall**)
Microsoft Windows XP SP2
Windows Firewall,
Serial Printer Logger
Windows Firewall
(Security Alert).
:



. 2.2.3.

-
-
-

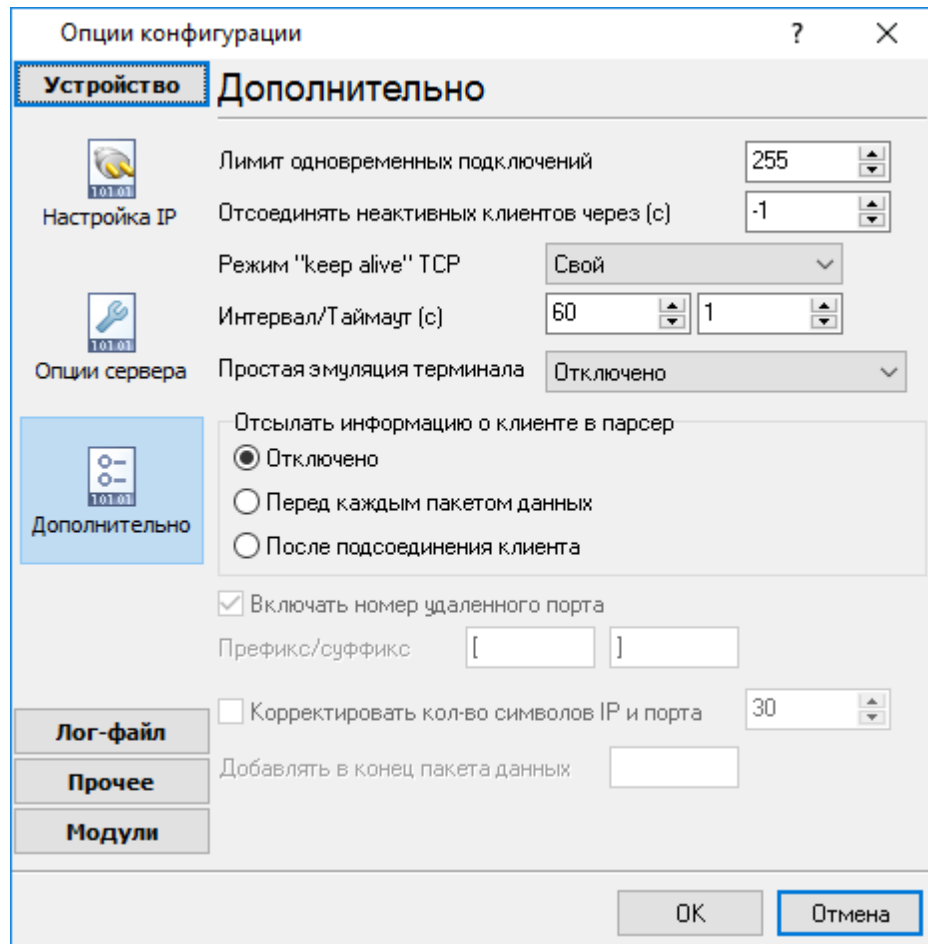
(. 2.2.4).

TCP/IP

"TCP/IP ":

() -

"-1",



. 2.2.4.

TCP/IP

keep-alive TCP () -

keep-alive,

Windows.

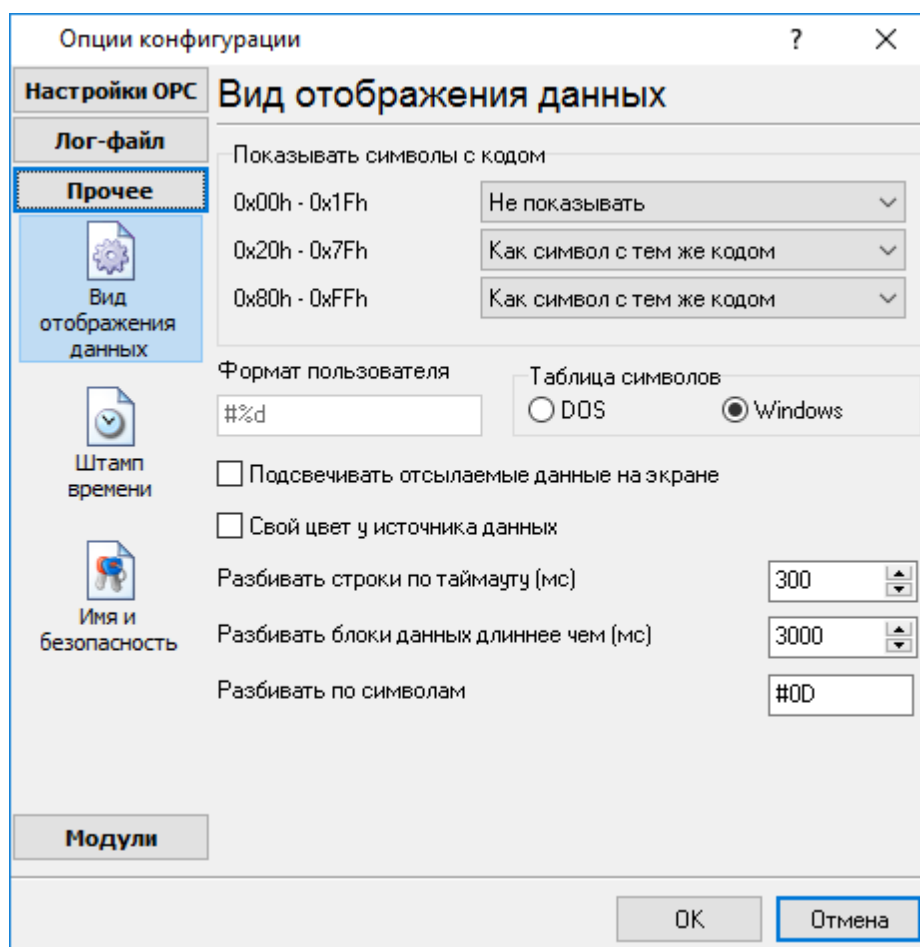
keep-alive

(TCP

UDP):

5.3

5.3.1



. 3.1.1.

" (. 3.1.1)

Hex-

%d

, %x -

(OEM).

: Windows DOS

0,

0,

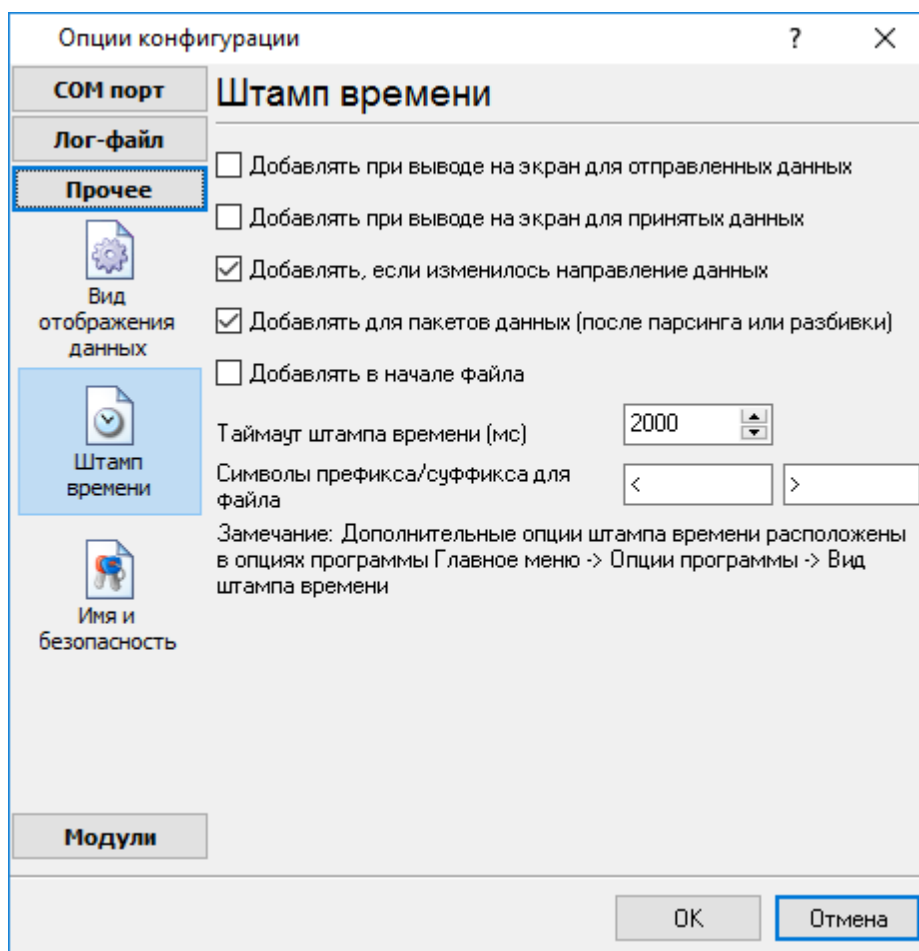
. 3.1.1

5.3.2

(. 3.2.1)

()

 39.



. 3.2.1.

()

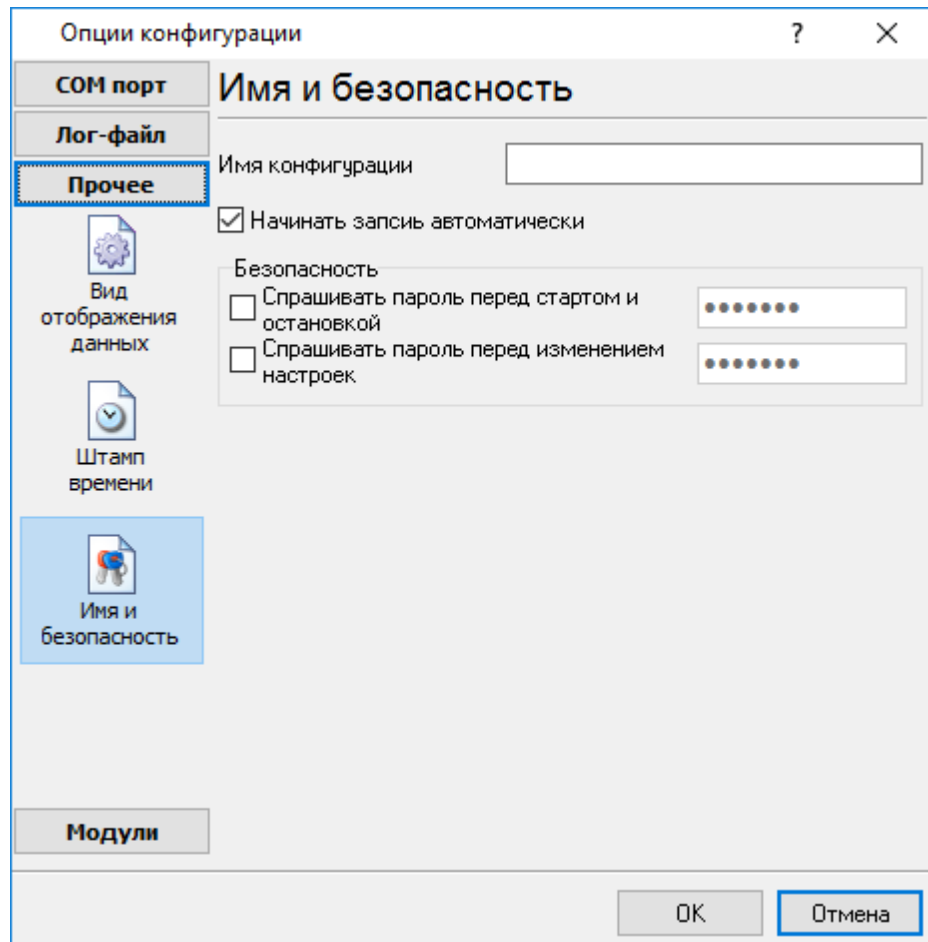
(/).

39

: >#0D#0A

5.3.3

(. 3.3.1)

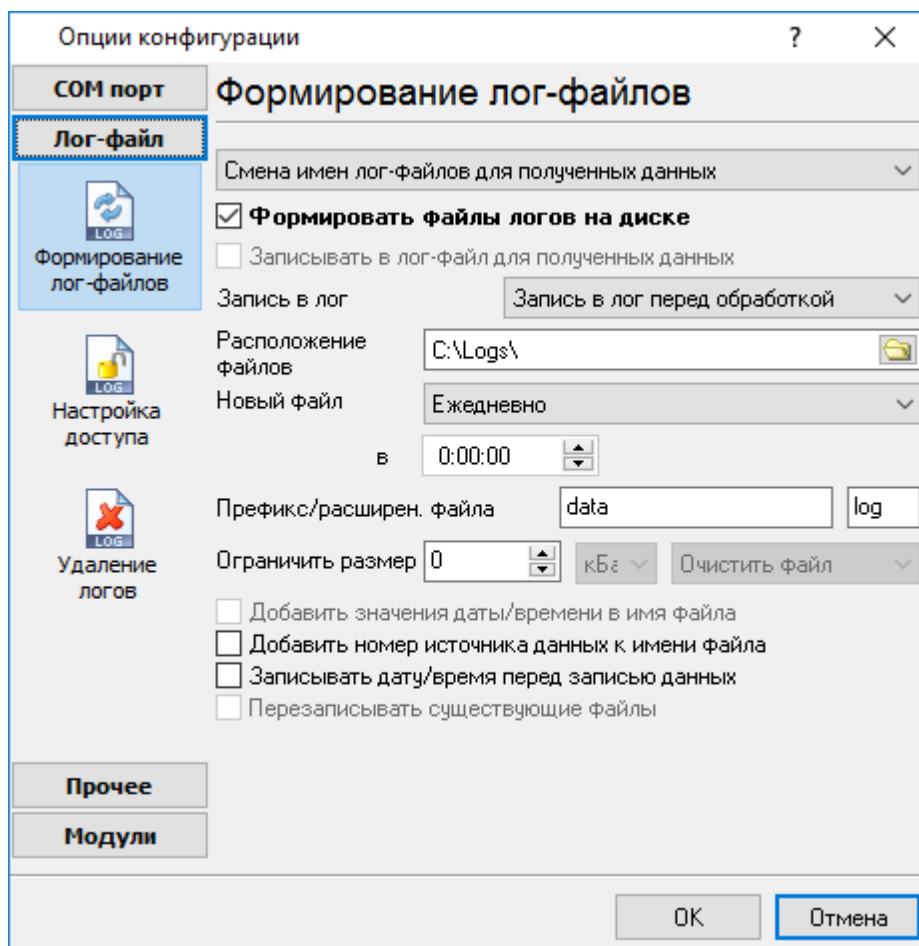


. 3.3.1.

5.4

5.4.1

(рис. 4.1.1).



4.1.1.

"OK".

Serial Printer Logger

```

•
•
" " "log ", "sample",
" ", "sampleYYYYMMDD.
log". 21- 2003 "sample20030321.log".
•
( ).

```

1. DDMMYYYY, DD - , MM -
YYYY - ;
2. MMYYYY;
3. YYYYMMDD;
4. : sample00000001.log.
5. ;
6. WWYYYY, WW -
YYYY -
7. ;
8. HHDDMMYYYY;
9. - -

```

d - , (1 - 31);
dd - , (01 - 31);
ddd - ( - )
;
dddd - ( - )
;

```



```

m      -      ,      (1 - 12);
mm     -      ,      (01 - 12);
mmm    -      (   -   )      ,
      ;
mMMM -      (   -   )      ,
      ;
yy     -      (00 - 99);
yyyy  -      (0000 - 9999);
h      -      ,      (0 - 23);
hh     -      ,      (00 - 23);
n      -      ,      (0 - 59);
nn     -      ,      (00 - 59);
s      -      ,      (0 - 59);
ss     -      ,      (00-59).

```

```

:      "sample_log",      "txt".
:      = sample_log_,      = txt (      !).
      HHDDMMYYYY.

```

4 7 /

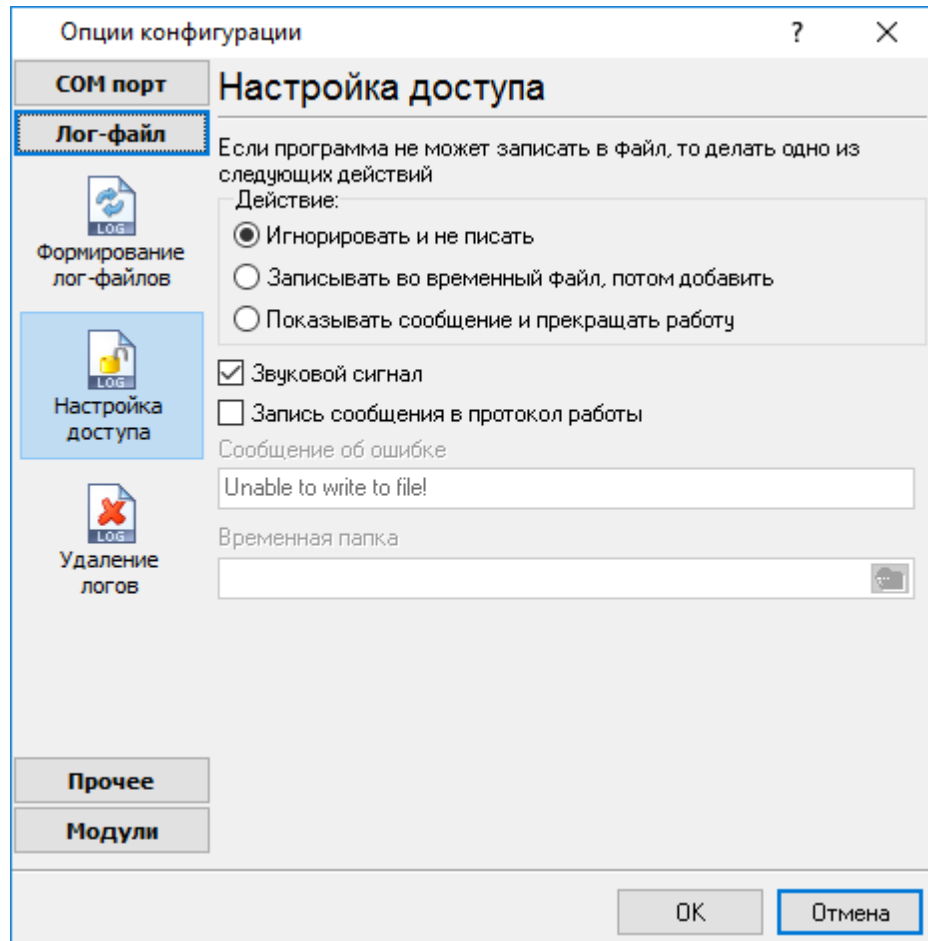
sample20030321.log. , COM1- /

4 7.

1. - !
2. -
3. () -
4. ().

5.4.2

Microsoft Office (Microsoft Word),
Serial Printer Logger



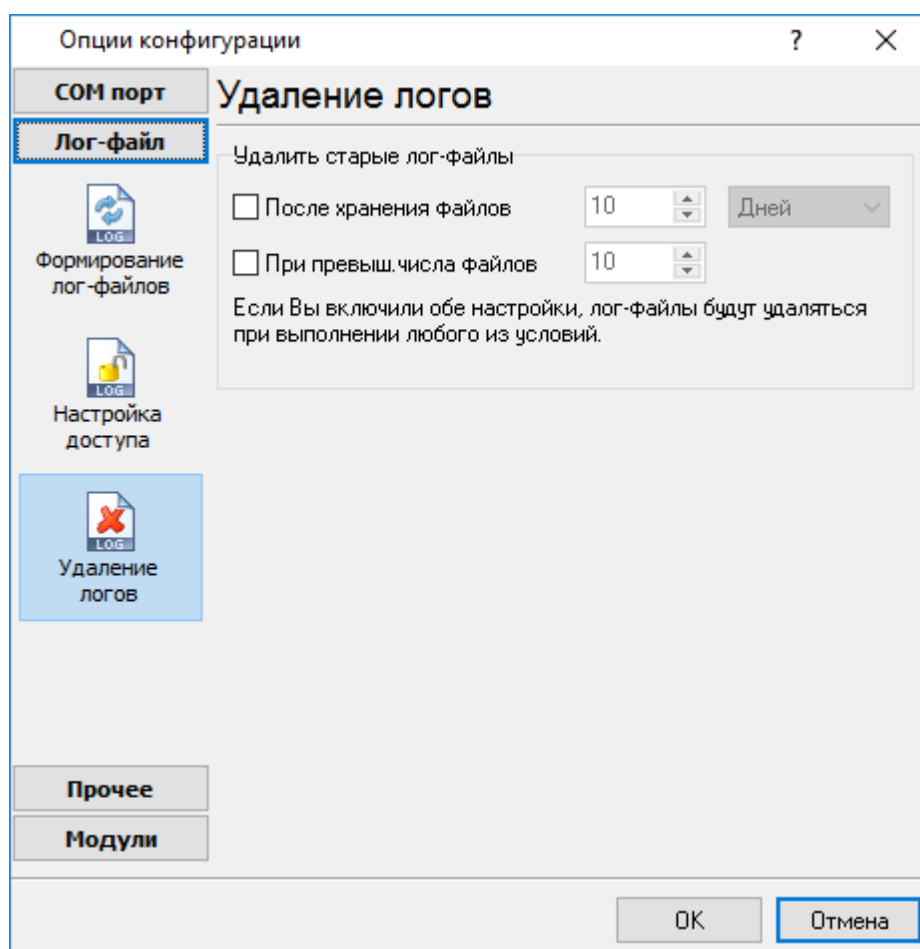
. 4.2.1.

Serial Printer Logger
4.2.1),

-
-
-

5.4.3

(рис. 4.3.1).



. 4.3.1.

5.4.4 PDF/RTF

5.4.4.1

"PDF logging" "RTF logging"
 Adobe PDF Microsoft Word RTF.

ESC/P EPSON
 ESC/P,
 ESC/P 2, EPSON
 ESC/P
 PDF/RTF

5.4.4.2

(.1):

- ESC/P -
- LQ - (). LQ. LQ
- / ;
- - ;
- - ;
- Courier. Fixedsys, Courier;
- - " ESC/P",
- ; ESC/P
- - ;
- , ESC/P;
- -
- (<TAB> ASCII) ESC/P.

Параметры документа

Добавлять перевод строки после возврата каретки

Добавлять возврат каретки после перевода строки

Декодировать управляющие коды ESC/P

Режим LQ

Новый файл при команде Прогон Страницы

Новый файл при команде Извлечение Страницы

Параметры бумаги Letter 8 1/2 x 11 in

Размер бумаги (мм) Ш 210 В 295

Ориентация страницы Портретная

Тип шрифта и размер MS Sans Serif 8

Набор символов ANSI Embedded font

Цвет шрифта/страницы

Стиль шрифта

Жирный Наклонный Перенос слов

Размер табуляции 4

Инициальт

Время ожидания

Закреть файл (мс) 3000

Закреть файл

Сбросить (мс) 5000

Сбросить

.1

()

()-

()-

ESC/P.

-
-

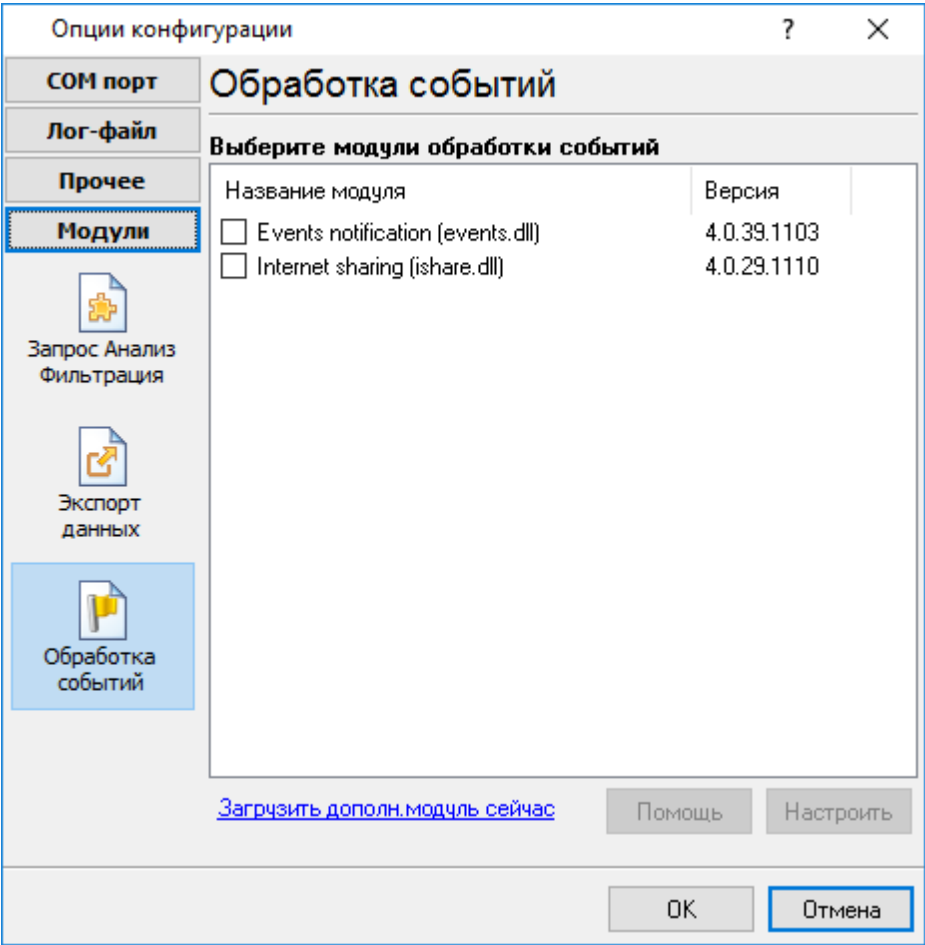
5.5

5.5.1

, (,) , " " (. .).

Serial Printer Logger

- (, ,) - ()
 - , - ;
 - (. 5.1.3) - , Excel ;
Serial Printer Logger. , " - " "
- 5.1.1.

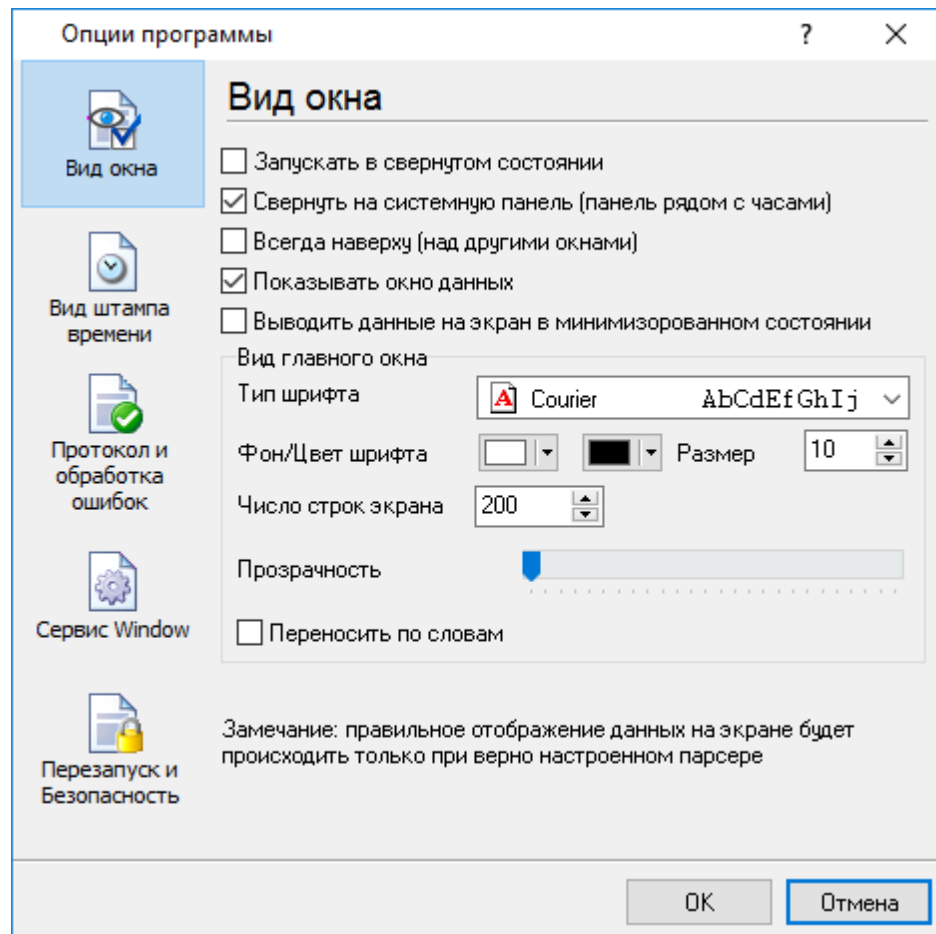


. 5.1.3.

"OK".

5.6

5.6.1

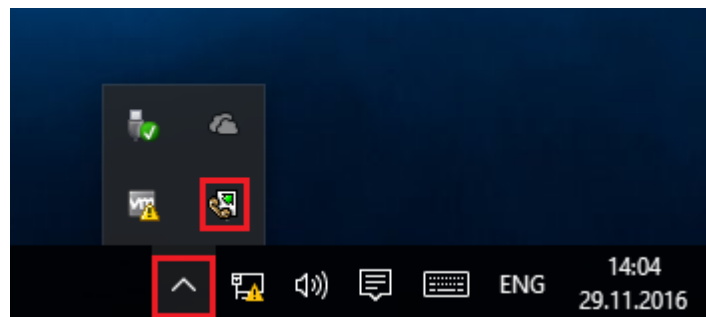


. 6.1.1.

" (. 6.1.1) :

- Serial Printer Logger

(. 6.1.2) ;



. 6.1.2.

-

(. 6.1.2) -

Serial Printer Logger

;

;

-

/

;

);

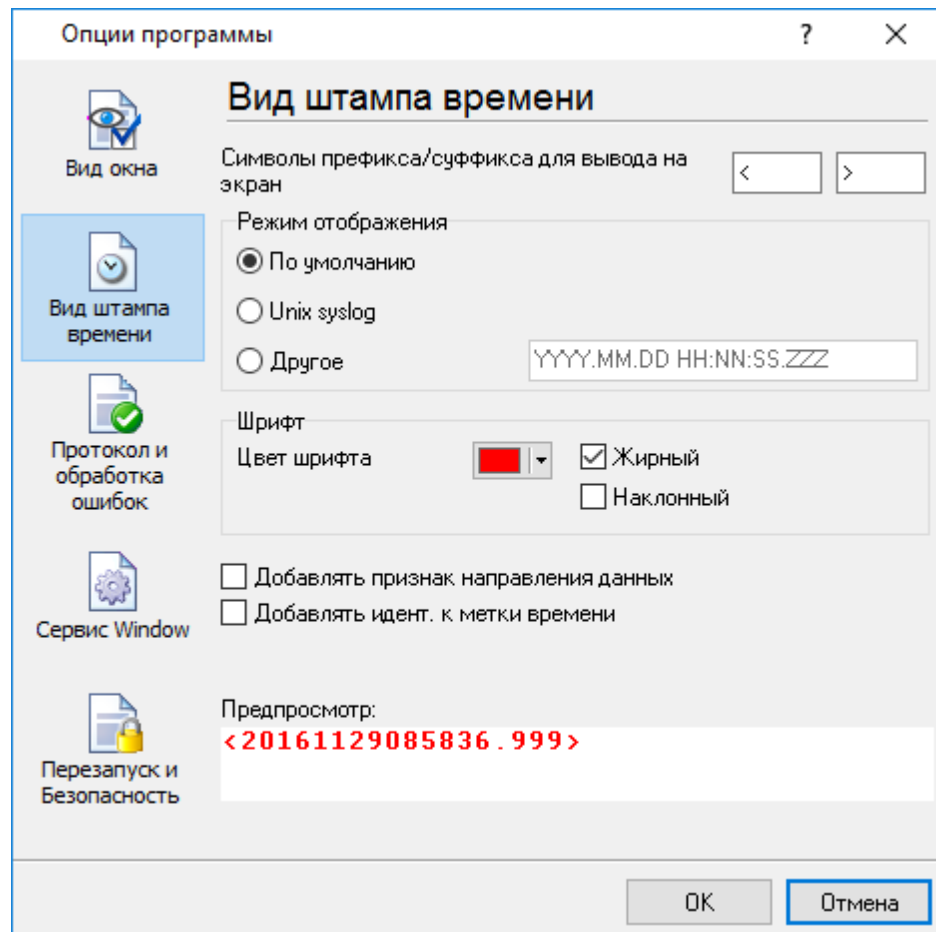
(, ,

- Windows 2000

;

5.6.2

(6.2.1)



. 6.2.1.

25

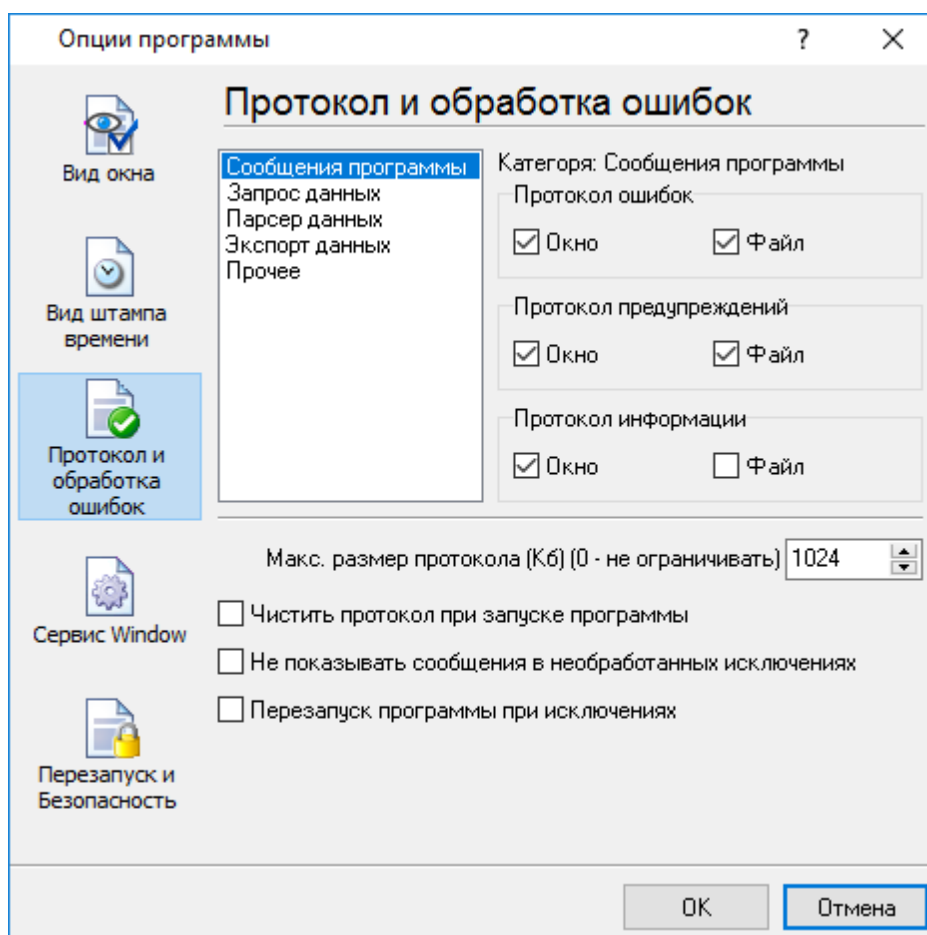
TX

RX

, COM1.

5.6.3

.log.



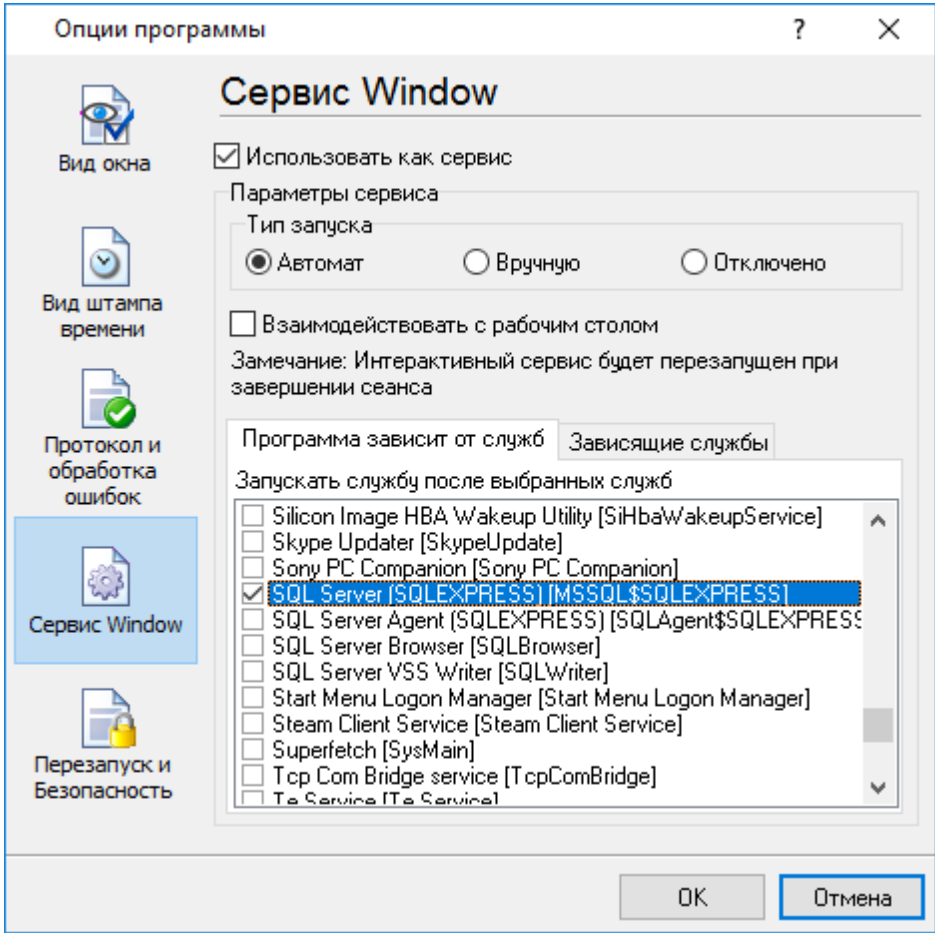
. 6.3.1.

Serial Printer Logger

3-

:

-
-
-



. 6.4.1.

1. - Windows
2. - ; " " ;
3. - .

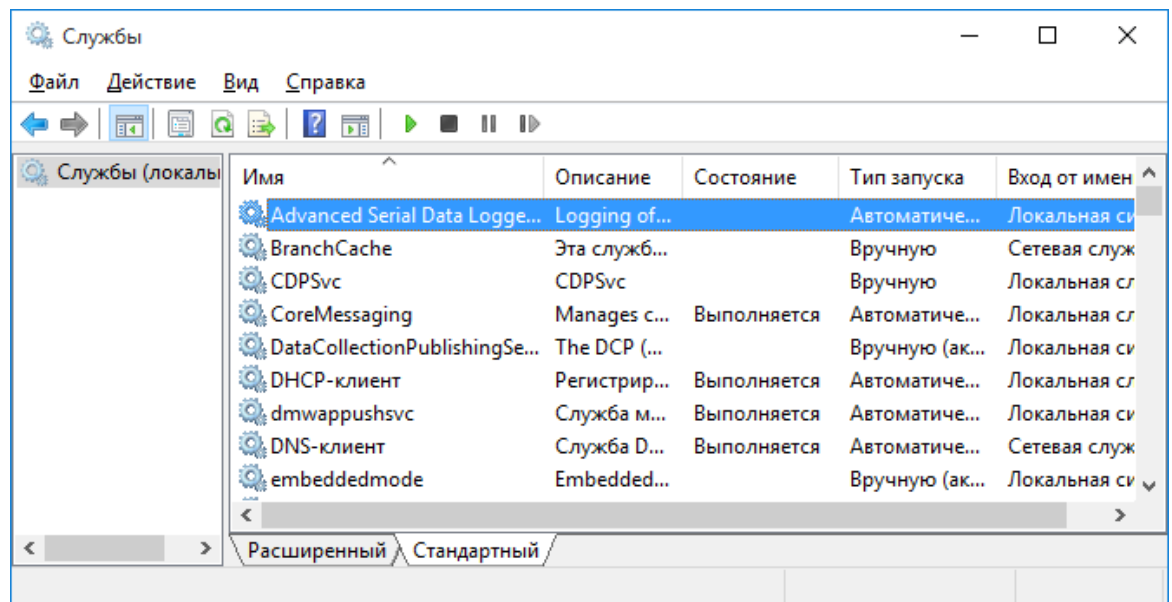
" .
 (. 6.4.2).
 ", . . Windows



. 6.4.2

Serial Printer Logger, " ' " (. 6.4.1)

' " " ' (. 6.4.3).



. 6.4.3.

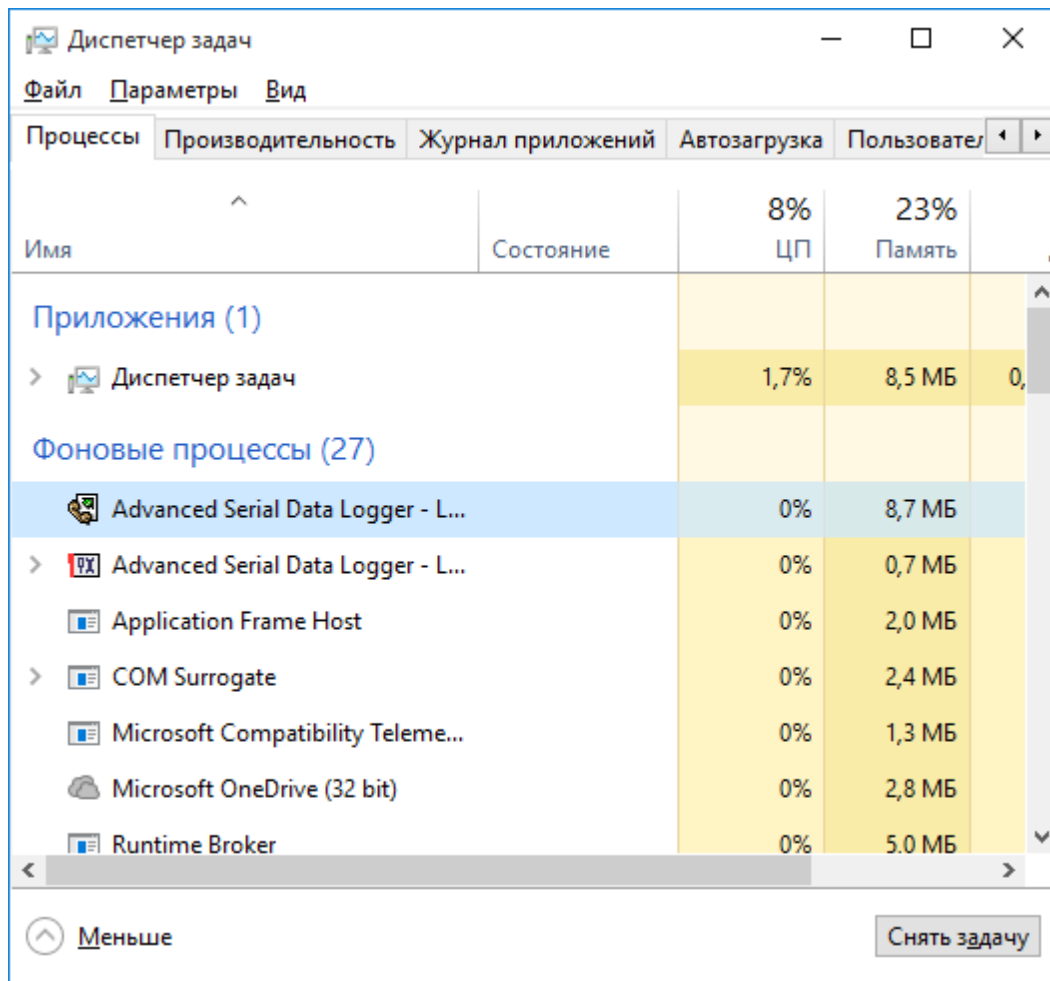
(Windows 2000)

exe (. 6.4.4).

Serial Printer Logger
Serial Printer Logger,
svany.exe

2

- sprloggersrv.exe sprlogger.



. 6.4.4.

sprnloggersrv.exe :

- /? - ;
- /I - ;
- /A - ;
- /D - ;
- /R -

5.6.4.2

Windows Vista

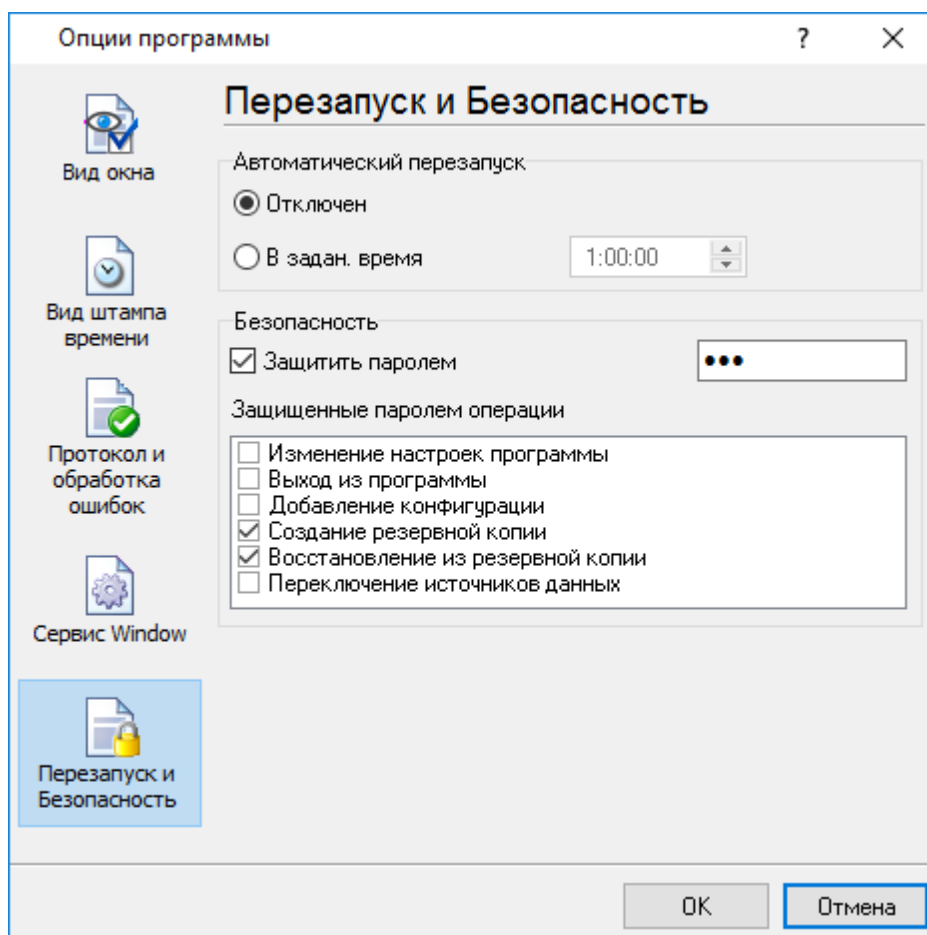
Windows Vista

Windows.

- : Interactive Services Detection
 - : UIODetect
 - : UIODetect.exe
 - :
 - : %windir%\system32\UIODetect.exe
 - :
- * Home Basic:
* Home Premium:
* Business:
* Enterprise:
* Ultimate:

5.6.5

(. 6.5.1).



. 6.5.1.

" "

7

?

7.1

, . . .

SoftIce

support@aggsoft.ru