



"InfluxDB HTTP Export"

<b>1</b>		<b>1</b>
<b>2</b>		<b>1</b>
<b>3</b>	<b>InfluxDB HTTP Export</b>	<b>2</b>
<b>4</b>		<b>3</b>
<b>5</b>		<b>3</b>
1	.....	3
2	.....	4
3	.....	6
<b>6</b>	<b>?</b>	<b>7</b>
1	.....	7

# 1

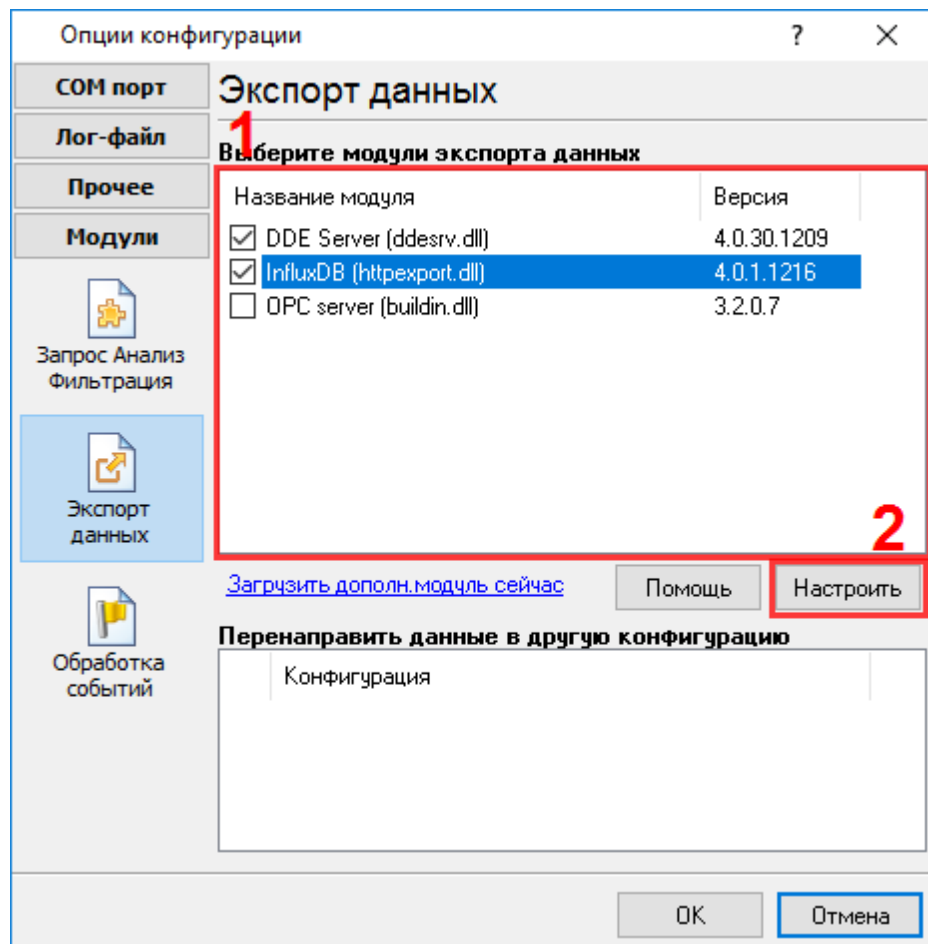
"InfluxDB HTTP Export" HTTP API  
InfluxDB  
SQL.

# 2

InfluxDB HTTP Export :  
: Windows 2000 SP4 , 32-x 64-x  
- : 5 MB  
:  
( ), Advanced Serial Data Logger.  
**Microsoft Vista** :  
Program Files,  
:  
1. ,  
2. ;  
3. Windows Vista .  
- Google.

### 3 InfluxDB HTTP Export

1. ( , Advanced Serial Data Logger),
  2. ;
  3. ;
  4. Windows;
  5. " " ;
- .1-2.
- " " " - " "
- " " " " "



.1.

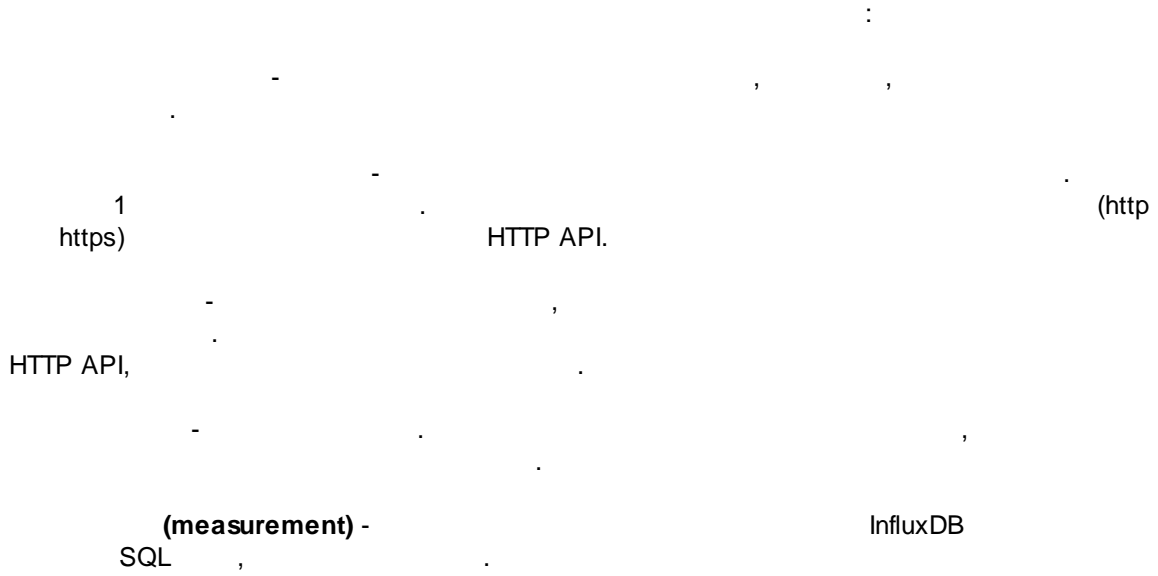
# 4

## Plug-in -

Advanced Serial Data Logger

# 5

## 5.1



InfluxDB 4.0.1 build 1216

**Параметры соединения**

Временно отключено

**Ссылка для отправки данных**

http://192.168.1.44:8086/write

**Метки и поля**

Логин

test

Пароль

●●●●●

**Обработка ошибок**

**База данных**

mydb

**Измерение**

measure

OK Отмена

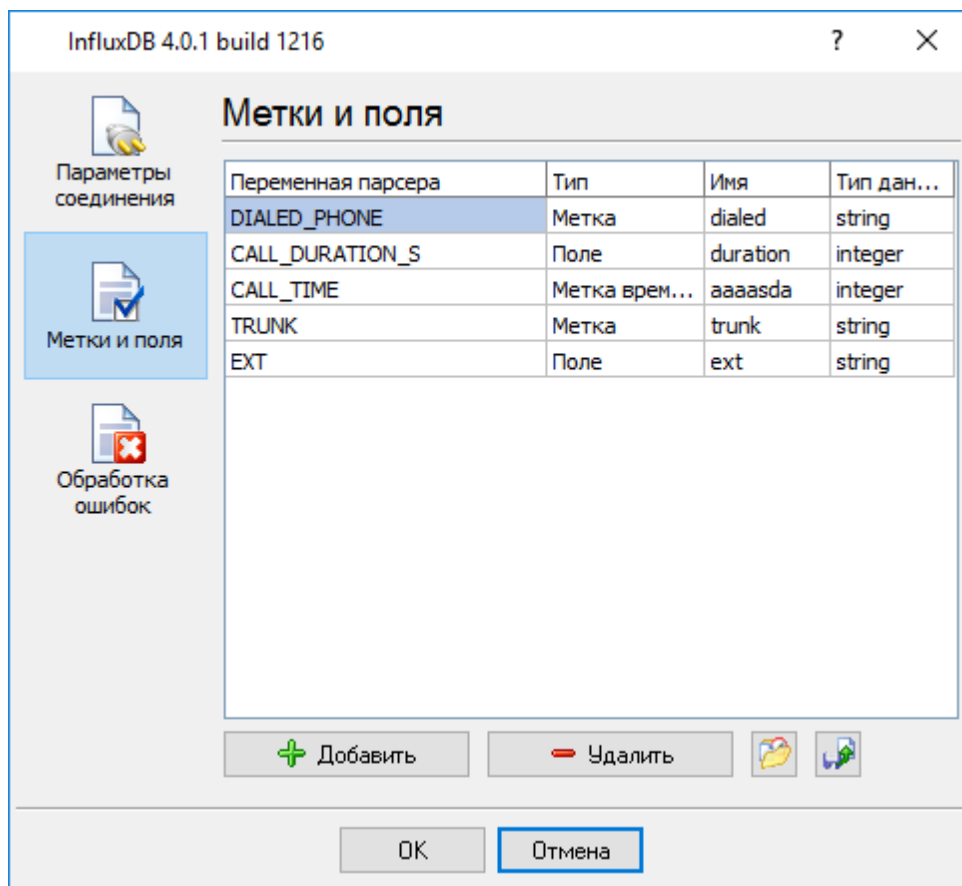
.1

## 5.2

SQL , " " (tag) " " (field) InfluxDB , " " -

integer, float, boolean. string,

.2



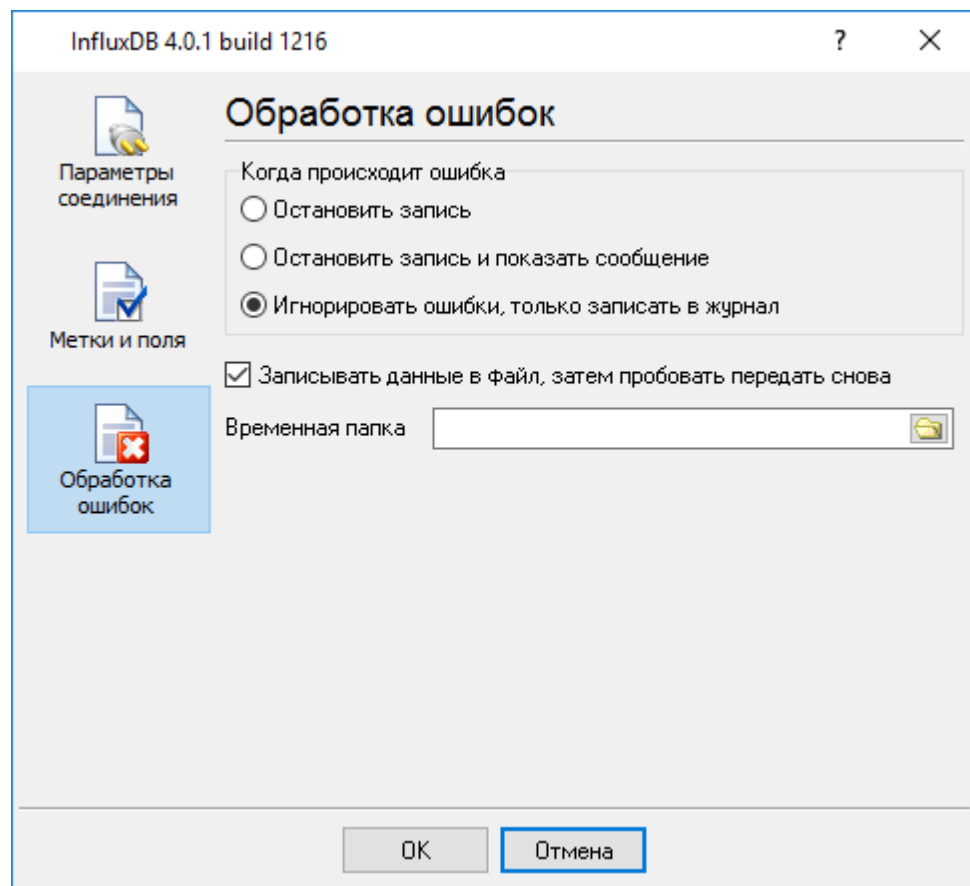
.2

(field),

( , ).

## 5.3

(рис. 3).



.3.

1.



2.

3.

## 6

?

### 6.1

"Plugins"

( )-

%s [%s] –

(%s) –

%s. (%s) –

%s. (%s) –

( , ).

[support@aggsoft.ru](mailto:support@aggsoft.ru).

"%s"