



"Excel Export"

1		1
2		1
3	Excel Export	2
4		3
5		3
6	?	6
1	6

1

"Excel Export" Excel

MS Excel

:

1. ;

2. ;

3. XLS ;

4. ;

2

Excel Export :

: Windows 2000 SP4 , 32-x 64-x

- :

5 MB

Advanced Serial Data Logger.

Microsoft Vista :

Program Files,

1. ;

2. ;

3. Windows Vista .

- Google.

3 Excel Export

1. (, Advanced Serial Data Logger),

2. ;

3. ;

4. Windows;

5. " " ;

6. " " ;

7. " " ;

8. " " ;

9. " " ;

10. " " ;

11. " " ;

12. " " ;

13. " " ;

14. " " ;

15. " " ;

16. " " ;

17. " " ;

18. " " ;

19. " " ;

20. " " ;

21. " " ;

22. " " ;

23. " " ;

24. " " ;

25. " " ;

26. " " ;

27. " " ;

28. " " ;

29. " " ;

30. " " ;

31. " " ;

32. " " ;

33. " " ;

34. " " ;

35. " " ;

36. " " ;

37. " " ;

38. " " ;

39. " " ;

40. " " ;

41. " " ;

42. " " ;

43. " " ;

44. " " ;

45. " " ;

46. " " ;

47. " " ;

48. " " ;

49. " " ;

50. " " ;

51. " " ;

52. " " ;

53. " " ;

54. " " ;

55. " " ;

56. " " ;

57. " " ;

58. " " ;

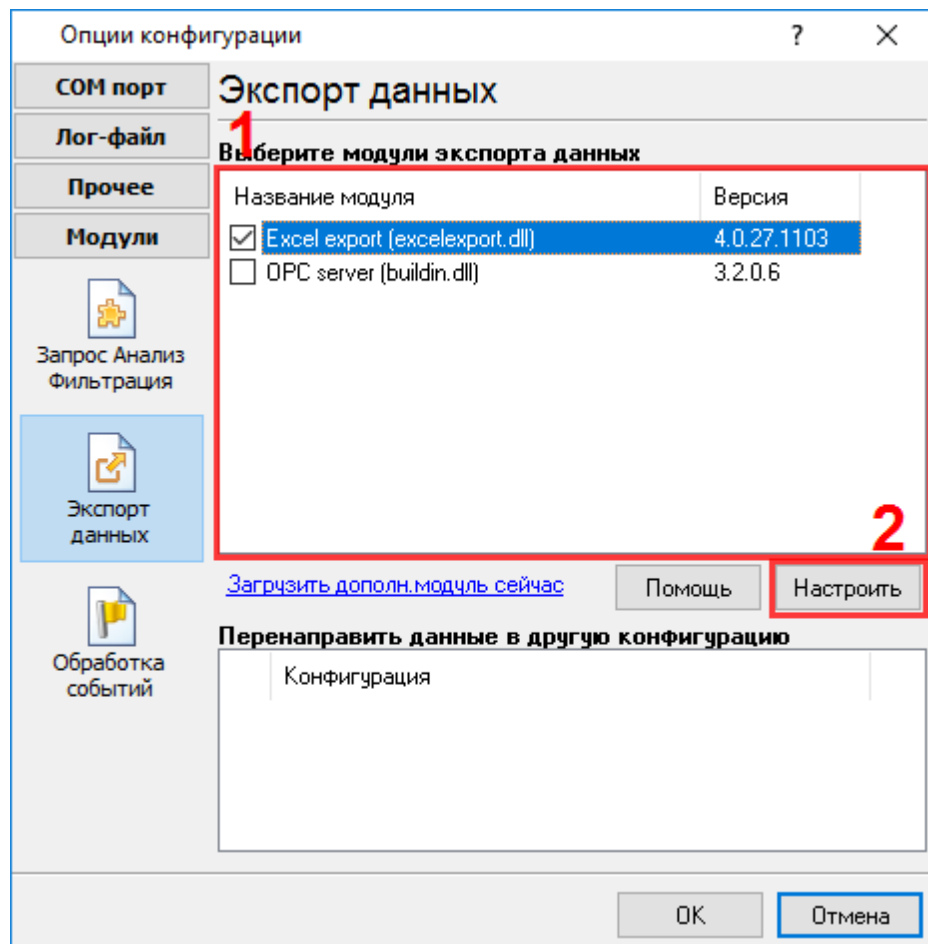
59. " " ;

60. " " ;

61. " " ;

62. " " ;

63. " " ;



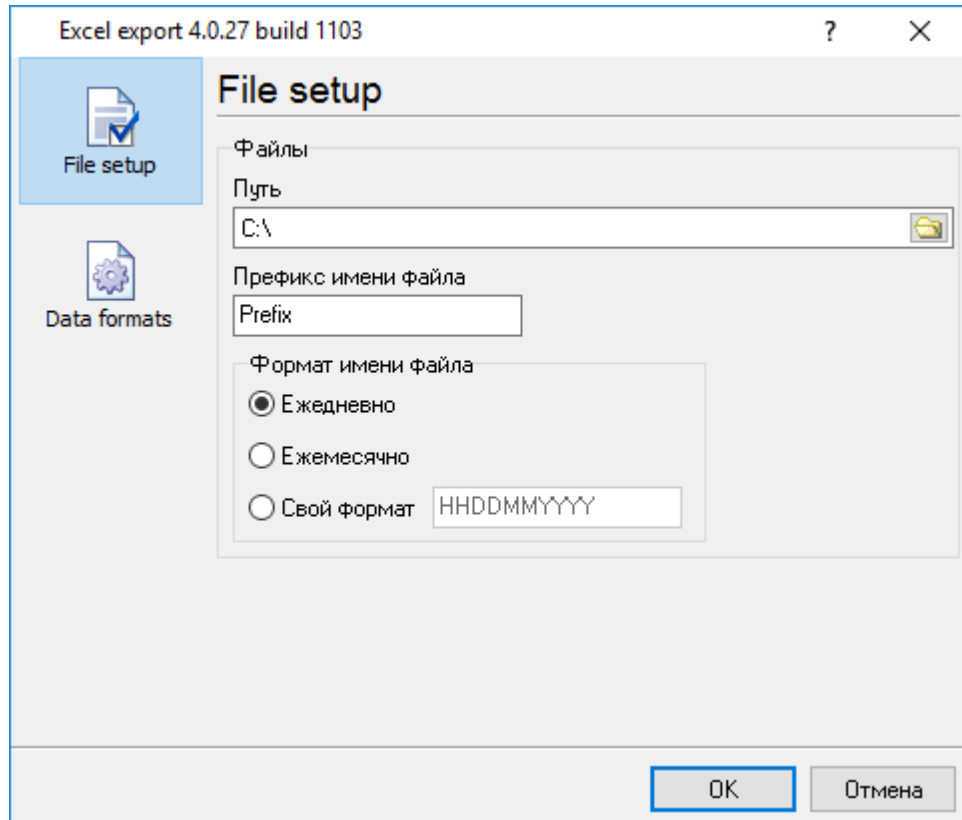
.1.

4

Plug-in -

Advanced Serial Data Logger

5



.1.

:"sample", "sampleYYYYMMDD.xls". 21, 2016
 "sample20160321.xls". (.xls)

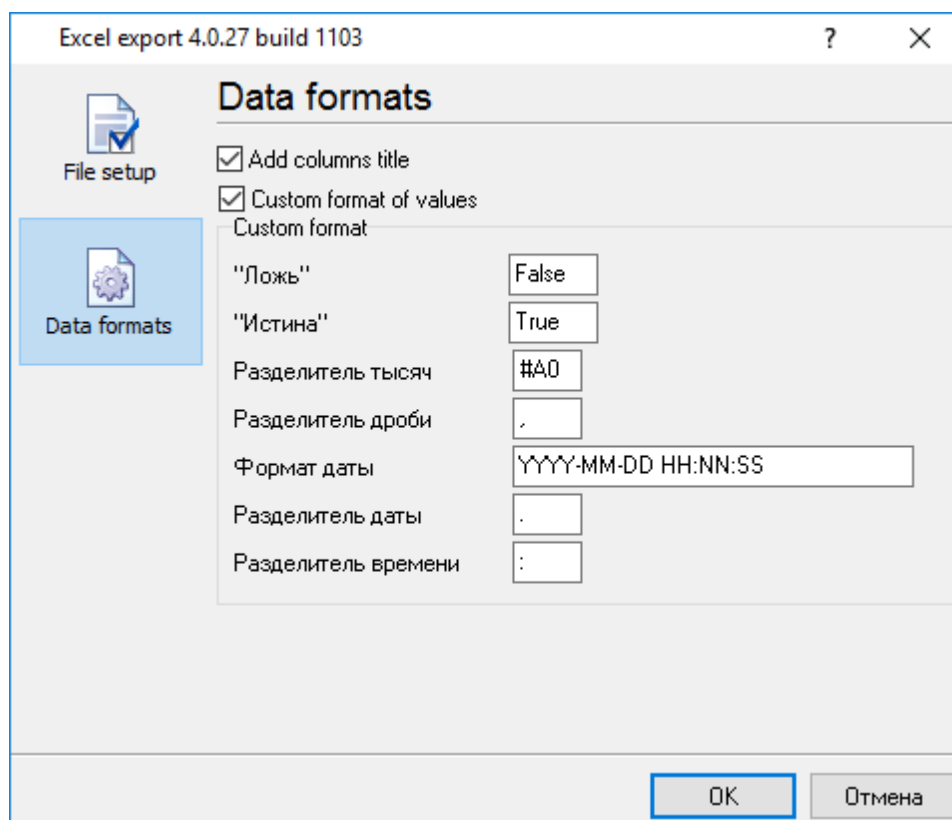
(, DDMMYYYY). "/, \, *, ?".

d - (1 - 31);
 dd - (01 - 31);
 ddd - (-)

dddd - (-)
 ;
 m - (1 - 12);
 mm - (01 - 12);
 mmm - (-)
 ;
 mmmm - (-)
 ;
 yy - (00 - 99);
 yyyy - (0000 - 9999);
 h - (0 - 23);
 hh - (00 - 23);
 n - (0 - 59);
 nn - (00 - 59);
 s - (0 - 59);
 ss - (00-59).

:
 "sample_log".

: HHDDMMYYYY. "sample_log_".



.2.

„ „ „ „ -
;
, ,
-
,

6

?

6.1

„ „ -
„Plugins“
,
:
() -

;%s [%s] -
,
(%s) -
,
%;s. (%s) -
%;s. (%s) -
(,).

support@aggsoft.ru

„%s“

