



Log Monitor & Export

<b>1</b>		<b>1</b>
1	O Log Monitor & Export .....	1
2	.....	2
<b>2</b>	,	<b>3</b>
1	.....	3
2	.....	4
3	.....	4
4	.....	5
<b>3</b>		<b>5</b>
1	.....	5
2	.....	5
<b>4</b>		<b>5</b>
1	.....	5
2	.....	7
3	.....	8
4	.....	9
5	.....	9
<b>5</b>		<b>10</b>
1	.....	10
	.....	10
	.....	12
	.....	14
	.....	16
2	.....	17
	.....	17
	.....	18
	.....	20
3	- .....	21
	- .....	21
	- .....	24
	.....	26
4	.....	27
	.....	27
	OPC .....	31
5	.....	35
	.....	35

Windows 2000

Windows Vista

6

?

44

1



- 
- 
- 
- 

: <http://www.aggsoft.ru/>  
 : <http://www.aggsoft.ru/log-monitor.htm>

## 1.2

**ASCII** - ASCII -  
 Windows  
 ASCII. ASCII \*.TXT ( README.TXT).  
**Binary File** - ASCII ( 0 255).  
**Bytes** ( ) - :0 1. 8  
**Bit** ( ) - ( )  
**Cable** ( ) -  
**Internet** ( ) - TCP/IP  
**PC** ( ) - Personal Computer ( )  
**Ports** ( ) -  
**Protocol** ( ) -

(Log file) -

( . log) —

## 2

### 2.1

Copyright © 1999-2019 AGG Software.  
All Rights Reserved

1. Log Monitor & Export -

2.

3. Log Monitor & Export ,

4.

5. Log Monitor & Export  
sales@aggsoft.ru

6. Log Monitor & Export ,

Log Monitor & Export

7. Log Monitor & Export

"AS IS".

8.



## 2.4

Log Monitor & Export	<a href="mailto:support@aggsoft.ru">support@aggsoft.ru</a>
	<a href="mailto:support@aggsoft.ru">support@aggsoft.ru</a>
	<a href="mailto:sales@aggsoft.ru">sales@aggsoft.ru</a>

## 3

### 3.1

- Windows 2000 SP 4 - Windows 10 ( x86 x64, ).

### 3.2

Log Monitor & Export.

Export" , Log Monitor & Export "\Programs Files\Log Monitor & Export" ,

Log Monitor & Export

## 4

### 4.1

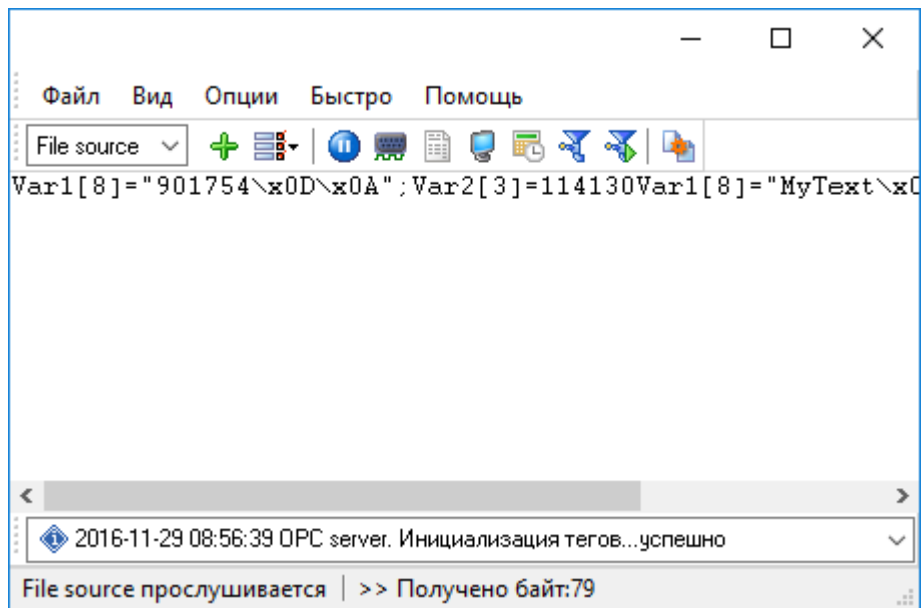
Log Monitor & Export

Log Monitor & Export " "

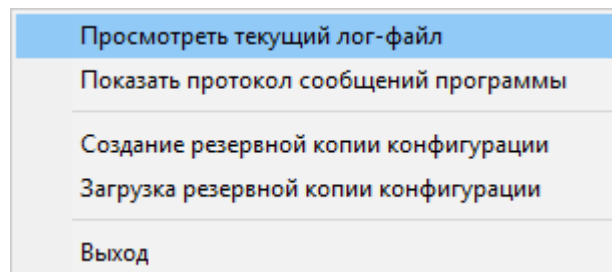


( . 1.1.1),

1.1.2)  (" ..."), " ("



. 1.1.1.



. 1.1.2.

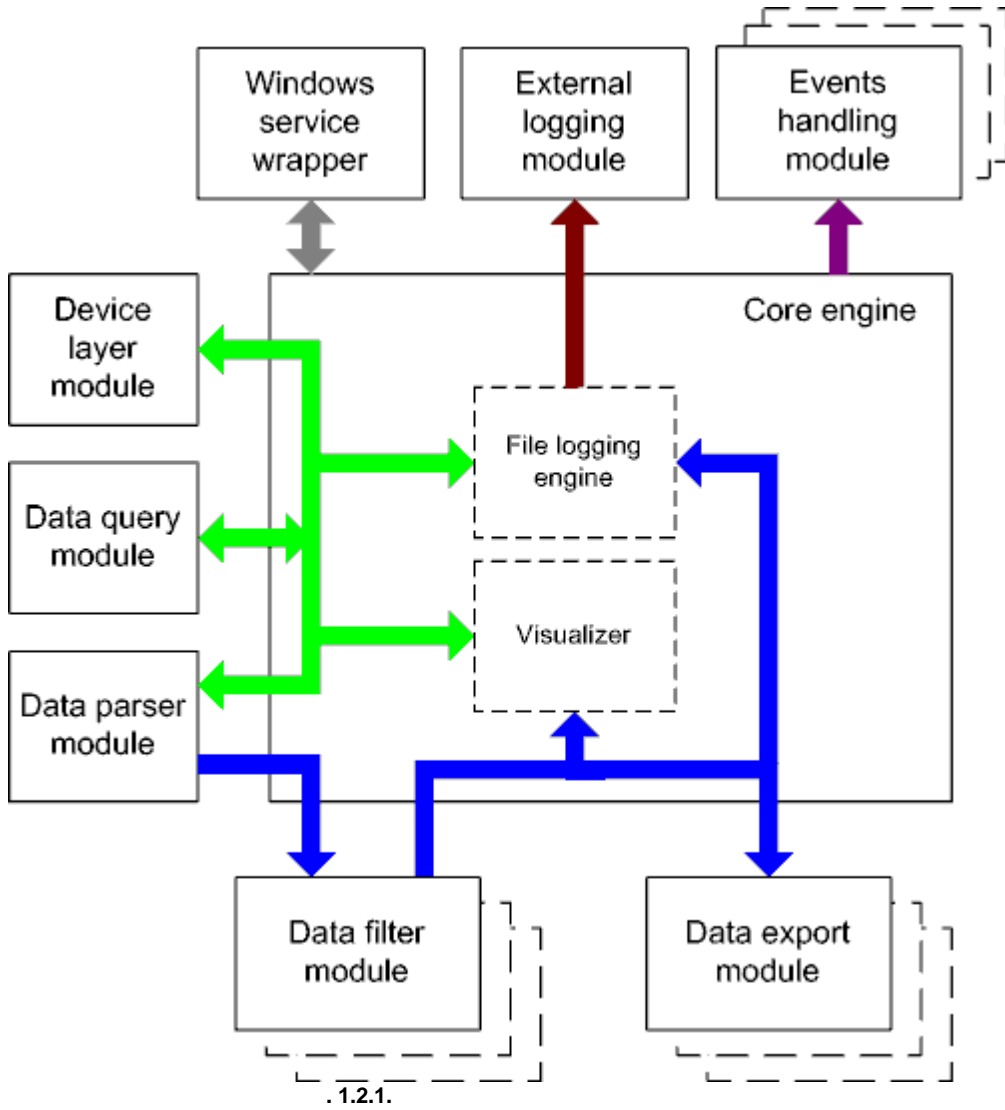
C:\. 

1-2-3-4

1.



### 4.3



- Core engine -
- Device layer module -
- Data query module -
- Data parser module -
- Data filter module -
- Data export module -
- Visualizer -
- File logging engine -
- Windows service wrapper -
- External logging module -
- Events handling module -

## 4.4

Windows.

## 4.5

1.

2.

1.

2.

regedit.exe

Windows x64

HKEY\_LOCAL\_MACHINE\SOFTWARE\Wow6432Node\AGG Software\Log Monitor & Export

Windows x32

HKEY\_LOCAL\_MACHINE\SOFTWARE\AGG Software\Log Monitor & Export

3.

Ctrl+S -  
Ctrl+D -

Ctrl+P -  
Ctrl+L -  
Ctrl+R -  
Ctrl+E -  
Ctrl+M -

Windows;

log- ;

;

4.

. : -

5.

INI

" "

6.

10

: -

# 5

## 5.1

### 5.1.1

( . log) —

( )  
( , )

( )

( )

email.

1. " " -

2. " " -

( " 14").

1. ;

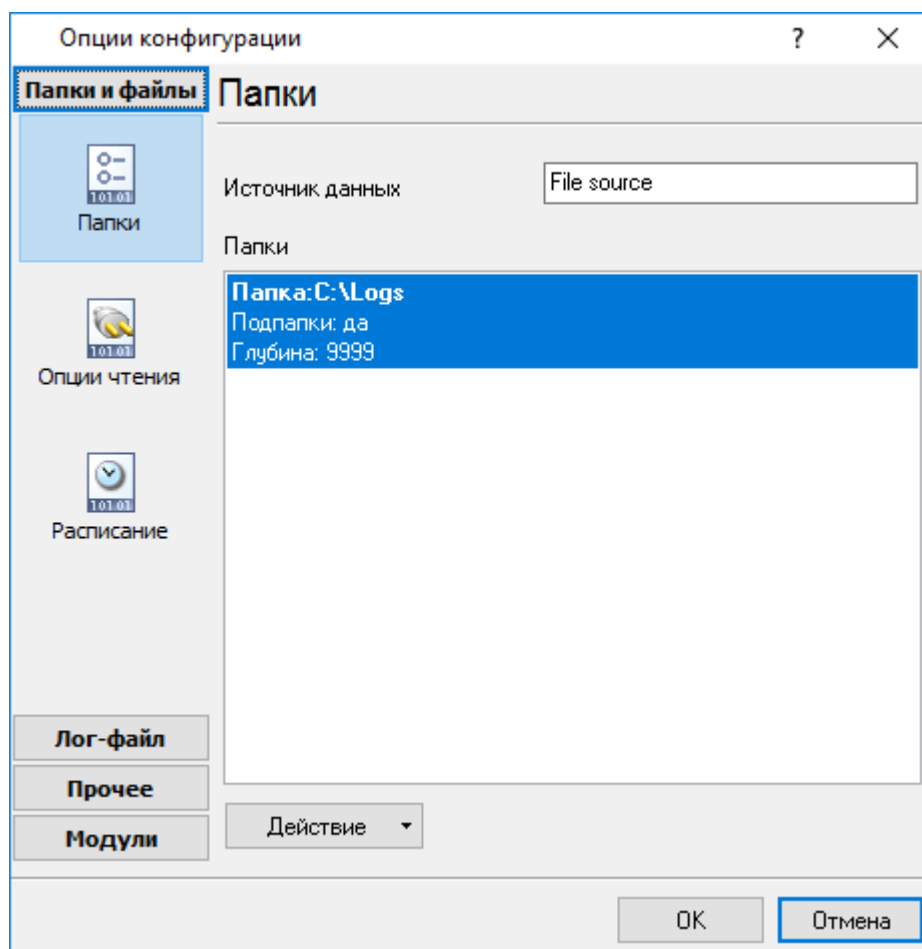
2. ;

3. .

".txt",

## 5.1.2

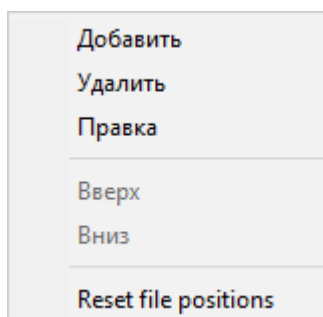
" " - ( .1).



.1.

- Data source #XXX, XXX -

" " ( .2).



. 2.

( . 3).

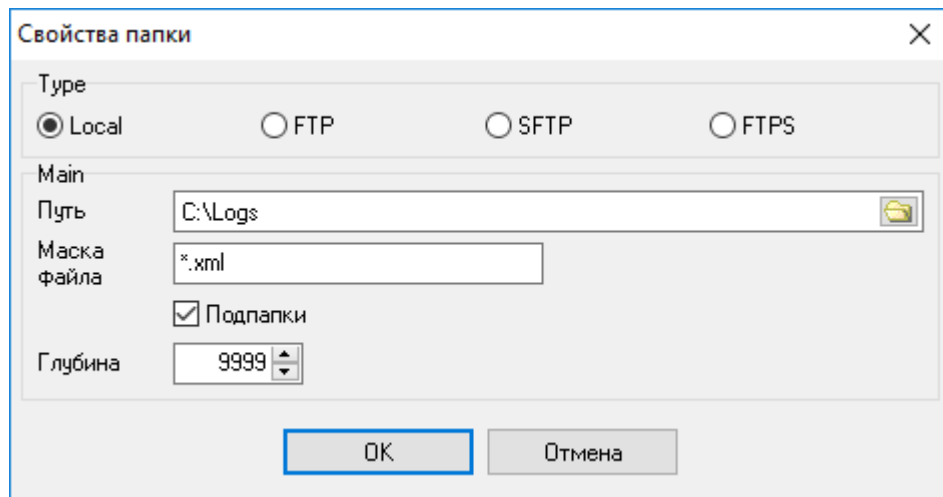
OK -

"Yes" ( )

"No" ( ) -

( . 3).

OK



. 3.

/

- 9999.

C:\Files\Data\Test -

C:\Files\Data\Test\Folder0 -

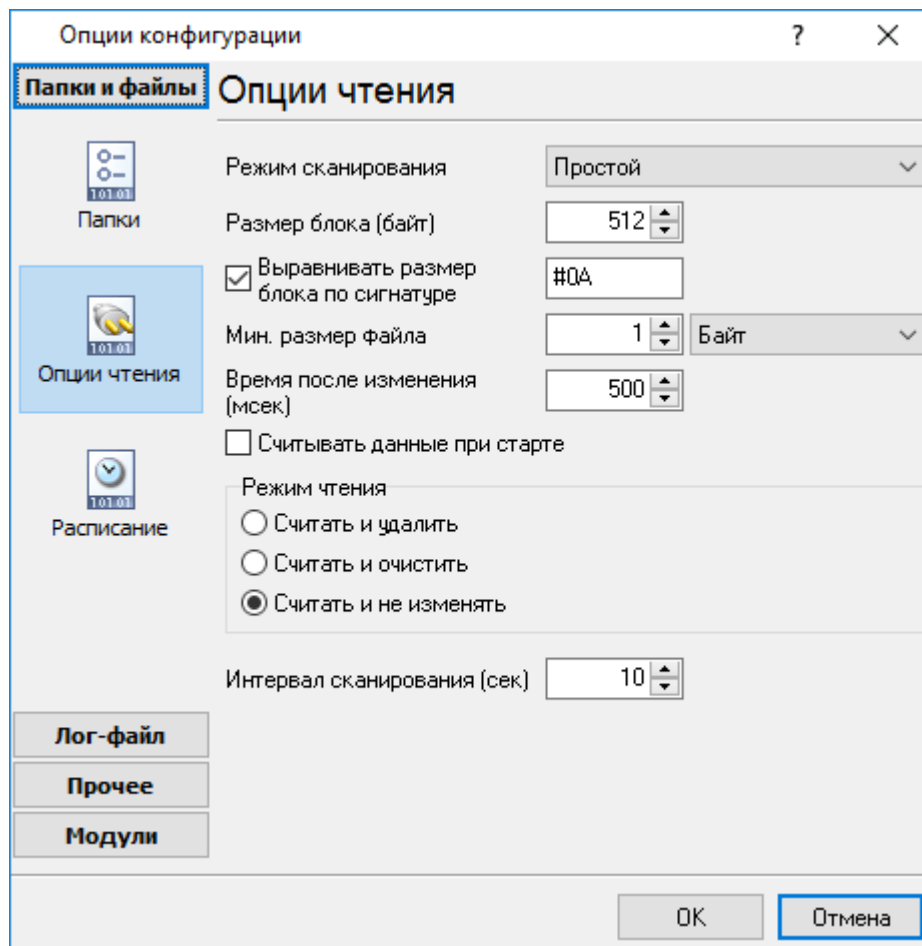
1

C:\Files\Data\Test\Folder0\Folder1 -

2



## 5.1.3

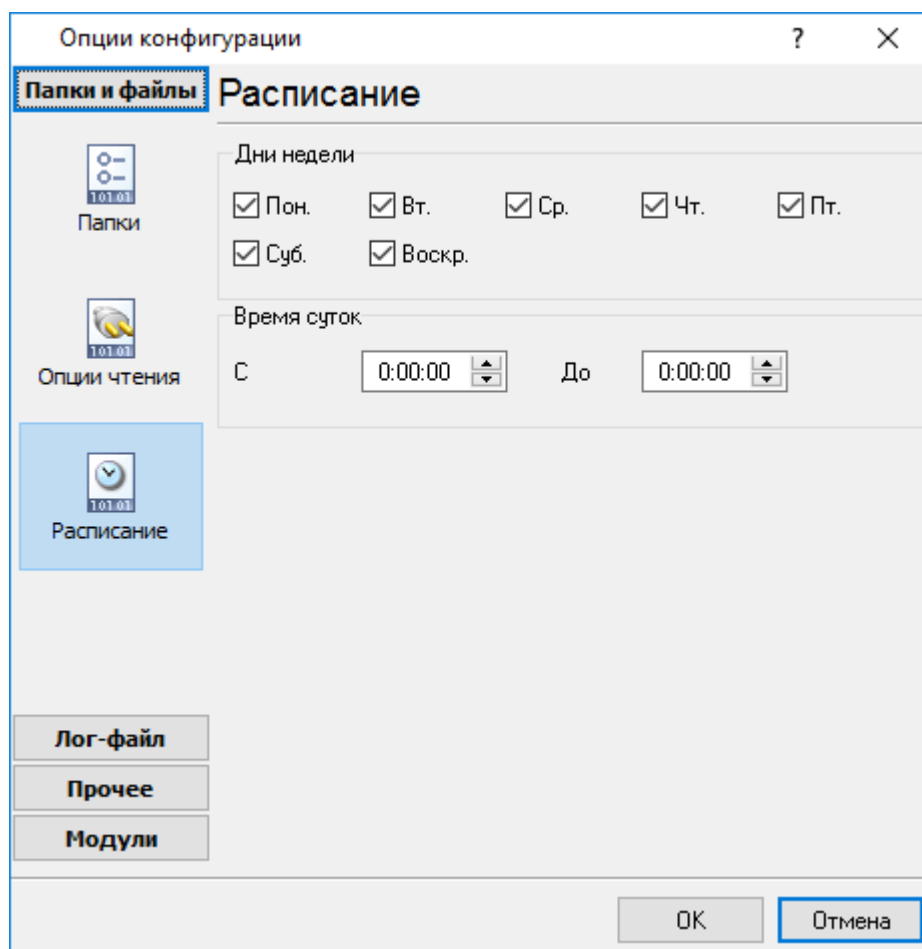


.1.

\*,.txt - :\*. -  
\*,.exe -  
-\*. -  
( )-  
- 512  
( ), ( ) ( ).  
- 1 ( ).  
( )-  
- 500  
" " " "  
( )-  
- 30

## 5.1.4

" ( .1). "



.1.

- 1.
- 2.

0:00:00-0:00:00,

## 5.2

## 5.2.1

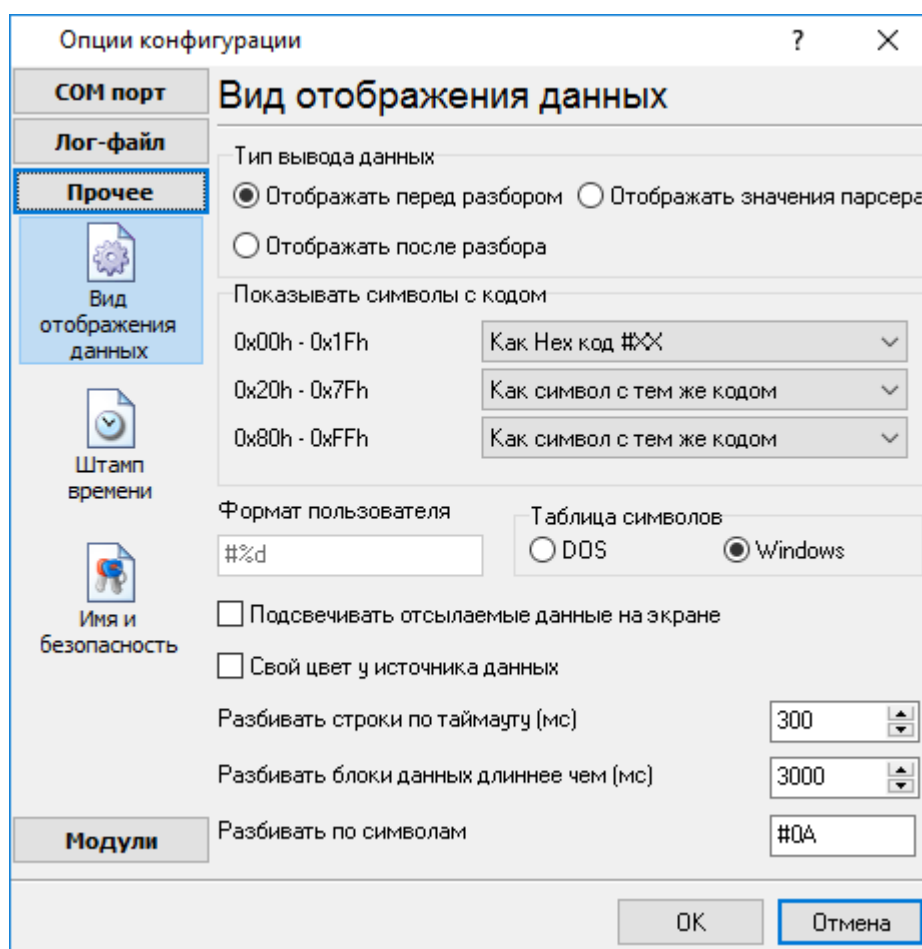
(. . . 1.1.1<sup>5</sup>)

2

(. . . 3.1.1):

1.

2.



. 3.1.1.

"

-

"

(. . . 3.1.1)

:

Hex-

%d

, %x -

(OEM).

: Windows DOS

0,

0,

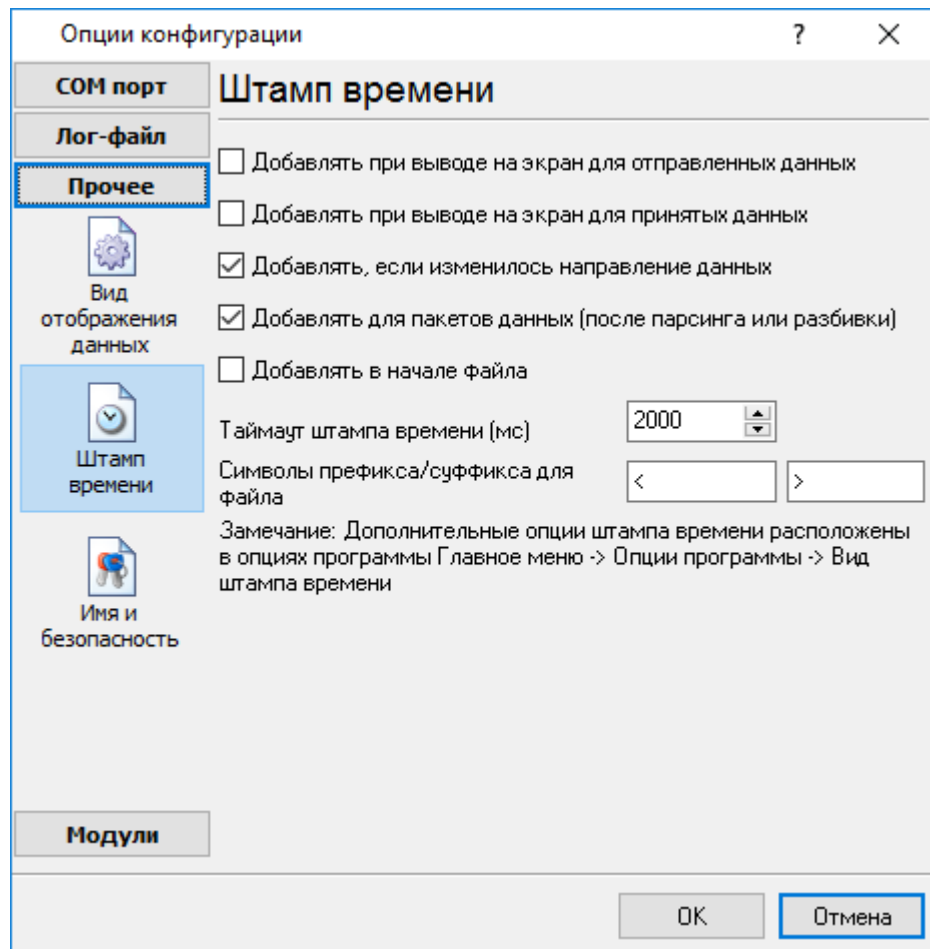
. 3.1.1

### 5.2.2

( . 3.2.1)

( )

37



. 3.2.1.

:>#0D#0A

### 5.2.3

( . 3.3.1)

:

-

.

-

,

"

"

43

"

/

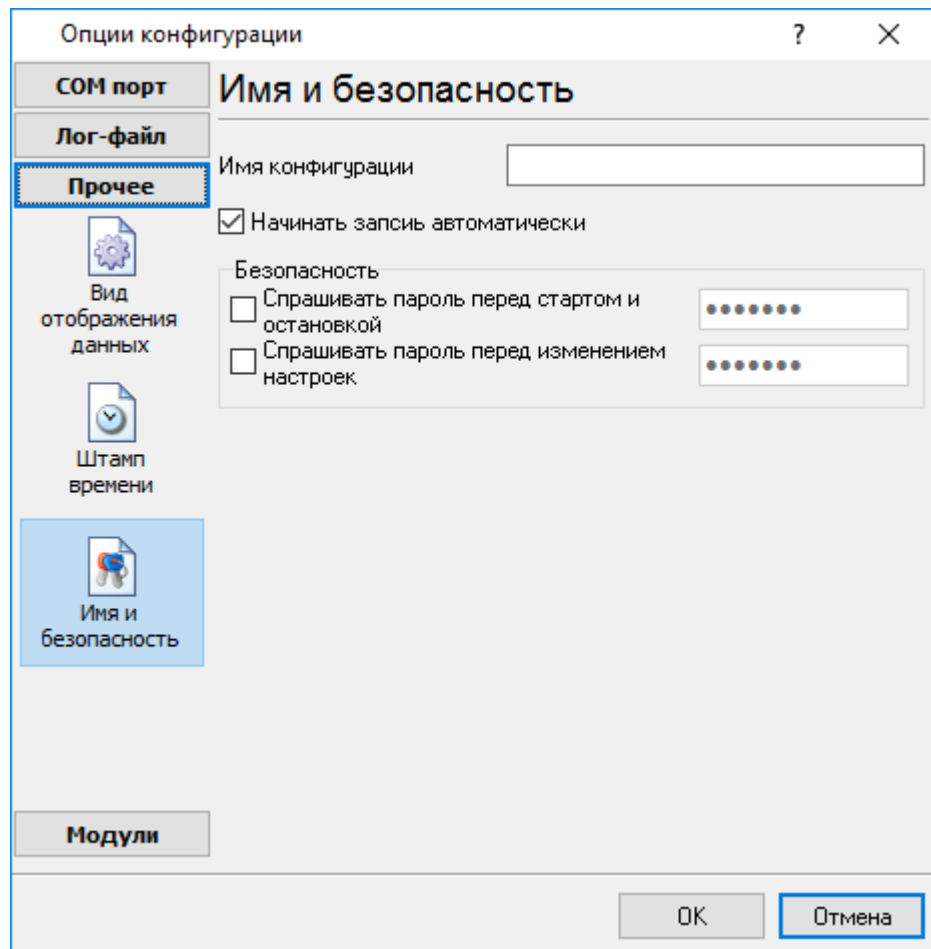
"

-

,

-

,



. 3.3.1.

## 5.3

-

## 5.3.1

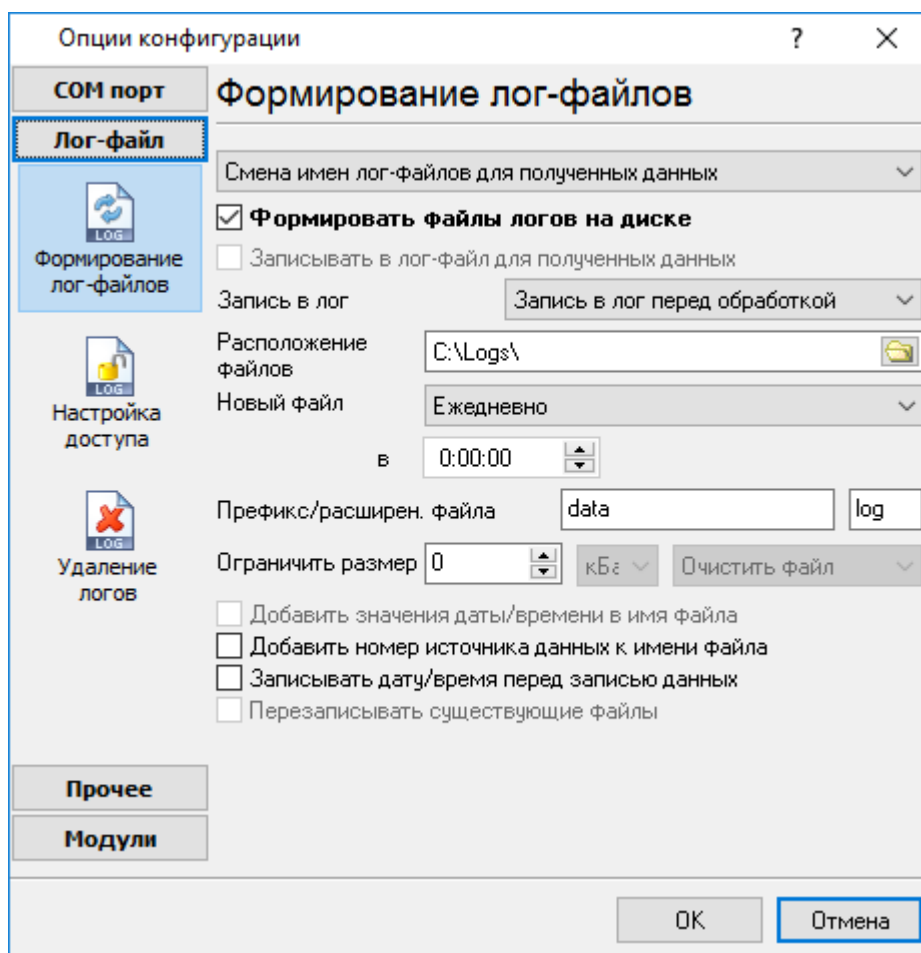
-

-

( . 4.1.1).

- ( ).





. 4.1.1.

Log Monitor & Export

"sample",

"log",

```

"sampleYYYYMMDD.log". 21-
2003 - "sample20030321.log".
.
( ).
, , , .
" " :
1. - , .
DDMMYYYY, DD - , MM -
YYYY - ;
2. - . MMYYYY;
3. - YYYYMMDD;
4. -
sample00000001.log. -
5. ;
6. - ; WWYYYY, WW -
, YYYY -
7. ;
8. - ; HHDDMMYYYY;
9. - -
, .
:
d - , (1 - 31);
dd - , (01 - 31);
ddd - ( - ) ,
;
dddd - ( - )
, ;
m - , (1 - 12);
mm - , (01 - 12);
mmm - ( - ) ,
;
mmmm - ( - ) ,
;
yy - (00 - 99);
yyyy - (0000 - 9999);

```

```

h - , (0 - 23);
hh - , (00 - 23);
n - , (0 - 59);
nn - , (00 - 59);
s - , (0 - 59);
ss - , (00-59).

```

```

: "sample_log", "txt".
: = sample_log_, = txt ( !).
HHDDMMYYYY.

```

4 7 /

sample20030321.log.

/

, COM1-

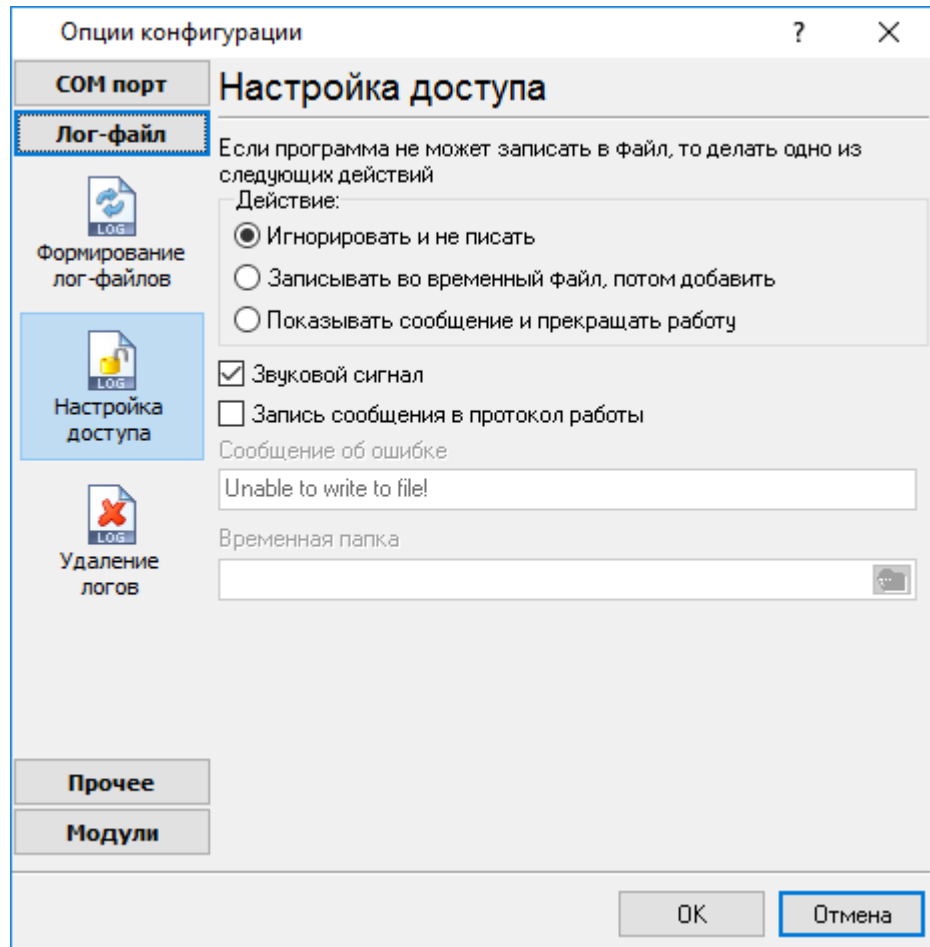
4 7.

- 1. "
- 2. !
- 3. ( ) -
- 4. ( ).

### 5.3.2

Office ( , Microsoft Word),  
& Export

Microsoft  
Log Monitor



. 4.2.1.

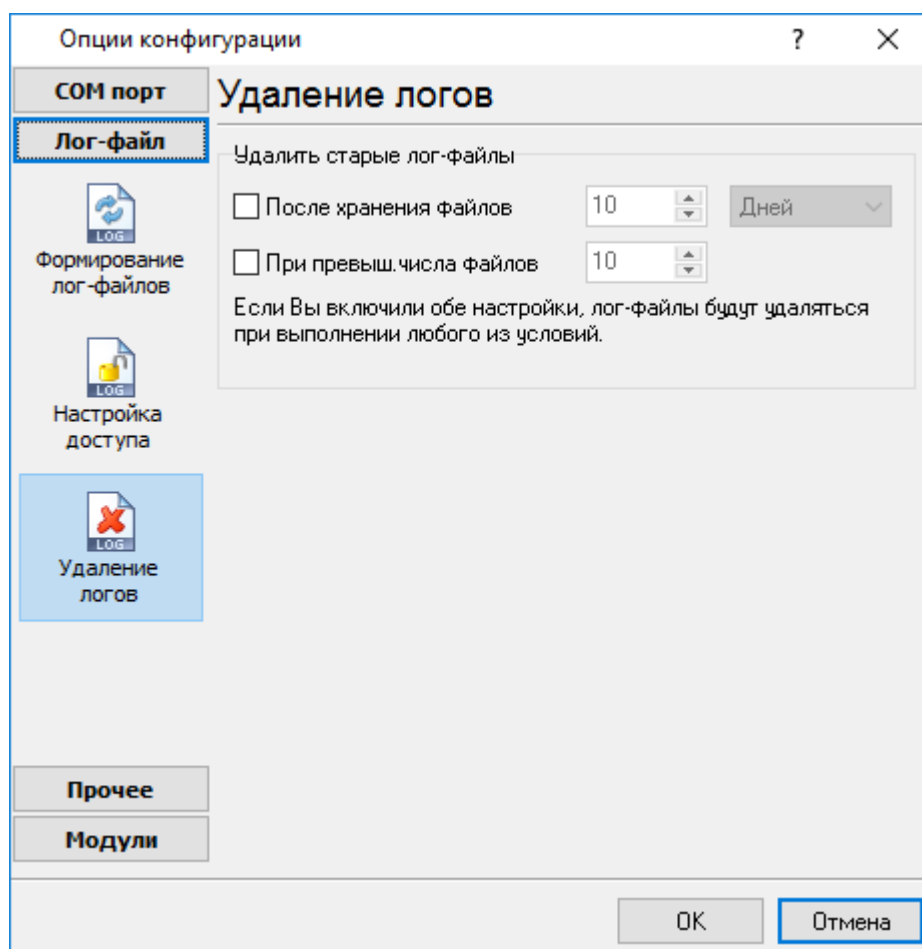
Log Monitor & Export

( . 4.2.1),

- 
- 
-

## 5.3.3

(рис. 4.3.1).



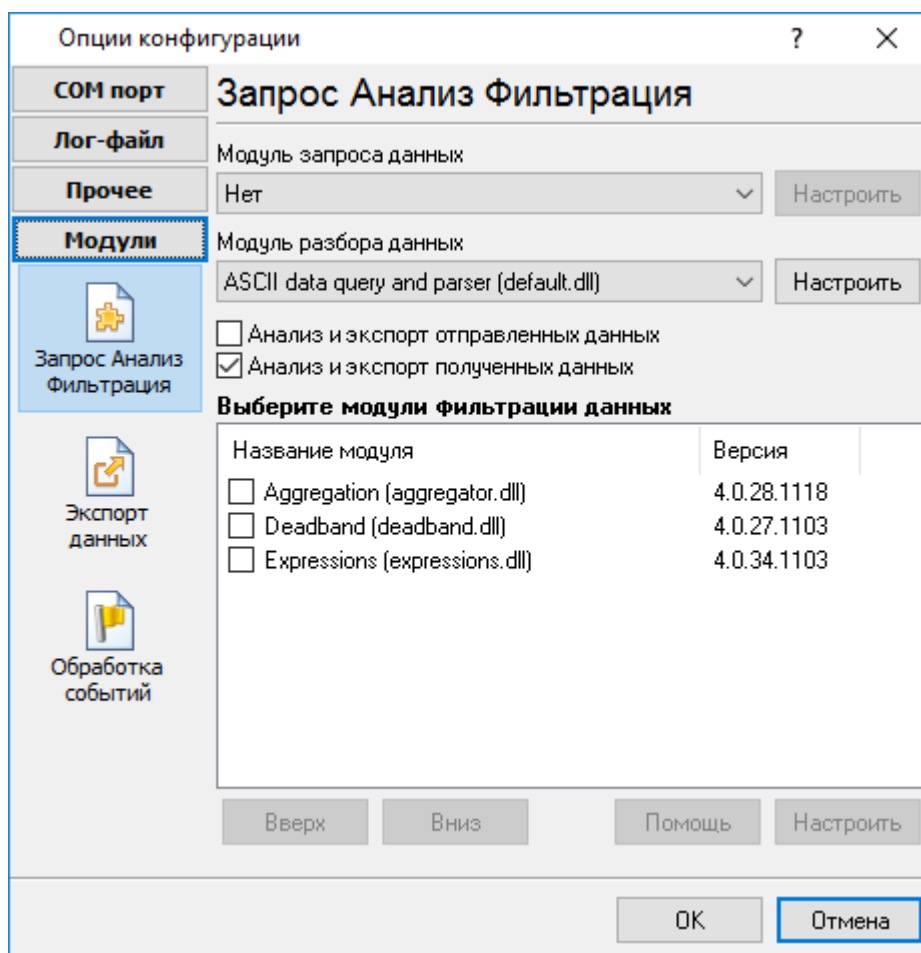
. 4.3.1.

## 5.4

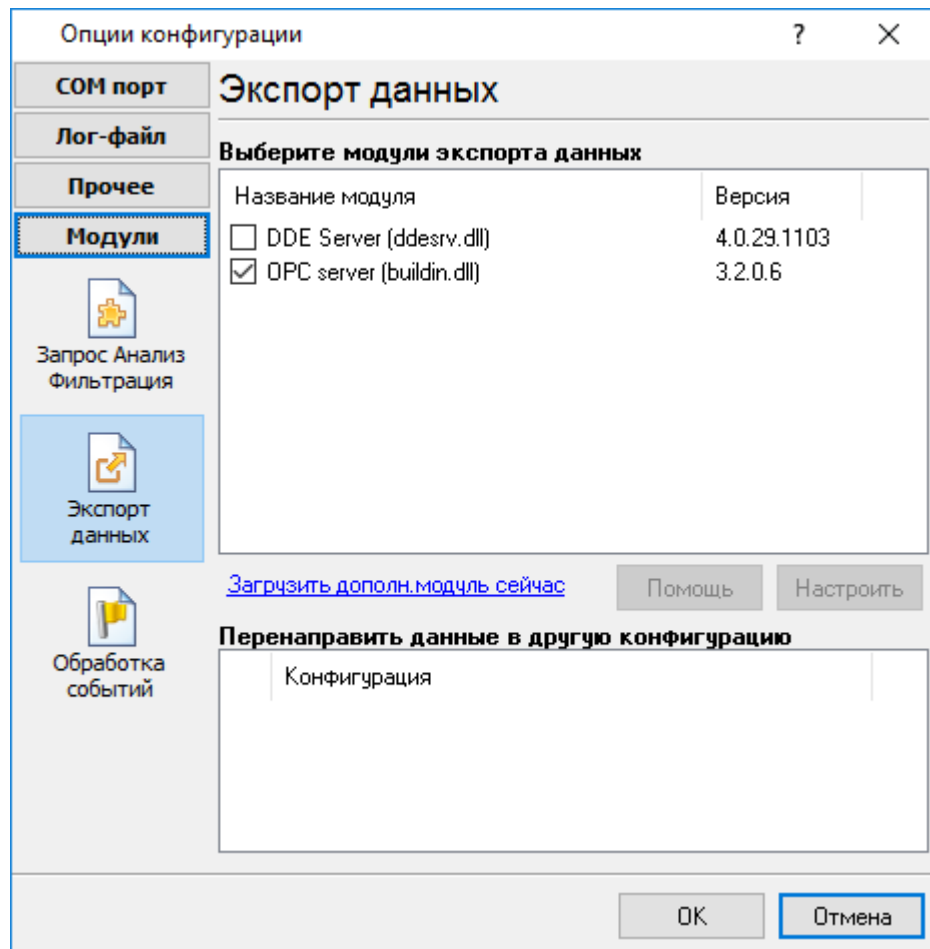
### 5.4.1

Log Monitor & Export :

- ( , , ) - ( )
- - ;
- - ;
- , Excel ;
- ( . 5.1.3) - Log Monitor & Export. , " - " "

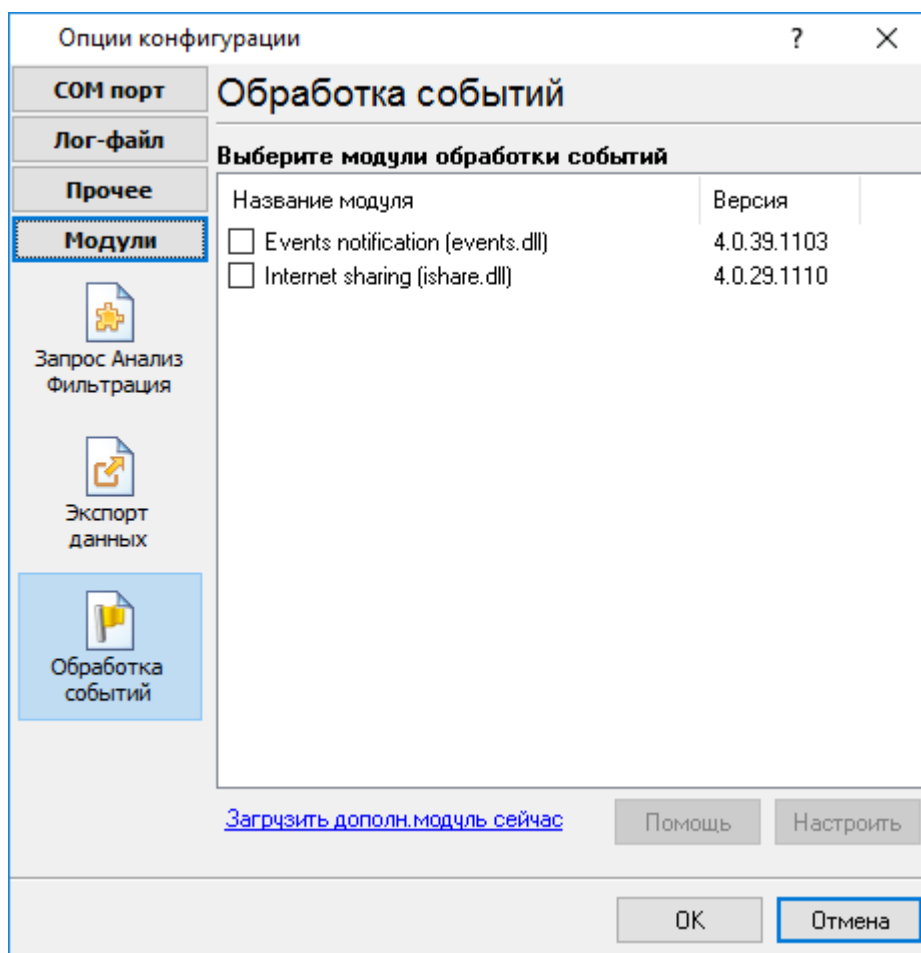


. 5.1.1.



. 5.1.2.





. 5.1.3.

"OK".

## 5.4.2 OPC

Log Monitor &amp; Export

OPC.

OPC

Log Monitor &amp; Export

( . 5.2.1).

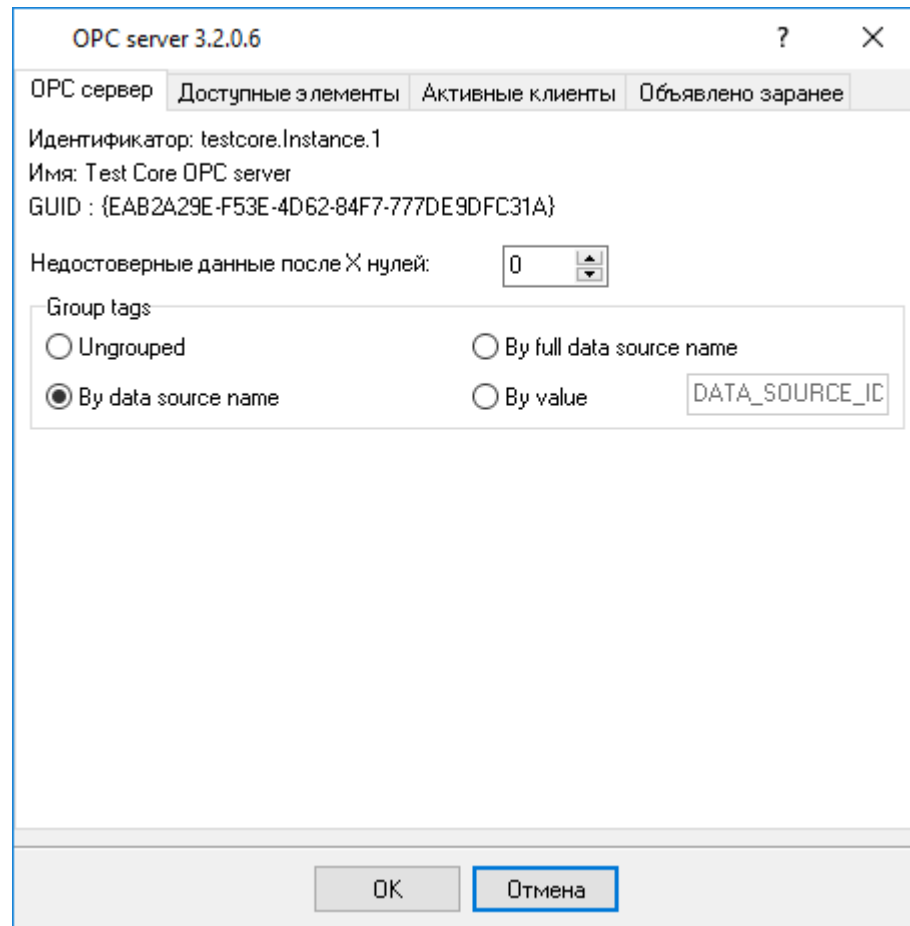
OPC Core Components Redistributable

OPC

[www.opcfoundation.org](http://www.opcfoundation.org) (

OPC

OPC



. 5.2.1.

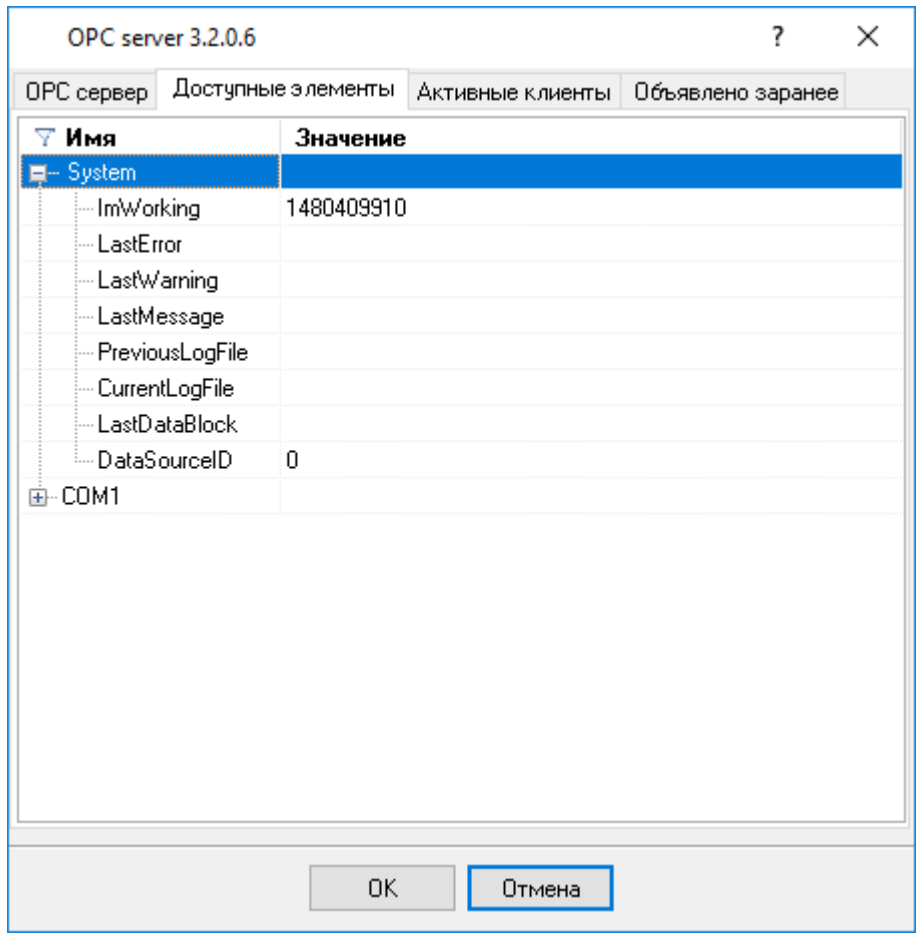
OPC

Log Monitor &amp; Export,

OPC

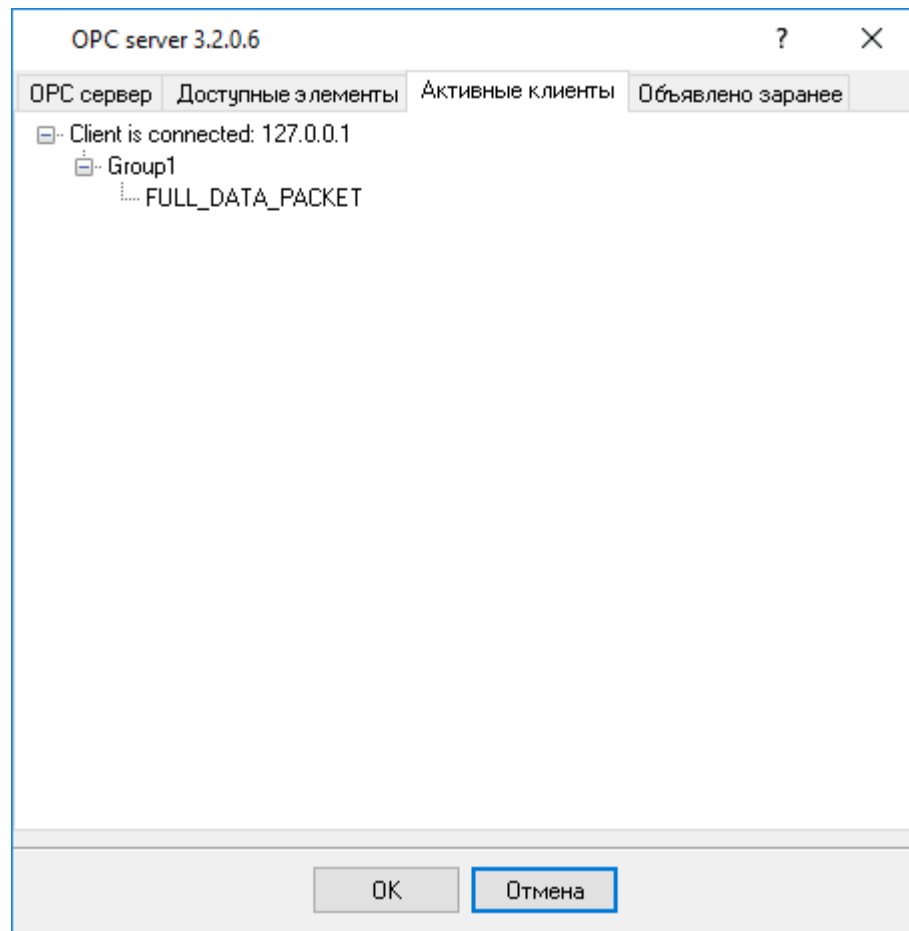
( .2).

OPC



. 5.2.2.

OPC



. 5.2.3.

Log Monitor &amp; Export

"

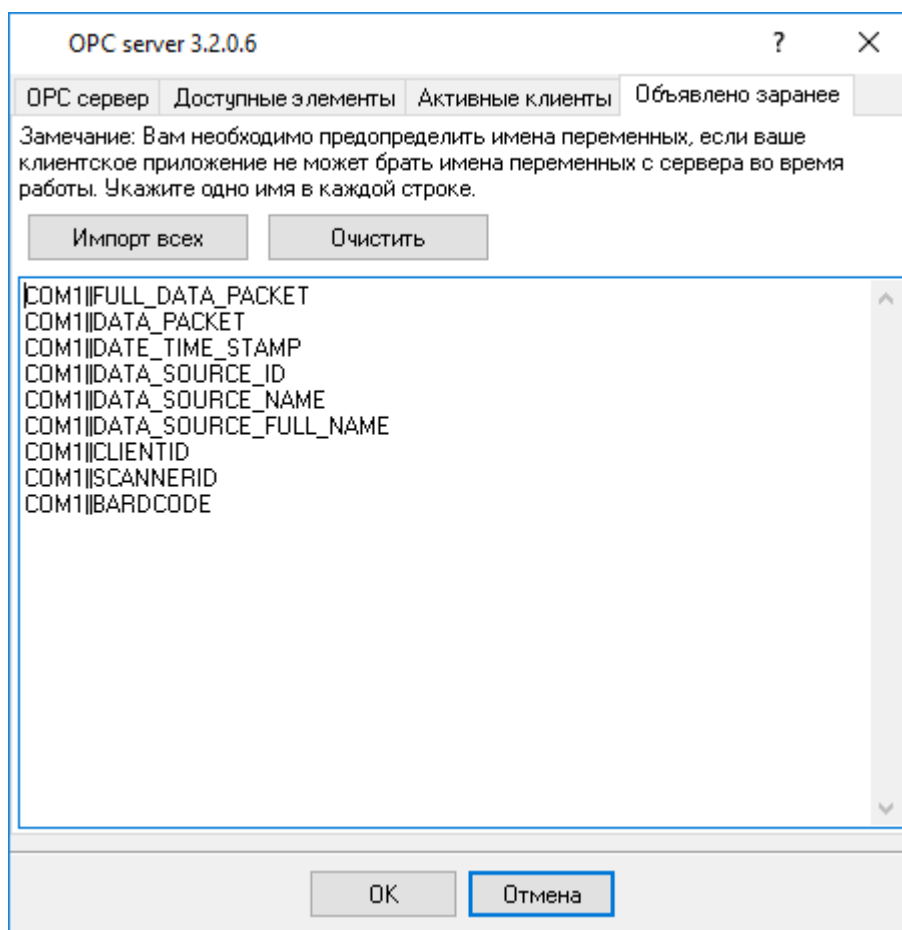
". Log Monitor &amp; Export

OPC

( .4).

OPC

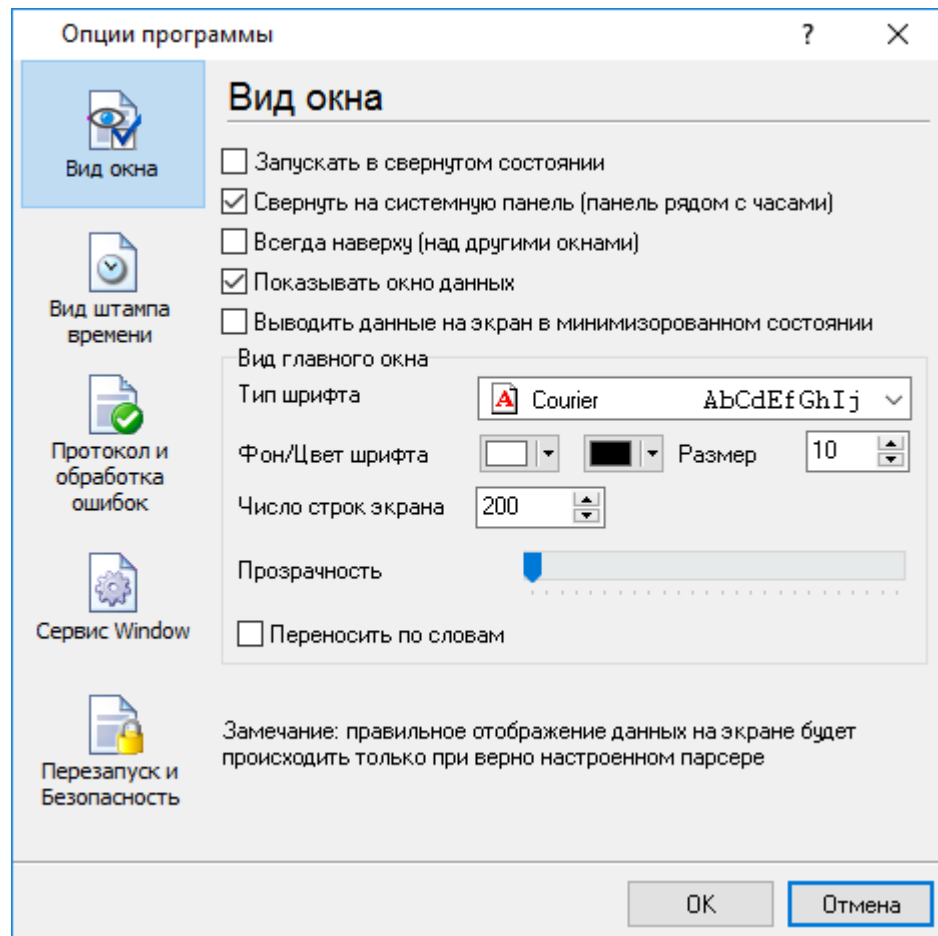
OPC



. 5.2.4.

## 5.5

## 5.5.1



. 6.1.1.

" ( . 6.1.1) :

- Log Monitor & Export

( . 6.1.2) ;



. 6.1.2.

-

( . 6.1.2) -

Log Monitor & Export

;

;

-

/

;

);

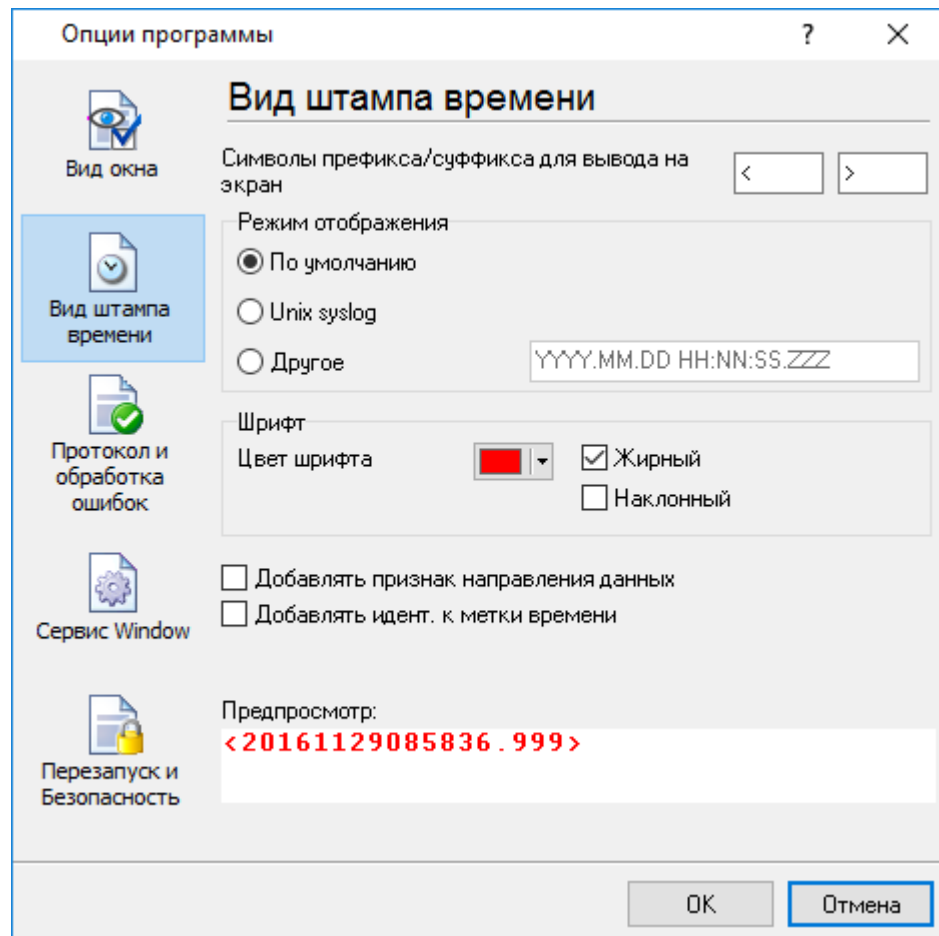
( , ,

- Windows 2000

;

## 5.5.2

( . 6.2.1)



. 6.2.1.

18

TX

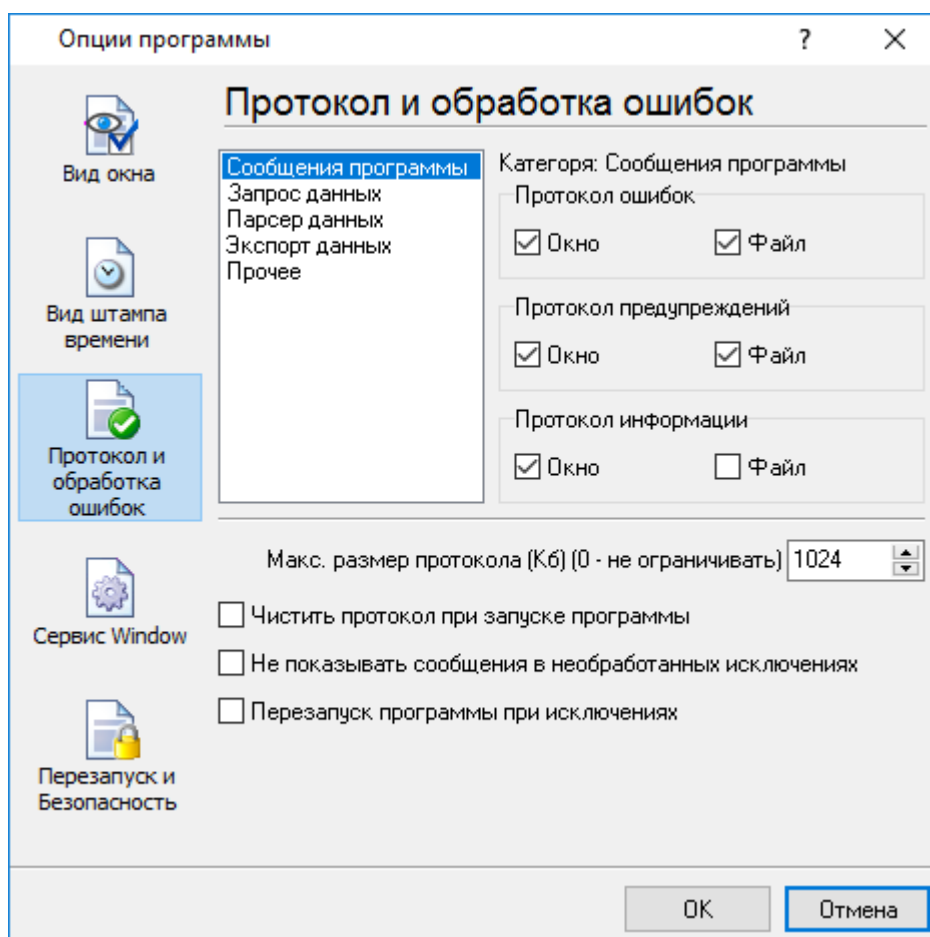
RX

, COM1.



## 5.5.3

.log.



. 6.3.1.

Log Monitor & Export

3-

:

- - ;
- - ;
- - ;

:

- ; - , ' ,
- - , ;
- - , ;
- - , ;

Monitor & Export , Log

**5.5.4**  
**5.5.4.1**

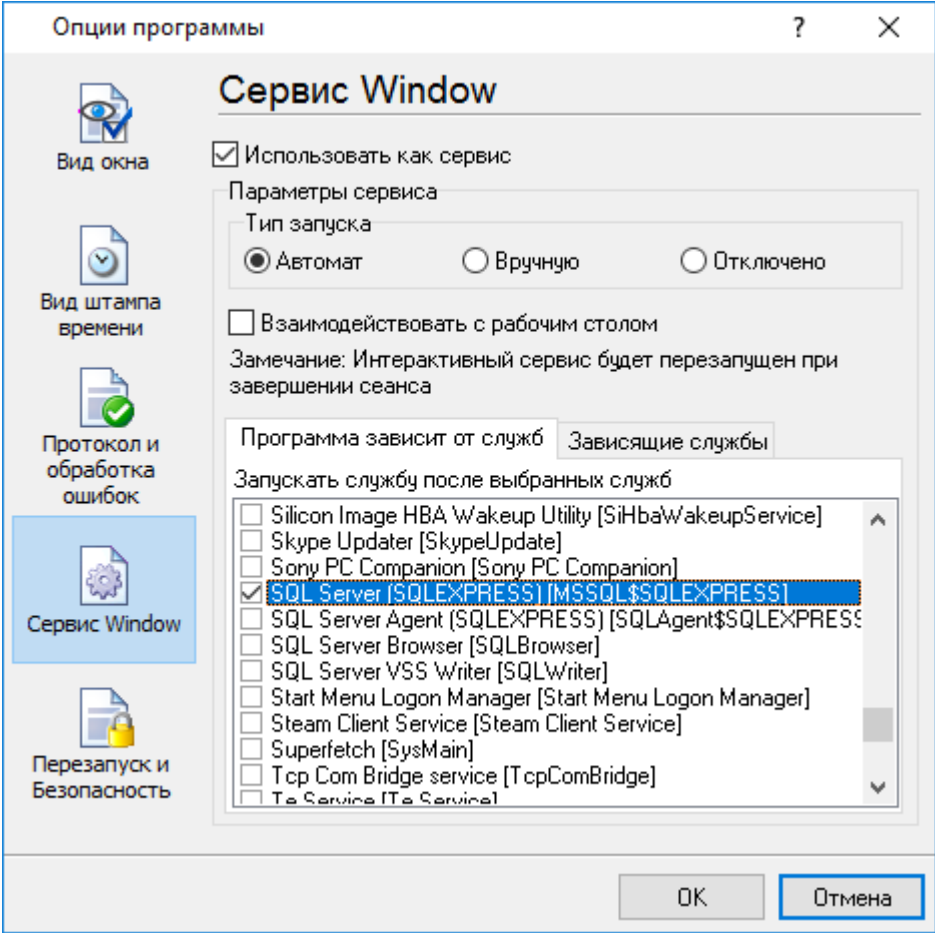
**Windows 2000**

( ) Windows :

- 2000 ); ( ' Windows
- - ( );
- ;
- )

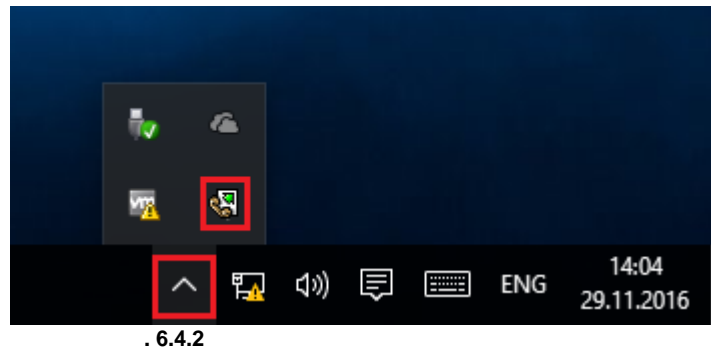
(elevated) Windows Vista

" " " Windows" ( . 6.4.1).



. 6.4.1.

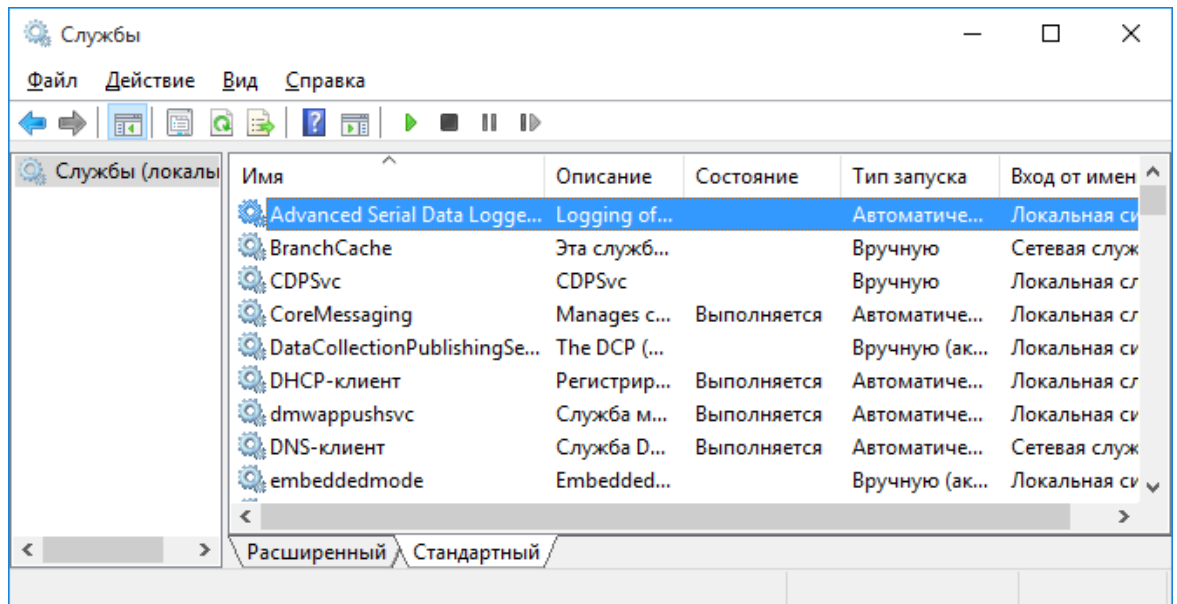
1. - Windows
  2. - ; " " ;
  3. - .
- " .  
 ( . 6.4.2).  
 ", . . Windows



. 6.4.2

Log Monitor & Export, " ( . 6.4.1)

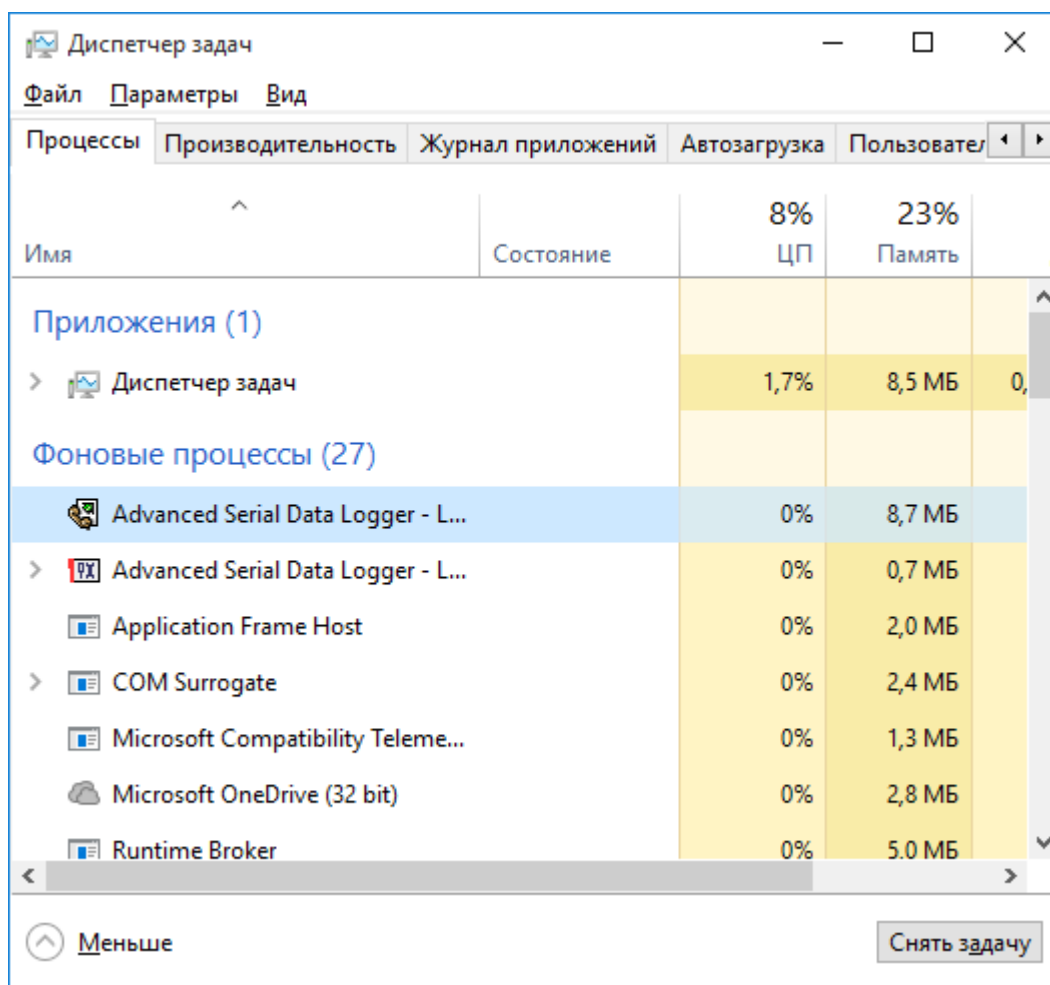
" " ( . 6.4.3).



. 6.4.3.

( Windows 2000)

logmonitor.exe ( . 6.4.4).  
 2 - logmonitorsrv.exe  
 Log Monitor & Export  
 Log Monitor & Export,  
 svany.exe



. 6.4.4.

logmonitorsrv.exe

- /? - ;
- /I - ;
- /A - ;
- /D - ;
- /R -

## 5.5.4.2

## Windows Vista

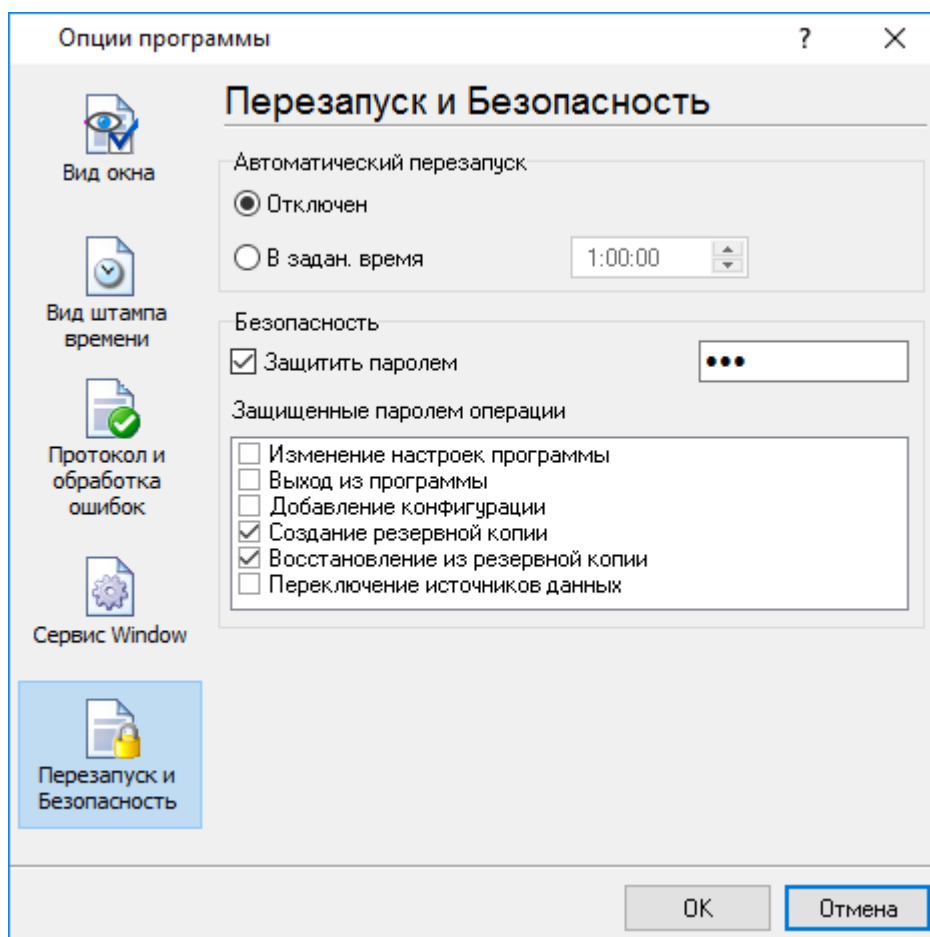
Windows Vista

Windows.

- : Interactive Services Detection
  - : UIODetect
  - : UIODetect.exe
  - :
  - : %windir%\system32\UIODetect.exe
  - :
- \* Home Basic:  
\* Home Premium:  
\* Business:  
\* Enterprise:  
\* Ultimate:

## 5.5.5

( . 6.5.1).



. 6.5.1.

" "

6

?

6.1

SoftIce

[support@aggsoft.ru](mailto:support@aggsoft.ru)