



"Direct Excel Connection"

1		1
2		2
3	Direct Excel	
	Connection	2
4		3
5	Microsoft Excel	4
6		9
7		11

1

"Direct Excel Connection"

Microsoft Excel.

DDE ODBC.

Excel,

Microsoft Excel

FIFO (First In, First Out),

-
-
-
-

(workbook),

Microsoft Excel

-
-

Microsoft Excel;

-
-

!

2

Direct Excel Connection :

: Windows 2000 SP4

32-x 64-x

5 MB

(),

Advanced Serial Data Logger.

3

Direct Excel Connection

- 1. (, Advanced Serial Data Logger), ;
- 2. ;
- 3. ,

Windows;

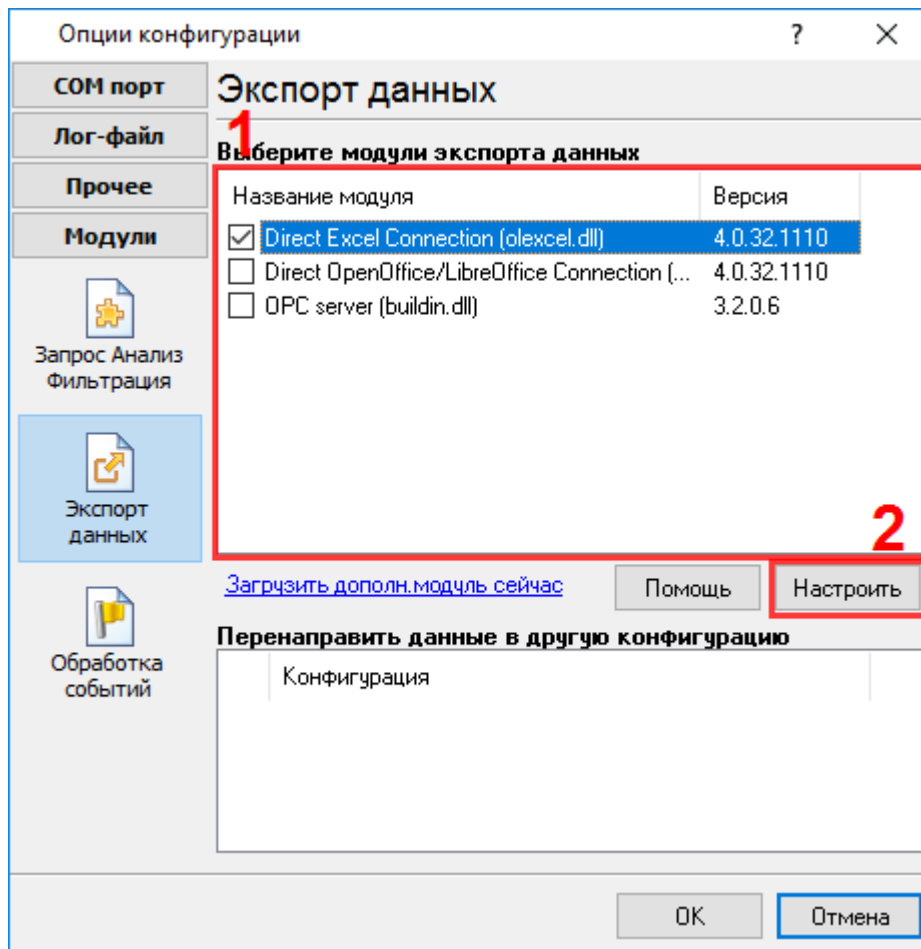
- 4. " " ;
- 5. " "

. 1-2.

" "

" "

" "



.1.

4

Plug-in -

Advanced Serial Data Logger

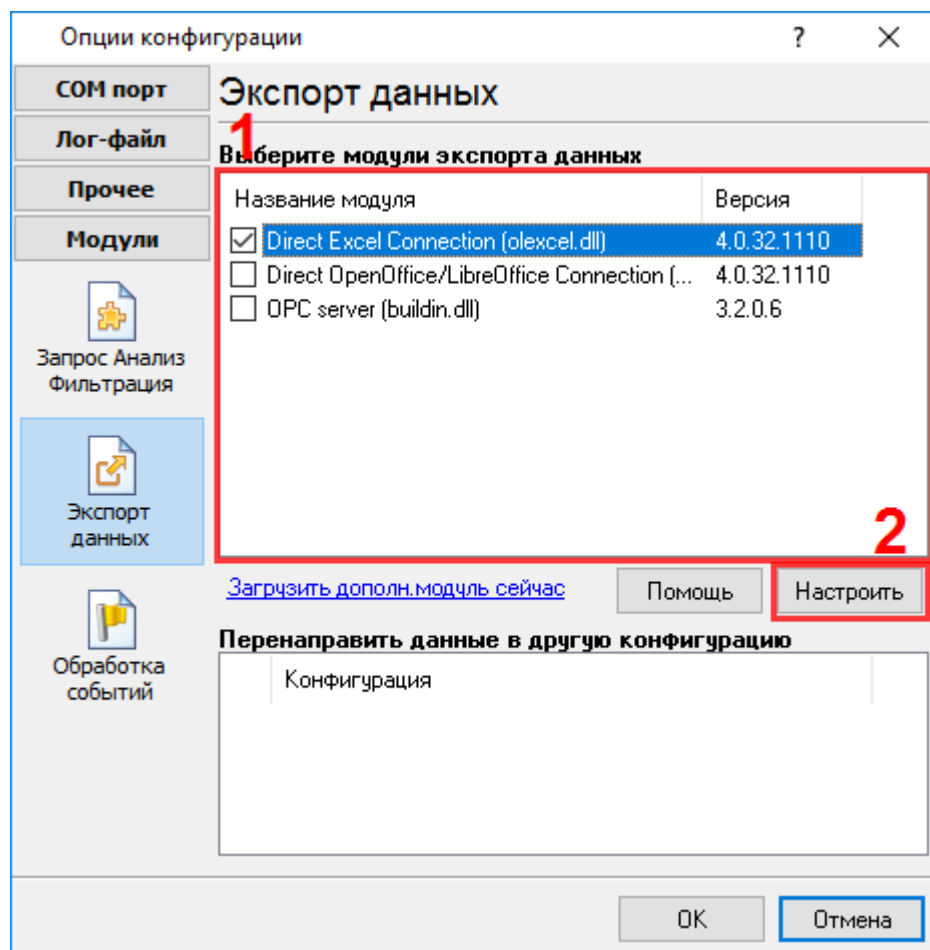
5

Microsoft Excel

Microsoft Excel.
Microsoft

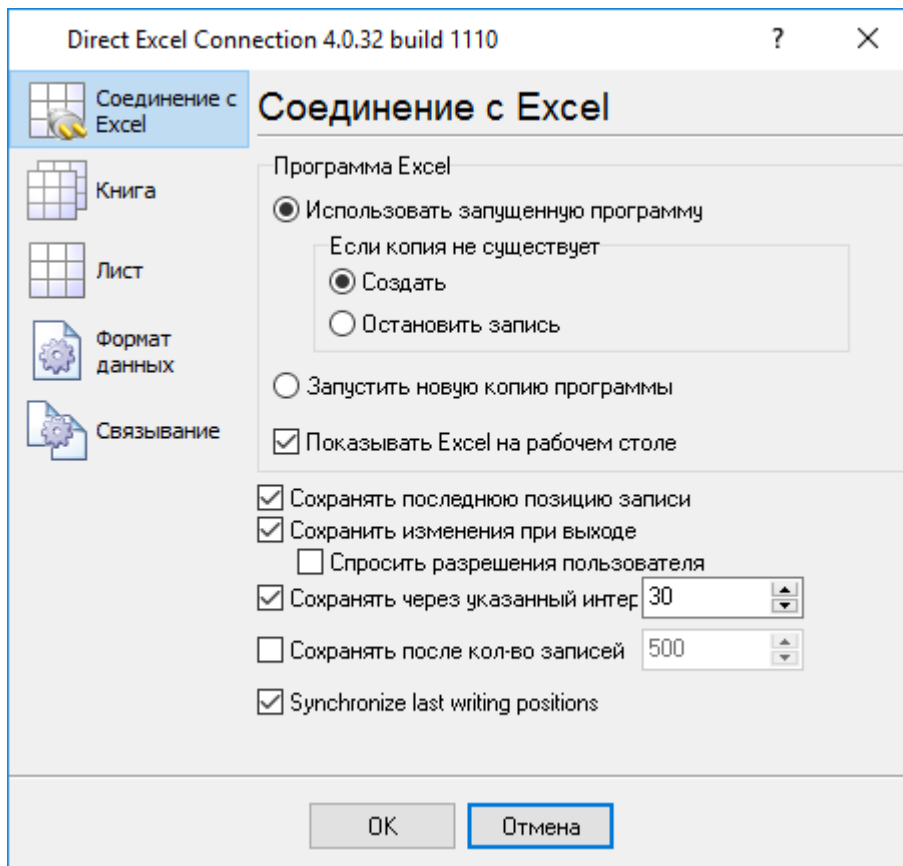
Excel, (worksheet), (workbook),

1. Data Logger); (, Advanced Serial
2. " - ";
3. "Direct Excel Connection" (. 1).



.1

4. " ";
5. " (.2).



.2

Microsoft Excel

Microsoft Excel

1.

Excel.

(instance) Microsoft

Microsoft Excel.

2.

Microsoft Excel ()

Microsoft Excel (),

Microsoft Excel.

Microsoft Excel.

Microsoft Excel.

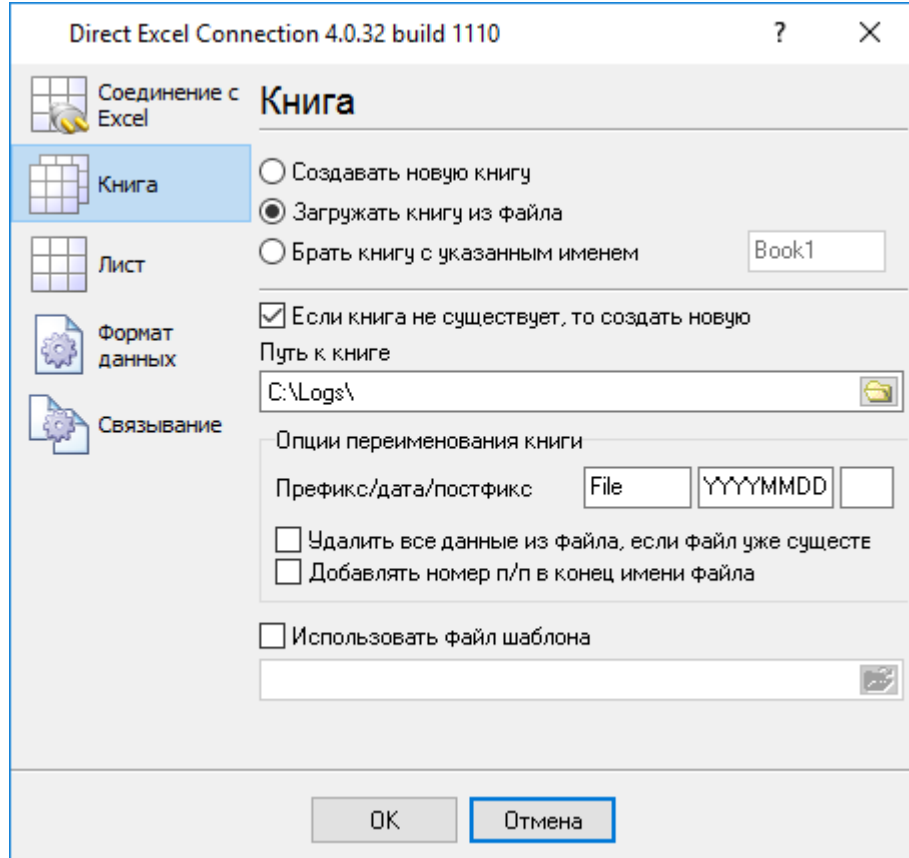
Microsoft Excel,

Excel

Microsoft Excel

Microsoft Excel

Microsoft Excel,
(workbook)
(worksheet). " " (.3).



.3

1.

Microsoft Excel.

2.

a.

- b. ;
- c. ;
- d. ,

3. - Microsoft Excel.

4. -

• " "

• - ; /

(.).

• - ;

• , - ;

• / - ;

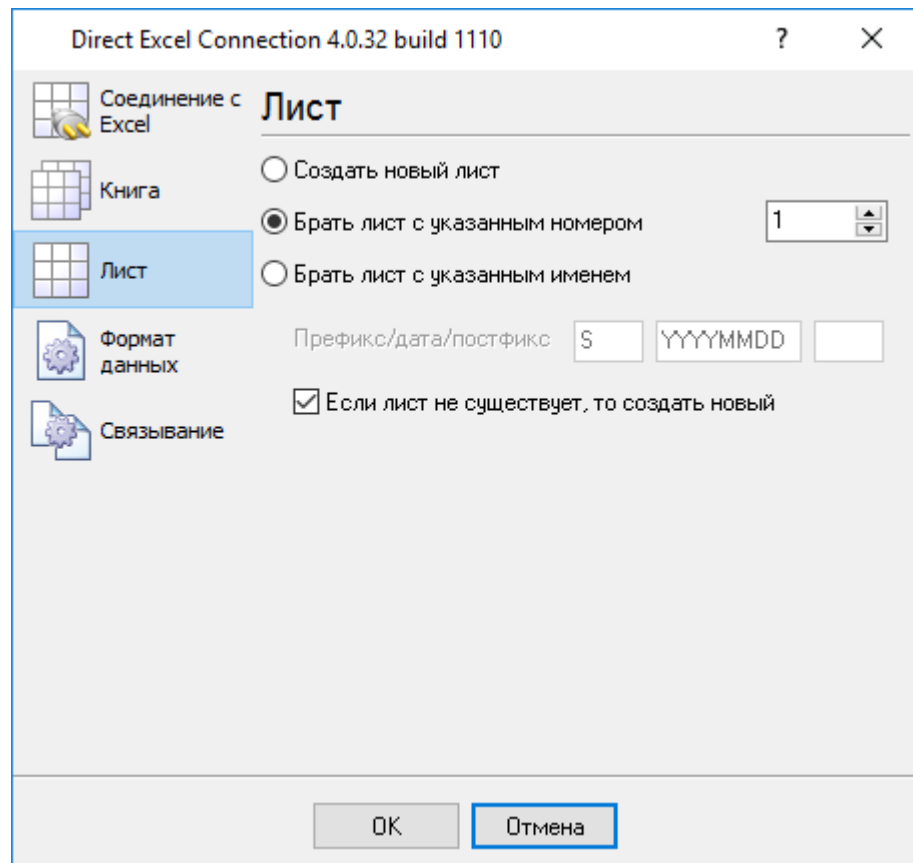
• " "

Microsoft Excel

Microsoft Excel

(.4). :

1. "
 2. " Microsoft Excel,
 3.
 - - ;
 - - /
 - - () ;
 - - " ;
- Microsoft Excel



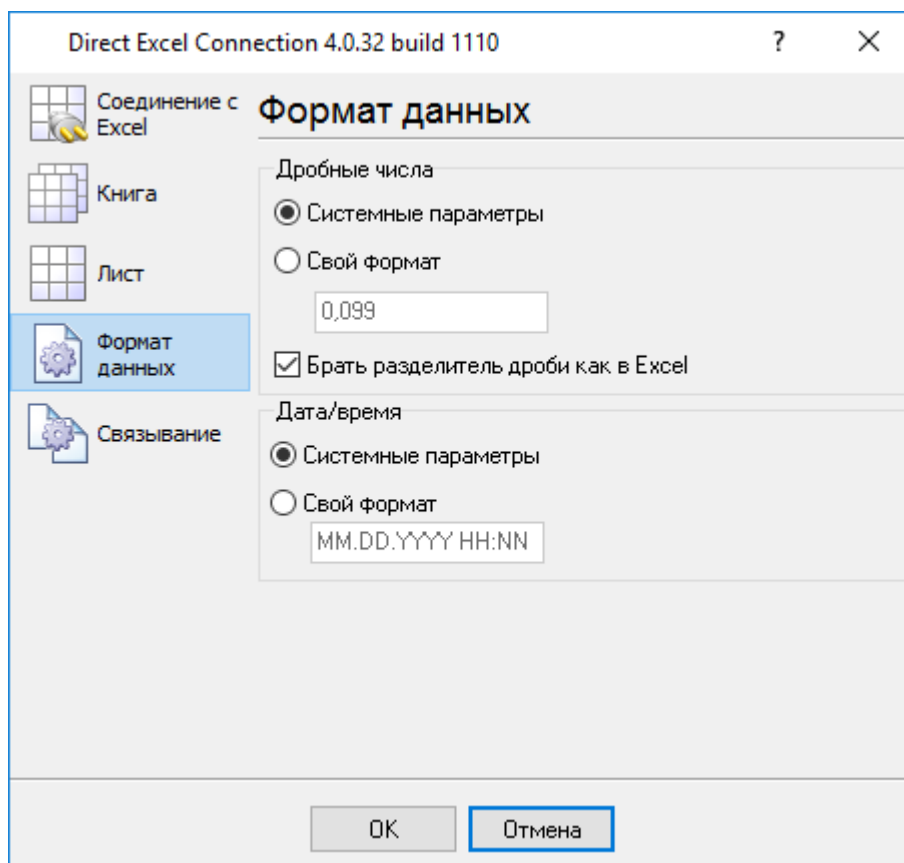
.4

6

(Float)

(DateTime).

" (. 1)



.1

d - , (1 - 31);
 dd - , (01 - 31);
 ddd - (-) ,
 dddd - (-) ;
 m - , (1 - 12);
 mm - , (01 - 12);
 mmm - (-) ,
 mmmm - (-) ,

yy - (00 - 99);
 yyyy - (0000 - 9999);
 h - (0 - 23);
 hh - (00 - 23);
 n - (0 - 59);
 nn - (00 - 59);
 s - (0 - 59);
 ss - (00-59).

0 - 0.

-

. -

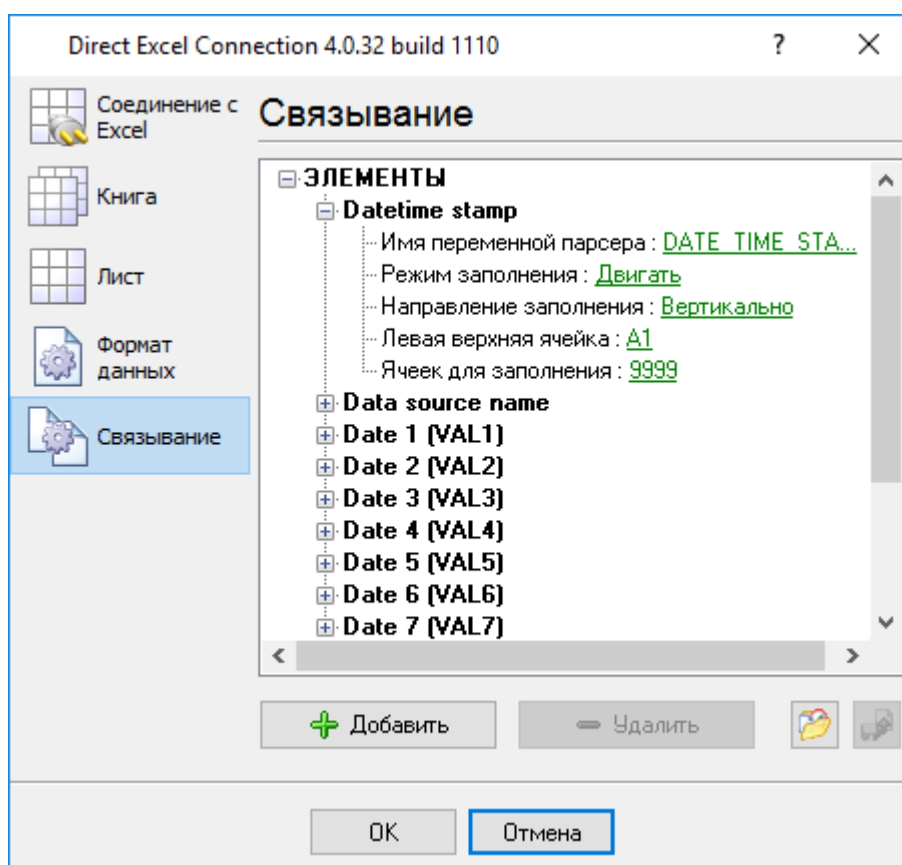
" (Windows Control Panel) " (Number Format)
 " (International section).

, - ;,
 " (Number Format) " (Windows Control Panel)
 " (International section).

E+ - 'E+', 'E-', 'e+', or 'e-'
 'E+' 'e+',
 'E-' 'e-'.

'xx'/'xx' -

7

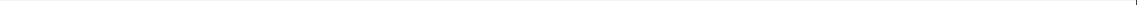


.1

"OK"
(. . . 1)

```

    ,
    ,
    ;
    Microsoft Excel
    Microsoft Excel
    ( )
    FIFO;
    Microsoft Excel
    Microsoft Excel,
    ( );
    Microsoft Excel.
    Microsoft Excel.
    A1
    "
    "
    {}
    A1.
    "Expressions".
    :
    A{DEVICE_ID} -
    "DEVICE_ID"
    A1 - A10,
    1-10.
    Microsoft Excel.
    Excel
    Excel
    65535
    " "
  
```



,
.
,
"OK".
.
," "