



"ODBC Database"

1		1
2		1
3	<b>ODBC Database</b>	<b>2</b>
4		<b>3</b>
5		<b>3</b>
1	DSN? .....	3
2	.....	4
3	.....	8
	Oracle .....	8
	FoxPro .....	8
4	.....	8
	.....	8
	dBASE .....	9
	Paradox .....	9
	Excel .....	10
	.....	11
5	.....	11
6	.....	13
7	ODBC .....	15
8	.....	16
6	?	<b>20</b>
1	.....	20

1

"ODBC database" ( ODBC)  
 ( ). ODBC ,  
 ( , ),  
 :

- SQL. ;
- MS SQL Server;
- Oracle database ( 7)
- dBASE I-IV files;
- Paradox;
- DBF;
- MS Excel;
- CSV;
- ODBC ( , Lotus Notes/Domino
- ODBC NotesSQL).

( , ),  
 SQL Database Professional.

2

ODBC Database :

: Windows 2000 SP4 , 32-x 64-x

5 MB

( ), Advanced Serial Data Logger.



# 4

## Plug-in -

Advanced Serial Data Logger

# 5

## 5.1 DSN?

Microsoft, DSN (data source name - ) -  
 ODBC." ODBC.  
 DSN

### DSN?

- DSN - DSN DSN:  
 DSN ( ).
- DSN - DSN DSN,  
 DSN, DSN  
 DSN.  
 ?!  
 ODBC, Visual Basic Access.

### DSN

DSN

MS Access.

----- file.dsn -----

[ODBC]

DRIVER=Microsoft Access Driver (\*.mdb)

ReadOnly=0

UserCommitSync=Yes

Threads=3

SafeTransactions=0

PageTimeout=5

MaxScanRows=8

MaxBufferSize=512

ImplicitCommitSync=Yes

FIL=MS Access

DriverId=25

## 5.2

ODBC.

ODBC

: Oracle, MS SQL, MS Access, MS Excel, FoxPro, dBASE.

ODBC

ODBC

Microsoft ([www.microsoft.com](http://www.microsoft.com))

1.

ODBC

" (.1).

ODBC" ( .2).

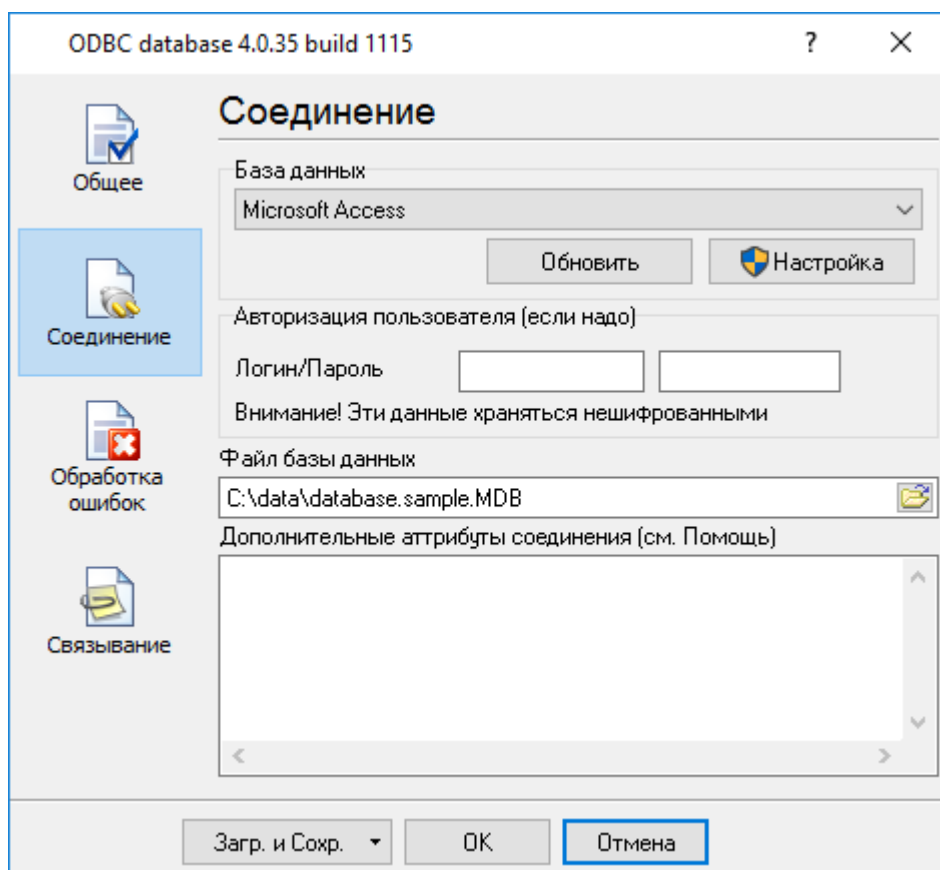
ODBC

Internet Explorer 5.0

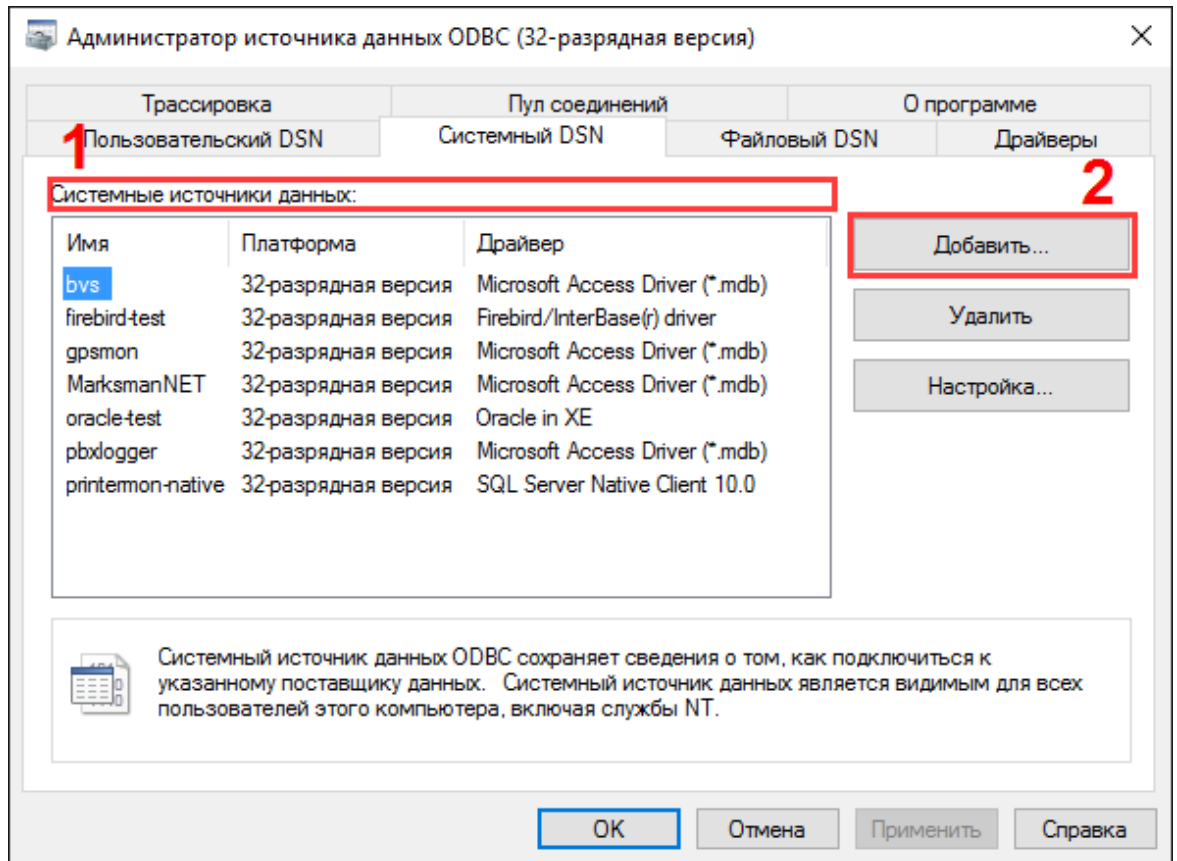
Microsoft Data Access Components (MDAC)

Microsoft

<http://www.microsoft.com/odbc>.



.1.



.2

2.

(.2).  
 (" DSN"),  
 Windows NT/2000/XP,  
 " DSN".  
 " " " (.1)

3.

! !

4.

, DBF Microsoft Access,  
"

5.

ODBC :



```
[DSN=<data-source-name>]
[FILEDSN=<data-source-name.dsn>]
[UID=<          >]
[PWD=<          >]
[DBQ=<          >]
[ISOLATIONLEVEL=<value>]
```

- **DSN** -

- **FILEDSN** - .dsn ( . . DSN).

- **UID** - ( );

- **PWD** - ( );

- **DBQ** - ( , MS Access).

```
[<          >=<          >]
```

DSN.

## 1. ODBC

1:

"MS Access 97 Database",

"D:\incom.mdb":

DBQ=D:\incom.mdb

2:

"Payroll"

Oracle "moola",

DSN=Payroll

UID= /

SERVER=moola

6.

"OK" ( .1)

"\_\_\_\_\_".



## 5.4.2 dBASE

- **COLLATINGSEQUENCE** - : ASCII ( ) International.  
Collating Sequence
- **DEFAULTDIR** -
- **DELETED** - = 1, = 0,  
( )  
"Show Deleted Rows"
- **DESCRIPTION** - "Description"
- **DRIVER** - DLL
- **DRIVERID** - , 21 (dBASE III), 277 (dBASE IV), 533 (dBASE 5.0)
- **FIL** - : dBASE III, dBASE IV, or dBASE 5
- **PAGETIMEOUT** - - 600 (60 ).  
ODBC  
"Page Timeout"
- **READONLY** - TRUE ; FALSE  
"Read Only"
- **STATISTICS** - dBASE, ODBC  
"Approximate Row Count"
- **THREADS** - 3  
"Threads"

## 5.4.3 Paradox

- **COLLATINGSEQUENCE** - : ASCII ( ) International.  
Collating Sequence
- **DEFAULTDIR** -
- **DESCRIPTION** - "Description"
- **DRIVER** - DLL
- **DRIVERID** - , 26 (Paradox 3.x), 282 (Paradox 4.x), 538 (Paradox 5.x)
- **FIL** - : Paradox 3.x, Paradox 4.x, or Paradox 5.x

- **PAGETIMEOUT** - , - 600 (60 ).  
: ODBC  
"Page Timeout"
- **PARADOXNETPATH** - PDOXUSRS.net ( Paradox 4.x) PARADOX.net ( Paradox, Paradox 5.x).  
Paradox.  
Paradox. "Select Network Directory"
- **PARADOXNETSTYLE** - Paradox: "3.x"  
Paradox 3.x "4.x" Paradox 4.x 5.x. "3.x" "4.x"  
Paradox 4.x 5.x; Paradox 3.x, "3.x". "Net Style"
- **PARADOXUSERNAME** - Paradox.  
"User Name"
- **PWD** - ODBC SQLDriverConnect DSN.  
Paradox.
- **READONLY** - TRUE ; FALSE  
"Read Only"
- **THREADS** - 3  
"Threads"

#### 5.4.4 Excel

- **DBQ** - Microsoft Excel Microsoft Excel 5.0, 7.0, 97. "Database"
- **DEFAULTDIR** - Excel.  
"Select Directory or Select Workbook"
- **DESCRIPTION** - "Description"
- **DRIVER** - DLL
- **DRIVERID** - 534 (Microsoft Excel 3.0), 278 (Microsoft Excel 4.0), 22 (Microsoft Excel 5.0/7.0), 790 (Microsoft Excel 97)
- **FIL** - Excel 3.0, Excel 4.0, Excel 5.0, Excel 7.0, Excel 97
- **FIRSTROWHASNAMES** - 1  
Excel
- **MAXSCANROWS** - 1 16. : 8.  
0,  
"Rows to Scan"

- **READONLY** - TRUE ; FALSE  
"Read Only"
- **THREADS** - 3  
"Threads"

### 5.4.5

- **CHARACTERSET** - : OEM ANSI.
- **COLNAMEHEADER** - TRUE  
Excel
- **DEFAULTDIR** -
- **DESCRIPTION** -  
"Description"
- **DRIVER** - DLL
- **DRIVERID** - 27 (Text)
- **EXTENSIONS** -  
"Extensions"
- **FIL** - Text
- **FILETYPE** - (Text).
- **FORMAT** - FIXEDLENGTH, TABDELIMITED, CSVDELIMITED ( ),  
DELIMITED() ( ).
- **MAXSCANROWS** - 1 32767. : 25.  
0,  
"Rows to Scan"
- **READONLY** - TRUE ; FALSE  
"Read Only"

### 5.5

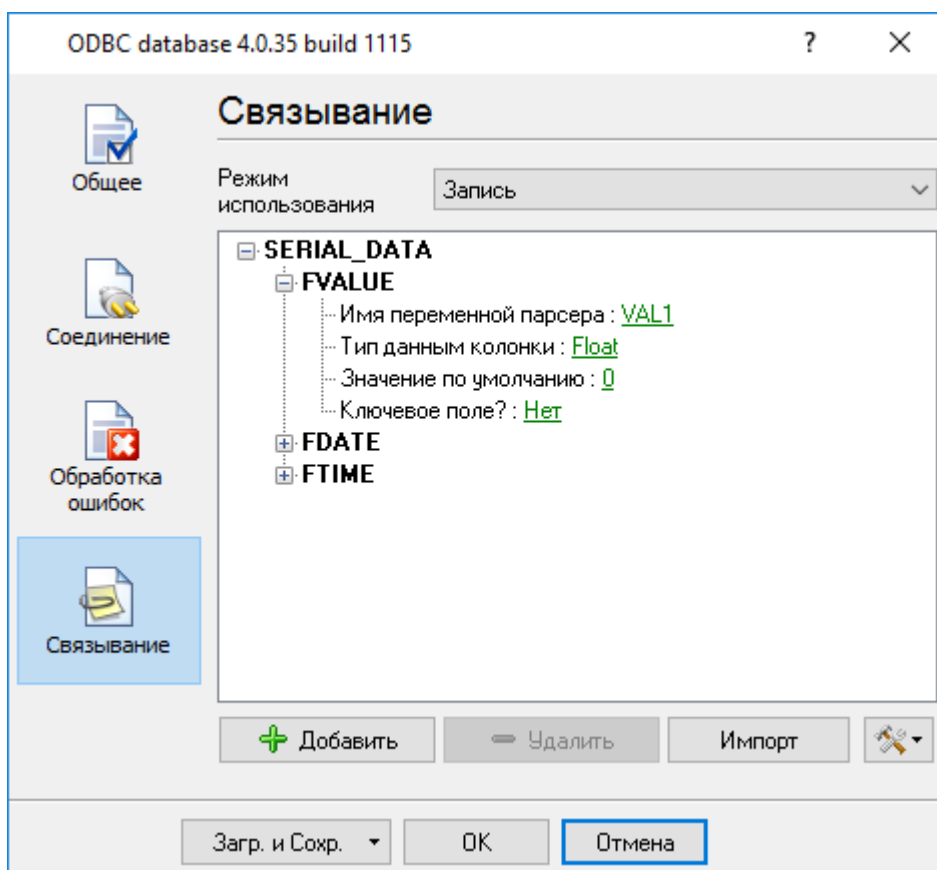
(FOREIGN KEY), (PRIMARY KEY),  
" ( . 1)



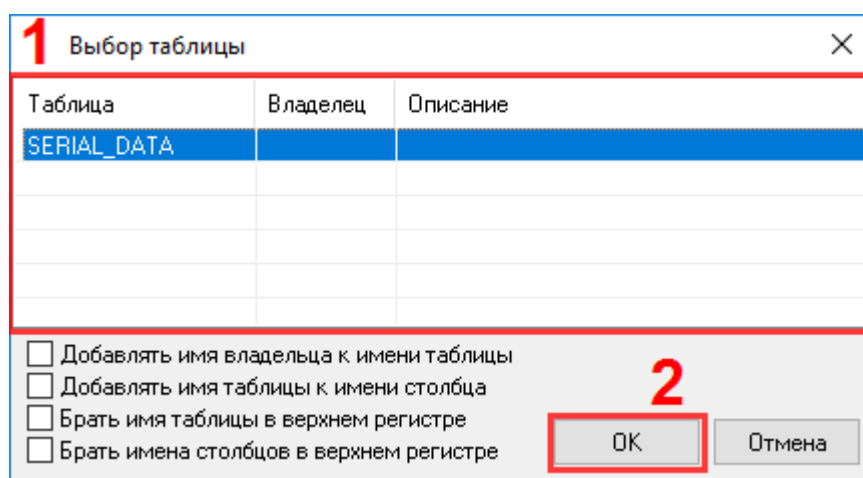
## 5.6

ANSI SQL92,  
(a-z, A-Z), ( \_).  
ANSI SQL : NUMBER, DATE, TIME, STRING,  
SELECT, SUM, MIN, MAX, \_\_\_\_\_.

1. ( .1). , " " ( .2).  
"OK". , ,



.1



.2

2.

ODBC



DEFAULT

.  
,  
NULL.  
NULL

5.7

ODBC

- 
- Microsoft Excel, Microsoft Excel "!", "\$".
- Microsoft Excel, Microsoft Excel 3.0 4.0. Microsoft Excel, < \_ > Microsoft Excel, 5.0, 7.0, 97. < \_ >
- dBASE, ASCII 127
- Microsoft Access, 64
- dBASE, Microsoft Excel 3.0 4.0, Paradox, Text, MS-DOS CON, AUX, LPT1, LPT2
- ( , )
- Microsoft Access Microsoft Excel, ( ).
- Paradox, 64 - 25 Text, - 64
- dBASE, ASCII 127
- Microsoft Excel, "!" "\$", "!"
- Microsoft Excel ( ODBC, ( ))
- ( ) , "Col1"
- Text, F1, - F2, . . .



---

CreateUser  
CreateWorkspace  
CURRENCY  
CurrentUser  
-D  
DATABASE  
DATE  
DATETIME  
DELETE  
DESC  
Description  
DISALLOW  
DISTINCT  
DISTINCTROW  
Document  
DOUBLE  
DROP  
-E  
Echo  
Else  
End  
Eqv  
Error  
EXISTS  
Exit  
-F  
FALSE  
Field, Fields  
FillCache  
FLOAT, FLOAT4, FLOAT8  
FOREIGN  
Form, Forms  
FROM  
Full  
FUNCTION  
-G  
GENERAL  
GetObject  
GetOption  
GotoPage  
GROUP  
GROUP BY  
GUID  
-H  
HAVING  
-I  
Idle  
IEEEDOUBLE, IEEESINGLE  
If  
IGNORE  
Imp  
IN  
INDEX  
Index, Indexes  
INNER  
INSERT

InsertText  
INT, INTEGER, INTEGER1, INTEGER2, INTEGER4  
INTO  
IS

-J  
JOIN

-K  
KEY

-L  
LastModified  
LEFT  
Level  
Like  
LOGICAL, LOGICAL1  
LONG, LONGBINARY, LONGTEXT

-M  
Macro  
Match  
Max, Min, Mod  
MEMO  
Module  
MONEY  
Move

-N  
NAME  
NewPassword  
NO  
Not  
Note  
NULL  
NUMBER, NUMERIC

-O  
Object  
OLEOBJECT  
OFF  
ON  
OpenRecordset  
OPTION  
OR  
ORDER  
Orientation  
Outer  
OWNERACCESS

-P  
Parameter  
PARAMETERS  
Partial  
PERCENT  
PIVOT  
PRIMARY  
PROCEDURE  
Property

-Q  
Queries  
Query

---

Quit  
-R  
REAL  
Recalc  
Recordset  
REFERENCES  
Refresh  
RefreshLink  
RegisterDatabase  
Relation  
Repaint  
RepairDatabase  
Report  
Reports  
Requery  
RIGHT  
-S  
SCREEN  
SECTION  
SELECT  
SET  
SetFocus  
SetOption  
SHORT  
SINGLE  
SMALLINT  
SOME  
SQL  
StDev, StDevP  
STRING  
Sum  
-T  
TABLE  
TableDef, TableDefs  
TableID  
TEXT  
TIME, TIMESTAMP  
TOP  
TRANSFORM  
TRUE  
Type  
-U  
UNION  
UNIQUE  
UPDATE  
USER  
-V  
VALUE  
VALUES  
Var, VarP  
VARBINARY, VARCHAR  
-W  
WHERE  
WITH  
Workspace  
-X

Xor  
-Y  
Year  
YES  
YESNO

6

?

6.1

" - 'Plugins"

( ) -

%s [%s] -

(%s) -

%s. (%s) -

%s. (%s) -

( , ) .

[support@aggsoft.ru](mailto:support@aggsoft.ru)

"%s"