

COM Port Data Emulator

<b>1</b>		<b>1</b>
<b>2</b>	,	<b>1</b>
1	.....	1
2	.....	2
<b>3</b>		<b>3</b>
1	.....	3
2	.....	3
<b>4</b>		<b>3</b>

# 1

COM Port Data Emulator

, COM

, Ethernet,

RS232, TCP/IP UDP

COM Port Data Emulator

SCADA

- COM, RS232, RS485 ( ), TCP/IP, UDP;
- ;
- COM RS232;
- TCP/IP;
- ;
- COM RS232, ;
- ;

# 2

## 2.1

Copyright © 1999-2016 AGG Software.  
All Rights Reserved



[sales@aggsoft.ru](mailto:sales@aggsoft.ru)

### 3

#### 3.1

:

- Windows 2000 Professional SP 4;
- Windows 2000 Server;
- Windows XP x86 x64;
- Windows 2003 Server x86 x64;
- Windows Vista ( ) x86 x64.
- Windows 7 ( ) x86 x64.
- Windows 2008 Server ( ) x86 x64.
- Windows 8 ( ) x86 x64.

#### 3.2

COM Port Data Emulator.

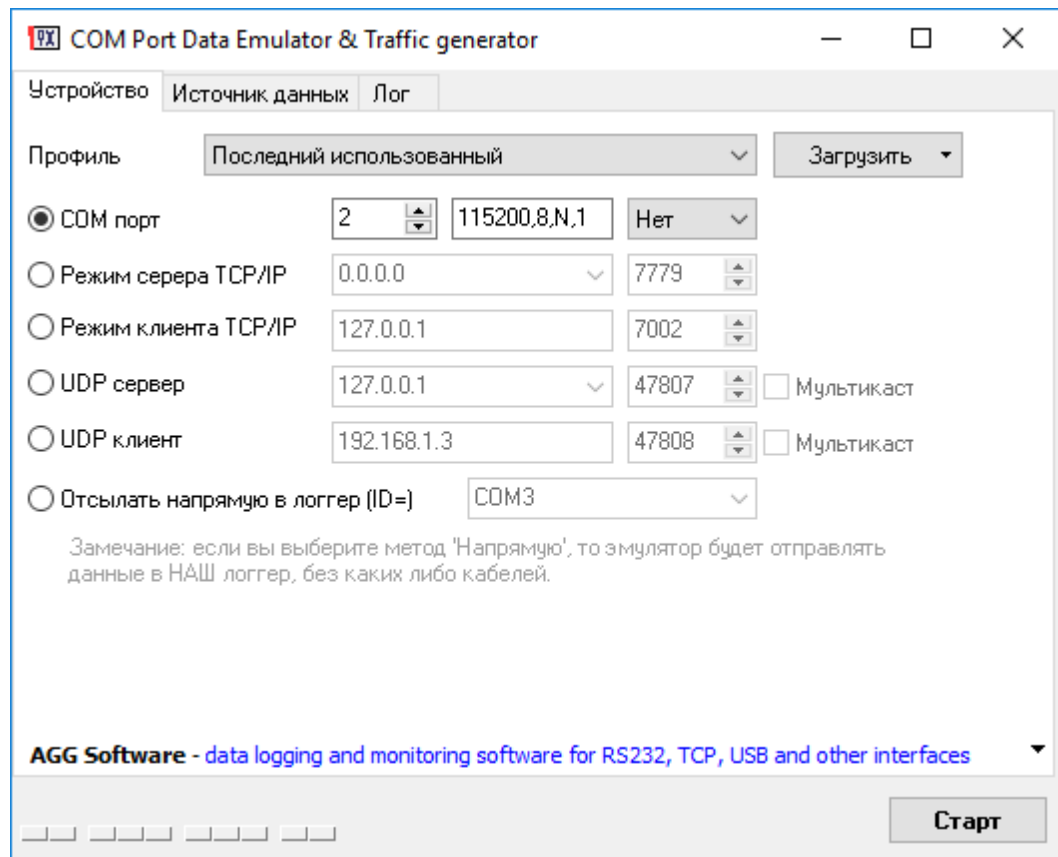
, COM Port Data Emulator  
Data Emulator"

"\Programs Files\COM Port

COM Port Data Emulator

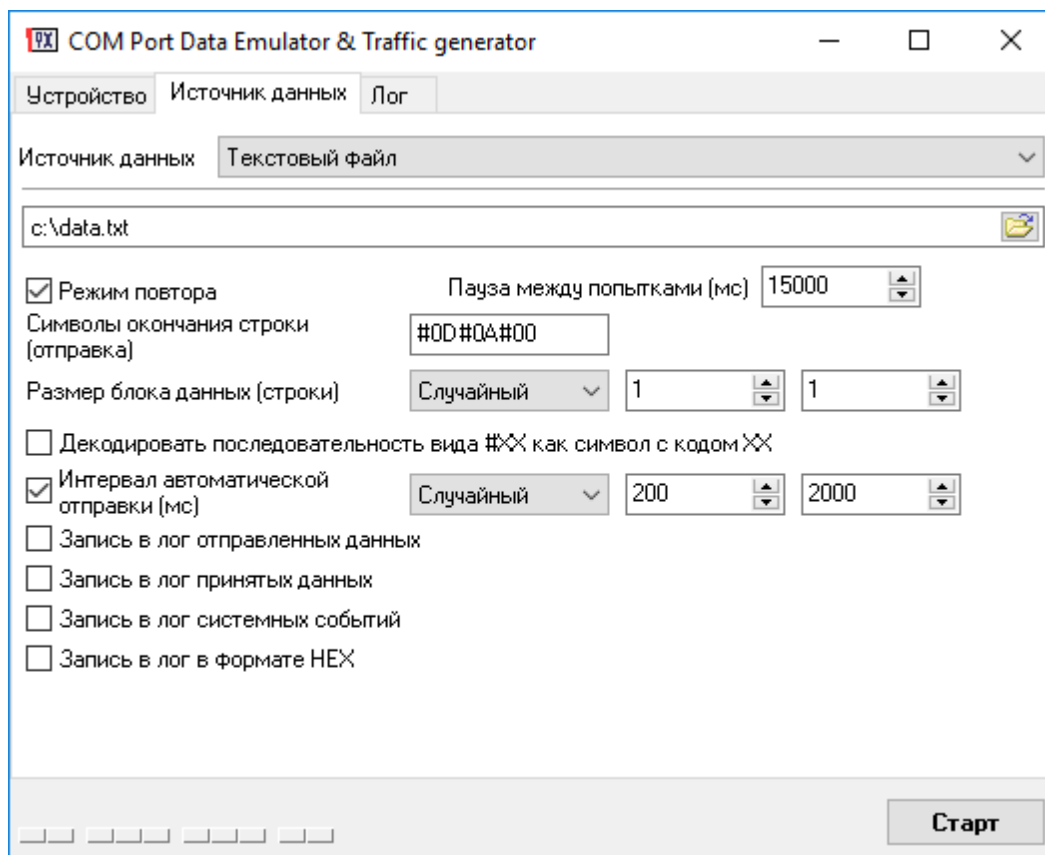
### 4

:



- :
1. : COM , TCP/IP , TCP/IP , UDP ;
  2. ;
  3. " " ;
- (COM) :
1. COM ;
  2. : N - , E - , O - , S - , M - ;
  3. : (XON/XOFF) (RTS/CTS).
- TCP/IP    UDP** :
1. IP , "0.0.0.0"
  2. ,
- TCP/IP    UDP** :

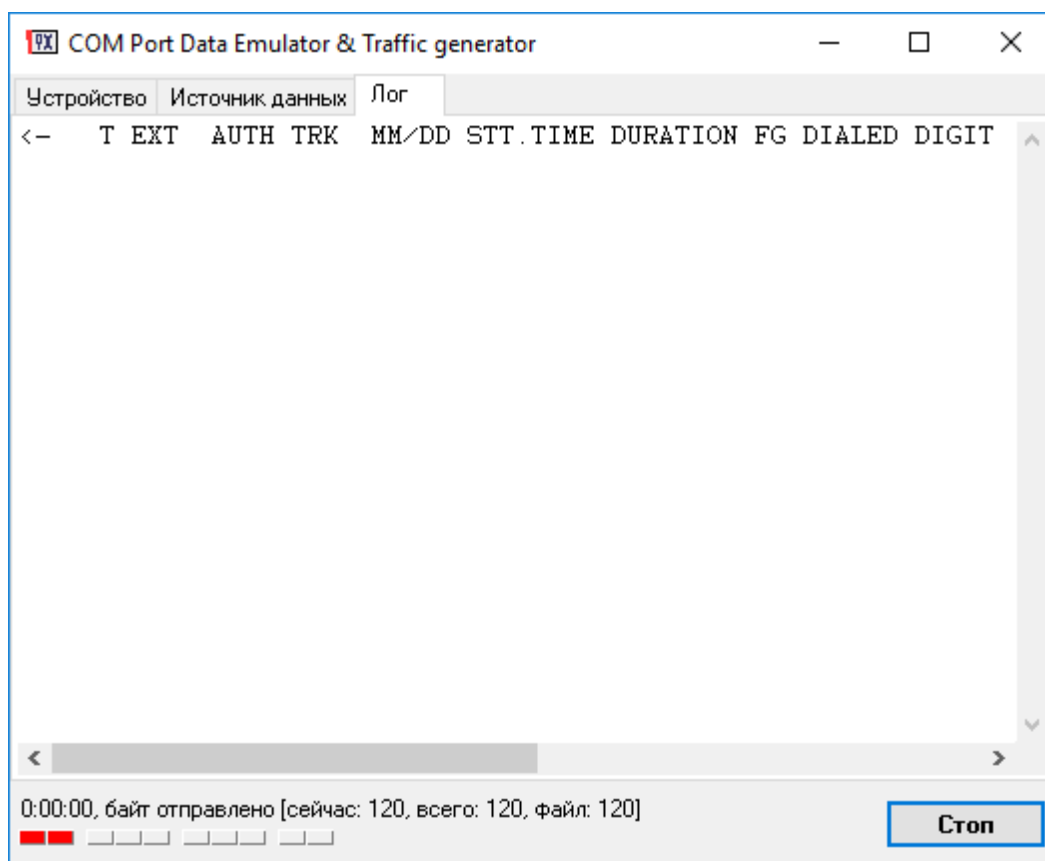
1. IP
- 2.



1. - ASCII.
2. -
3. -
4. -
5. -

ASCII #0D, 0D ASCII  
<CR> ASCII #XX XX -  
ASCII #0D, 0D (<CR>).  
ASCII <CR> ASCII #0D, 0D  
exe.log". "asdlog.  
:





&lt;--

#00.

&gt;--

.