



Advanced TCP/IP Data Logger

1		1
1	Advanced TCP/IP Data Logger	1
2	2
2		4
1	4
2	5
3	5
4	5
3		6
1	6
2	6
4		6
1	6
2	8
3	9
4	10
5	10
5		11
1	11
	TCP/IP	11
2	18
	18
	21
	22
3	-	23
	-	23
	-	27
	28
4	29
	29
	OPC	33
5	37
	37
	39
	40
	Windows 2000	41

Window s Vista 44
..... 45

6

?

46

1

..... 46

1

1.1 Advanced TCP/IP Data Logger

Advanced TCP/IP Data Logger
Excel, Access,
Logger TCP/IP
Windows. Advanced TCP/IP Data
Ethernet.

TCP UDP

Advanced TCP/IP Data Logger

SCADA DDE
(Dynamic Data Exchange) OPC ODBC,

Advanced TCP/IP Data Logger:

-
- (ASCII)
-
-
-
-
- ODBC- (MS SQL, Oracle, MS
Access, MS Excel, dBASE (MS Excel,
MS Access)
- Advanced TCP/IP Data Logger DDE OPC
- Advanced TCP/IP Data Logger Microsoft Excel
(OLE)
-
-
-
- Windows 2000+, x86 x64.

Advanced TCP/IP Data Logger
Advanced TCP/IP Data Logger, ASCII MODBUS.

Advanced TCP/IP Data Logger Windows 2000+,

Advanced TCP/IP Data Logger

Advanced TCP/IP Data Logger
(Terminal Server)

RS232-Ethernet

Ethernet.
RS485,
RS232 RS485.

Terminal Server
TCP/IP

RS232 RS485
Ethernet IP
TCP/IP

RS232

-
-
-
-
-
-
-
-
-
-

RS-232 RS-485;

/ ;

RFID;

: <https://www.aggsoft.ru/>

: <https://www.aggsoft.ru/tcpip-data-logger.htm>

1.2

ASCII -

ASCII -

Windows

ASCII. ASCII

*.TXT (

README.TXT).

Binary File -

ASCII (0 255).

Bytes () - , , .

Bit () - : 0 1. 8
8 () .

Cable () - , .

Client/Server (/) - , , .
(, , .)
() .

DNS (Domain Name System) - DNS
(TCP/IP) DNS
() IP . www.aggsoft.com
198.63.211.24.

Internet () - TCP/IP .

IP, Internet Protocol () - Internet Protocol,
TCP/IP, IP IP ,
'xx.xx.xx.xx'.

IP (Internet Protocol) - TCP/IP.
IP , IP . IP
, : 198.63.211.24.

LAN (Local Area Network) - .

NIC, Network Interface Card () - , ,
(, 10baseFL). (PCI, turbochannel,
nuBus, .)

PC () - Personal Computer () .

Ports () - .

Protocol () - .

TCP/IP, Transport Control Protocol / Internet Protocol - TCP IP ,
TCP/IP ,
Internet.

(Log file) - , , (.log) —

2

2.1

Copyright © 1999-2024 AGG Software.
All Rights Reserved

1. Advanced TCP/IP Data Logger -

2. Advanced TCP/IP Data Logger sales@aggsoft.ru

3. Advanced TCP/IP Data Logger , ,
 Advanced TCP/IP Data Logger

4. **Advanced TCP/IP Data Logger** **"AS IS".**

5. , , , ,
 , , , ,
 , ,

6. Advanced TCP/IP Data Logger ,

7. - , ,

 Advanced TCP/IP Data Logger
 Advanced TCP/IP Data Logger.

2.2

shareware-

[5](#)

- 21
- ;

2.3

2.4

Advanced TCP/IP Data Logger	https://www.aggsoft.ru/support/
--------------------------------	---

3

3.1

- Windows 2000 SP 4 - Windows 11 (x86 x64,).

3.2

Advanced TCP/IP Data Logger.

, Advanced TCP/IP Data Logger
Files\Advanced TCP/IP Data Logger"

"\Programs

Advanced TCP/IP Data Logger

4

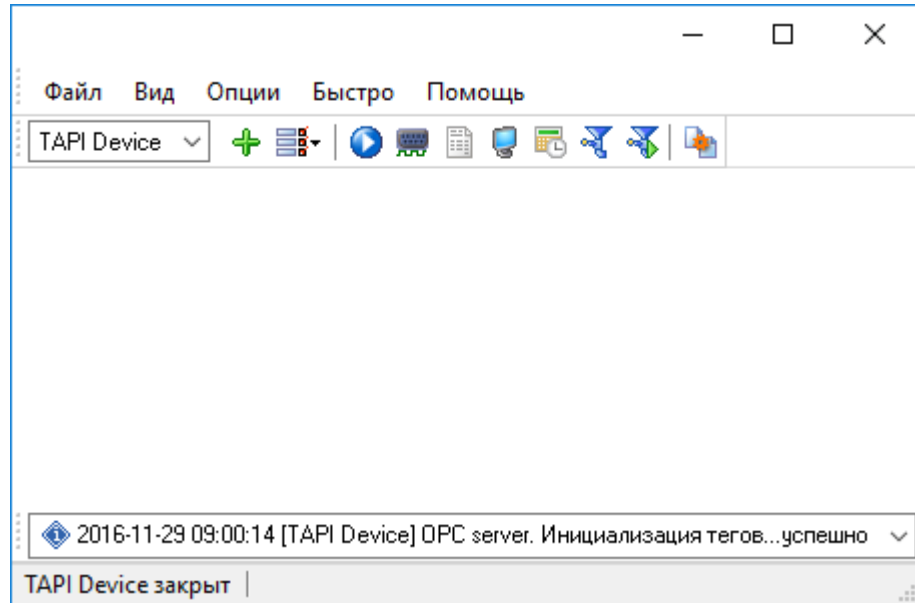
4.1

Advanced TCP/IP Data Logger

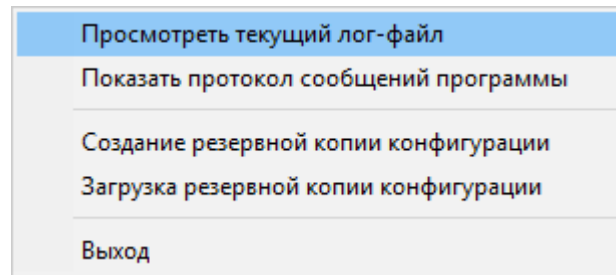
Advanced TCP/IP Data Logger " ".

(. 1),

2) 8 (" - ..."), " " (.



. 1.



. 2.

C:\. ,

1-2-3-4

1.

" " [11] " IP"

2.

" " ()

3.

, [29]

4. Advanced TCP/IP Data Logger

Advanced TCP/IP Data Logger

4.2

(NIC).

- Advanced TCP/IP Data Logger (NIC), IP
- Advanced TCP/IP Data Logger IP
- Advanced TCP/IP Data Logger DHCP, IP
- IP 0.0.0.0.

" TCP/IP ".

23

27

(6).

Advanced TCP/IP Data Logger " 18 ",

37.

Advanced TCP/IP Data Logger

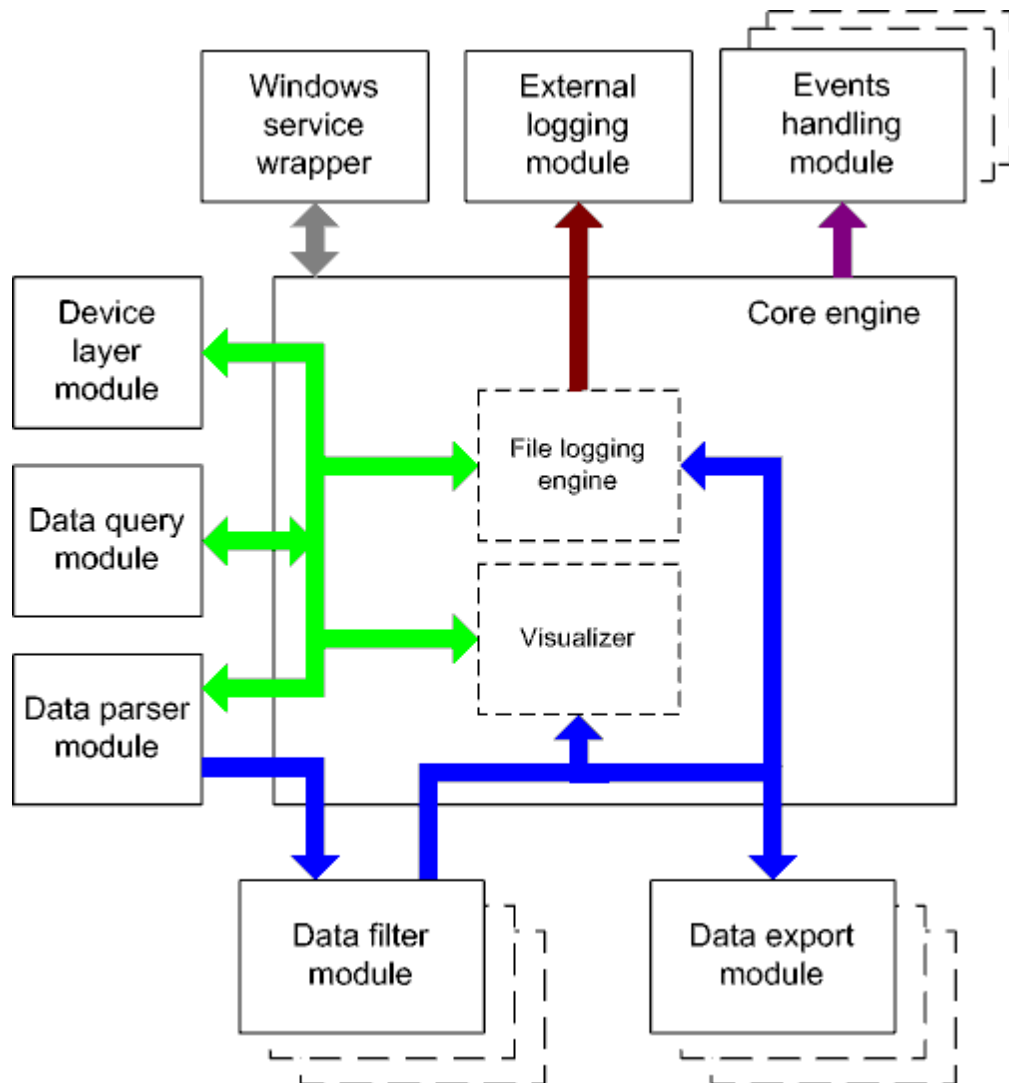
(plug-ins),

"

(

),

4.3



. 3.

:

■ - ().

■ - ().

- Core engine -
- Device layer module -
- Data query module -
- Data parser module -
- Data filter module -
- Data export module -
- Visualizer -
- File logging engine -
- Windows service wrapper -
- External logging module -
- Events handling module -

4.4

Windows. / COM-

4.5

1. -

2. .

1. " " " " ' :

2. regedit.exe : Windows.

Windows x64

HKEY_LOCAL_MACHINE\SOFTWARE\Wow6432Node\AGG Software\Advanced TCP/IP Data Logger

Windows x32

HKEY_LOCAL_MACHINE\SOFTWARE\AGG Software\Advanced TCP/IP Data Logger

- 3. Ctrl+S - " / " ;
 Ctrl+D - " / " ;
 Ctrl+P - ;
 Ctrl+L - log- ;
 Ctrl+R - ;
 Ctrl+E - Windows;
 Ctrl+M - ,
- 4. . . - ,
- 5. INI .
- 6. " ". 10 ,

5

5.1

5.1.1 TCP/IP

UDP TCP

(User Datagram Protocol). TCP

TCP (Transport Control Protocol) UDP

IP. TCP

TCP , TCP

, UDP

UDP

UDP
TCP, UDP

IP

TCP, UDP

Messaging,

UDP

IP.

Instant

Advanced TCP/IP Data Logger

TCP/IP

(

TCP/IP) Advanced TCP/IP Data Logger

1.

TCP/IP,
Advanced TCP/IP Data Logger
(www.yourserver.com)

IP

IP

"Plant1"

Advanced TCP/IP Data Logger

"Plant1",
IP

2.

IP

IP

Advanced TCP/IP Data Logger
(NIC),
IP

Advanced TCP/IP Data Logger

IP

IP

Microsoft Windows,

TCP/

IP

IP

Advanced TCP/IP Data Logger

"OK"

TCP/IP.

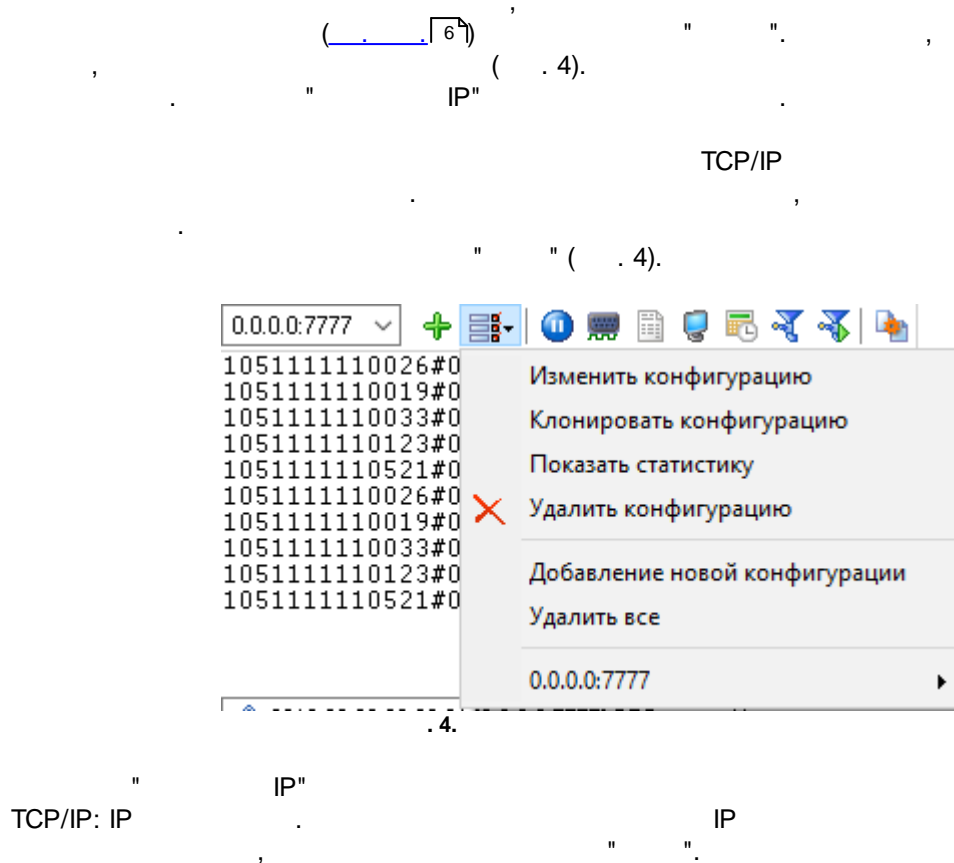
TCP/IP Data Logger

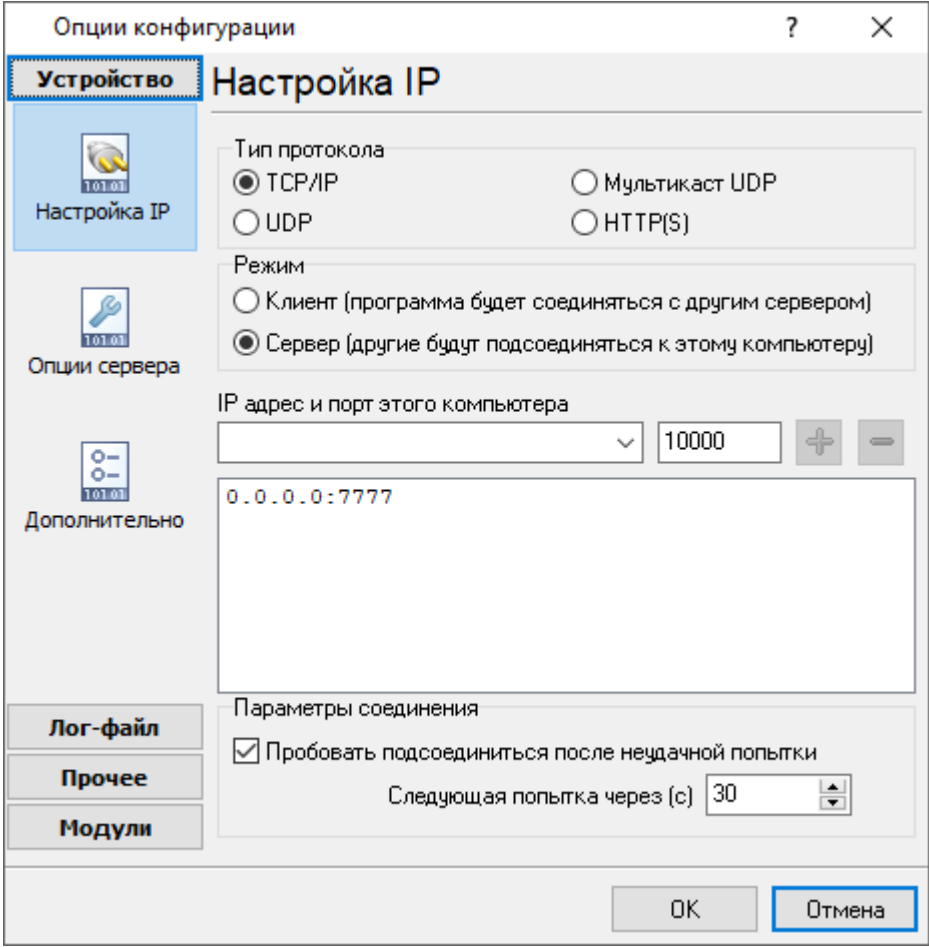
IP

Advanced

Advanced TCP/IP Data Logger

([www.yourserver.com](#)).





. 5. TCP/IP

IP , , . SMTP - 25, the telnet - 23, NNTP -

119, . . , Windows (Windows NT

SERVICES, WINTT\SYSTEM32\DRIVERS\ETC). SERVICES -

Advanced TCP/IP Data Logger

(,)

(,)

IP (socket).

,
 ,
 , IP
 ,
 ,
 " " IP
 (()).
 ,
) () " ()
 ", Advanced TCP/IP Data Logger
 N , "
 (c)".
 - IP
 , IP
 ,
 ,
 Advanced TCP/IP Data Logger - IP
 " "
 IP : 192.255.255.255
 IP , 255 .
 IP "+" "-" IP
 . IP
 "+" -
 "-" -
 :
 +192.168.1.255
 +127.255.255.255
 -1.1.1.1

(firewall)

Data Logger Microsoft Windows XP SP2 , Advanced TCP/IP
 . Windows Firewall,
 ,
 . Windows Firewall ,

(Security Alert).



.6.

-
-
-

7).

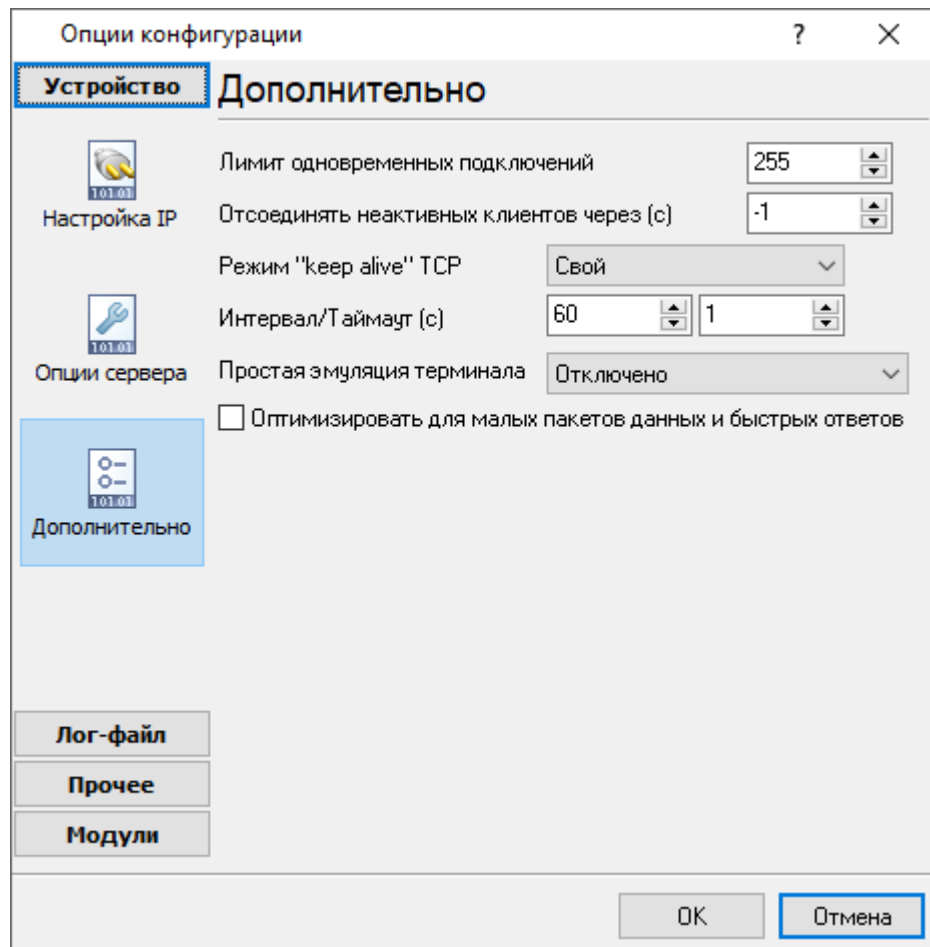
TCP/IP (

1500

"TCP/IP" :

() -

"-1",



.7.

TCP/IP

:

keep-alive TCP () -

" " keep-alive,

Windows.

1. -

2. - KeepAliveTime
KeepAliveInterval, :

[HKEY_LOCAL_MACHINE\System\CurrentControlSet\Services\Tcpip\Parameters]
KeepAliveTime (, 32) =
KeepAliveInterval (, 32) =

3. - 60/1 (60 ,
1).
: keep-alive

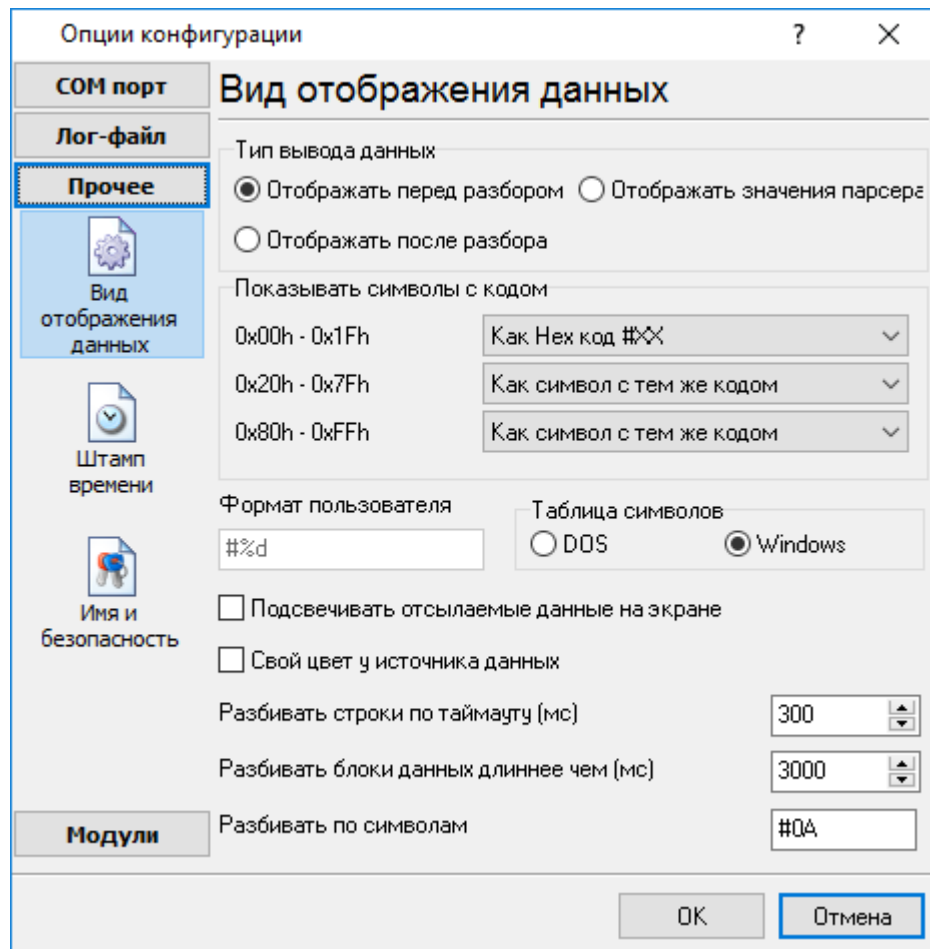
5.2

5.2.1

(. . . 6) 2 (. 8):

1.

2.



. 8.

" - " (. 8)

,

Hex-

%d

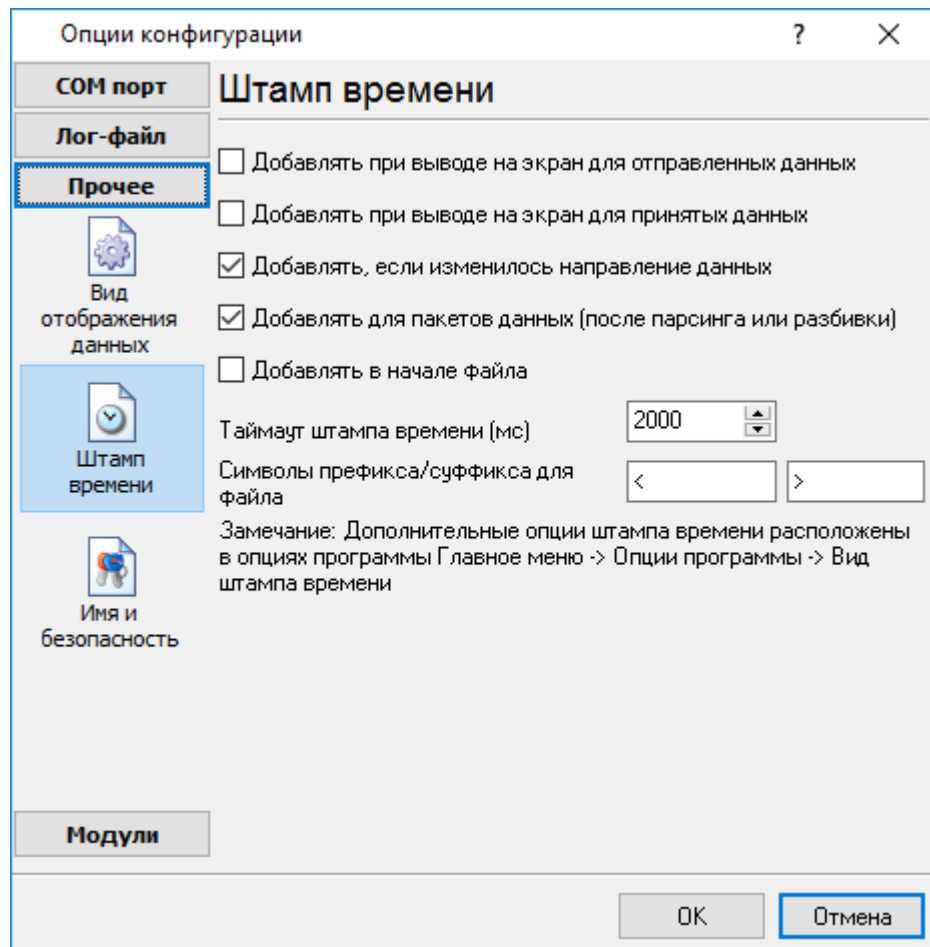
, %x -

(OEM).

: Windows DOS

- ,
.
- ,
, 0,
- ,
0,
- ,
,
,
,

5.2.2



.9.

()

(/).

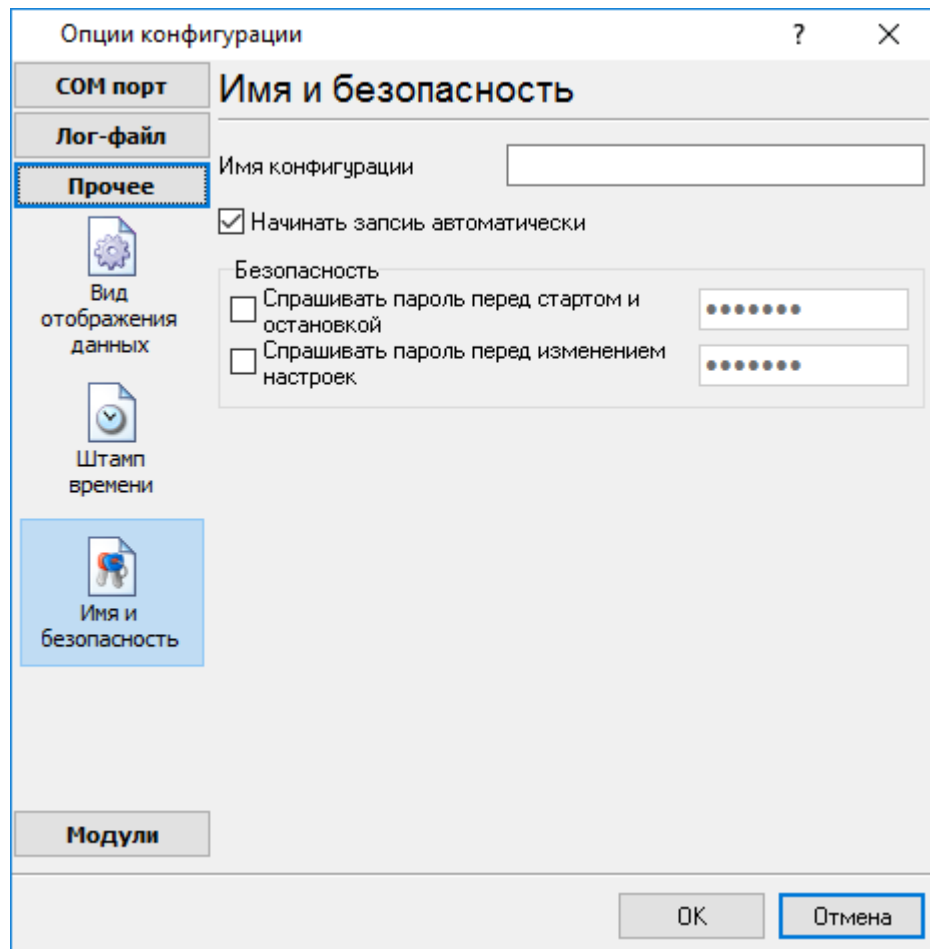
_____ 39
: >#0D#0A

5.2.3

(. 10)

" " _____ 45

" / "

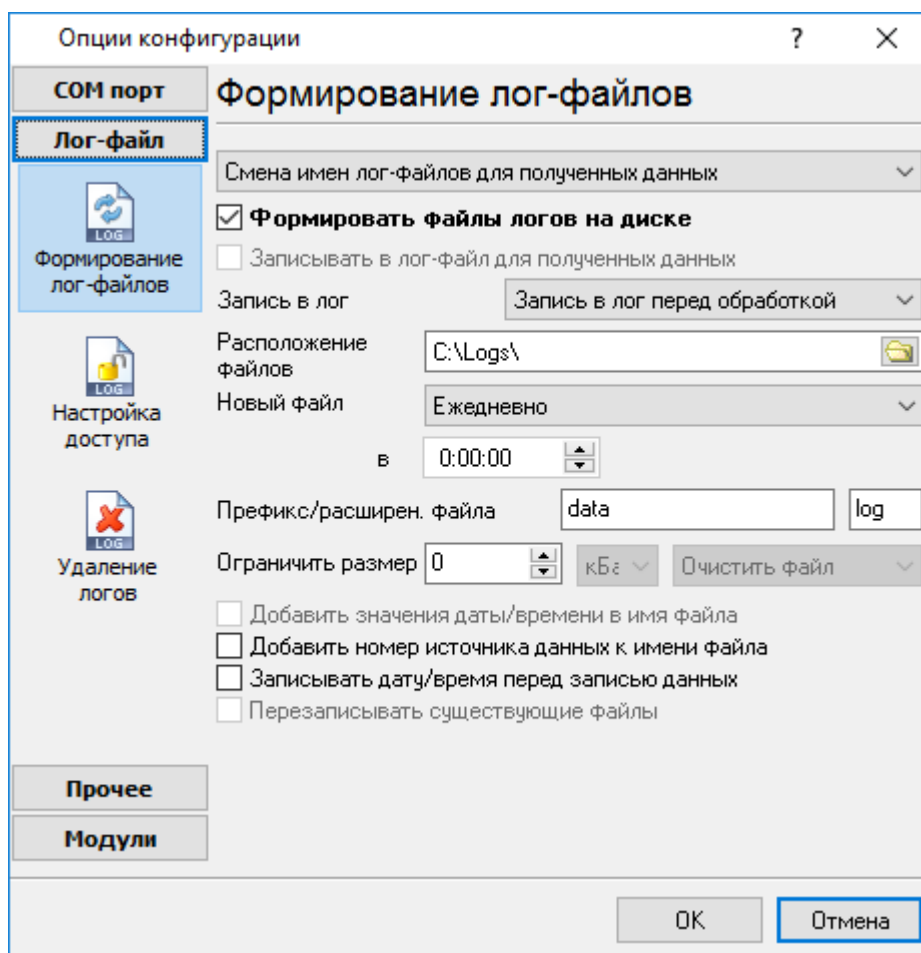


. 10.

5.3

5.3.1

(. 11).



. 11.

"OK".

Advanced TCP/IP Data Logger

"sample",

"log",

```

"sampleYYYYMMDD.log". 21-
2003 - "sample20030321.log".
• ( ).
, , , .
" " :
1. - , .
DDMMYYYY, DD - , MM -
YYYY - ;
2. - . MMYYYY;
3. - . YYYYMMDD;
4. - .
sample00000001.log. -
5. ;
6. - . WWYYYY, WW -
, YYYY -
7. ;
8. - . HHDDMMYYYY;
9. - .
"Schedule & Hotkeys",
:
D - , (1 - 31);
DD - , (01 - 31);
DDD - ( - ) ,
;
DDDD - ( - )
, ;
M - , (1 - 12);
MM - , (01 - 12);
MMM - ( - ) ,
;

```

```

MMMM - ( - ) ,
;
YY - (00 - 99);
YYYY - (0000 - 9999);
H - , (0 - 23);
HH - , (00 - 23);
N - , (0 - 59);
NN - , (00 - 59);
S - , (0 - 59);
SS - , (00-59).
W - ISO ( - ).
WW - ( - ).

```

```

YYYY/"MM"/"DD - 2023/01/01
YYYY/"MM"/"DD"THH:NN:SS - 2023/01/01THH:NN:SS

```

```

CLIENTID - ( - ).
CLIENTNAME - ( - ).

```

```

: "sample_log", "txt".
: = sample_log_, = txt ( !).
HHDDMMYYYY.
4 7 /

```

```

sample20030321.log. , COM1-

```

```

/
4 7.

```

```

" "
1. - !

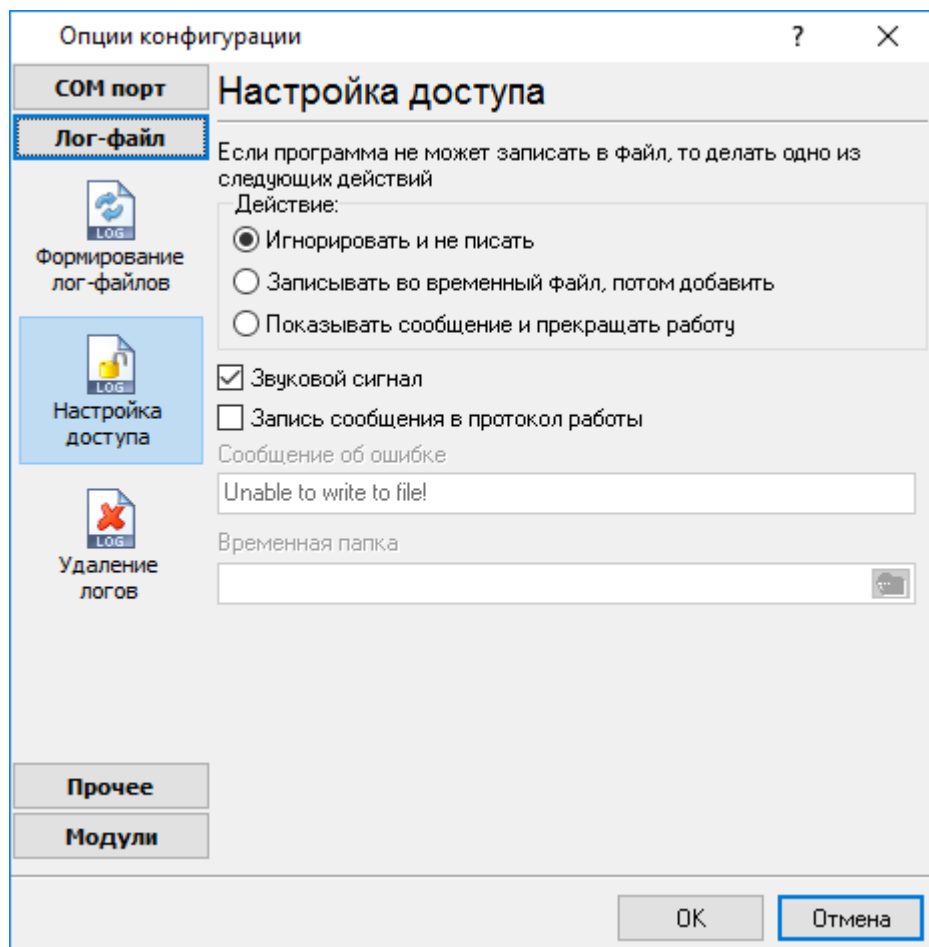
```

2. -
3. () -
4. ().

5.3.2

Office (, Microsoft Word),
TCP/IP Data Logger

Microsoft
Advanced



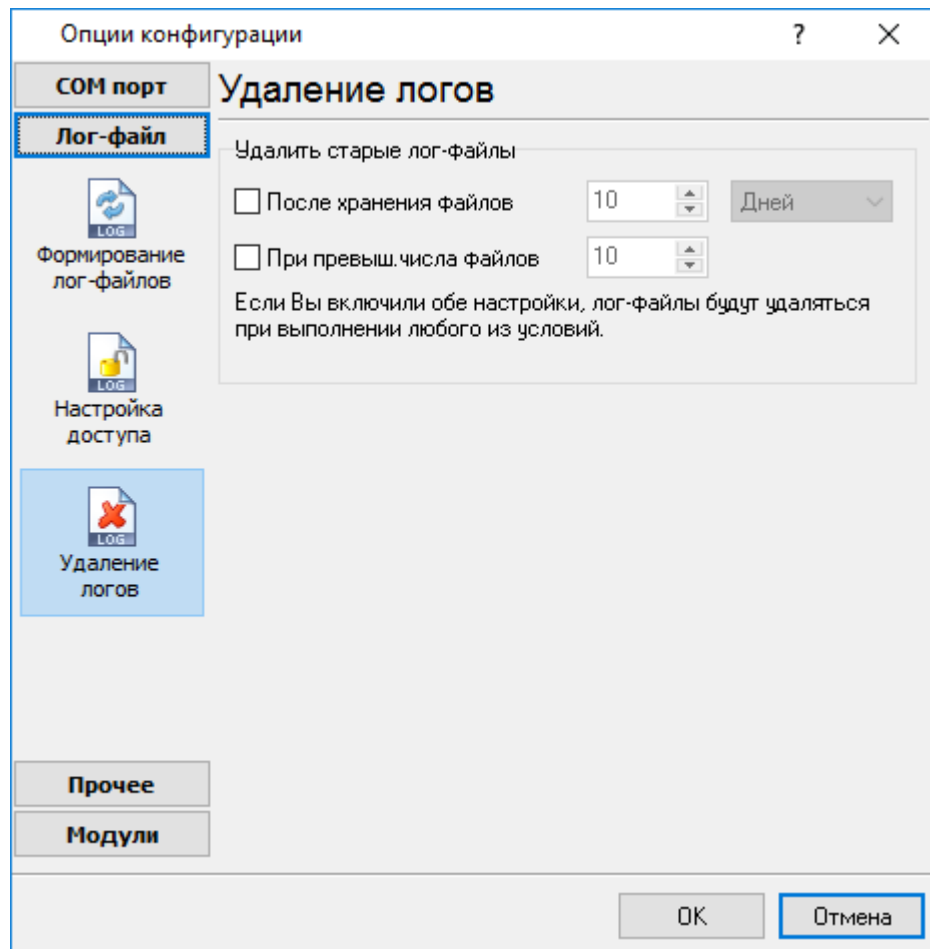
. 12.

Advanced TCP/IP Data Logger
(. 12),

- ; - ,
- , - ,
- ; -

5.3.3

- (. 13).



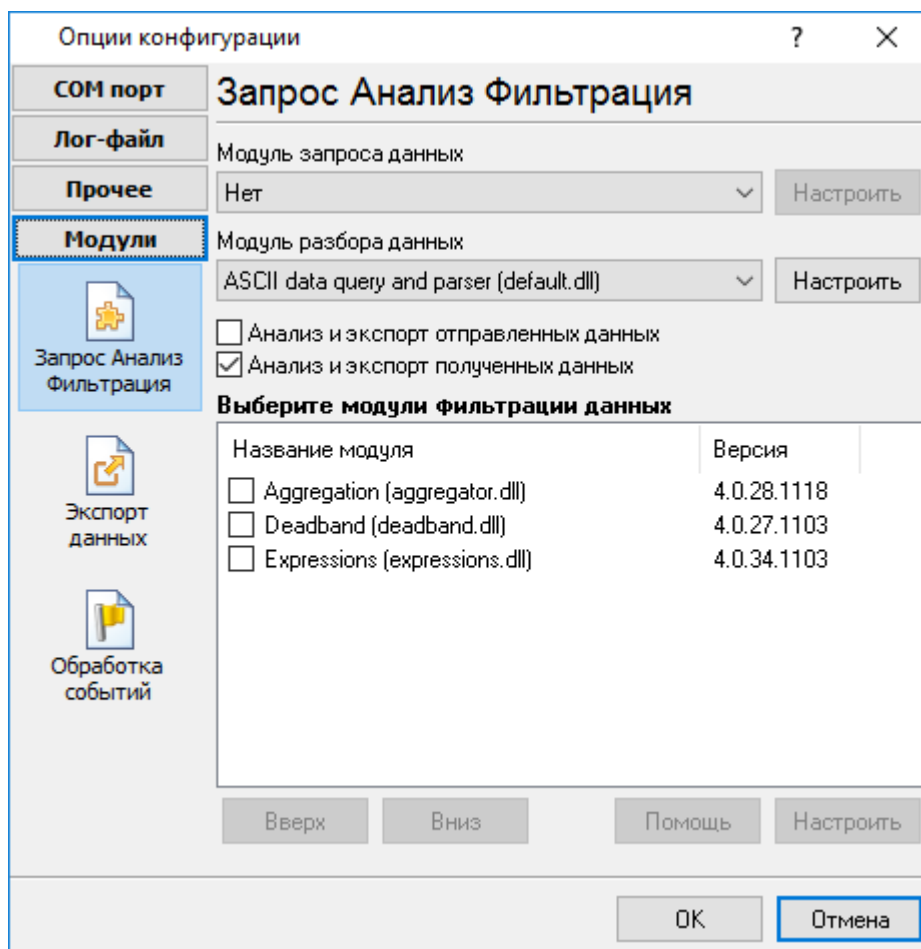
. 13.

5.4

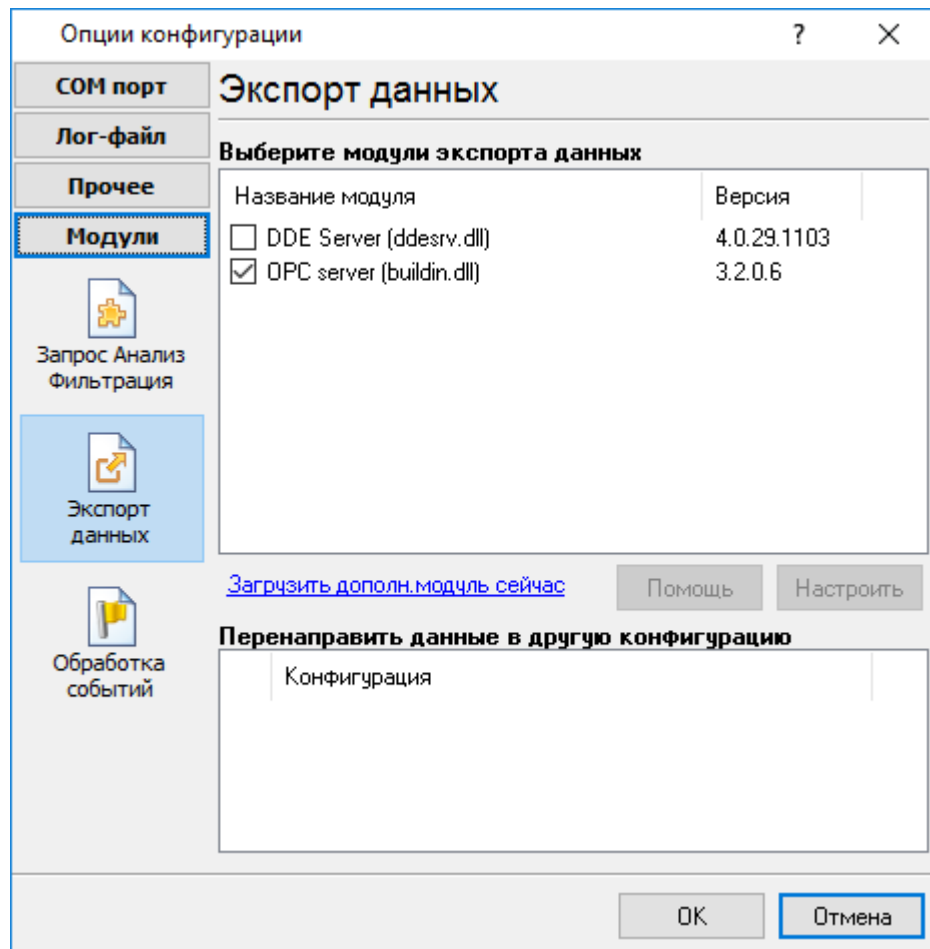
5.4.1

Advanced TCP/IP Data Logger

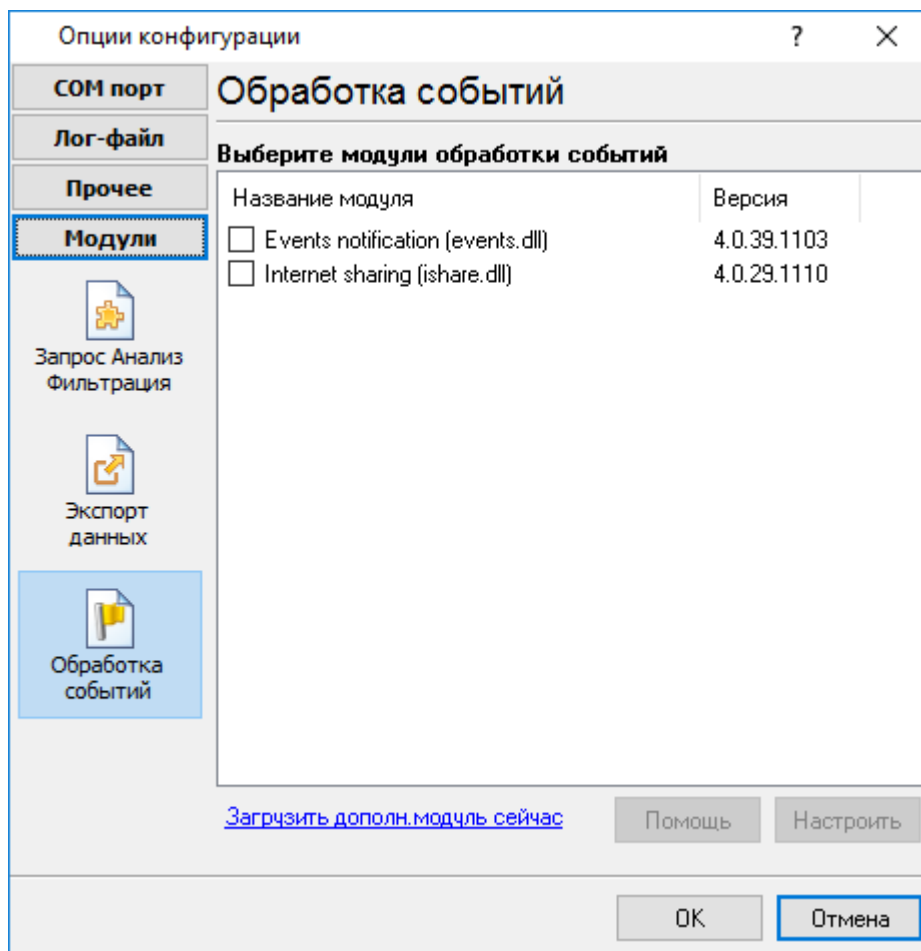
- (, ,) - ()
- - ;
- - ;
- - , Excel ;
- (. 5.1.3) - Advanced TCP/IP Data Logger. , " - " "



. 14.



. 15.



. 16.

"OK".

5.4.2 OPC

Advanced TCP/IP Data Logger

OPC.

Data Logger

OPC

Advanced TCP/IP

(. 17).

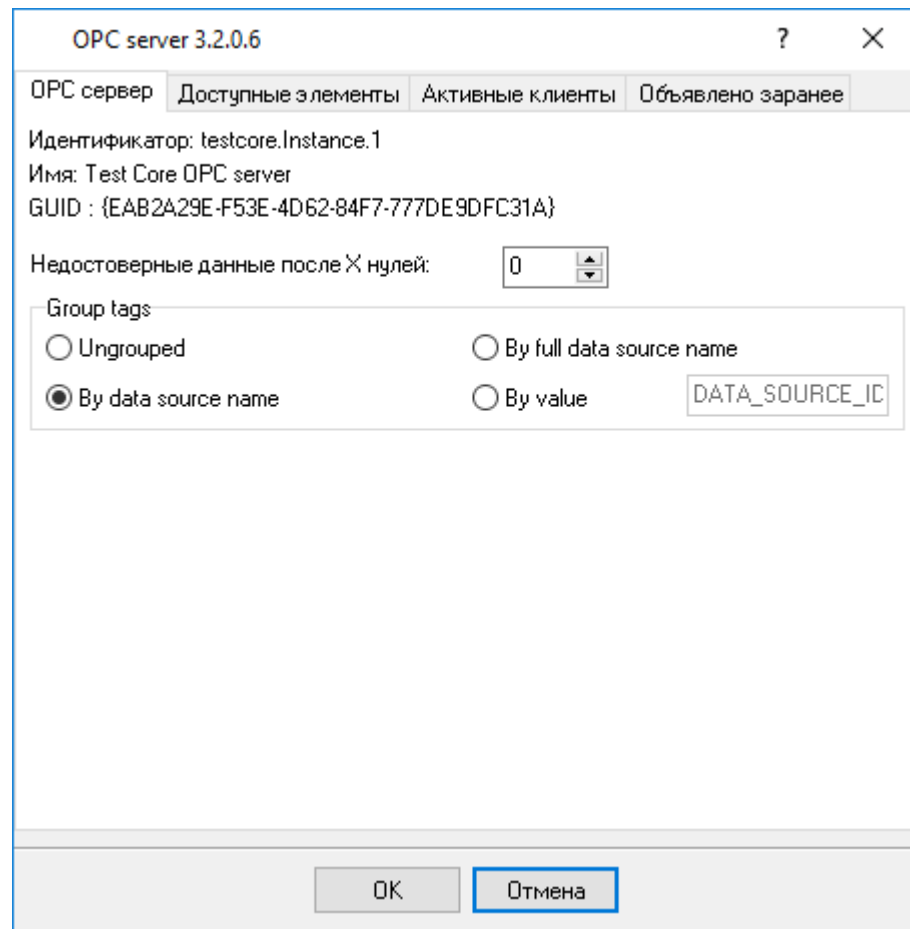
OPC

OPC Core Components Redistributable

www.opcfoundation.org (

OPC

OPC



. 17.

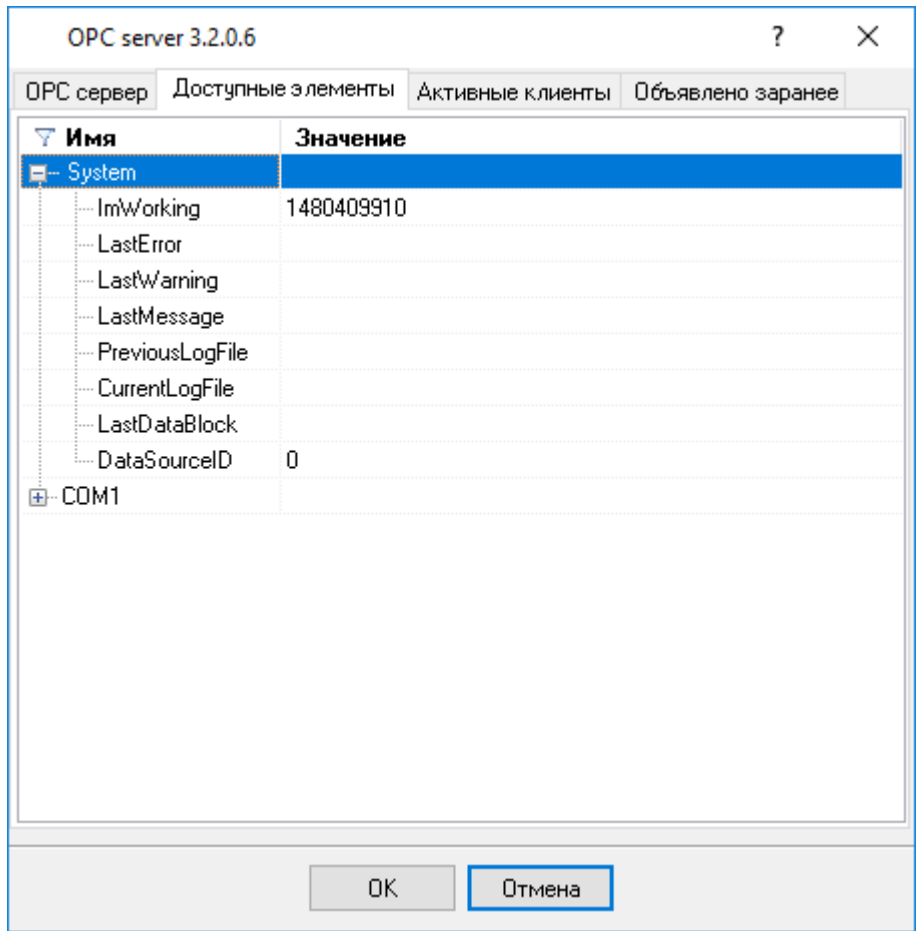
OPC

Advanced TCP/IP Data Logger,

OPC

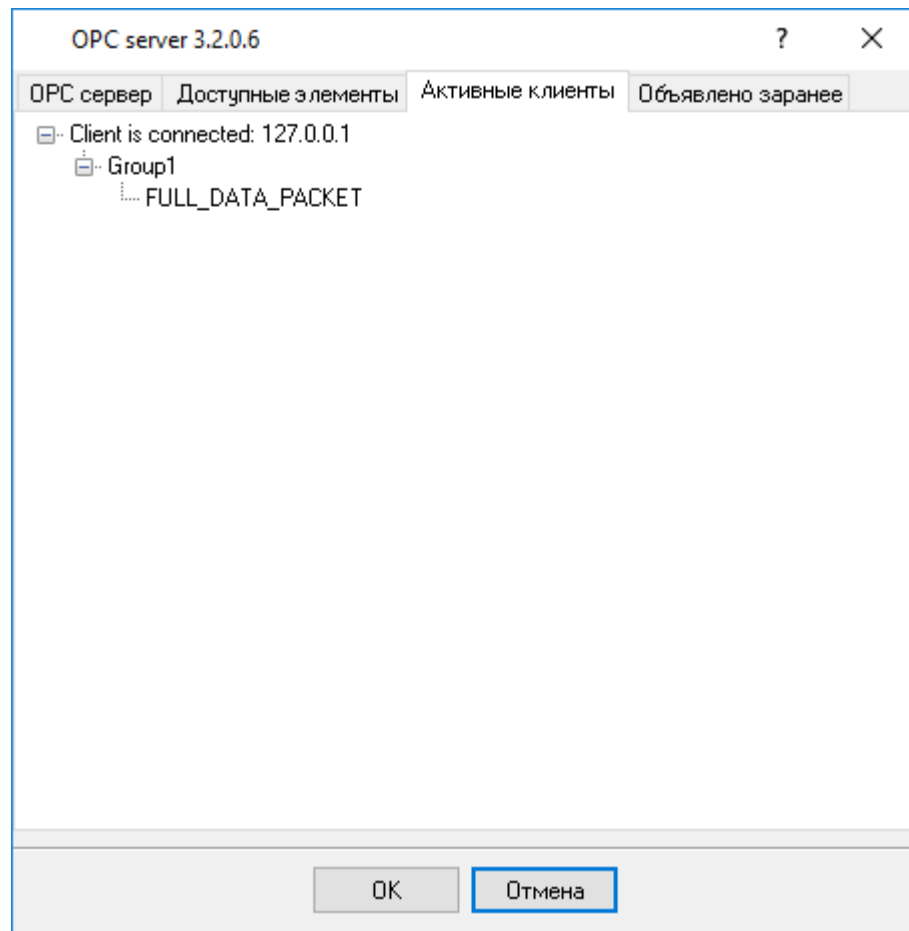
(. 18).

OPC



. 18.

OPC



. 19.

Advanced TCP/IP Data Logger

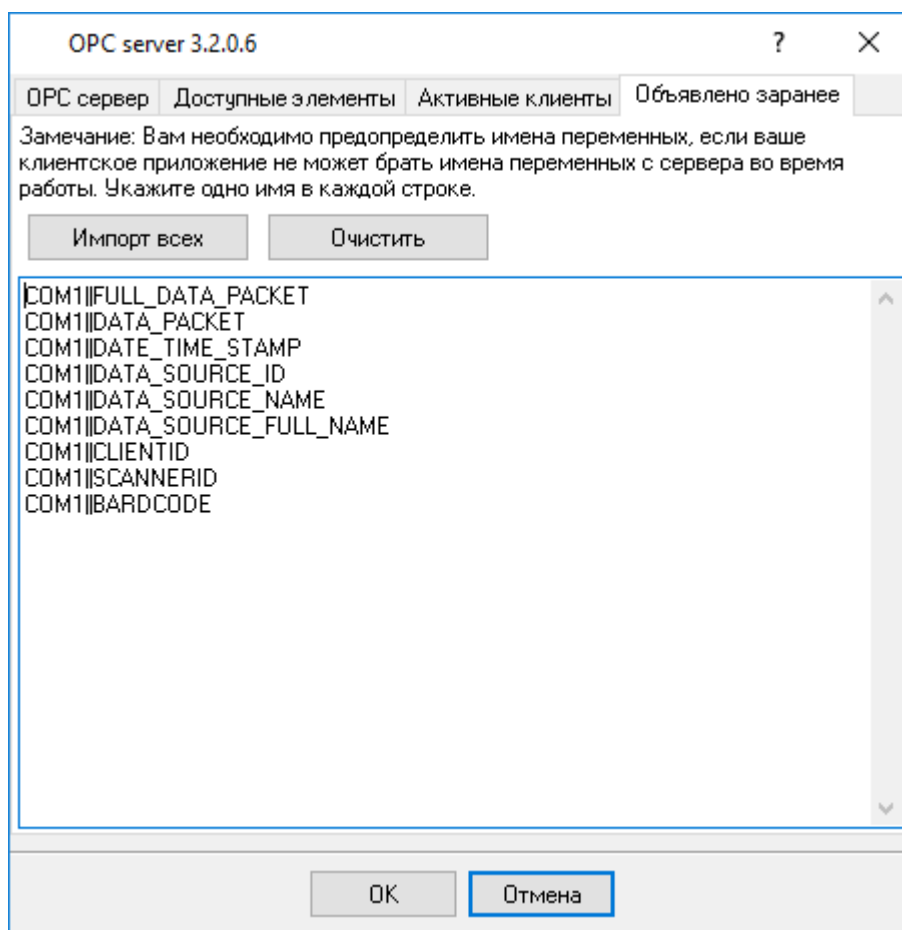
"

". Advanced TCP/IP Data Logger

OPC

(. 20).

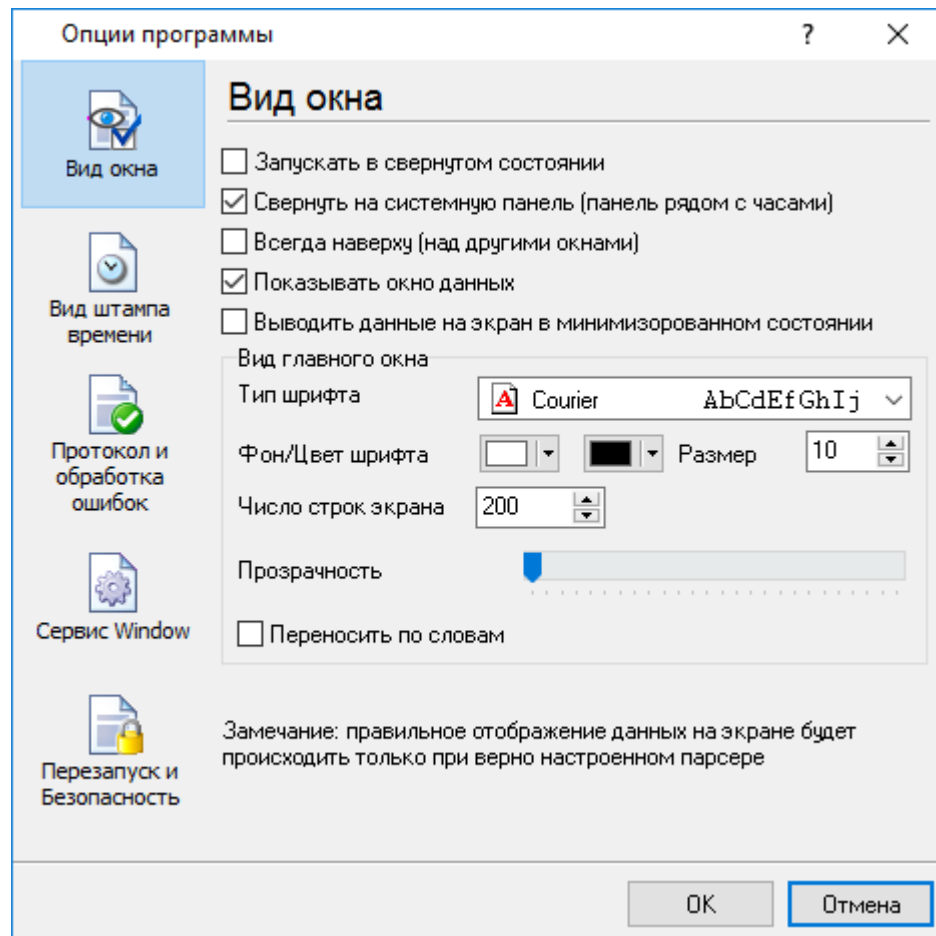
OPC
OPC



. 20.

5.5

5.5.1



. 21.

" (. 21)

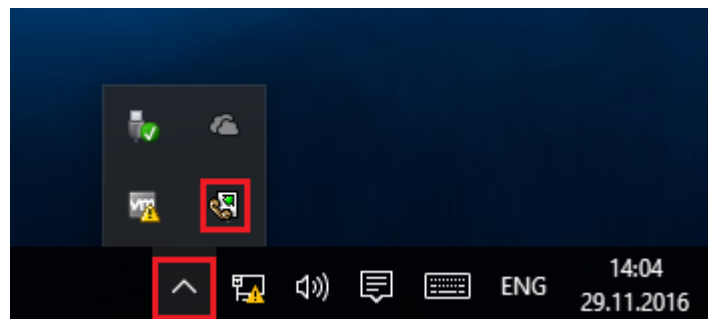
:

-

Advanced TCP/IP Data Logger

(. 22)

;



. 22.

-

(. 22) -

Advanced TCP/IP Data Logger

;

;

-

/

.

.

-

,

;

-

(

,

,

);

-

.

;

- Windows 2000

.

-

,

-

.

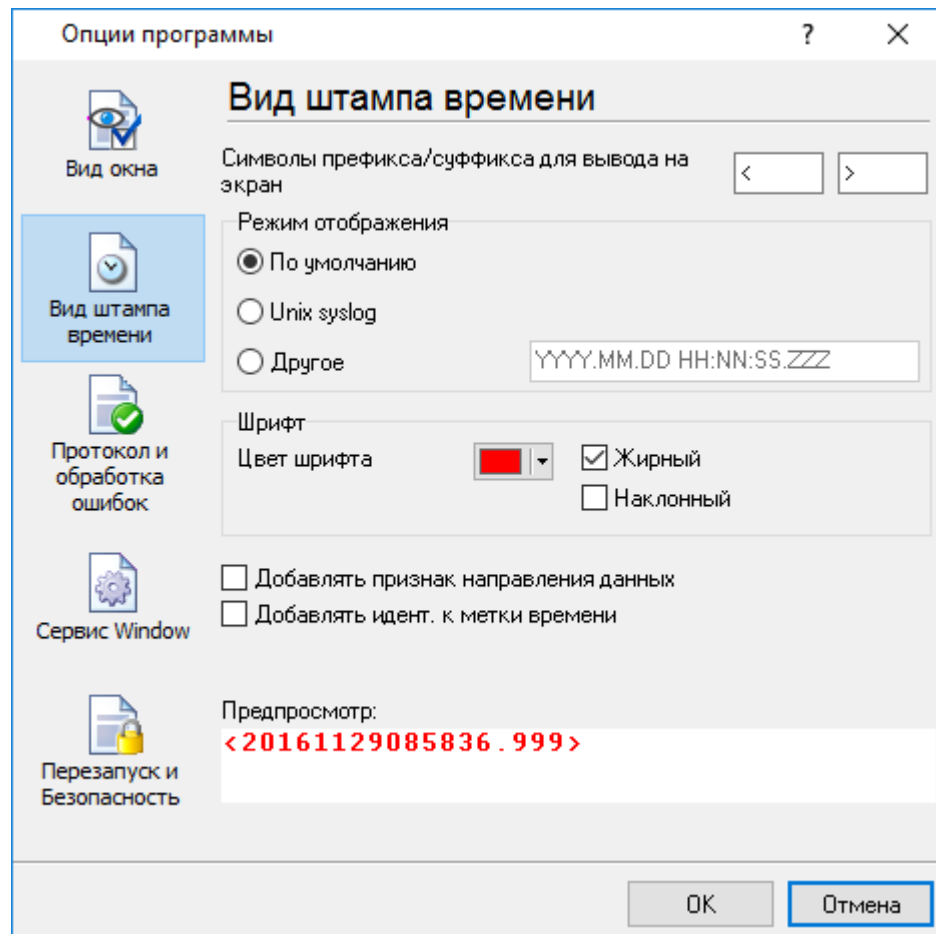
-

,

.

5.5.2

(. 23)



. 23.

/

21

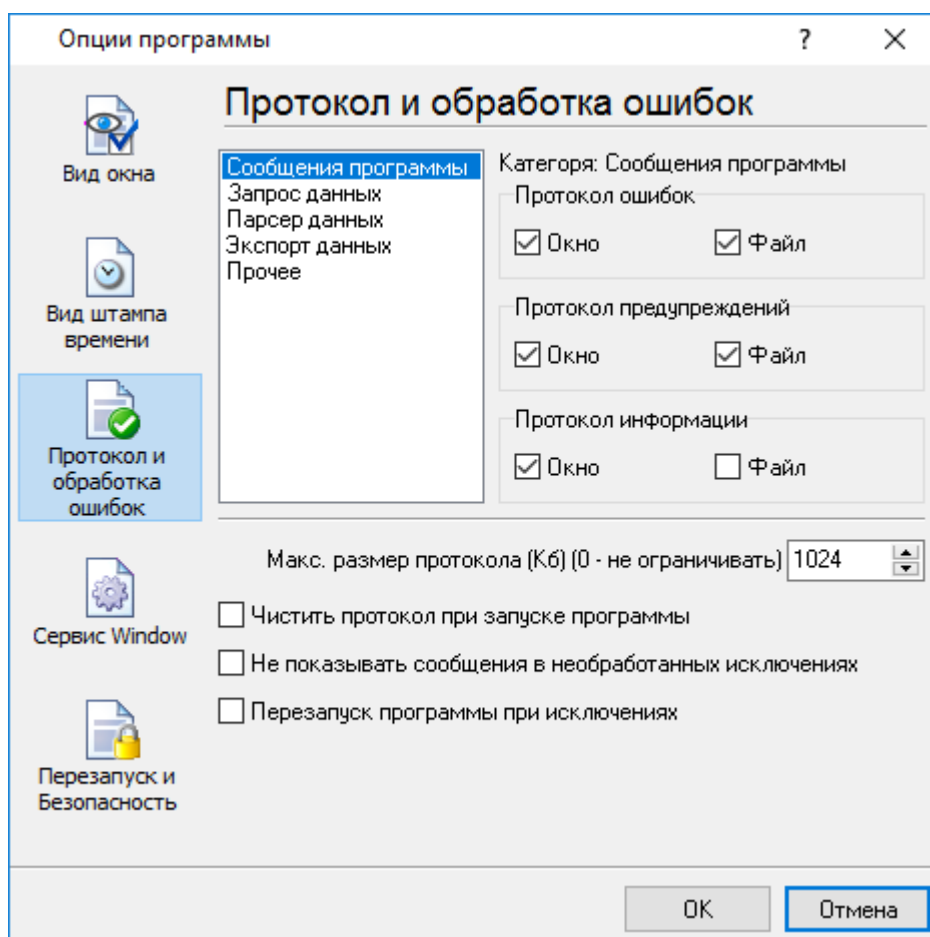
TX

RX

, COM1.

5.5.3

.log.



.24.

Advanced TCP/IP Data Logger

3-

-
-
-

-
-
-
-

Advanced TCP/IP Data Logger

5.5.4
5.5.4.1

Windows 2000

() Windows :

-
-
-
-

Windows 2000

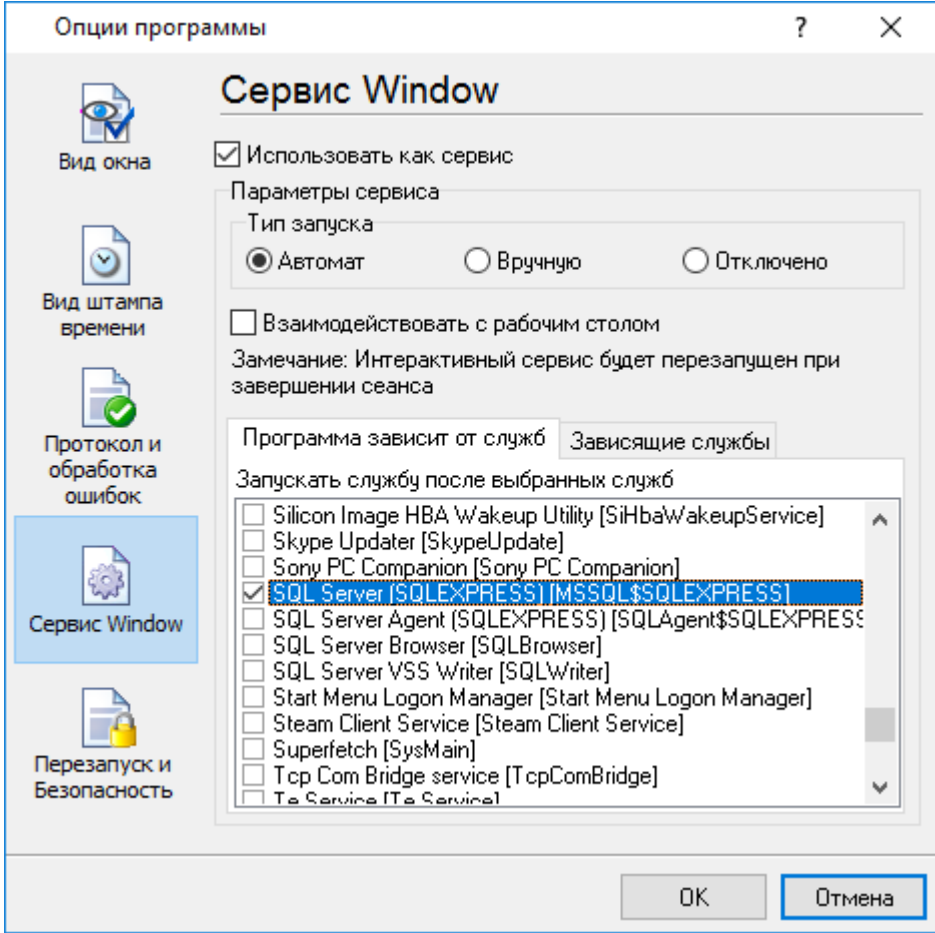
() ;

() ;

Windows Vista

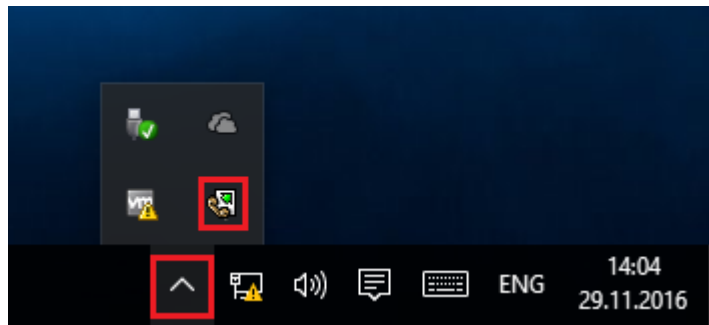
(elevated)

Windows" (. 25).



. 25.

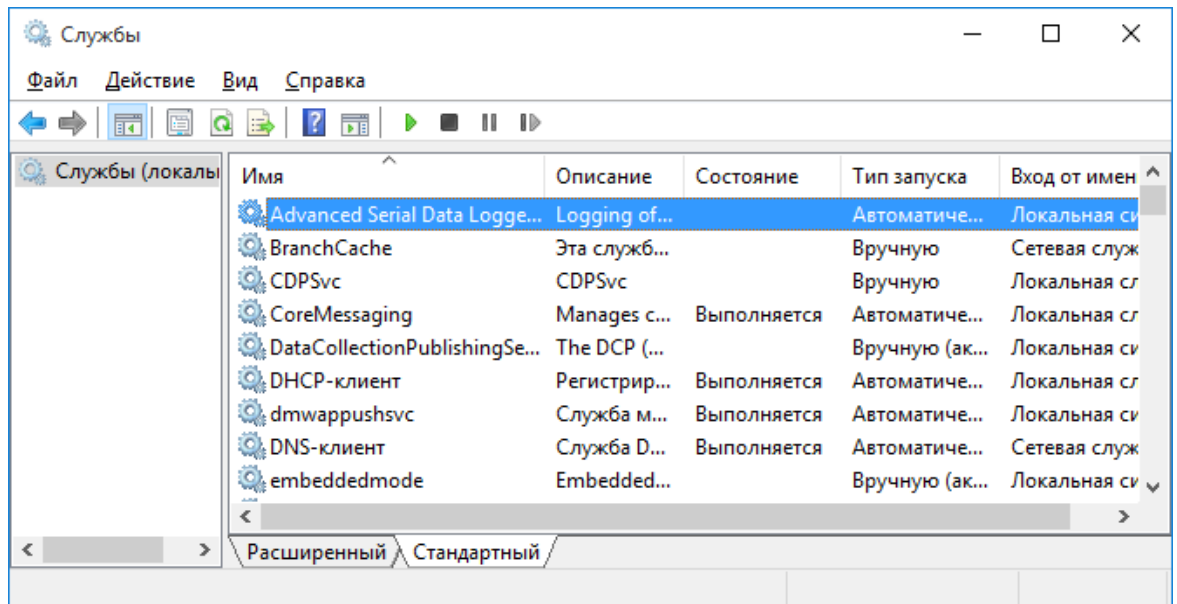
1. - Windows
 2. - ; " " ;
 3. - " (. 26).
- " , . . Windows



. 26.

Advanced TCP/IP Data Logger, " (. 25)

(. 27).

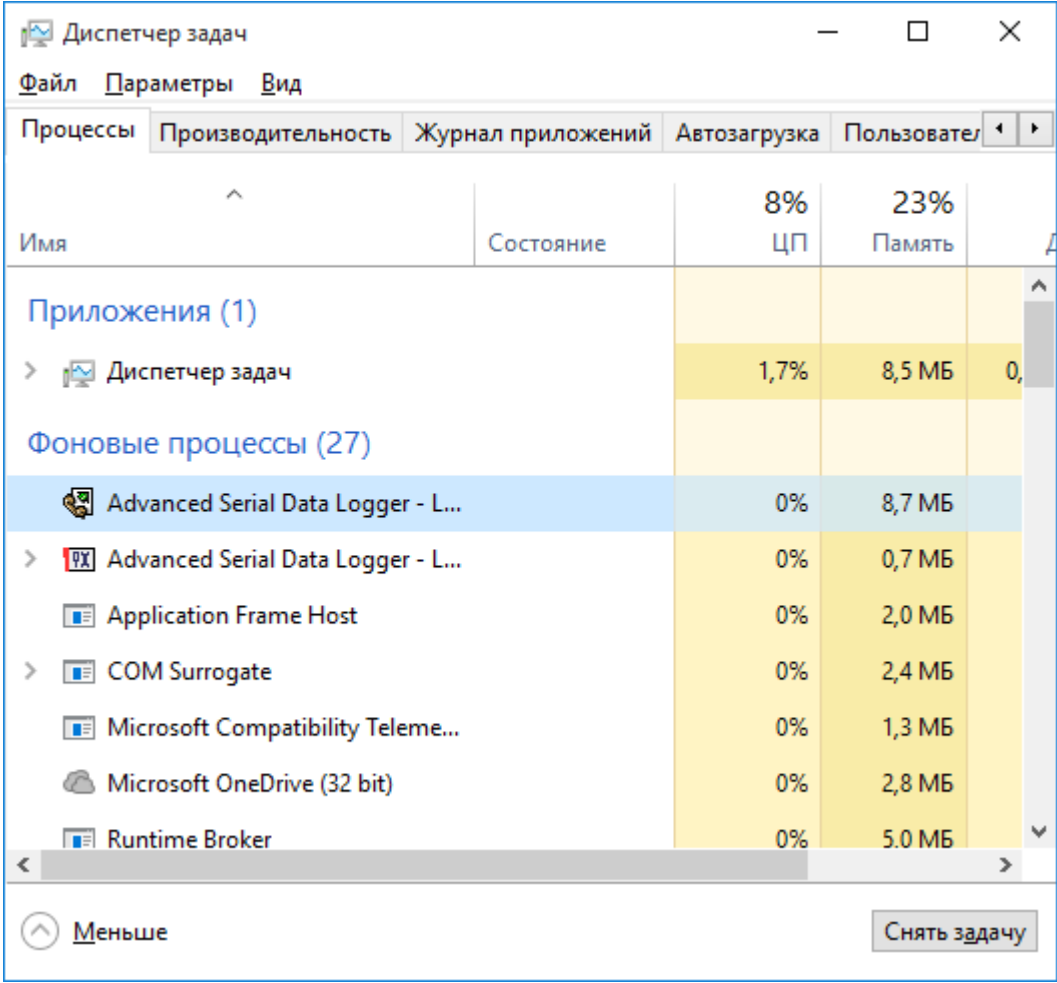


. 27.

(Windows 2000)

(. 28). Advanced TCP/IP Data Logger

Advanced TCP/IP Data Logger,
svany.exe



. 28.

apidlogsvr.exe

- /? -
- /I -
- /A -
- /D -
- /R -

5.5.4.2

Windows Vista

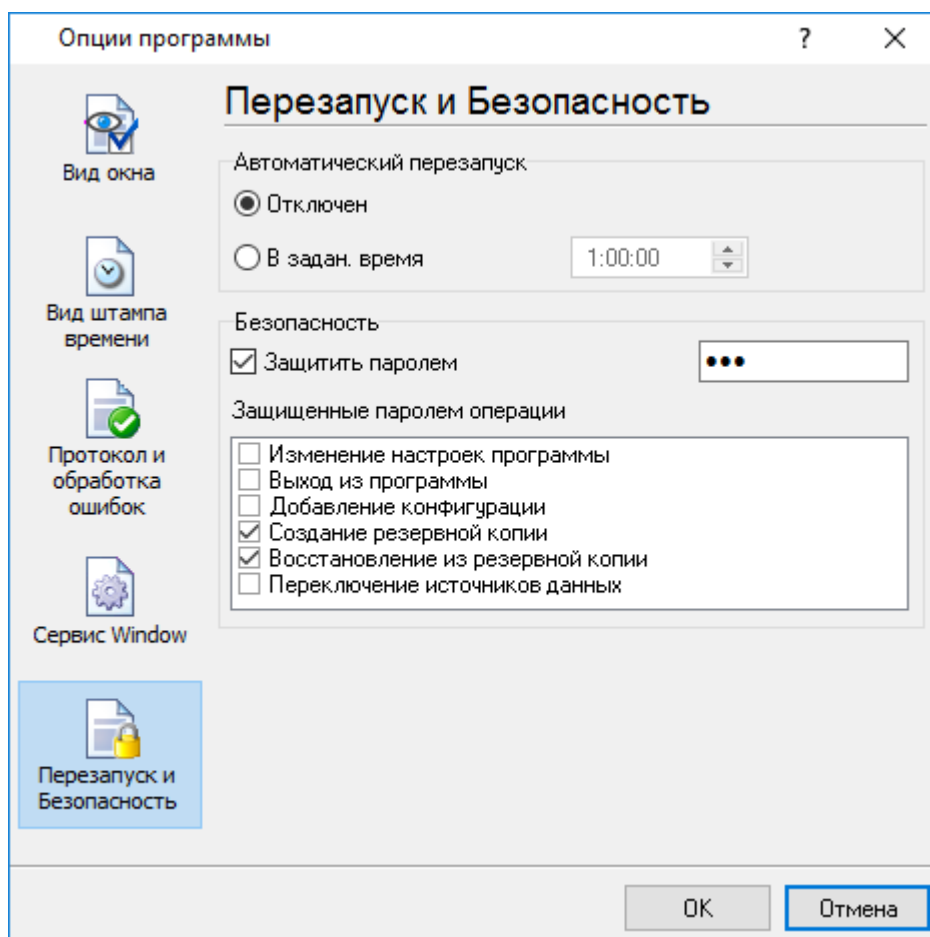
Windows Vista

Windows.

- : Interactive Services Detection
 - : UIODetect
 - : UIODetect.exe
 - :
 - : %windir%\system32\UIODetect.exe
 - :
1. Home Basic:
 2. Home Premium:
 3. Business:
 4. Enterprise:
 5. Ultimate:

5.5.5

(. 29).



. 29.

" " ,

6

?

6.1

SoftIce

support@aggsoft.ru