

SNMP Data Logger

1 **1**

1 SNMP Data Logger 1

2 2

2 **3**

1 3

2 4

3 4

4 5

3 **5**

1 5

2 5

4 **6**

1 6

2 8

3 10

4 11

..... 11

..... 12

..... 14

..... 16

..... 17

- 19

- 19

- 21

..... 23

..... 23

..... 23

OPC..... 26

5 29

6 30

7 30

8 **Windows NT/2000/XP/Vista** 32

..... 32

Windows Vista 35

9 36

10 37

5	?	II
1		37
	 37

- Windows, x32,
- x64.
- Windows. SNMP Data Logger Windows
- NT/2000/XP,

-
-

: <http://www.aggsoft.ru/>
: <http://www.aggsoft.ru/snmp-data-logger/>

1.2

ASCII - ASCII -

Windows
ASCII. ASCII *.TXT (

README.TXT).

Binary File - ASCII (0 255).

Bytes () -

Bit () - : 0 1. 8
8 ()

Cable () -

Internet () - TCP/IP

PC () - Personal Computer ()).

Ports () -

Protocol () -

(Log file) - (.log) —

2

2.1

Copyright © 1999-2010 AGG Software.
All Rights Reserved

1. SNMP Data Logger

2.

3. SNMP Data Logger

4.

5. SNMP Data Logger
sales@aggsoft.ru

6. SNMP Data Logger

SNMP Data Logger

7. **SNMP Data Logger**

"AS IS".

8.

9.

SNMP Data Logger

10.

SNMP Data Logger
SNMP Data Logger.

2.2

shareware-

_____ [4]

- 21 ;
- ;
- 100 ;

2.3

shareware-

_____ [3]

Internet, _____

2.4

SNMP Data Logger	support@aggsoft.ru
	support@aggsoft.ru
	sales@aggsoft.ru

3

3.1

- Windows 95 (comctrl.dll,);
- Windows 95 OSR2;
- Windows 98;
- Windows Me.

- Windows NT4 (SP4).
- Windows 2000 Professional;
- Windows 2000 Server;
- Windows XP x86 x64;
- Windows 2003 Server x86 x64;
- Windows Vista () x86 x64.

Internet Explorer 5.0

3.2

SNMP Data Logger.

Logger" , SNMP Data Logger

"/Programs Files/SNMP Data

SNMP Data Logger

4

4.1

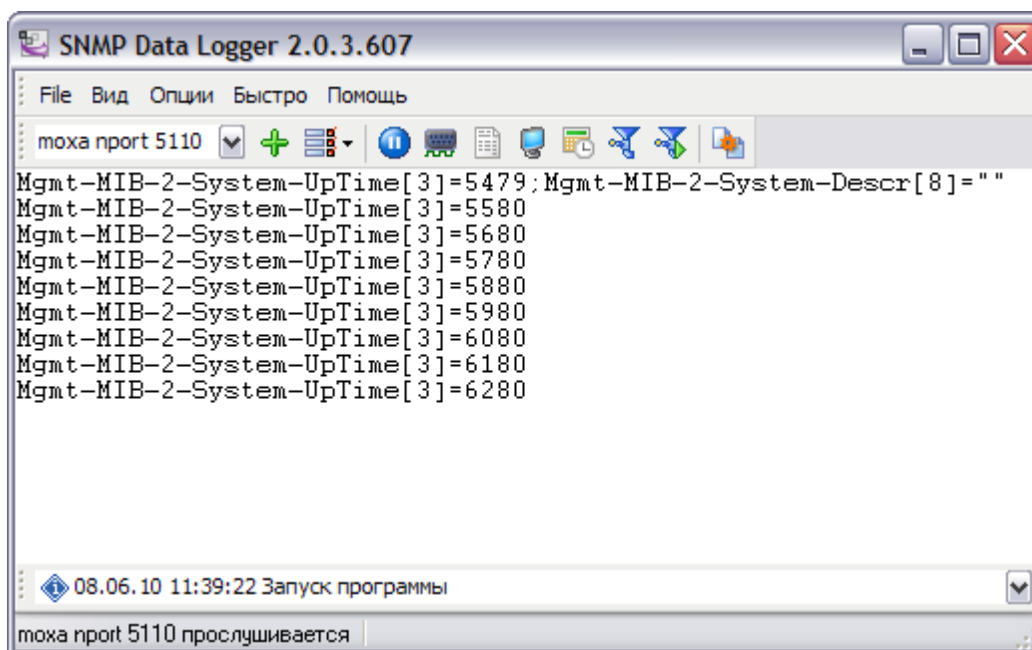
SNMP Data Logger

SNMP Data Logger

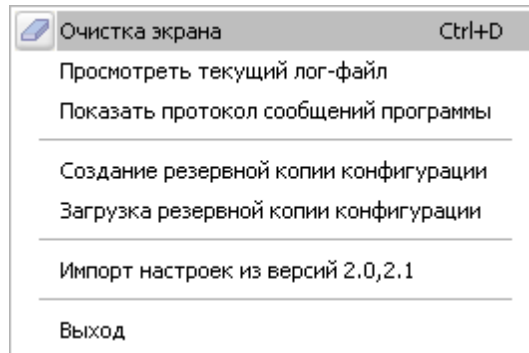
" "

(.1),

8 (" / ..."),
" (.2)



.1



.2. " "

C:\. ,
 _____ 8

1-2-3-4-5

1.

" _____ " 23

2.

" " SNMP "SNMP"

3.

" "

4.

" _____ " 23

5.

SNMP Data Logger

SNMP Data Logger

4.2

_____ [21] - _____ [19] _____

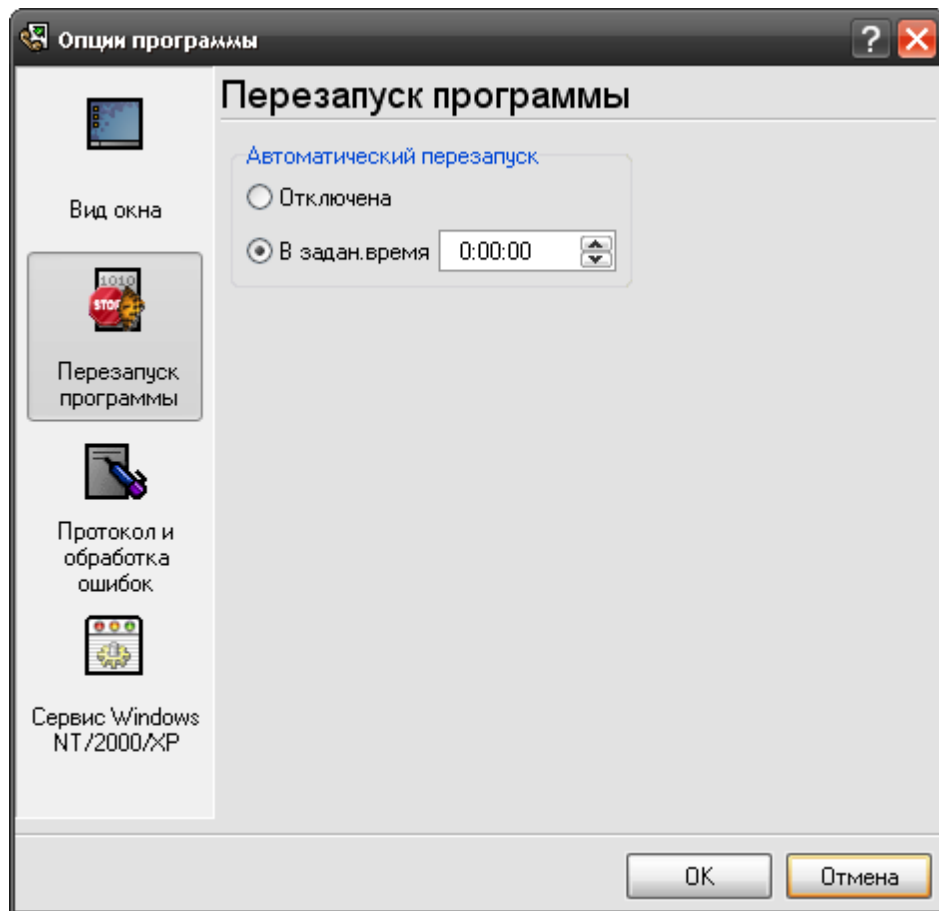
(____.1 [6]).

SNMP Data Logger "_____ [17]", _____ [29].

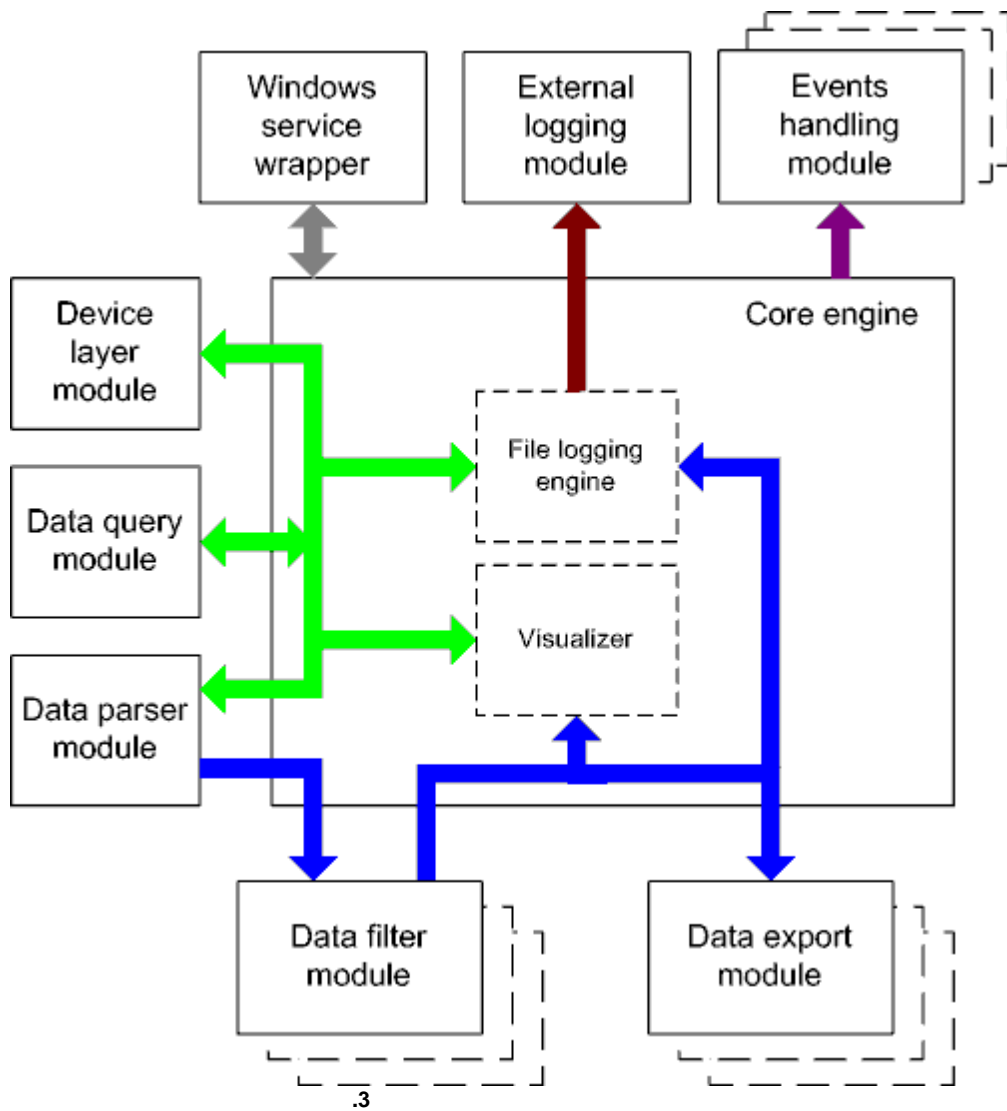
Logger _____ [23] (plug-ins), SNMP Data Logger. SNMP Data

"_____ [23]".

_____ [30] (____.1 [6]), _____



4.3



- - ().
- - ().

• Core engine -

- Device layer module -
- Data query module -
- Data parser module -
- Data filter module -
- Data export module -
- Visualizer -
- File logging engine -
- Windows service wrapper -
- External logging module -
- Events handling module -

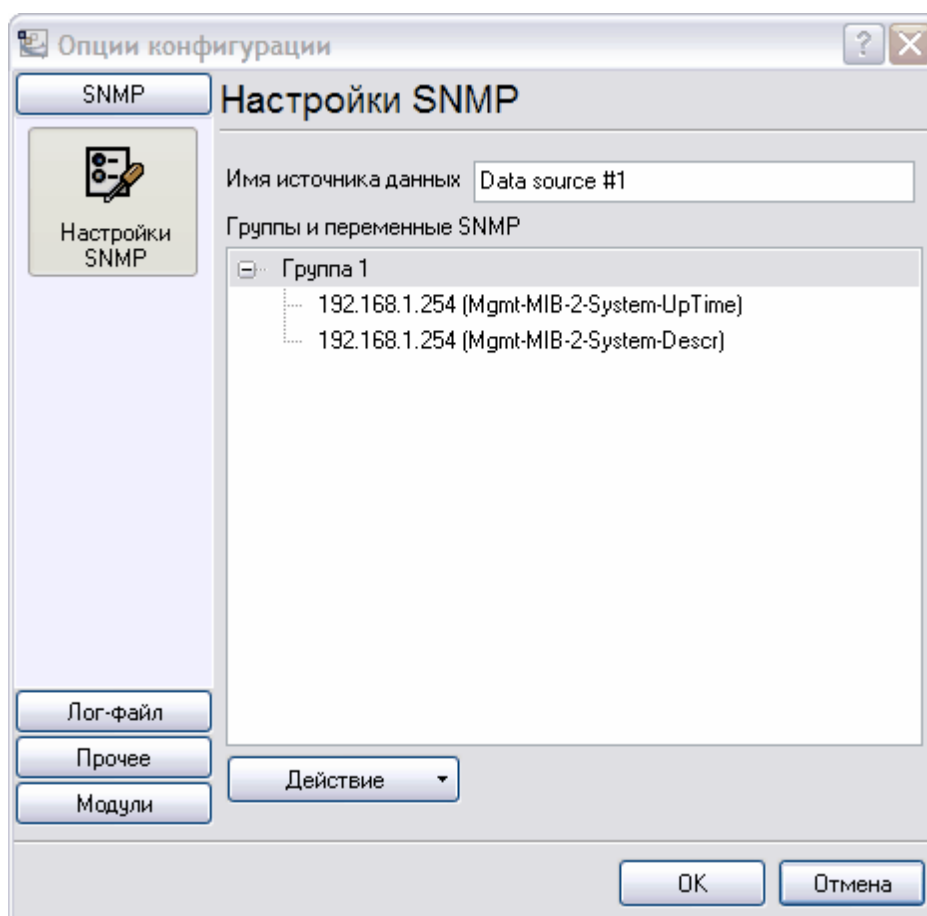
4.4

4.4.1

SNMP, :

1. , . 2,
2. ; ,
3. " _____ 14", ;
4. , . 1, _____ 14. . 4;

4.4.2



. 1.

. 1.

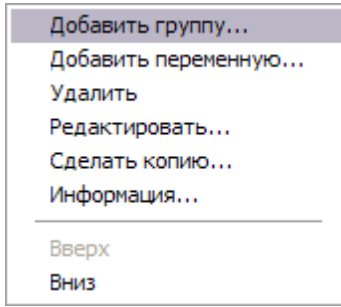
ASCII.

- Data source #<

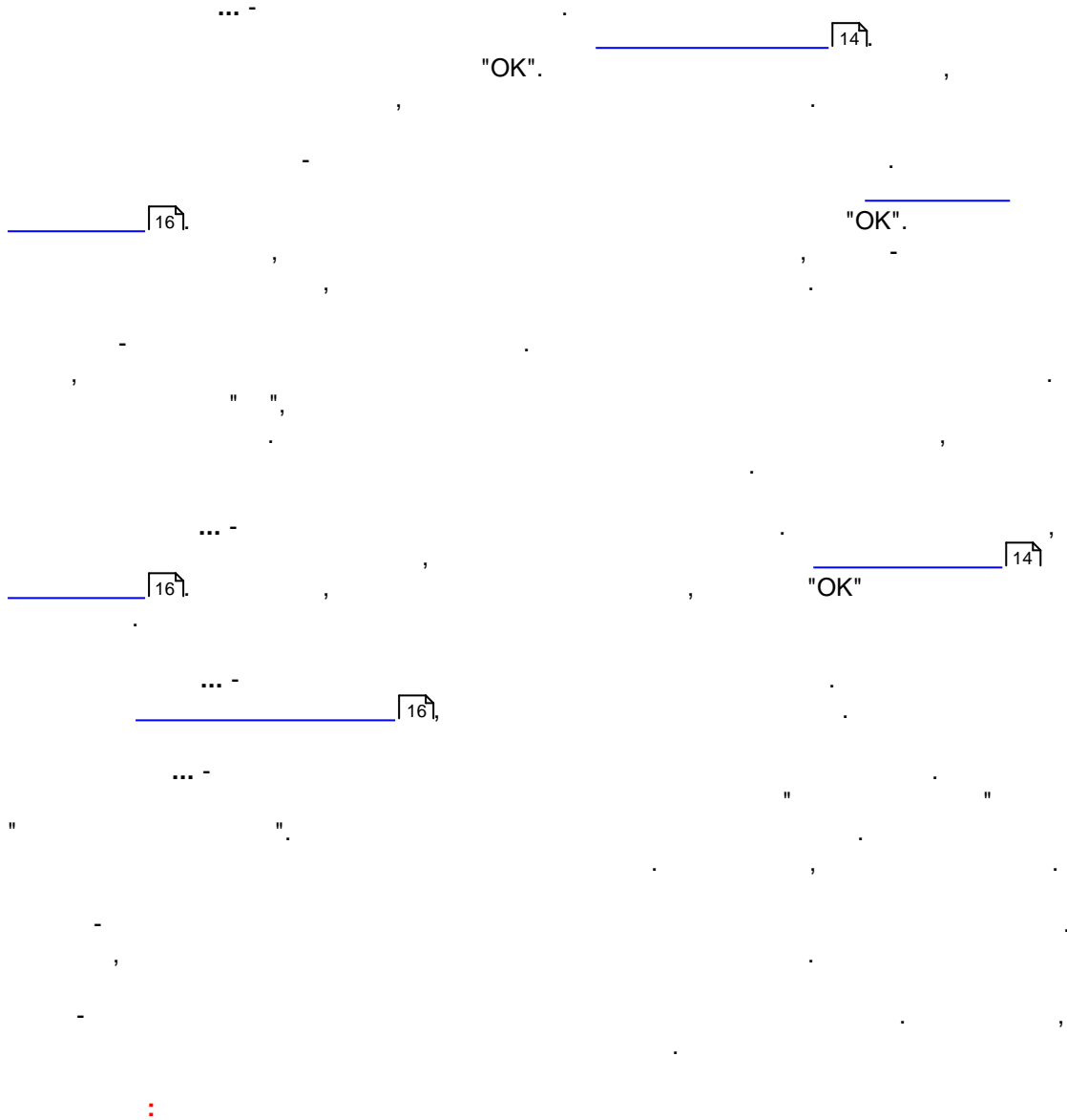
>.

. 2 (

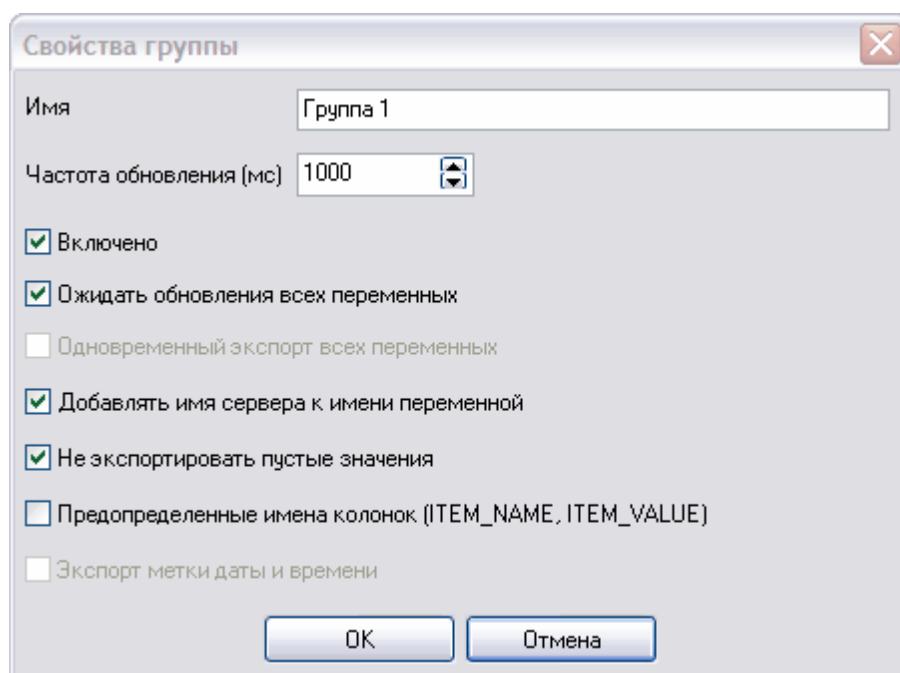
).



. 2.



4.4.3



. 3.

< > - Group

SNMP- () - 1000, . . 1

SNMP-

2

(

)

(ITEM_NAME, ITEM_VALUE) -

ITEM_NAME[< >]="< >"; ITEM_VALUE[< >] =
 "< >".

ITEM_NAME, ITEM_VALUE.

ITEM_NAME[256]=".iso.org.dod.internet.private.enterprises.2162.1.2.0";ITEM_VALUE[8]
 ="computerName"
 ITEM_NAME[256]=".iso.org.dod.internet.private.enterprises.2162.1.3.0";ITEM_VALUE[8]="1"

ITEM_DATETIME_STAMP[7]=01.03.2010 15:52:00;ITEM_NAME[256]=".iso.org.dod.internet.
 private.enterprises.2162.1.2.0";ITEM_VALUE[8]="computerName"
 ITEM_DATETIME_STAMP[7]=01.03.2010 15:52:00;ITEM_NAME[256]=".iso.org.dod.internet.
 private.enterprises.2162.1.3.0";ITEM_VALUE[8]="1"

4.4.4

Свойства переменной

Сервер (имя или IP) 192.168.1.254

Порт 161 Ожидание ответа (мс) 300

Сообщество public

Получить переменные Базовый OID .1.3.6.1.2.1

Переменная .1.3.6.1.2.1.1.3.0

Тип данных Time ticks

Имени для экспорта Mgmt-MIB-2-System-UpTime

OK Отмена

. 4.

(IP) - IP- URL- (: www.aggsoft.com), IP-

(: 192.168.1.1). 10 , .

- localhost.

- , ().

- 161.

(Community) - ("public"

). - public. : 10

(.).

OID - SNMP "

" .1.3.6.1.2.1", " .

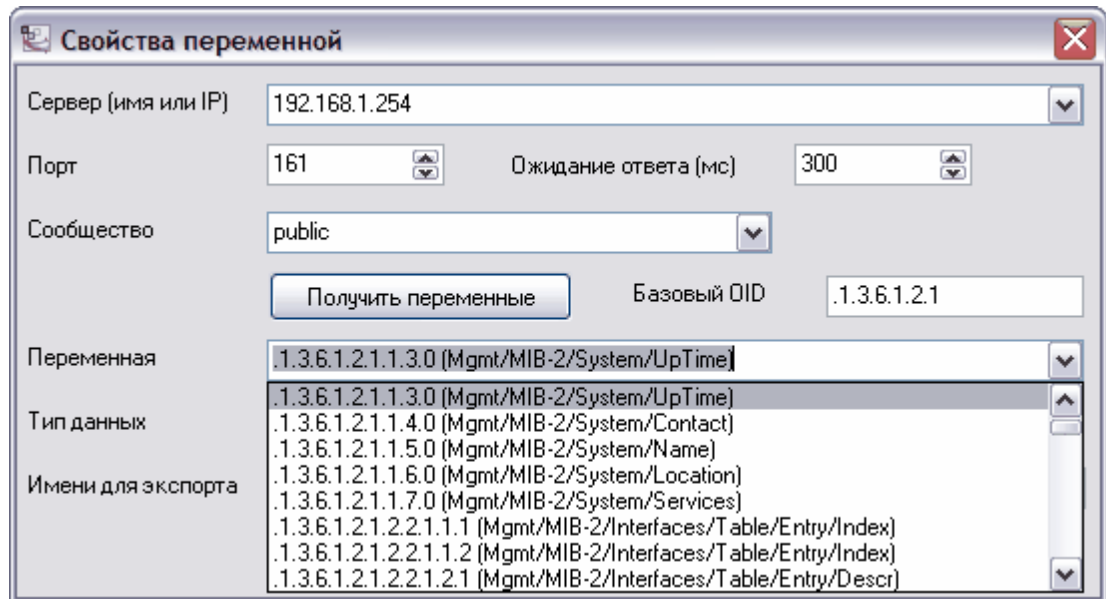
MIB-II. MIB

(Management Information Base) _____.

- SNMP.

5.
(, .iso.org.dod.internet.private.enterprises).

SNMP.



5.

4.4.5

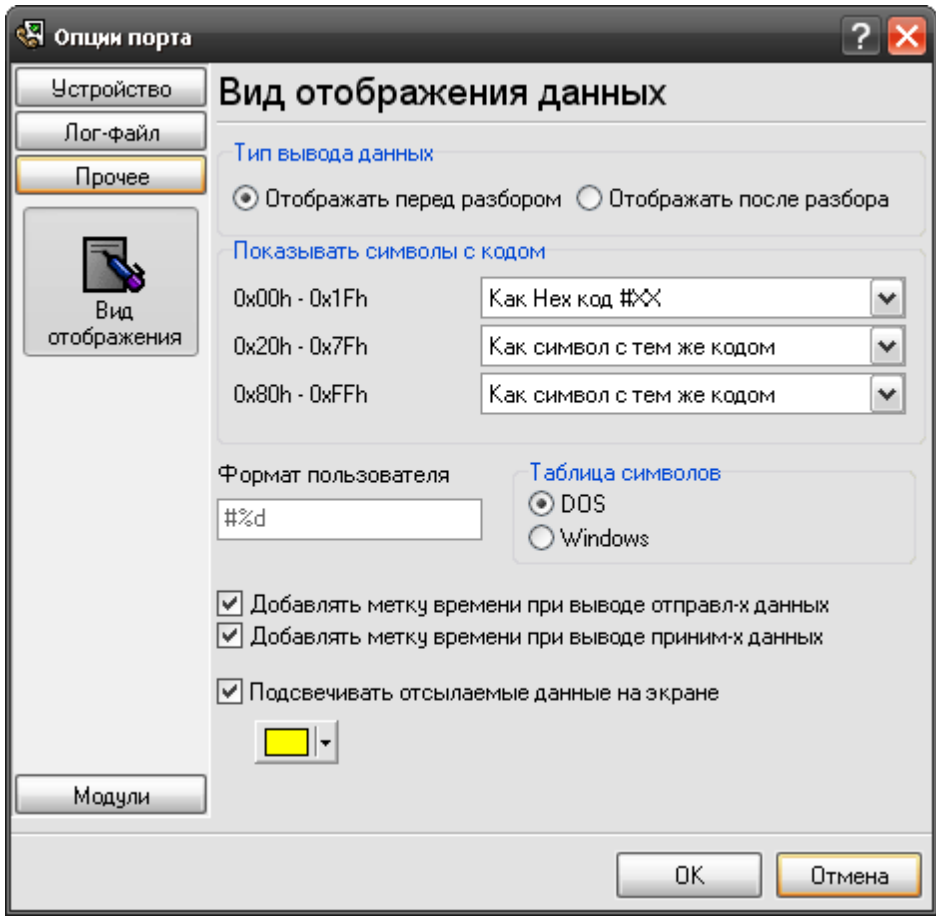
(.1.6)

2

(.7):

1.

2.



.7.

- 1.
- 2.
- 3.
- 4.

" / "

:

Hex-

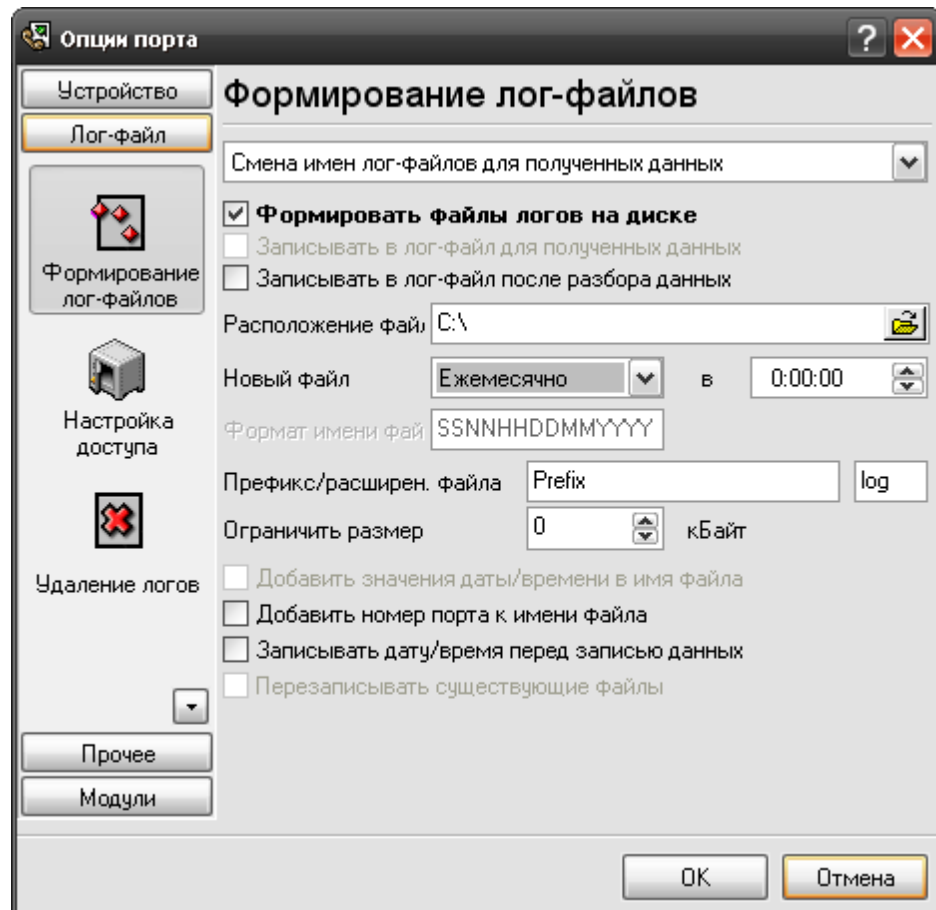
%d

, %x -

4.4.6

4.4.6.1

COM-



.8.

"OK".

SNMP Data Logger

"sample",

"log ",


```

yy - (00 - 99);
yyyy - (0000 - 9999);
h - (0 - 23);
hh - (00 - 23);
n - (0 - 59);
nn - (00 - 59);
s - (0 - 59);
ss - (00-59).

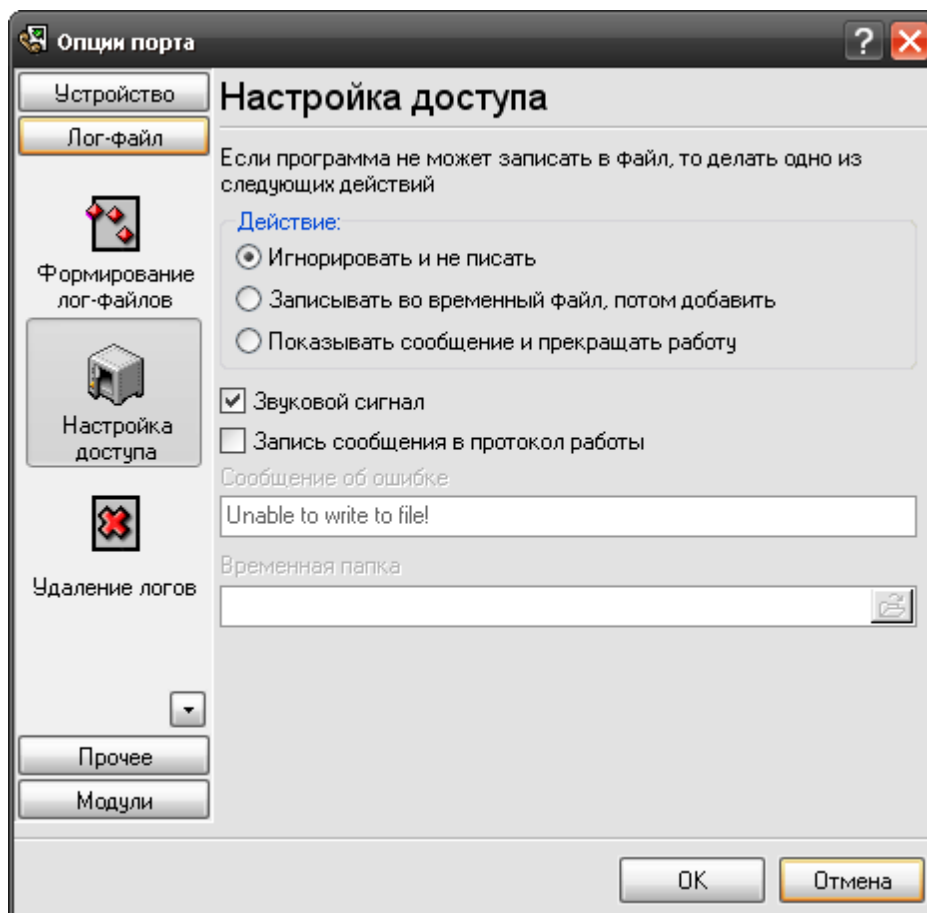
: "sample_log", "txt".

: = sample_log_, = txt ( !).
HHDDMMYYYY.

```

4.4.6.2

(.1).
Microsoft Office (, Microsoft Word), SNMP Data Logger



.9.

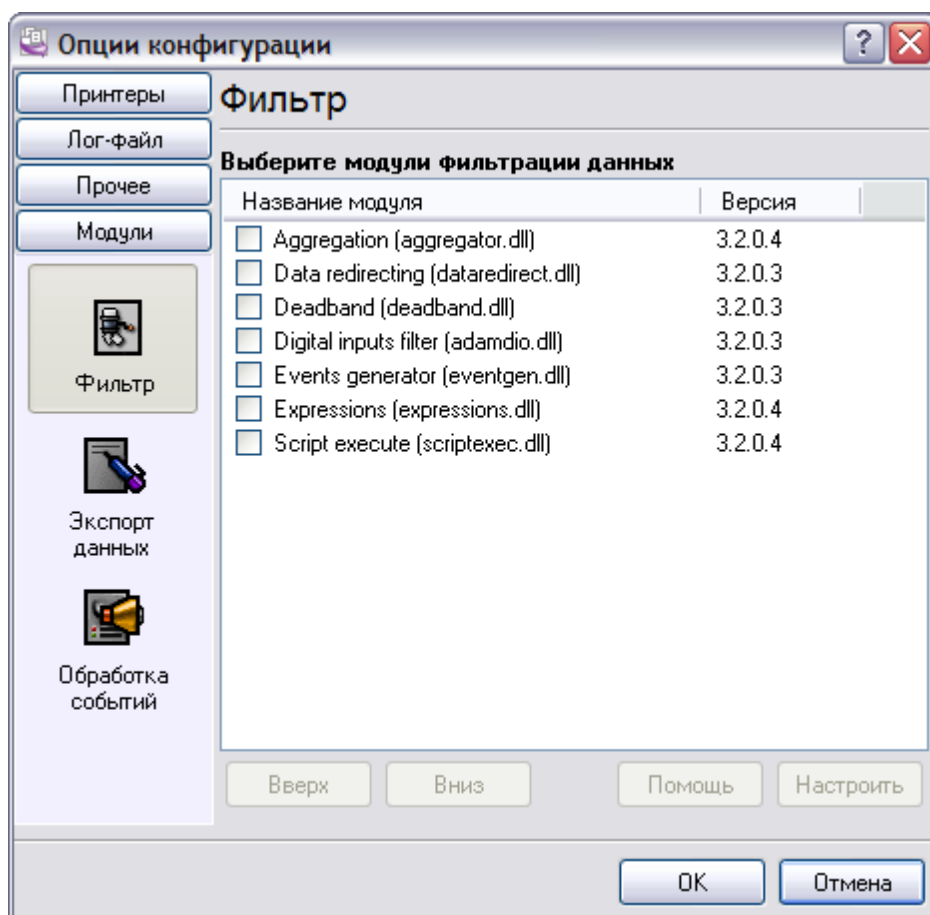
SNMP Data Logger

4.4.7

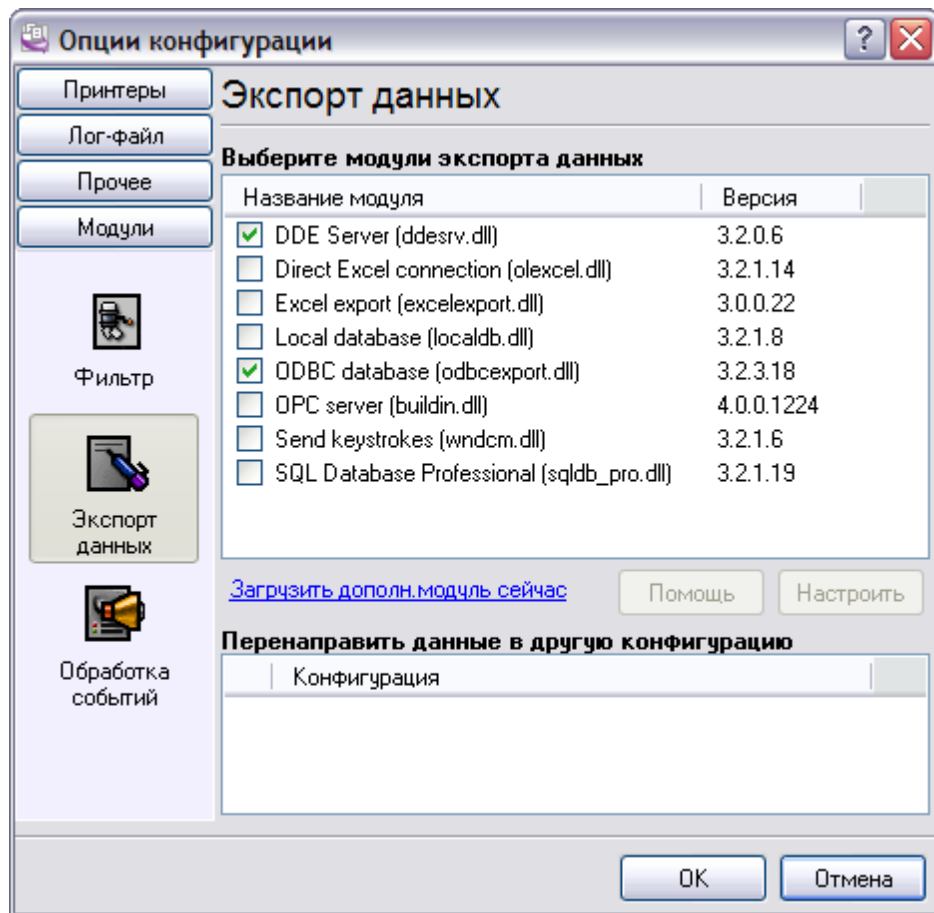
4.4.7.1

SNMP Data Logger

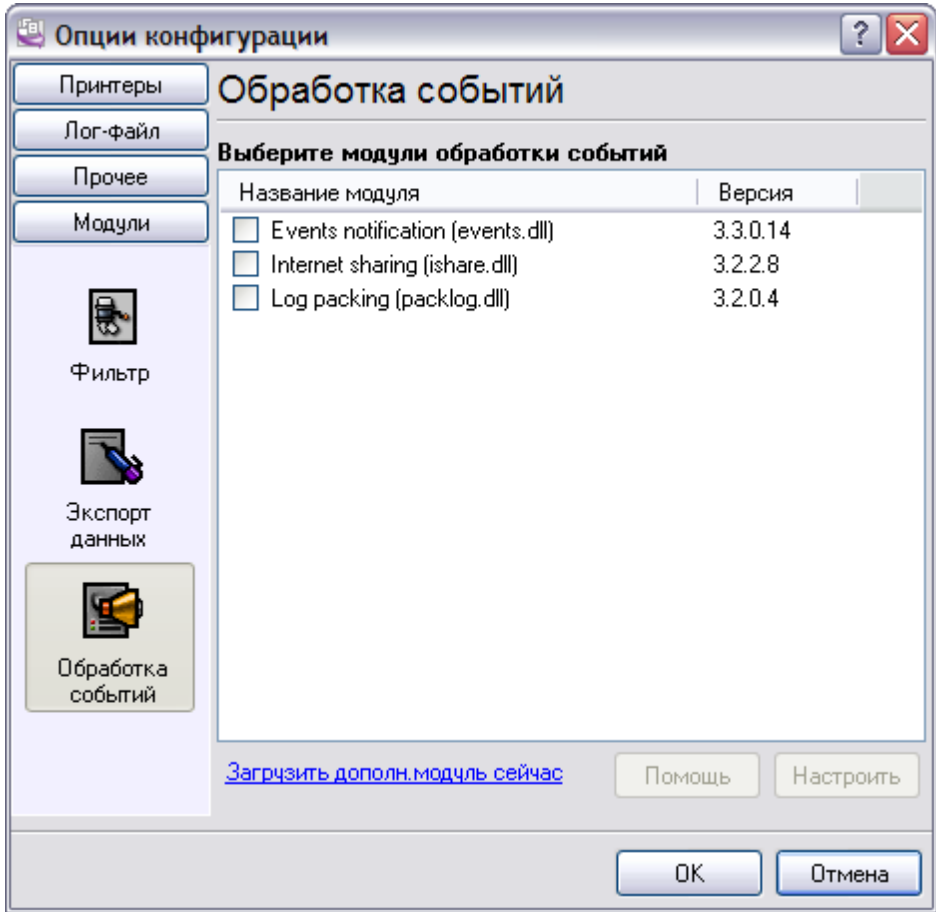
- - ;
- - SNMP Data Logger ;
: "Keystrokes", ; " DDE- ",
Dynamic Data Exchange, ODBC Database - ;
- (.12) - ;
SNMP Data Logger. - ;
(, " " " "), ;



.10



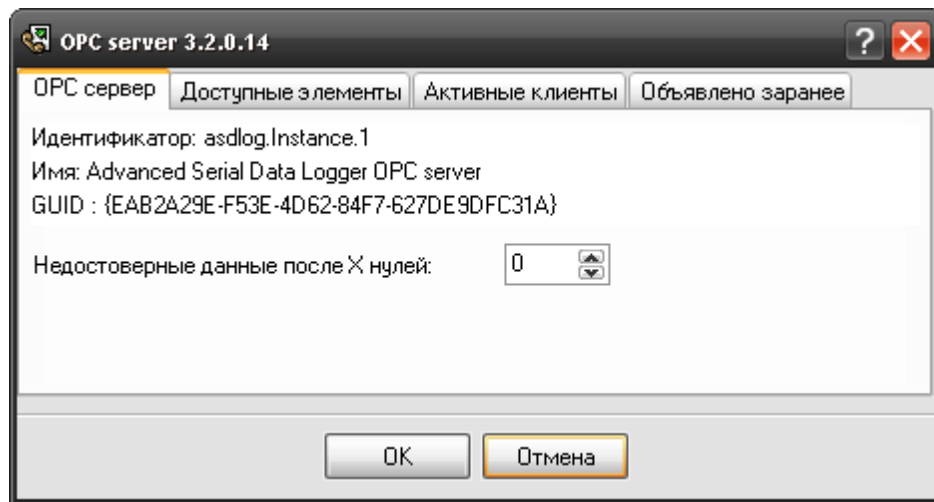
.11



.12

4.4.7.2 OPC

SNMP Data Logger OPC. SNMP Data Logger
OPC
(.1). OPC
OPC Core Components Redistributable www.opcfoundation.org (



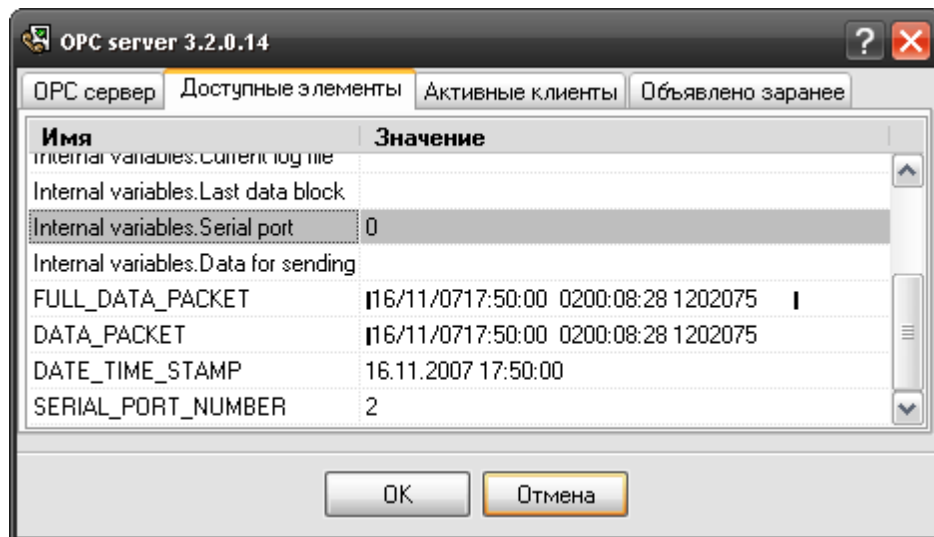
.1 OPC

SNMP Data Logger,

OPC

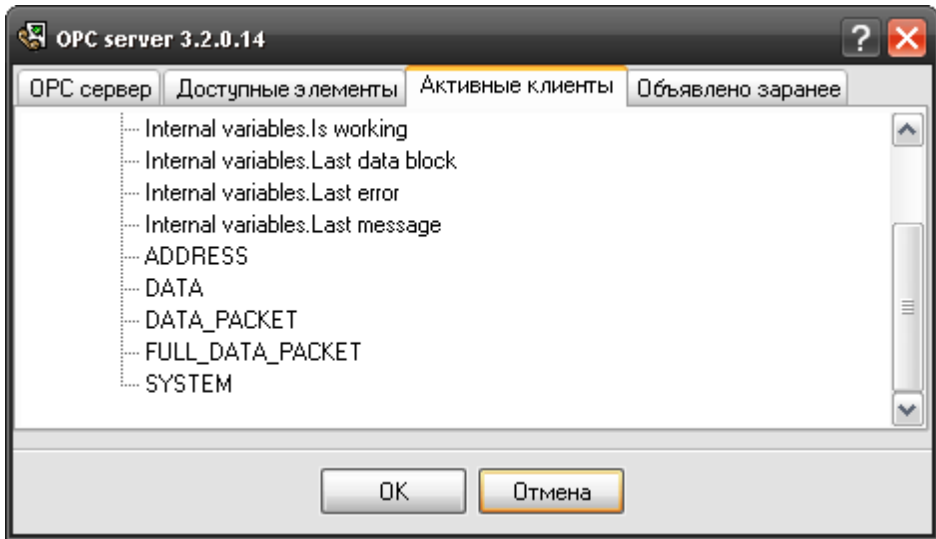
(.2).

OPC



.2

OPC



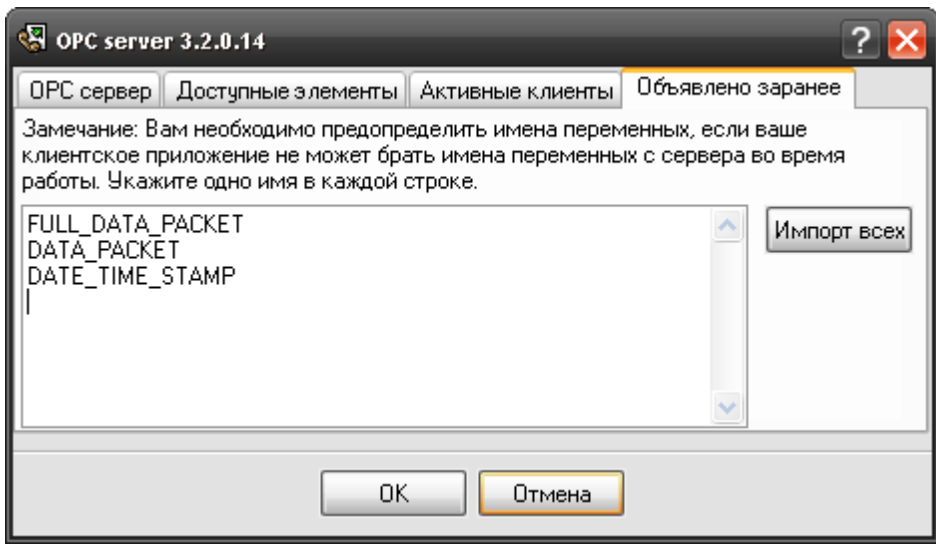
.3.

SNMP Data Logger " " . SNMP Data Logger

OPC

(.4).

OPC
OPC



.4.

-
- - Windows 2000 Windows XP
-



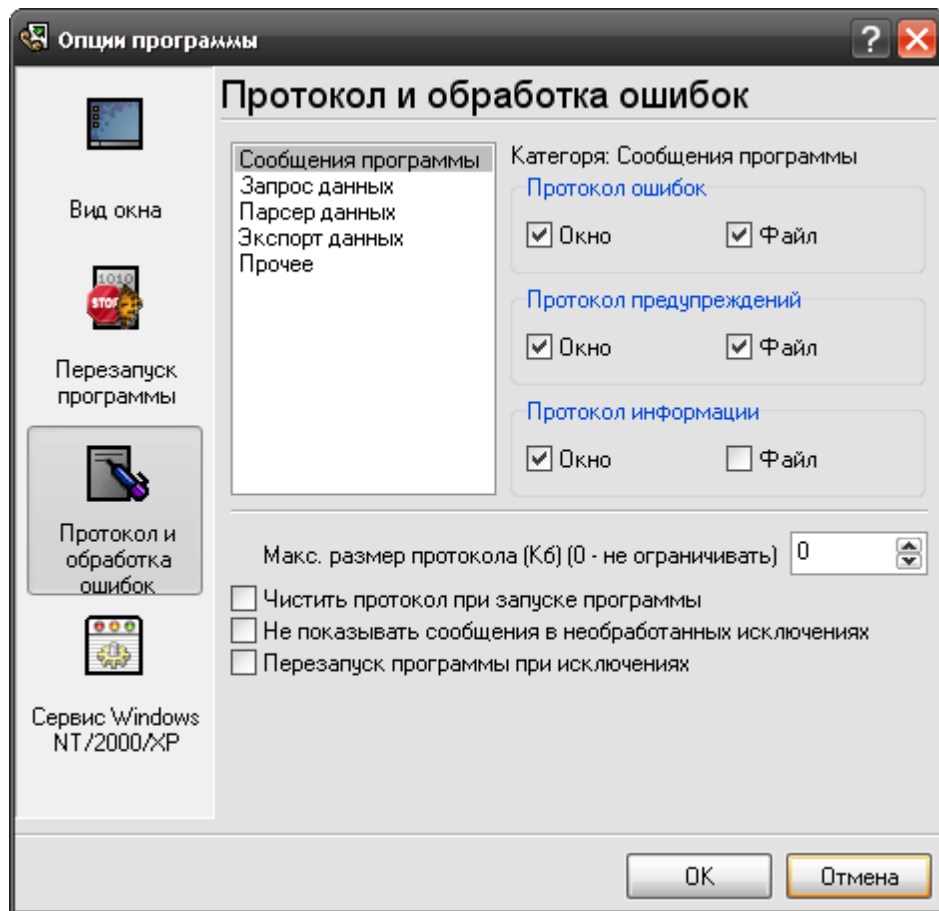
4.6

" " ' .

4.7

(). " ' (.1). +

.log.



.1

SNMP Data Logger

3-

:

•

•

•

•

•

•

•

/

SNMP Data Logger

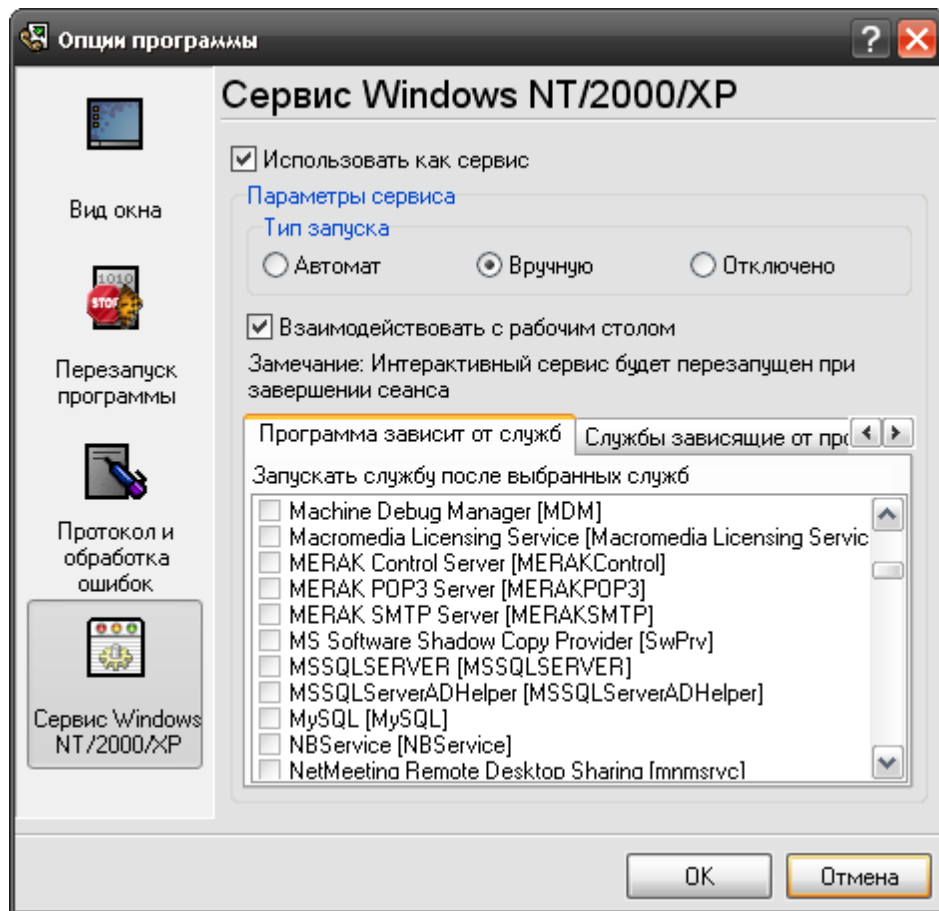
4.8 Windows NT/2000/XP/Vista

4.8.1

Windows NT/2000/XP

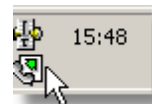
- Windows NT 4.0;
- (Windows
- 2000);
- Windows 2000 - ();
-
-

NT/2000/XP" (.1). " " / Windows



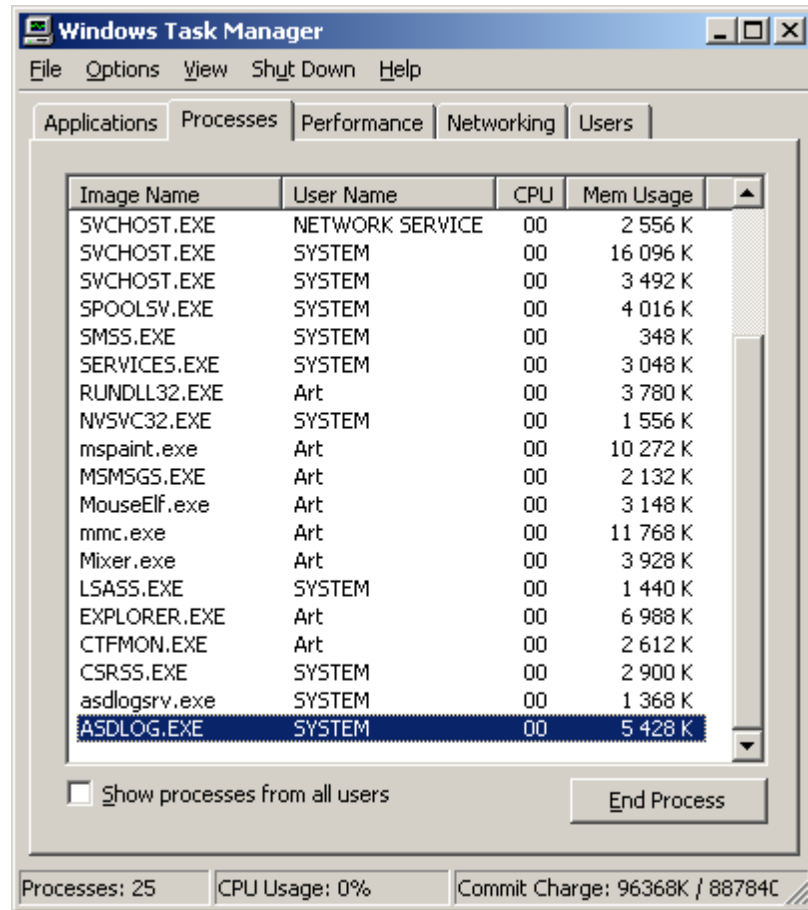
.1

1. - ; Windows
 2. - ;
 3. - ;
- " (.2).
- " , . . Windows



.2

- COM-
- SNMP Data Logger "
- " (.1), ,



.4

snmploggersrv.exe

- /? - ;
- /I - ;
- /A - ;
- /D - ;
- /R -

4.8.2

Windows Vista

Windows Vista

Windows.

- : Interactive Services Detection
- : UIODetect
- : UIODetect.exe
- :
- : %windir%\system32\UIODetect.exe
- :
- * Home Basic:
- * Home Premium:
- * Business:
- * Enterprise:
- * Ultimate:

4.9

-
-
- !
- " SNMP Data Logger
INI- "
- smplogger.ini " " ;
- :
 - Ctrl+S - " / " ;
 - Ctrl+D - " / " ;
 - Ctrl+P - " ;
 - Ctrl+L - log- ;
 - Ctrl+W
 - Ctrl+R - ;
 - Ctrl+E - Windows NT/2000/XP;
 - Ctrl+M -

4.10

Windows.

5

?

5.1

SoftIce

support@aggsoft.ru