

"Direct Excel Connection"

1		1
2		1
3	Direct Excel Connection	2
4		5
5		6
1	Microsoft Excel	6
2	10
3	12
6	?	14
1	14

1

"Direct Excel Connection" ()

(parser), Microsoft Excel, (DDE, ODBC), Microsoft

Excel. :

- Microsoft Excel ; ,
- ;
- : (FIFO) ,
- ; ,
- ;
- (workbook), ; Microsoft Excel
- ; ,
- ;
- .
- : ;
- , , Microsoft Excel;
- .

!

2

Direct Excel Connection :

:

- Windows 95;
- Windows 95 OSR2;
- Windows 98;
- Windows Me;
- Windows NT4;

- Windows 2000;
- Windows XP (all editions) (both x86 and x64);
- Windows 2003 Server (both x86 and x64);
- Windows Vista (both x86 and x64).

5 MB

Advanced Serial Data Logger.

Microsoft Vista:

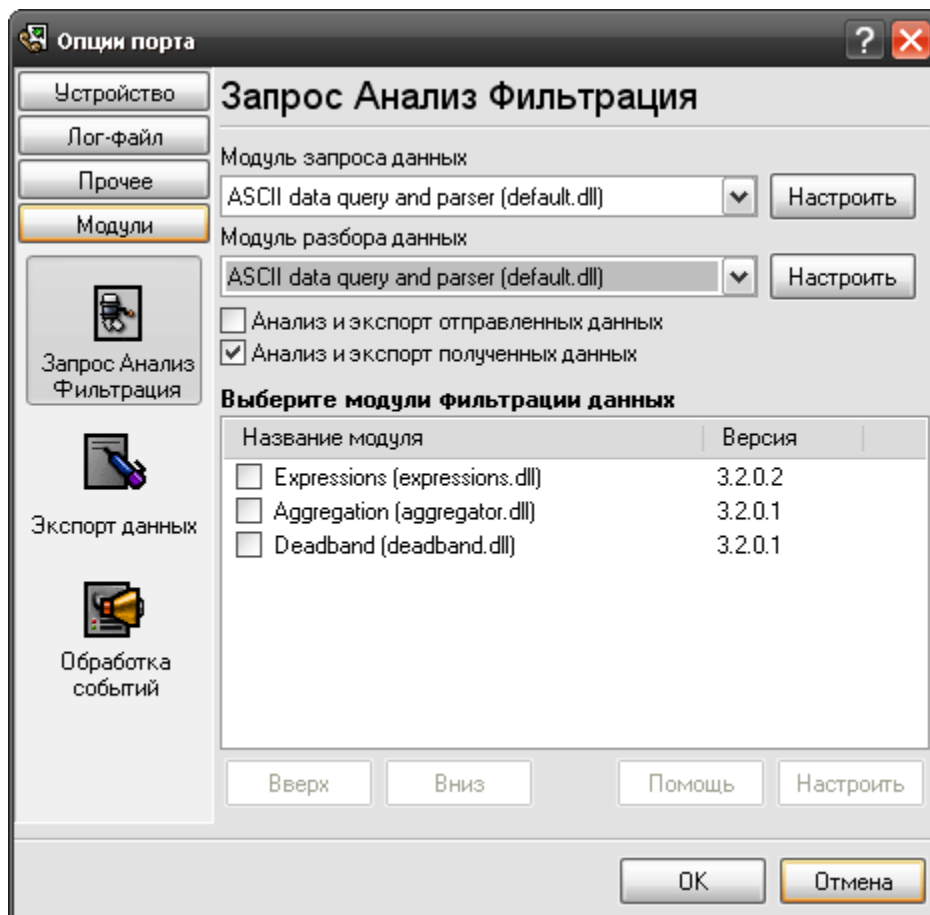
Files, : Program

1. , ;
2. ;
3. Windows Vista .

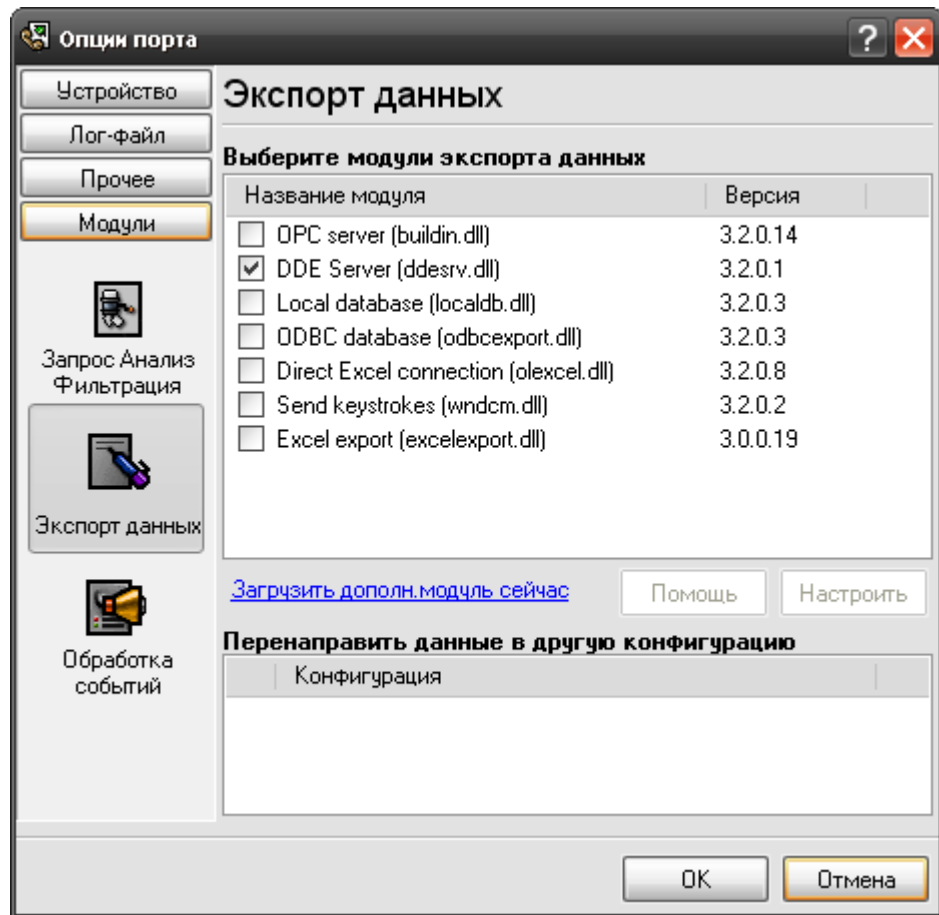
- Google.

3**Direct Excel Connection**

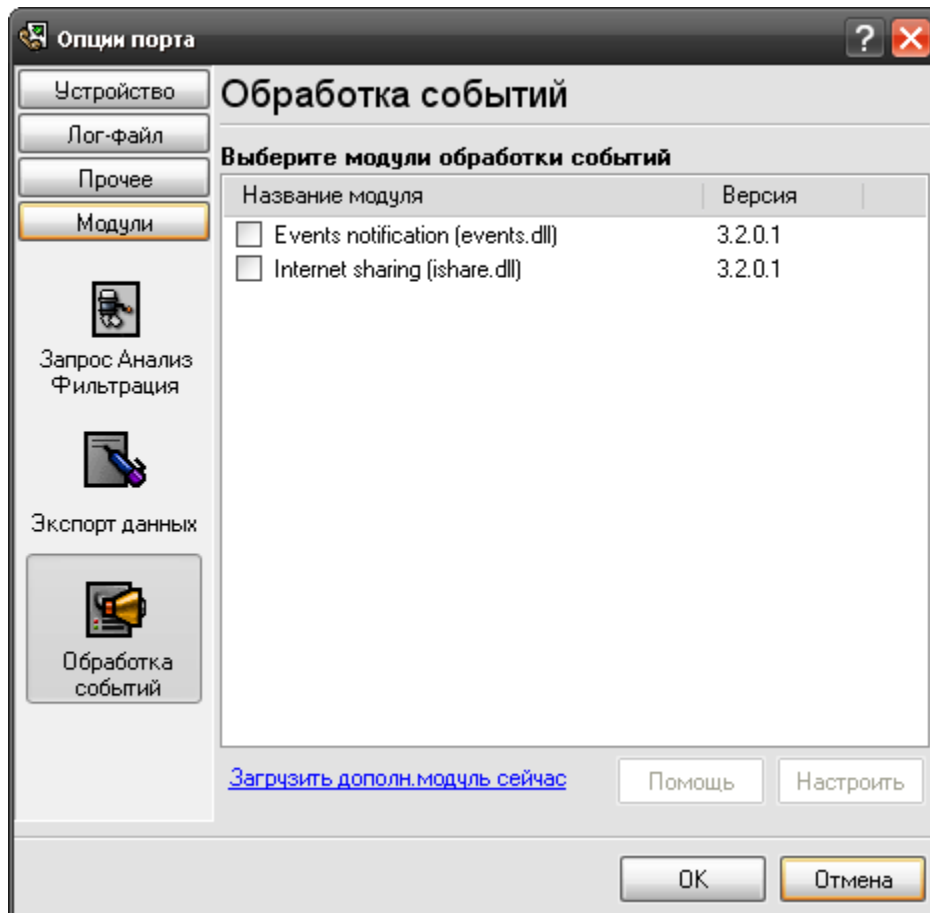
1. (, Advanced Serial Data Logger), ;
 2. ;
 3. Windows;
 4. " " ;
 5. " " .
- .1-2.
- " "
- " - " "
- " "



.1.



.2.



.3.

4

Plug-in -

: Advanced Serial Data Logger

5

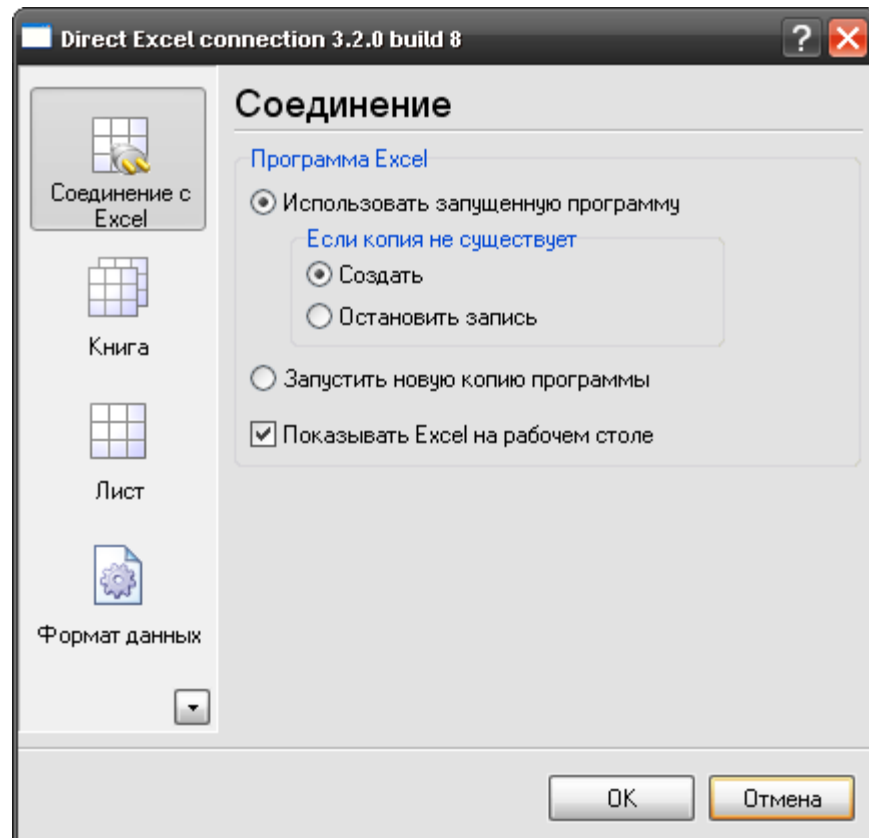
5.1

Microsoft Excel

Microsoft

Excel.
Microsoft Excel,
(worksheet)

1. , (, Advanced Serial Data Logger);
2. " - " (Modules-Data export);
3. "Direct Excel Connection".
4. " " (Setup);
5. " " (Connection) (.1).



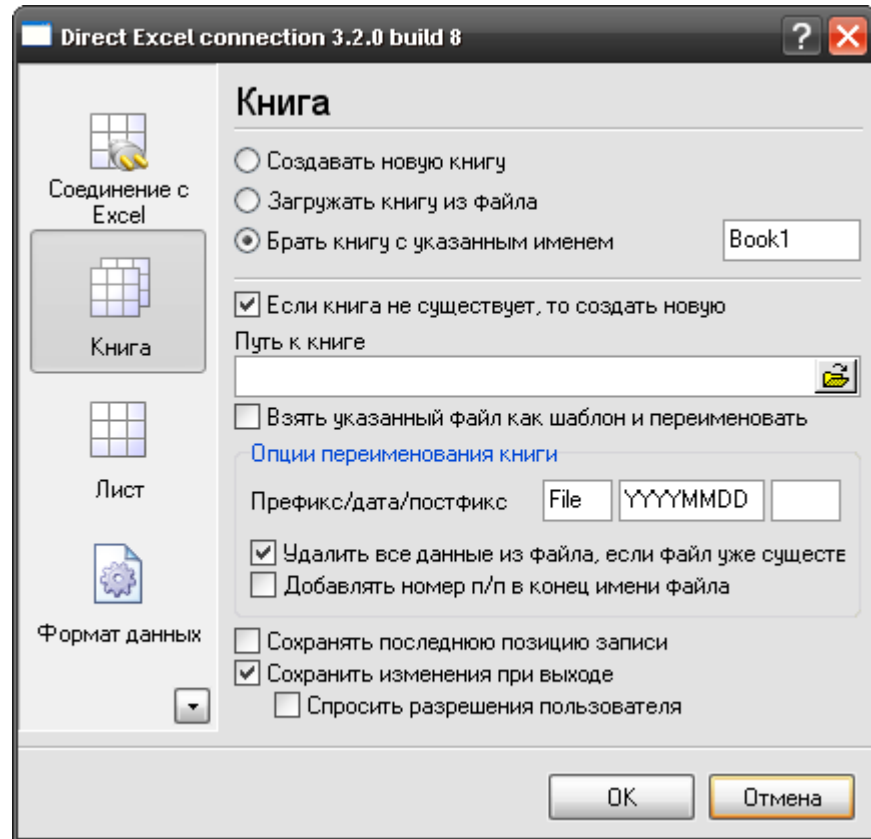
.1

Microsoft Excel

Microsoft Excel

:

1. (instance) Microsoft Excel. " (Connect to exists instance).
 Microsoft Excel.
 Microsoft Excel (Create new one)
 Microsoft Excel (Stop writing), " (If instance doesn't exist).
 Microsoft Excel.
 2. " (Create new
 instance). Microsoft
 Excel. Microsoft Excel.
 Microsoft Excel,
 Windows desktop). " **Excel** " (Display Excel window on
 Microsoft Excel
 Microsoft Excel
 Microsoft
 Excel
 Microsoft Excel,
 (workbook) (worksheet).
 " (Workbook) (.2).



.2

1. (Create new workbook) –

Microsoft Excel.

2. (Load workbook from file) –

- a.
- b.
- c.
- d.

3. (Use workbook with specified name) –

Microsoft Excel.

•

•

•

•

•

Microsoft Excel

Microsoft Excel

1. new sheet);

2. "

Microsoft Excel,

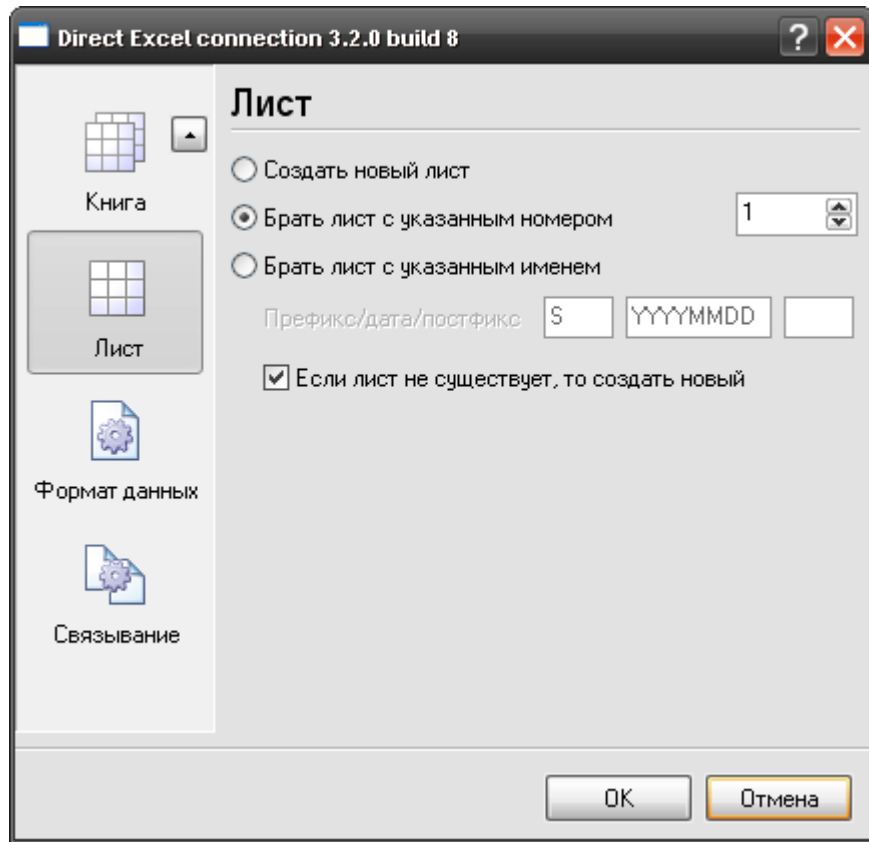
3.

" (Create
" (Use sheet with specified number)

- ; /
- ()
- " (If sheet doesn't exist then create new one)

Excel

Microsoft



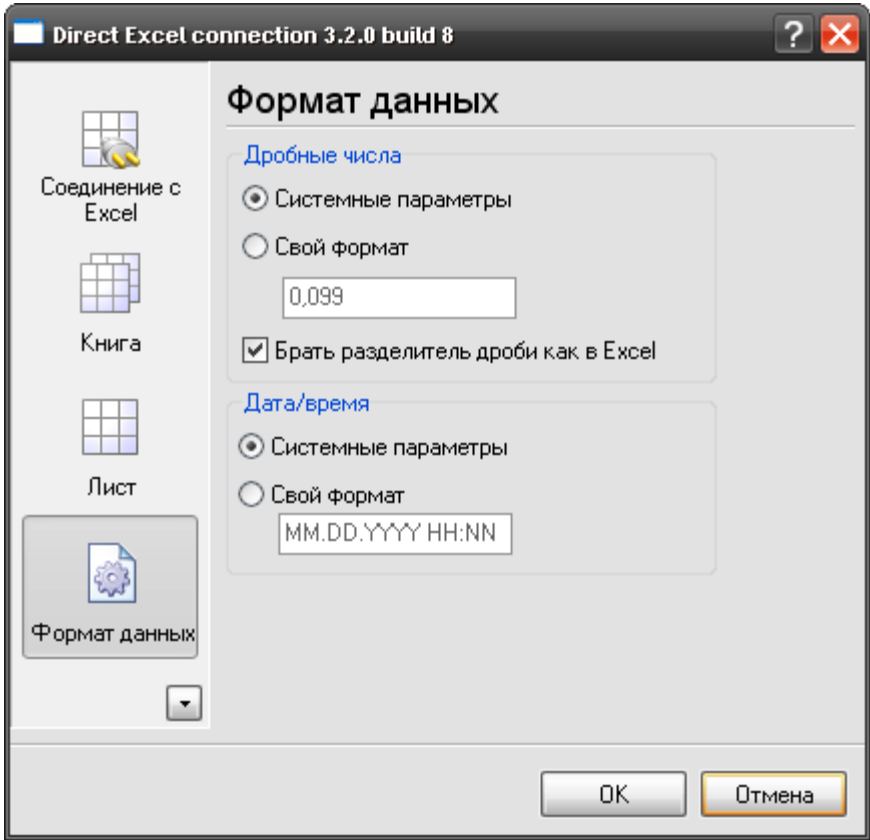
.3

5.2

(Float)

(DateTime).

" (.1)



.1

:
 d - , (1 - 31);
 dd - , (01 - 31);
 ddd - (-)
 ;
 dddd - (-)
 ;
 m - , (1 - 12);
 mm - , (01 - 12);
 mmm - (-)
 ;
 mmmm - (-)
 ;
 yy - (00 - 99);
 yyyy - (0000 - 9999);
 h - , (0 - 23);
 hh - , (00 - 23);
 n - , (0 - 59);

nn - , (00 - 59);
 s - , (0 - 59);
 ss - , (00-59).
 : .1 MM.DD.YYYY HH:NN.
 : 10.29.2003 23:59.

0 -

-

. -

Format)

, -

Panel)

E+ -

'xx'/'xx" -

(Windows Control Panel)

" (International section).

(Number

(Windows Control

(Number Format)

" (International section).

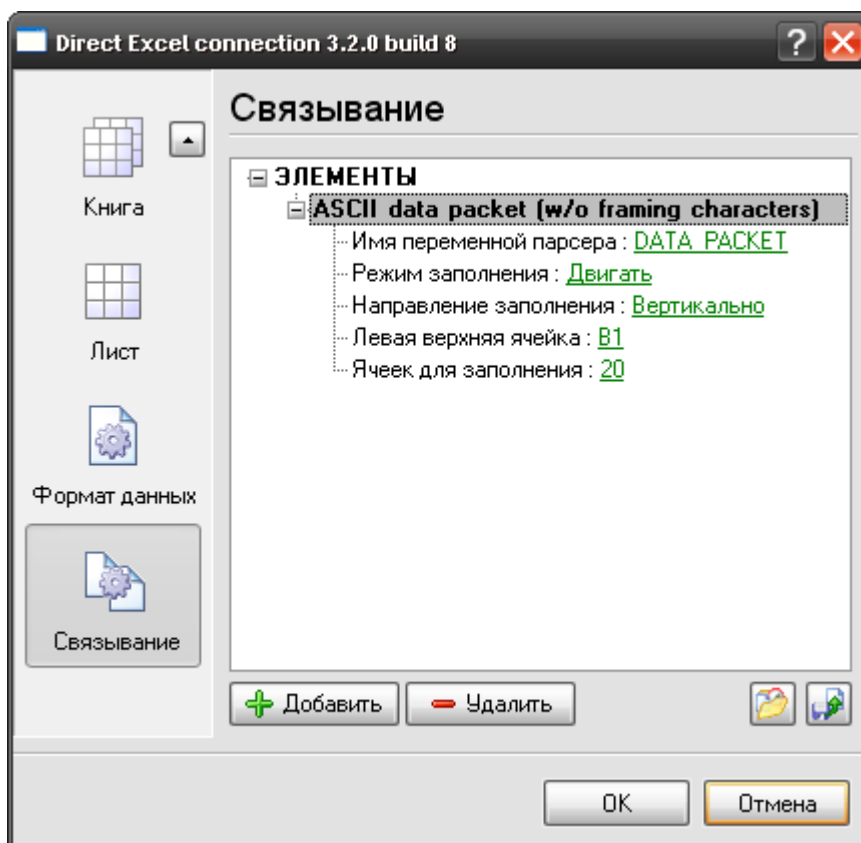
'E+', 'E-', 'e+', or 'e-'

'E+' 'e+',
'E-' 'e-'.

" (Binding),

(.1).

5.3



.1

" (Add item)

"OK"

(. . 1)

(Parser's item name) –

(Filling mode) –

(Clear) –

Microsoft Excel

```

- (Move) - Microsoft Excel
      ,
      ( )
      ,
      .
      ,
      FIFO;
- (Stop) - Microsoft Excel
      ,
      .
      ,
      (Filling orientation) -
      Microsoft Excel, ( , )
      ( );
      (Left top cell) -
      , Microsoft Excel.
      , Microsoft
      Excel. , A1
      ;
      (Cells to fill count) -
      ,
      Microsoft Excel. , Excel
      65535. . . Excel
      65535 .
      " " (Delete item),
      .
      ,
      ,
      "OK".
      ,
      " "
  
```

6

?

6.1

No data for publication –

Error on binding variable with name %s [%s] –

Error on items formation (%s) –

Unable to connect to %s. (%s) –

Unable to disconnect from %s. (%s) –

(, ').

support@aggsoft.ru.

"%s"