

"ODBC Database"

<b>1</b>		<b>1</b>
<b>2</b>		<b>1</b>
<b>3</b>	<b>ODBC Database</b>	<b>2</b>
<b>4</b>		<b>5</b>
<b>5</b>		<b>6</b>
<b>1</b>	<b>DSN? .....</b>	<b>6</b>
<b>2</b>	.....	<b>7</b>
<b>3</b>	.....	<b>10</b>
	<b>Oracle .....</b>	<b>10</b>
	<b>FoxPro .....</b>	<b>10</b>
<b>4</b>	.....	<b>10</b>
	.....	<b>10</b>
	<b>dBASE .....</b>	<b>11</b>
	<b>Paradox .....</b>	<b>11</b>
	<b>Excel .....</b>	<b>12</b>
	.....	<b>13</b>
<b>5</b>	.....	<b>13</b>
<b>6</b>	.....	<b>14</b>
<b>7</b>	<b>ODBC .....</b>	<b>16</b>
<b>8</b>	.....	<b>17</b>
<b>6</b>	<b>?</b>	<b>21</b>
<b>1</b>	.....	<b>21</b>

## 1

"ODBC database" ( ODBC)  
 ( ). ODBC ,  
 ( , ),  
 :

- SQL. ;
- MS SQL Server;
- Oracle database ( 7)
- dBASE I-IV files;
- Paradox;
- DBF;
- MS Excel;
- CSV;
- ODBC ( , Lotus Notes/Domino
- ODBC NotesSQL).

( , ),  
 SQL Database Professional.

## 2

ODBC Database :

:

- Windows 95;
- Windows 95 OSR2;
- Windows 98;
- Windows Me;
- Windows NT4;
- Windows 2000;
- Windows XP (all editions) (both x86 and x64);
- Windows 2003 Server (both x86 and x64);
- Windows Vista (both x86 and x64).

:

5 MB

:

( ), Advanced Serial Data Logger.

**Microsoft Vista:**

Files, : Program

1. ,
2. ;
3. Windows Vista .

. - , Google.

**3****ODBC Database**

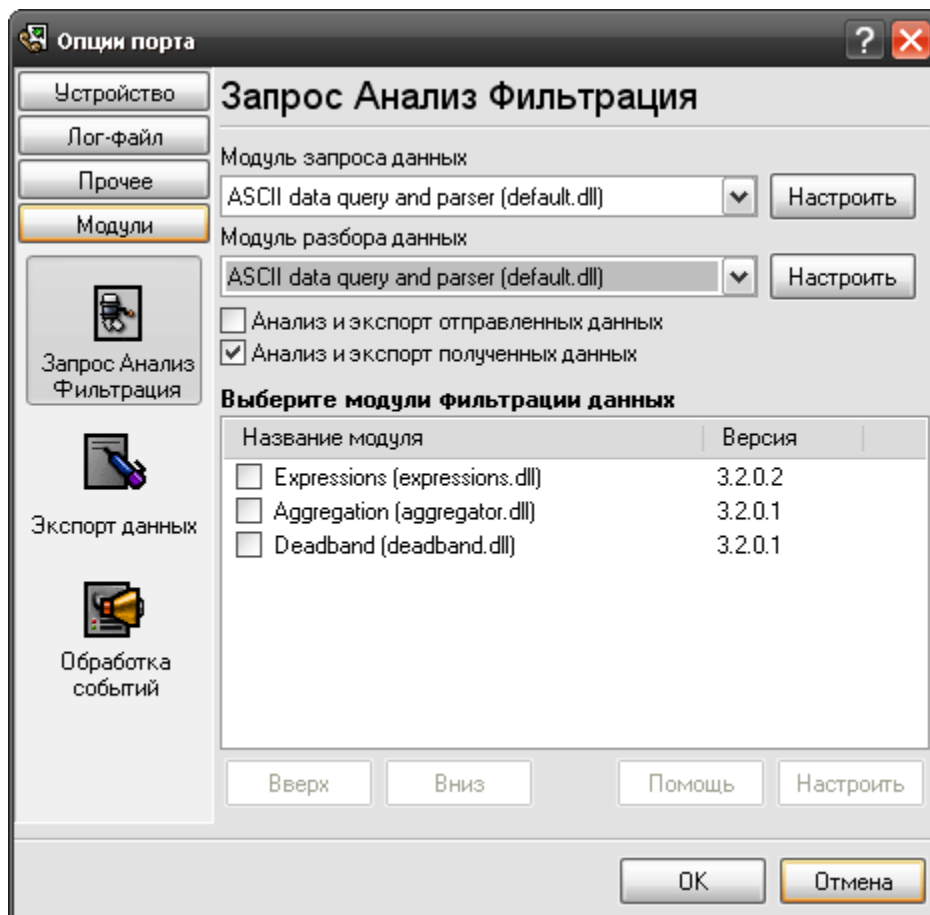
1. ( , Advanced Serial Data Logger), ;
2. ;
3. ,
4. Windows;
5. " " ;  
 , " "

. .1-2.

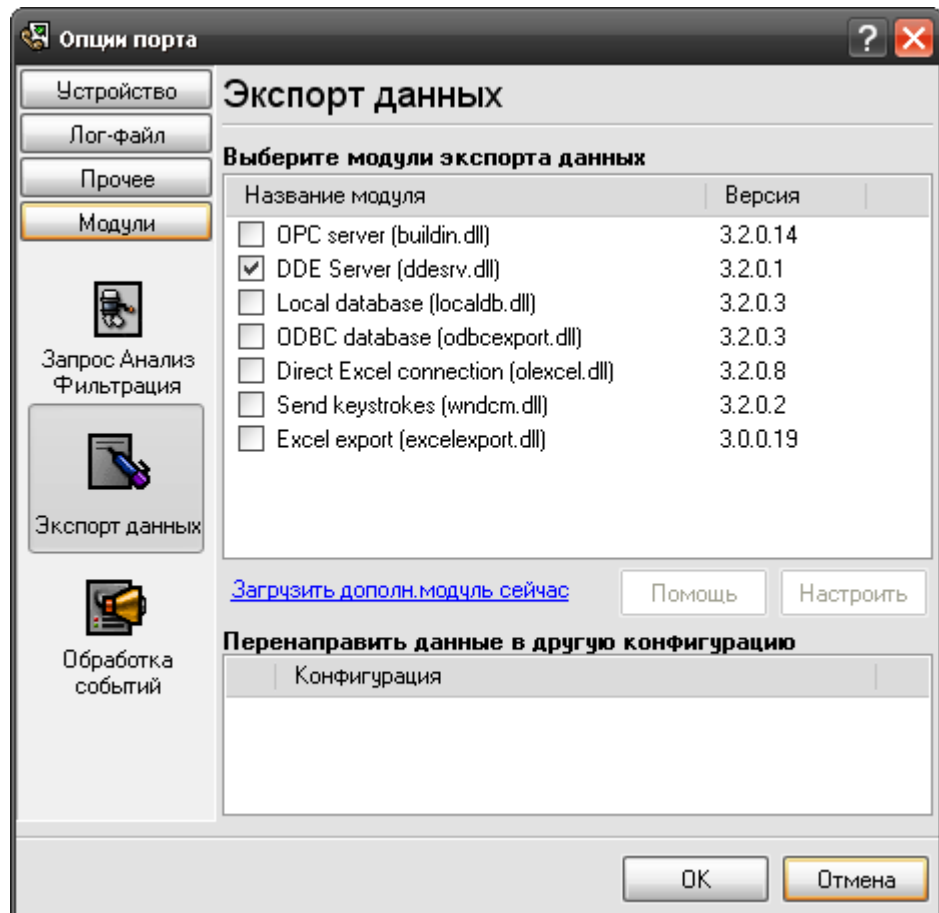
" "

" - "

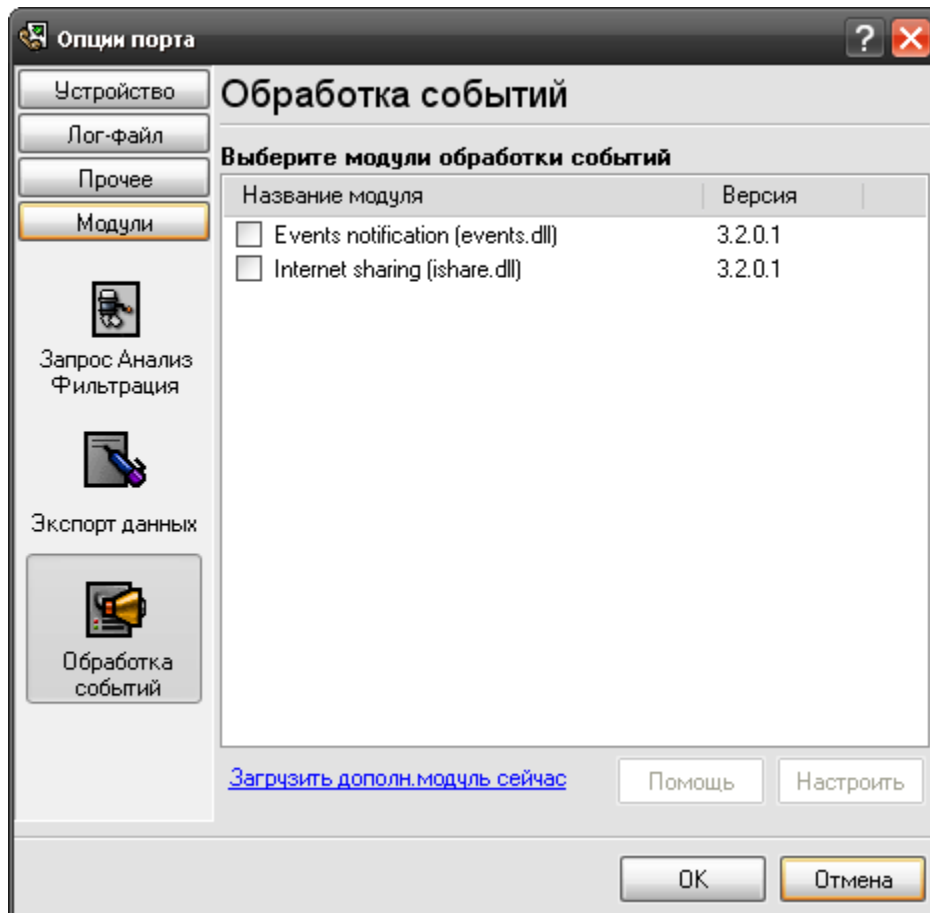
" "



.1.



.2.



.3.

## 4

### Plug-in -

: Advanced Serial Data Logger



## 5.2

ODBC.

ODBC

: Oracle, MS SQL, MS Access, MS Excel, FoxPro, dBASE.

ODBC

ODBC

Microsoft ([www.microsoft.com](http://www.microsoft.com))

1.

ODBC

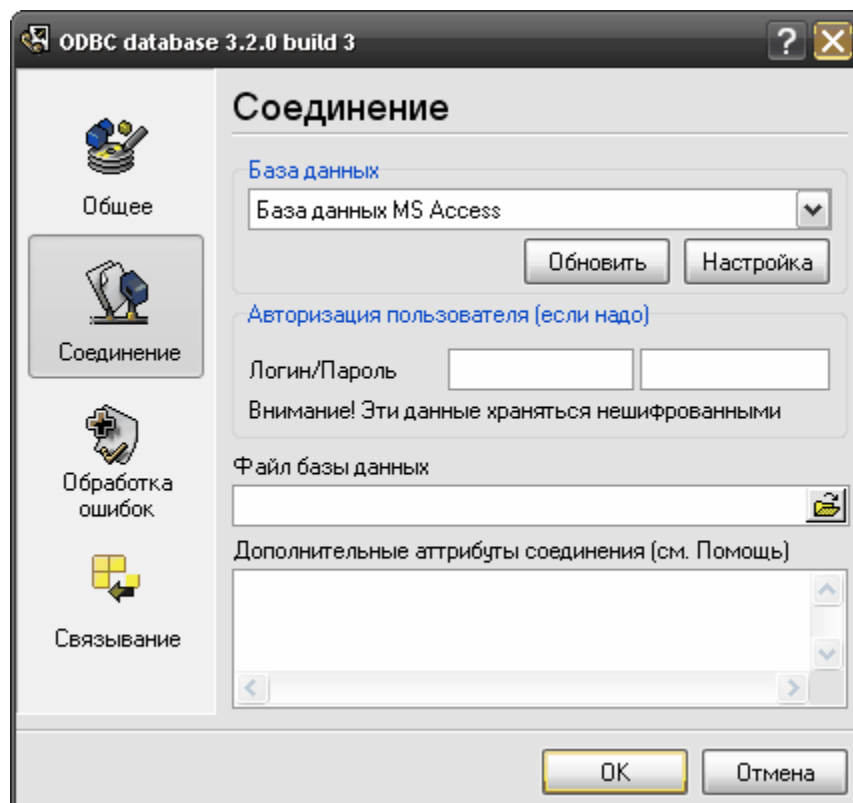
" (.1).

ODBC" (.2).

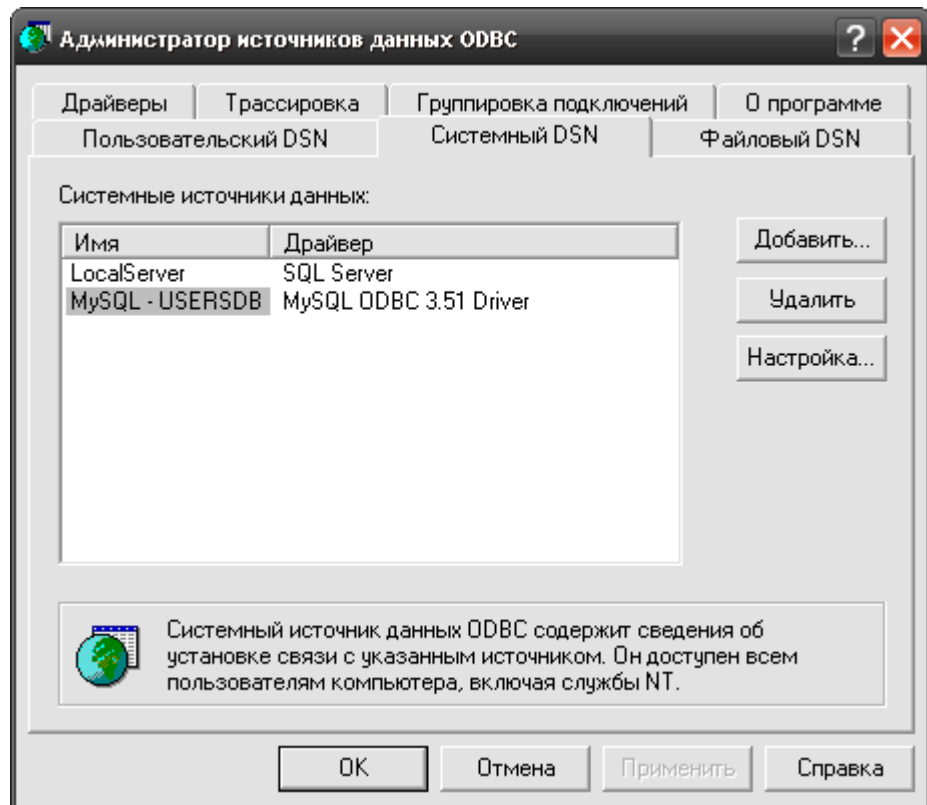
ODBC

Explorer 5.0

Microsoft Data Access Components (MDAC)

Internet  
Microsoft<http://www.microsoft.com/odbc>.

.1.



.2

2.

" ( .2). ( , " DSN"),  
 " " Windows NT/2000/XP,  
 " " DSN".  
 " ( .1)

3.

!

!

4.

, " DBF Microsoft Access,  
 " "

5.

ODBC

[DSN=&lt;data-source-name&gt;]

```
[FILEDSN=<data-source-name.dsn>]
[UID=<          >]
[PWD=<          >]
[DBQ=<          >]
[ISOLATIONLEVEL=<value>]
```

- **DSN -**

- **FILEDSN -** .dsn ( . . DSN).
- **UID -** ( . . );
- **PWD -** ( . . );
- **DBQ -** ( . . MS Access).

```
" . . . . .
. . . . .
. . . . .
[< . . . . . >=< . . . . . >]
```

DSN.

## 1. ODBC

### 1:

```
"D:\incom.mdb":
DBQ=D:\incom.mdb
"MS Access 97 Database",
```

### 2:

```
"Payroll" Oracle "moola",
:
DSN=Payroll
UID=/
SERVER=moola
```

### 6.

"OK" ( .1)

"\_\_\_\_\_".



## 5.4.2 dBASE

- **COLLATINGSEQUENCE** - : ASCII ( ) International.  
Collating Sequence
- **DEFAULTDIR** -
- **DELETED** - = 1, = 0,  
( )  
"Show Deleted Rows"
- **DESCRIPTION** - "Description"
- **DRIVER** - DLL
- **DRIVERID** - 21 (dBASE III), 277 (dBASE IV), 533 (dBASE 5.0)
- **FIL** - : dBASE III, dBASE IV, or dBASE 5
- **PAGETIMEOUT** - - 600 (60  
)  
ODBC  
"Page Timeout"
- **READONLY** - TRUE ; FALSE  
"Read Only"
- **STATISTICS** - dBASE,  
:  
ODBC  
"Approximate Row Count"
- **THREADS** - 3  
"Threads"

## 5.4.3 Paradox

- **COLLATINGSEQUENCE** - : ASCII ( ) International.  
Collating Sequence
- **DEFAULTDIR** -
- **DESCRIPTION** - "Description"
- **DRIVER** - DLL
- **DRIVERID** - 26 (Paradox 3.x), 282 (Paradox 4.x), 538 (Paradox 5.x)
- **FIL** - : Paradox 3.x, Paradox 4.x, or Paradox 5.x

- **PAGETIMEOUT** - , - 600 (60  
). : ,  
"Page Timeout" ODBC
- **PARADOXNETPATH** - , Paradox, Paradox  
PDOXUSRS.net ( , Paradox 4.x) PARADOX.net ( , Paradox  
5.x). Paradox.  
Paradox.  
"Select Network Directory"
- **PARADOXNETSTYLE** - Paradox:  
"3.x" Paradox 3.x "4.x" Paradox 4.x 5.x. "3.x" "4.x"  
Paradox 4.x 5.x; Paradox 3.x,  
"3.x". "Net Style"
- **PARADOXUSERNAME** - Paradox.  
"User Name"
- **PWD** - , DSN.  
ODBC SQLDriverConnect  
Paradox.
- **READONLY** - TRUE ; FALSE  
"Read Only"
- **THREADS** - 3  
"Threads"

#### 5.4.4 Excel

- **DBQ** - Microsoft Excel Microsoft Excel 5.0,  
7.0, 97. "Database"
- **DEFAULTDIR** - Excel.  
"Select Directory or Select Workbook"
- **DESCRIPTION** - "Description"
- **DRIVER** - DLL
- **DRIVERID** - , 534 (Microsoft Excel 3.0), 278 (Microsoft Excel 4.0), 22  
(Microsoft Excel 5.0/7.0), 790 (Microsoft Excel 97 )
- **FIL** - - Excel 3.0, Excel 4.0, Excel 5.0, Excel 7.0, Excel 97
- **FIRSTROWHASNAMES** - 1  
Excel
- **MAXSCANROWS** - , 1 16. :  
8. 0,  
"Rows to Scan"
- **READONLY** - TRUE ; FALSE

- **THREADS** - "Read Only" 3 "Threads"

### 5.4.5

- **CHARACTERSET** - : OEM ANSI.
- **COLNAMEHEADER** - TRUE
- **DEFAULTDIR** - Excel
- **DESCRIPTION** - "Description"
- **DRIVER** - DLL
- **DRIVERID** - 27 (Text)
- **EXTENSIONS** - "Extensions"
- **FIL** - Text
- **FILETYPE** - (Text).
- **FORMAT** - FIXEDLENGTH, TABDELIMITED, CSVDELIMITED ( ), DELIMITED() ( ).
- **MAXSCANROWS** - 1 32767. : 25. 0, "Rows to Scan"
- **READONLY** - TRUE ; FALSE "Read Only"

### 5.5

(FOREIGN KEY), (PRIMARY KEY),  
 " " ( )  
 1)



.1

1. 3 — : “ ’ ”  
, , , .
2. — ’ “  
” ’ , . “ ”
3. — ,

## 5.6

ANSI SQL92,

(a-z, A-Z),

(\_).

ANSI SQL  
NUMBER, DATE, TIME, STRING, SELECT, SUM, MIN, MAX, \_\_\_\_\_.

1.

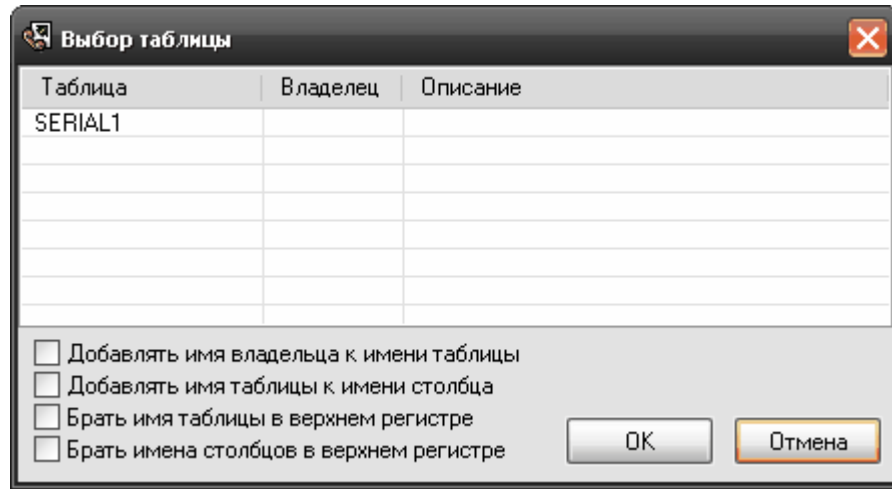
" (.1).

" (.2).

"OK".



.1



.2

2.

ODBC

DEFAULT

NULL.

NULL

## 5.7

## ODBC

- 
- Microsoft Excel, Microsoft Excel "!", "\$".
- Microsoft Excel, Microsoft Excel 3.0 4.0, Microsoft Excel, < \_ > Microsoft Excel 5.0, 7.0, 97. < \_ >
- dBASE, ASCII 127
- Microsoft Access, 64
- dBASE, Microsoft Excel 3.0 4.0, Paradox, Text, MS-DOS CON, AUX, LPT1, LPT2



```
BINARY
BIT
BOOLEAN
BY
BYTE
-C
  CHAR, CHARACTER
  COLUMN
  CompactDatabase
  CONSTRAINT
  Container
  Count
  COUNTER
  CREATE
  CreateDatabase
  CreateField
  CreateGroup
  CreateIndex
  CreateObject
  CreateProperty
  CreateRelation
  CreateTableDef
  CreateUser
  CreateWorkspace
  CURRENCY
  CurrentUser
-D
  DATABASE
  DATE
  DATETIME
  DELETE
  DESC
  Description
  DISALLOW
  DISTINCT
  DISTINCTROW
  Document
  DOUBLE
  DROP
-E
  Echo
  Else
  End
  Eqv
  Error
  EXISTS
  Exit
-F
  FALSE
  Field, Fields
  FillCache
  FLOAT, FLOAT4, FLOAT8
  FOREIGN
  Form, Forms
  FROM
  Full
  FUNCTION
-G
  GENERAL
  GetObject
  GetOption
  GotoPage
  GROUP
  GROUP BY
  GUID
-H
  HAVING
```

-I  
Idle  
IEEEDOUBLE, IEEESINGLE  
If  
IGNORE  
Imp  
IN  
INDEX  
Index, Indexes  
INNER  
INSERT  
InsertText  
INT, INTEGER, INTEGER1, INTEGER2, INTEGER4  
INTO  
IS

-J  
JOIN

-K  
KEY

-L  
LastModified  
LEFT  
Level  
Like  
LOGICAL, LOGICAL1  
LONG, LONGBINARY, LONGTEXT

-M  
Macro  
Match  
Max, Min, Mod  
MEMO  
Module  
MONEY  
Move

-N  
NAME  
NewPassword  
NO  
Not  
Note  
NULL  
NUMBER, NUMERIC

-O  
Object  
OLEOBJECT  
OFF  
ON  
OpenRecordset  
OPTION  
OR  
ORDER  
Orientation  
Outer  
OWNERACCESS

-P  
Parameter  
PARAMETERS  
Partial  
PERCENT  
PIVOT  
PRIMARY  
PROCEDURE  
Property

-Q  
Queries  
Query

```
Quit
-R
  REAL
  Recalc
  Recordset
  REFERENCES
  Refresh
  RefreshLink
  RegisterDatabase
  Relation
  Repaint
  RepairDatabase
  Report
  Reports
  Requery
  RIGHT
-S
  SCREEN
  SECTION
  SELECT
  SET
  SetFocus
  SetOption
  SHORT
  SINGLE
  SMALLINT
  SOME
  SQL
  StDev, StDevP
  STRING
  Sum
-T
  TABLE
  TableDef, TableDefs
  TableID
  TEXT
  TIME, TIMESTAMP
  TOP
  TRANSFORM
  TRUE
  Type
-U
  UNION
  UNIQUE
  UPDATE
  USER
-V
  VALUE
  VALUES
  Var, VarP
  VARBINARY, VARCHAR
-W
  WHERE
  WITH
  Workspace
-X
  Xor
-Y
  Year
  YES
  YESNO
```

## 6

## ?

### 6.1

No data for publication –

Error on binding variable with name %s [%s] –

Error on items formation (%s) –

Unable to connect to %s. (%s) –

Unable to disconnect from %s. (%s) –

( , ).

[support@aggsoft.ru](mailto:support@aggsoft.ru).

"%s"