

"Data query and parser for ADAM, ICP CON"

1		1
2		2
3	<b>Data query and parser for ADAM, ICP CON</b>	<b>3</b>
4		6
5		7
6	?	12
1	.....	12

/ - , - , / ,  
 ( ) DCON. ASCII  
 RS-485.

DAQ .

DAQ :

### ICP-CON I-7000

### ICP DAS

ICPCON I-7005 (8-channel thermistor input and 6-channel digital output module)  
 ICPCON I-7011 (Single channel analog input module with DOx2, DIx1)  
 ICPCON I-7012 (Single channel analog input module with DOx2, DIx1)  
 ICPCON I-7013(D) (Single channel RTD input module)  
 ICPCON I-7014 (Single channel analog input module with linear mapping, DOx2, DIx1)  
 ICPCON I-7015(D) (6-channel RTD input module)  
 ICPCON I-7016 (D) (ADC/DAC module with DOx4,DIx1)  
 ICPCON I-7017 (8-channel voltage and current input module)  
 ICPCON I-7018 (8-channel voltage, current and thermocouple input module)  
 ICPCON I-7019 (8-channel voltage, current, and thermocouple input module, with various types of inputs)  
 ICPCON I-7033(D) (3-channel RTD input module)  
 ICPCON I-7041 (DIO module, DIx14)  
 ICPCON I-7042 (DIO module, DOx13)  
 ICPCON I-7043 (DIO module, DOx16)  
 ICPCON I-7044 (DIO module, DIx4, DOx8)  
 ICPCON I-7045 (DIO module, DOx16)  
 ICPCON I-7050 (DIO module, DIx7, DOx8)  
 ICPCON I-7051 (DIO module, DIx16)  
 ICPCON I-7052 (DIO module, DIx8)  
 ICPCON I-7053 (DIO module, DIx16)  
 ICPCON I-7055 (DIO module, DIx8, DOx8)  
 ICPCON I-7058 (DIO module, DIx8)  
 ICPCON I-7059 (DIO module, DIx8)  
 ICPCON I-7060 (DIO module, DIx4, DOx4)  
 ICPCON I-7063 (DIO module, DIx8, DOx3)  
 ICPCON I-7065 (DIO module, DIx4, DOx5)  
 ICPCON I-7066 (DIO module, DOx7)  
 ICPCON I-7067 (DIO module, DOx7)  
 ICPCON I-7080 (2 channel counter with DOx2)  
 ICPCON I-7083 (3 axis, 32-bit encoder counter)

### ADAM-4000

### Advantech

ADAM 4013 (Single channel RTD input module)  
 ADAM 4015 (6-channel RTD input module)

ADAM 4016 (ADC/DAC module with DOx4,Dlx1)  
 ADAM 4017 (8-channel analog input module)  
 ADAM 4018 (8-channel analog input module)  
 ADAM 4050 (DIO module, Dlx7, DOx8)  
 ADAM 4051 (DIO module, Dlx16)  
 ADAM 4052 (DIO module, Dlx8)  
 ADAM 4053 (DIO module, Dlx16)  
 ADAM 4055 (DIO module, Dlx8, DOx8)  
 ADAM 4080 (Counter/Frequency input module)

**NuDAM-6000****ADLINK Technology Inc.**

NuDAM 6013 (Single channel RTD input module)  
 NuDAM 6015 (6-channel RTD input module)  
 NuDAM 6016 (ADC/DAC module with DOx4,Dlx1)  
 NuDAM 6017 (8-channel analog input module)  
 NuDAM 6018 (8-channel analog input module)  
 NuDAM 6050 (DIO module, Dlx7, DOx8)  
 NuDAM 6051 (DIO module, Dlx16)  
 NuDAM 6052 (DIO module, Dlx8)  
 NuDAM 6053 (DIO module, Dlx16)  
 NuDAM 6055 (DIO module, Dlx8, DOx8)  
 NuDAM 6080 (Counter/Frequency input module)

**2**

Data query and parser for ADAM, ICP CON

:

:

- Windows 95;
- Windows 95 OSR2;
- Windows 98;
- Windows Me;
- Windows NT4;
- Windows 2000;
- Windows XP ( ) ( x86 x64);
- Windows 2003 Server ( x86 x64);
- Windows Vista ( x86 x64).

:

5 MB

:

( ),

Advanced Serial Data Logger.

**Microsoft Vista:**

Files, : Program

1. , ;
2. ;
3. Windows Vista . - , Google.

**3 Data query and parser for ADAM, ICP CON**

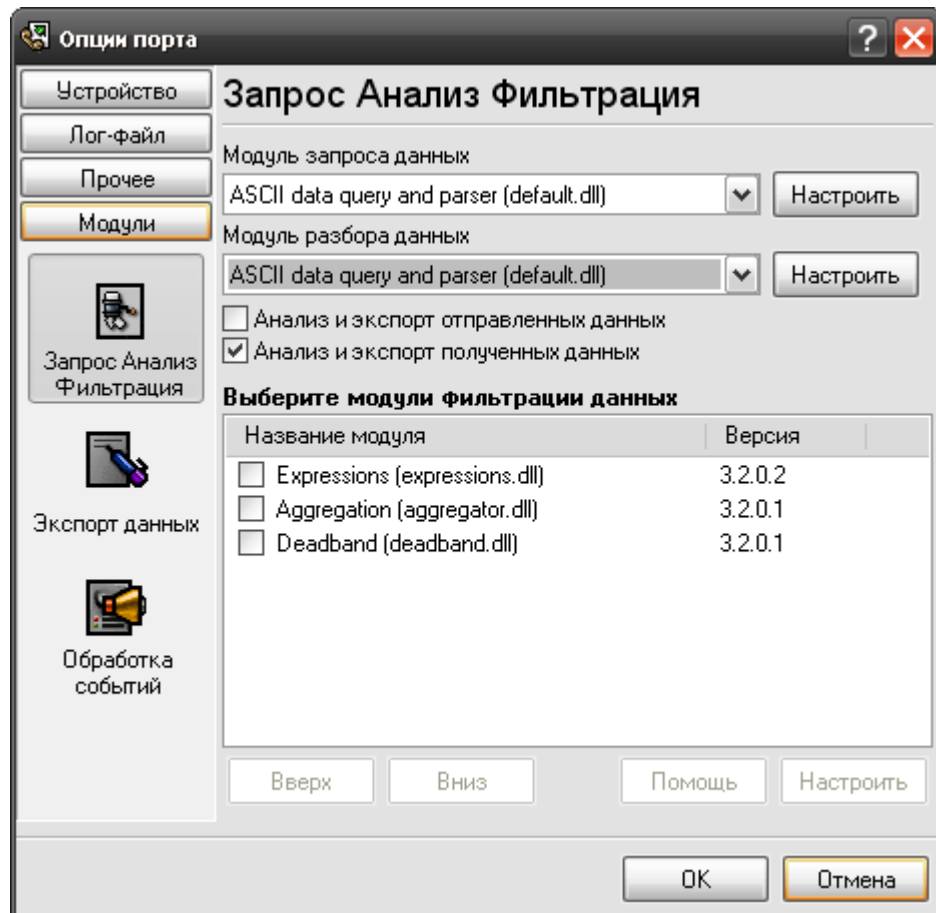
1. ( , Advanced Serial Data Logger), ;
2. ;
3. , Windows;
4. " " ;
5. , " "

.1-2.

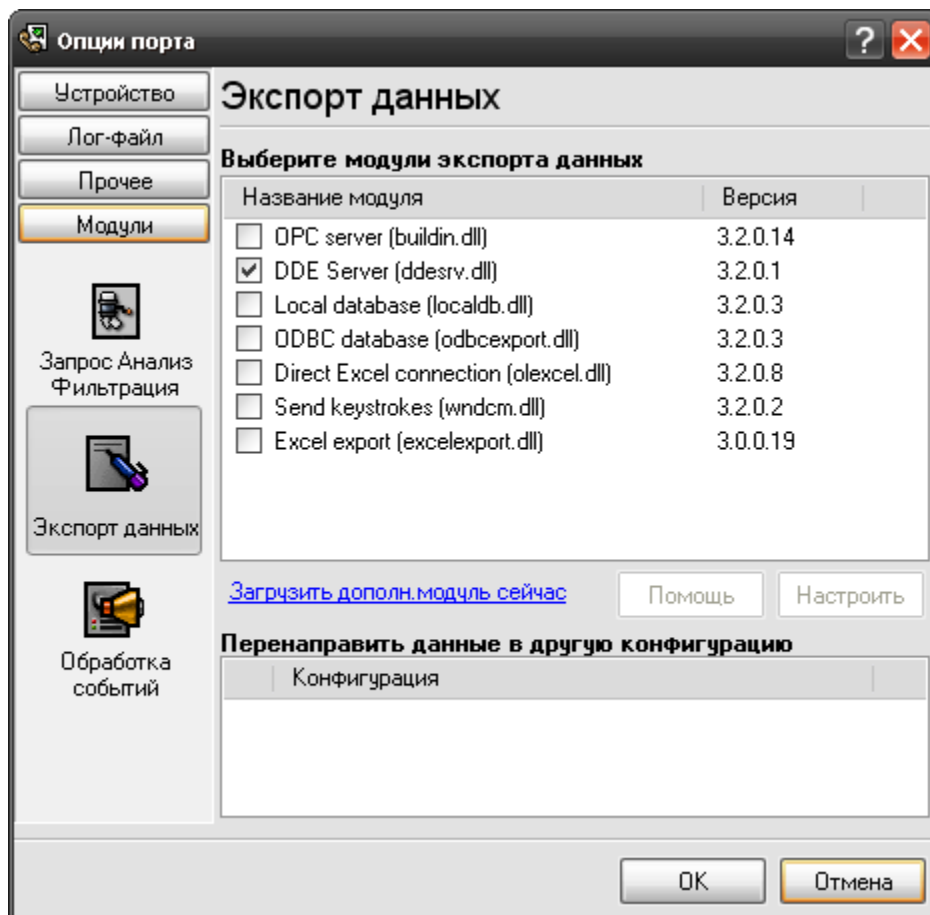
" "

" - "

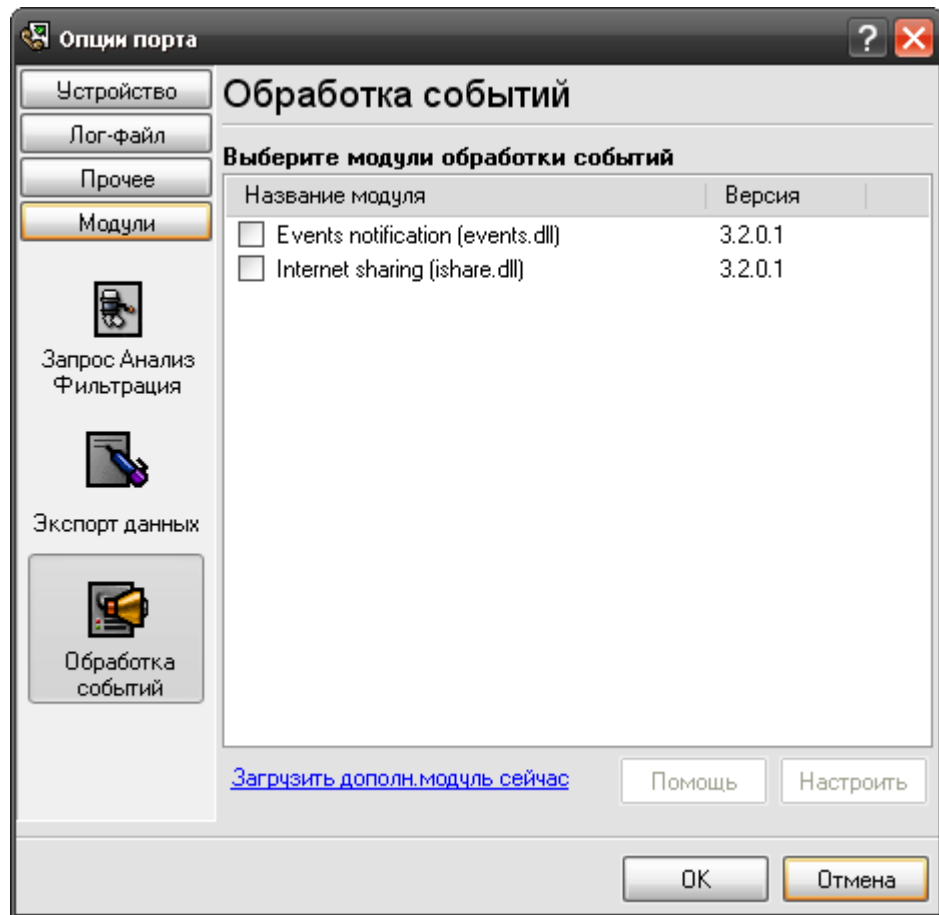
" "



.1.



.2.



.3.

## 4

## Plug-in -

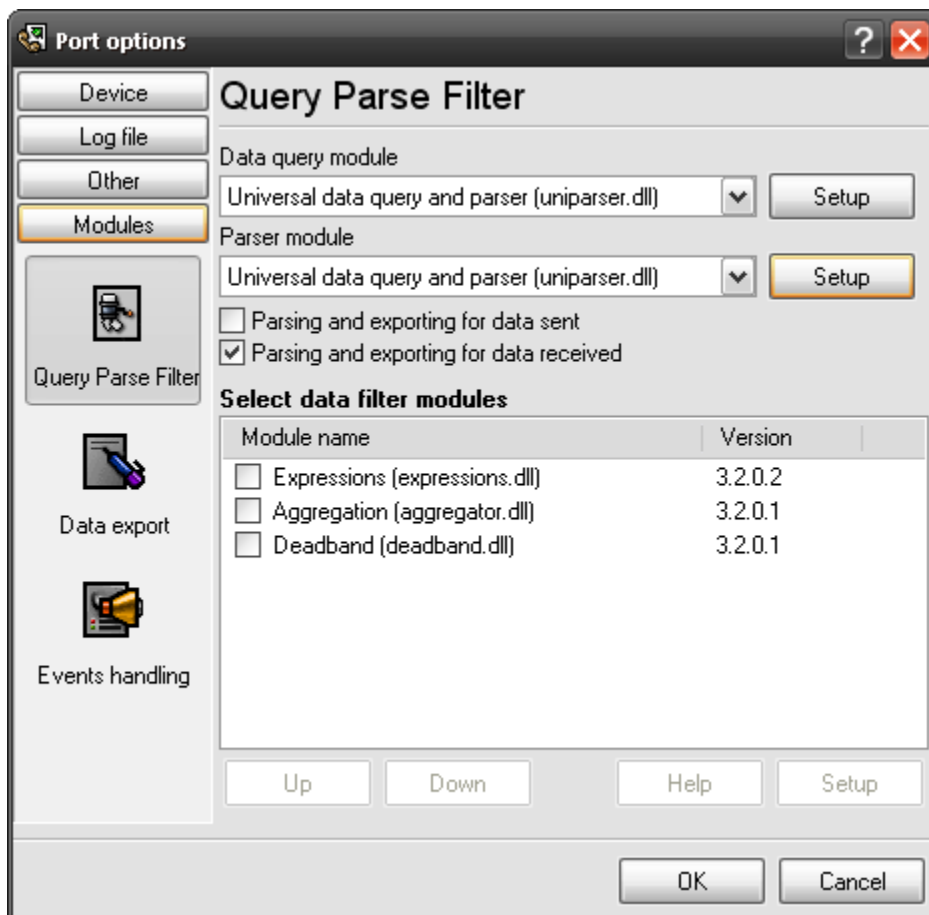
: Advanced Serial Data Logger

## 5

- (data query) -
- (parser) -

(variables)

"Universal data query and parser" "Data query module" "Parser module" (.1).



.1

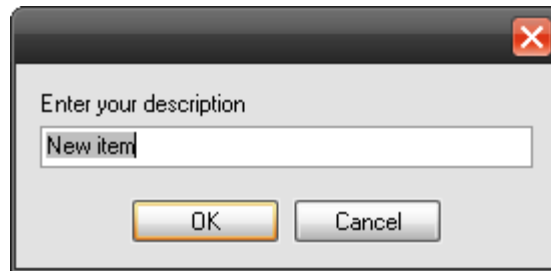
"Setup".

" (Actions -> Add new request).

( .2),

"OK"

( .3).

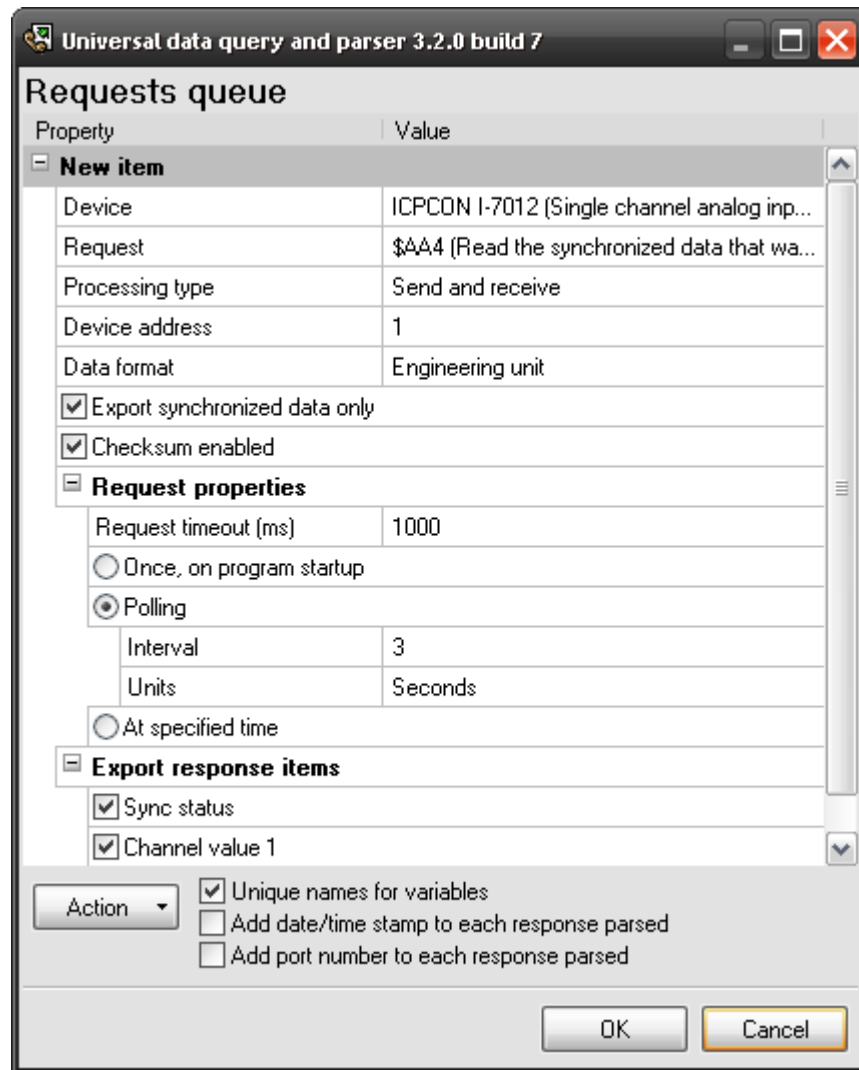


.2.

- **(Device) -**
- **(Request) -**
- **(Processing type) -**
  1. (Send and receive) -
  2. (Send) -
  3. (Receive) -
  4. (Disabled) -
- **(Request properties) -**

**(Request timeout) -**

- (Once, on program startup) -
- (Polling) - " " (Interval) " . ." (Units).
- (At specified time) - HH:MM:SS ( , , ).



.3.

- (Checksum enabled) -
- (Data format) -
- (Export synchronized data only) -

"OK",

```

021+555.222-66622+7773+8
<20080115110900.766;
024BA#0D
<20080115110900.798;
021+555.222-66622+7773+8
<20080115110901.907;
024BA#0D

```

.4.

**(Parser)**

\_\_\_\_\_

- 1.
- 2.
- 3.
- 4.
- 5.

response items) ( .3). " (Export

" (Unique names for variables)

- 1.

Aggregator

- 2.

: I7015\_1\_VAL1, I7012\_2\_VAL5

Aggregator

). : VAL1, VAL2, SYNC.

**FULL\_DATA\_PACKET -**

DATA\_PACKET -

response parsed) -

(Add date/time stamp to each

DATE\_TIME\_STAMP

parsed) -

(Add port number to each response

SERIAL\_PORT\_NUMBER

## 6

## ?

### 6.1

No data for publication –

Error on binding variable with name %s [%s] –

Error on items formation (%s) –

Unable to connect to %s. (%s) –

Unable to disconnect from %s. (%s) –

( , ).

[support@aggsoft.ru](mailto:support@aggsoft.ru).

"%s"