

" DDE"

1		1
2		1
3	DDE	2
4		5
5		6
1		6
2		6
3		8
6	?	8
1		8

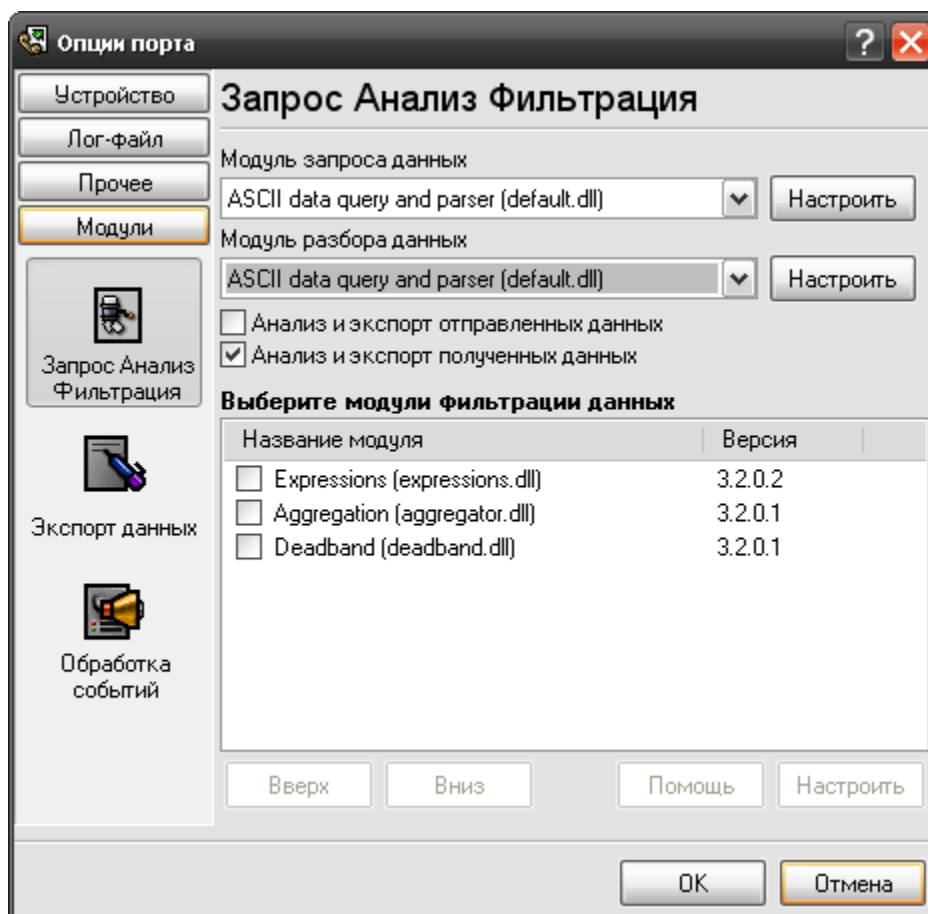
1

Logger) "DDE server" (, Advanced Serial Data
 (DDE).
 Microsoft Office
 :
 1.
 2.
 3.
 4.
 •
 (DDE).
 DDE, , Microsoft Excel;
 Microsoft Excel,
 !

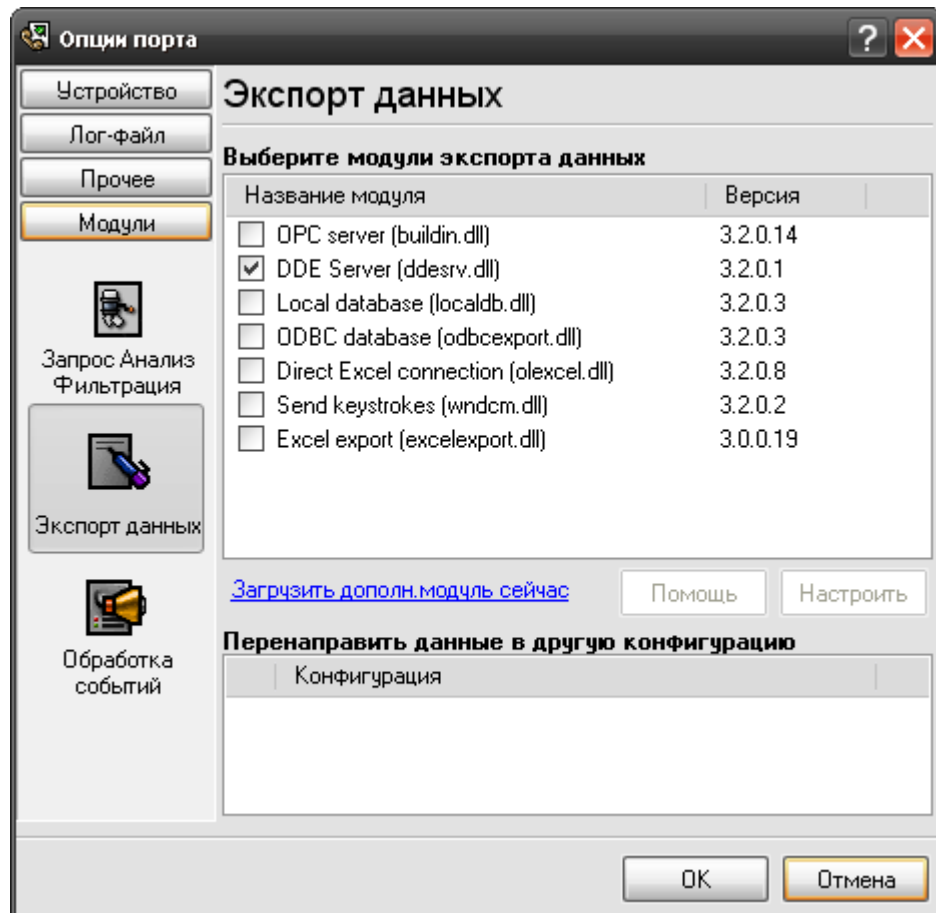
2

DDE :
 :

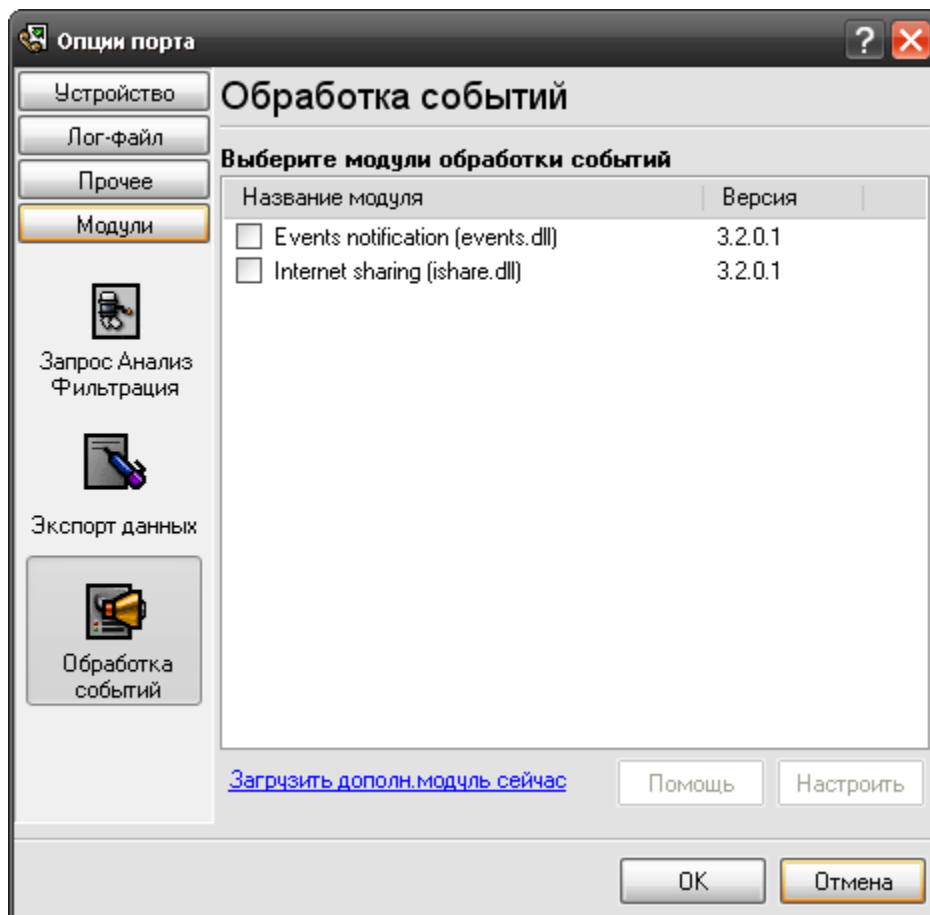
- Windows 95;
- Windows 95 OSR2;
- Windows 98;
- Windows Me;
- Windows NT4;
- Windows 2000;
- Windows XP (all editions) (both x86 and x64);
- Windows 2003 Server (both x86 and x64);
- Windows Vista (both x86 and x64).



.1.



.2.



.3.

4

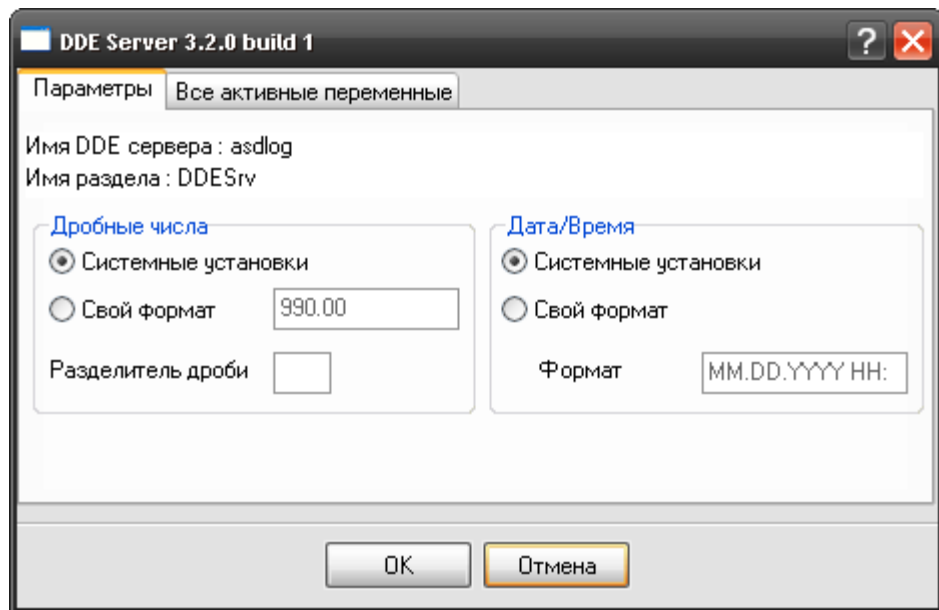
Plug-in -

: Advanced Serial Data Logger

5

5.1

1. (, Advanced Serial Data Logger),
 2. ; " " ;
 3. "DDE Server".
 4. " " ;
 5. (.1) " DDE "
- Ctrl+C.



.1.

DDE

5.2

" " / " .
:

d - (1-31).
dd - (01-31).
ddd - (-)
dddd - (-)
m - (1-12).
mm - (01-12)
mmm - (-)
mmmm - (-)
yy - (00-99)
yyyy - (0000-9999).
h - (0-23).
hh - (00-23).
n - (0-59)
nn - (00-59).
s - (0-59).
ss - (00-59).

: HHDDMMYYYY.
 / : 0101122003.

0 -

0.

-

. -

Windows)

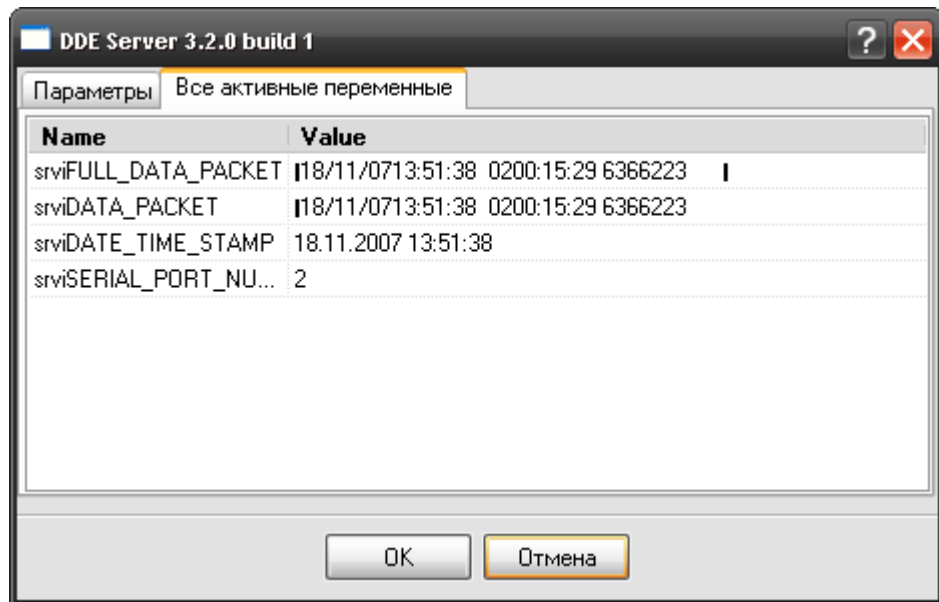
Windows)

E+ - 'E+', 'E-', 'e+', 'e-'
 , () 'E+' 'e+',
 () - 'E-' 'e-'
 'xx'/'xx' - ,

5.3

DDE

" (.2). " "
 DDE "Value / "



.2

DDE

6

?

6.1

No data for publication -

Error on binding variable with name %s [%s] -

Error on items formation (%s) –

Unable to connect to %s. (%s) –

Unable to disconnect from %s. (%s) –

(, ,).

support@aggsoft.ru.

"%s"