

Advanced Serial Data Logger

1		1
1	Advanced Serial Data Logger	1
2	2
2	,	3
1	3
2	4
3	5
4	5
3		5
1	5
2	6
4		6
1	6
2	8
3	11
4	12
	(COM)	12
	16
	-	18
	-	18
	-	20
	21
	21
	21
	OPC.....	24
5	27
6	28
7	28
8	Windows NT/2000/XP/Vista	30
	30
	Windows Vista	33
9	34
10	35
5	?	35
1	35

Advanced Serial Data Logger

Advanced Serial Data Logger

Windows NT/2000/XP,

: <http://www.aggsoft.ru/>

: <http://www.aggsoft.ru/serial-data-logger.htm>

: <http://www.aggsoft.ru/rs232-pinout-cable/>

1.2

ASCII -

ASCII

(, README.TXT).

Windows
ASCII. ASCII

*.TXT

Binary File -

ASCII (0 255).

Bytes () -

Bit () -

8

()

:0 1. 8

Baud Rate -

(),

BPS

),

600

, 2400 bps (

Cable () -

COM port -

4

IBM IBM-
COM1, COM2, COM3 COM4.

Data bits -

(),

Flow control -

Handshaking -

Internet () - TCP/IP

PC () - Personal Computer ().

Ports () -

Protocol () -

RS232, RS423, RS422 RS485 - Electronics Industry Association (EIA)
RS232, RS423, RS422, RS485,
EIA "RS"
(recommended standard).
"EIA".

Stop bits () -
1 2.

2

2.1

Copyright © 1999-2007 AGG Software.
All Rights Reserved

1. Advanced Serial Data Logger

2.

3. Advanced Serial Data Logger
- 4.
5. Advanced Serial Data Logger sales@aggsoft.ru
6. Advanced Serial Data Logger
Advanced Serial Data Logger
7. **Advanced Serial Data Logger** "AS IS".
- 8.
9. Advanced Serial Data Logger
10. -
Advanced Serial Data Logger
Advanced Serial Data Logger.

2.2

shareware-

[5](#)

- 21
- ;
- ;
- 100 ;
- 65535

2.3

shareware-

Internet,

2.4

Advanced Serial Data Logger	support@aggsoft.ru
	support@aggsoft.ru
	sales@aggsoft.ru

3

3.1

- Windows 95 (
- Windows 95 OSR2;
- Windows 98;
- Windows Me.

- Windows NT4 (SP4)).
- Windows 2000 Professional;
- Windows 2000 Server;
- Windows XP x86 x64;
- Windows 2003 Server x86 x64;
- Windows Vista () x86 x64.

Internet Explorer 5.0

COM-

3.2

Advanced Serial Data Logger.

, Advanced Serial Data Logger
Advanced Serial Data Logger"

"/Programs Files/

Advanced Serial Data Logger

4

4.1

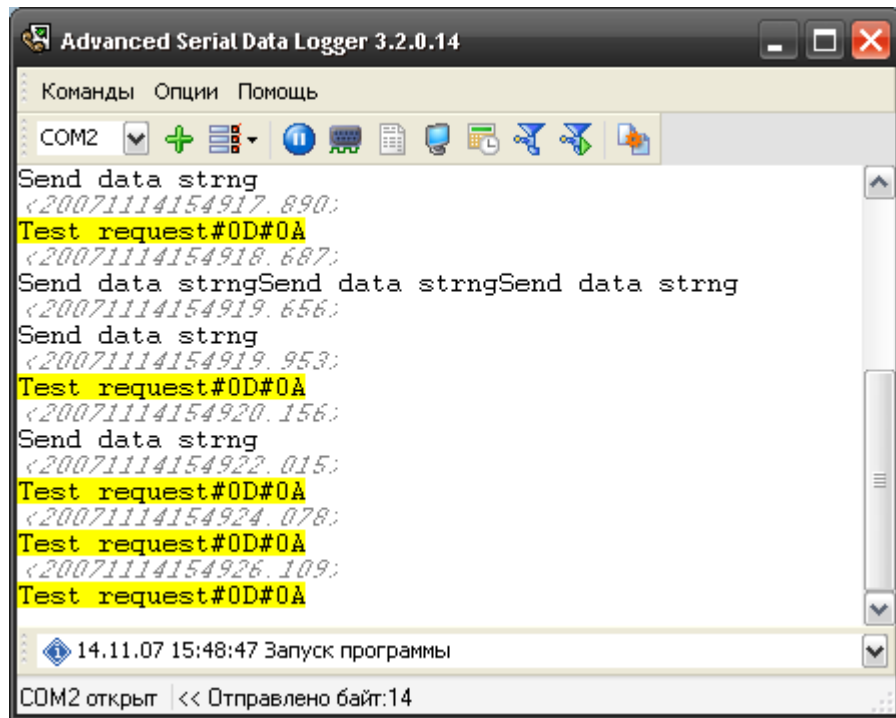
Advanced Serial Data Logger

Advanced Serial Data Logger

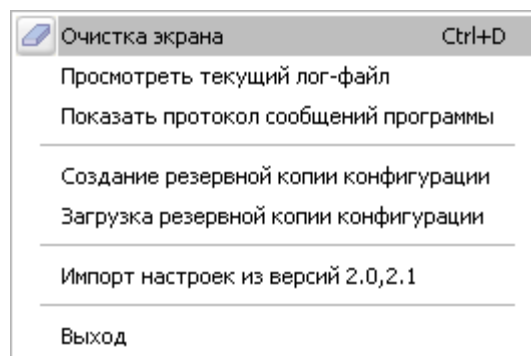
" "

() (.1),

" / ..."), 8 (.2)



.1



.2.

C:\.

8

1-2-3-4-5

1.

" 21

2.

COM " " 12

3. Configure log file.

Select the "Log file" header in the port options dialog window and enable logging for a necessary data direction.

4. " " 21

5. Advanced Serial Data Logger

Advanced Serial Data Logger

4.2

- RS-232 (
- RS-485);
- " (-),
- COM - ;

12 " "

18

20

(.16).

"16",
Advanced Serial Data Logger

27.

Serial Data Logger. Advanced Serial Data Logger
21 (plug-ins),

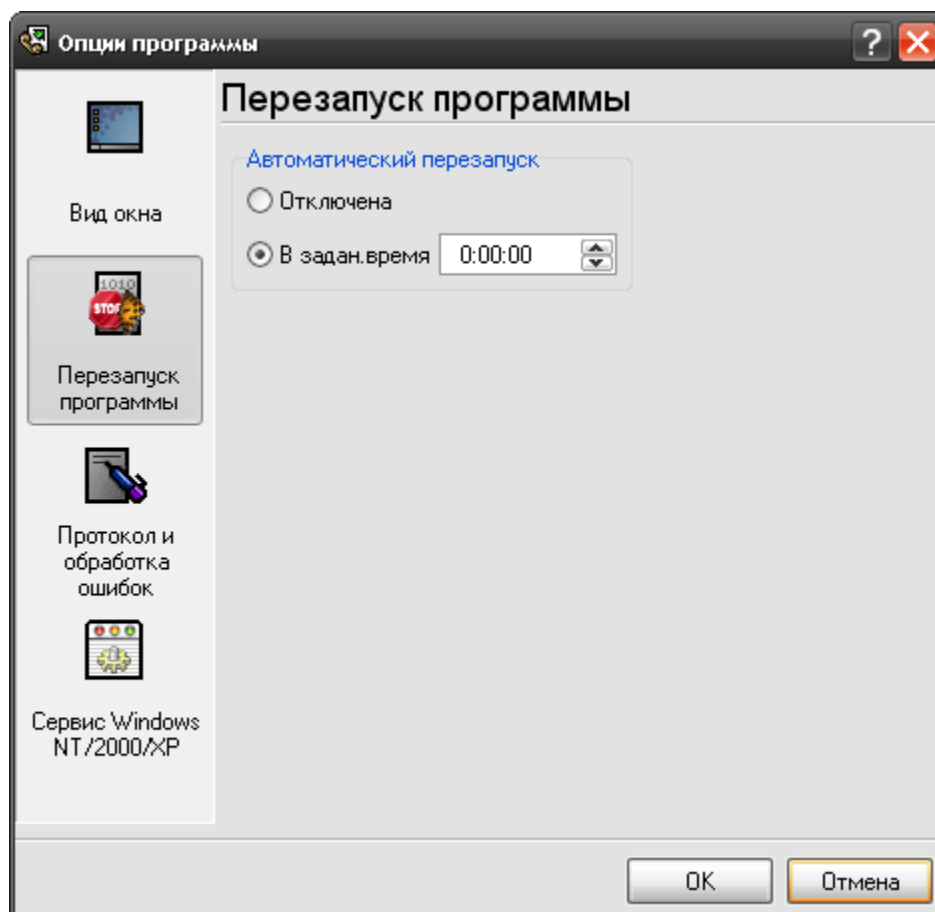
Advanced

"21".

28 (

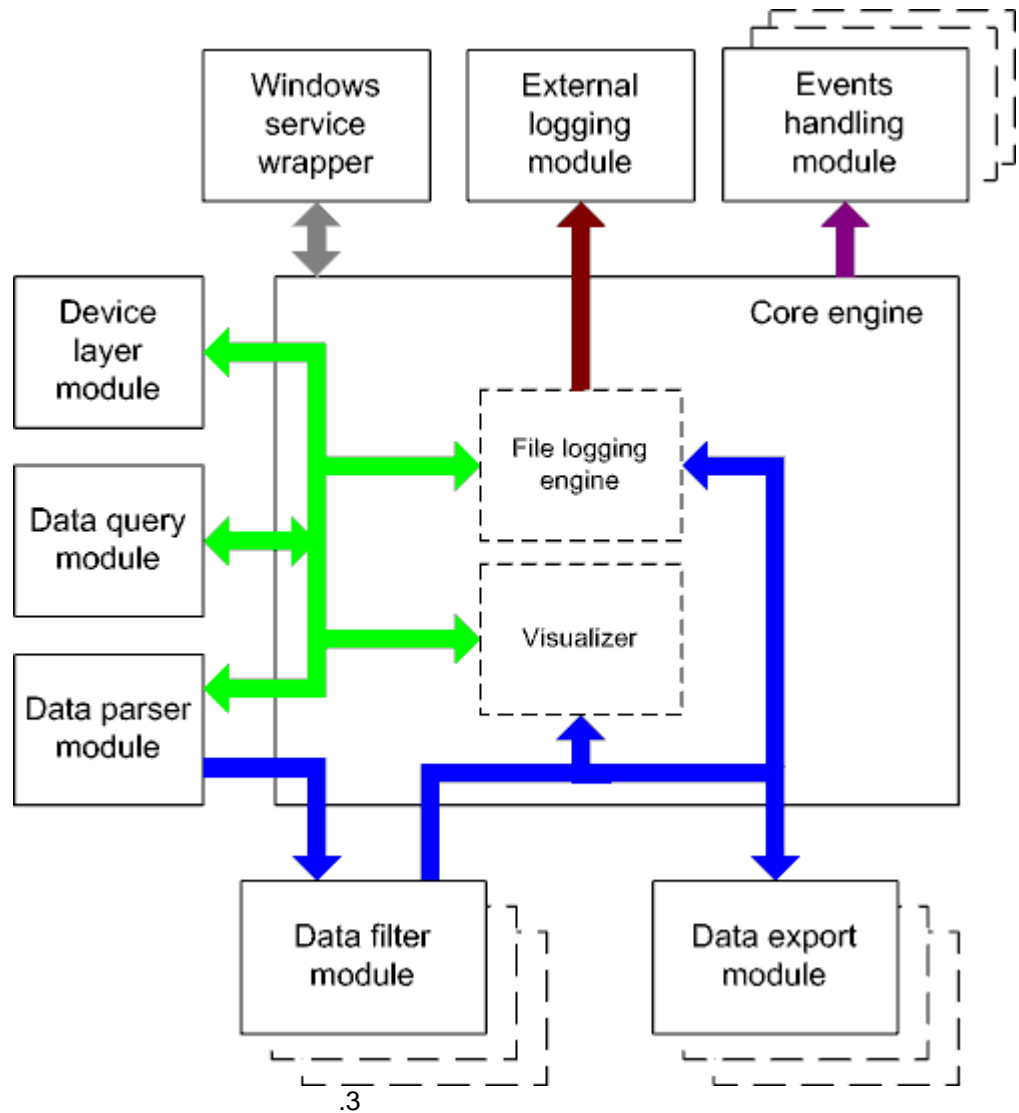
(.16)

),



.3

4.3



- - ()
- - ()

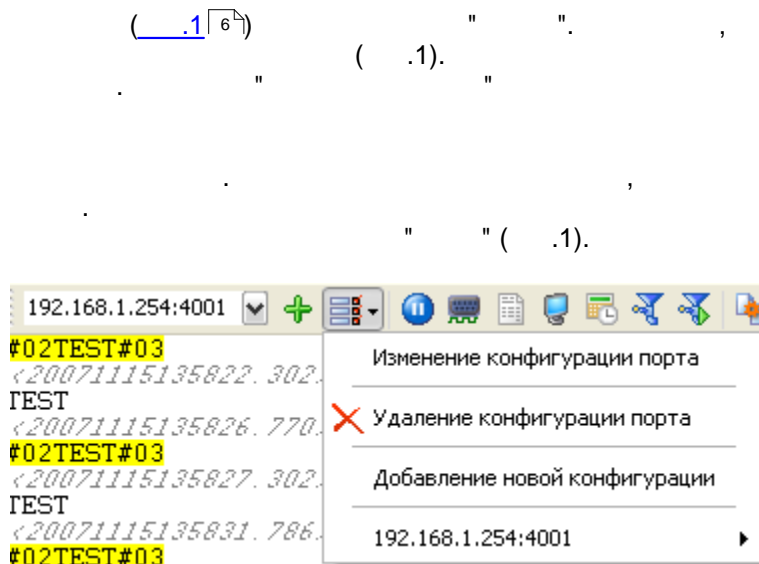
• Core engine -

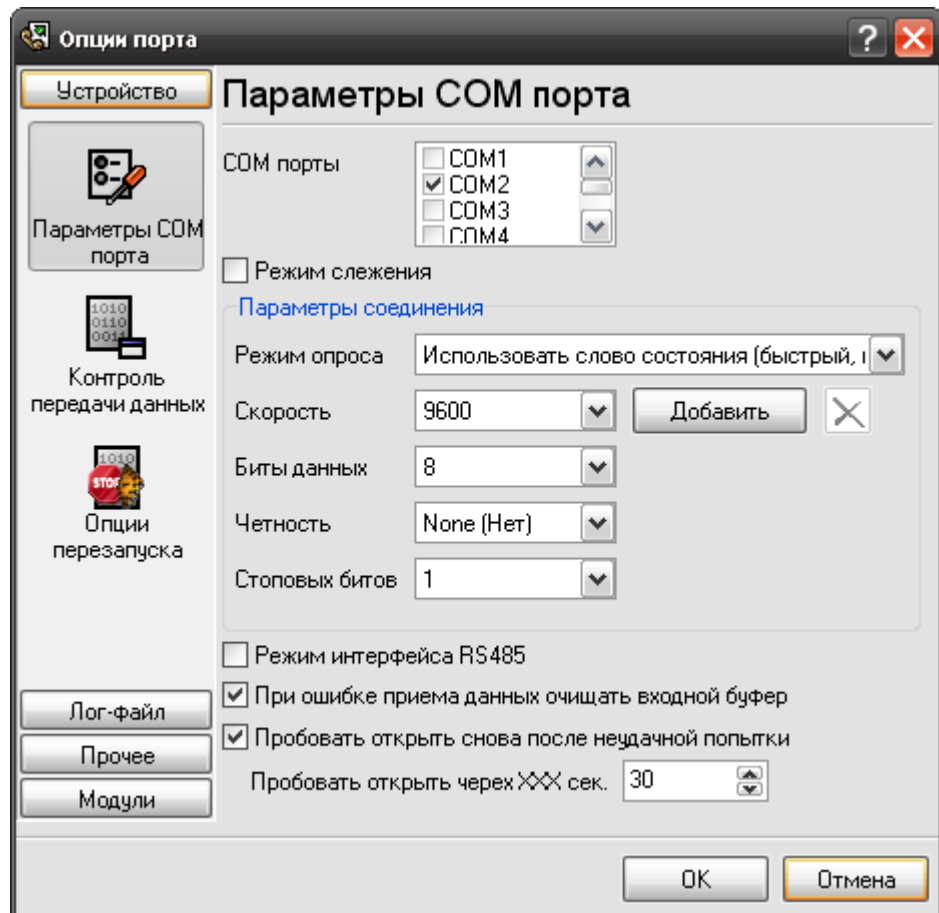
- Device layer module -
- Data query module -
- Data parser module -
- Data filter module -
- Data export module -
- Visualizer -
- File logging engine -
- Windows service wrapper -
- External logging module -
- Events handling module -

4.4

4.4.1

(COM)





.5 COM-

RS-485

RTS-

API-

Windows

: API-

Windows.

API,

Windows

API

API -

Data Logger

. Advanced Serial

(WRPI.DRV

),

10% Xon.

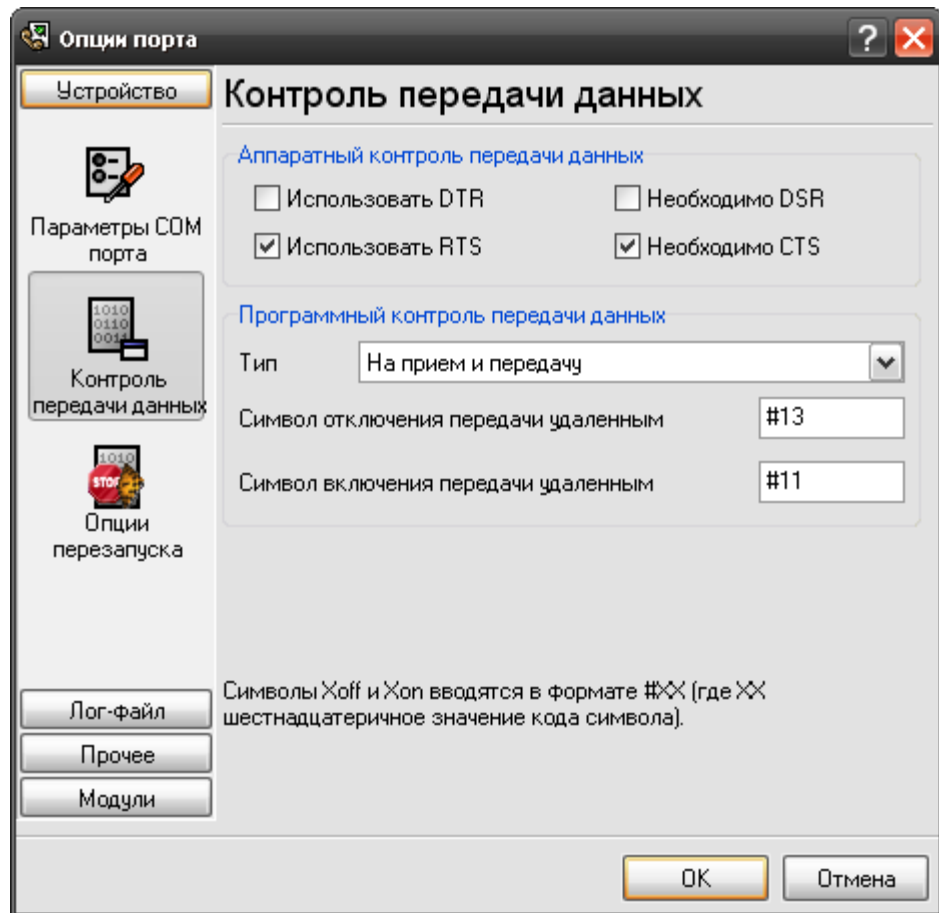
" " " " " "

" " 10% 90%

Xoff. Xon

)

0x11 0x13 - COM-



.6

Advanced Serial Data Logger

```

COM-
COM-
Advanced Serial Data Logger,
COM-
Advanced Serial Data Logger.
UART (UART receiver parity error) -
;
UART (UART receiver overrun),
UART (UART receiver framing error) -
;
CTS (transmit timeout waiting for CTS),
DSR (transmit timeout waiting for DSR),
RLSD (transmit timeout waiting for RLSD) -
;
;
Logger (transmit queue is full) - ; Advanced Serial Data
;
break (break condition received)

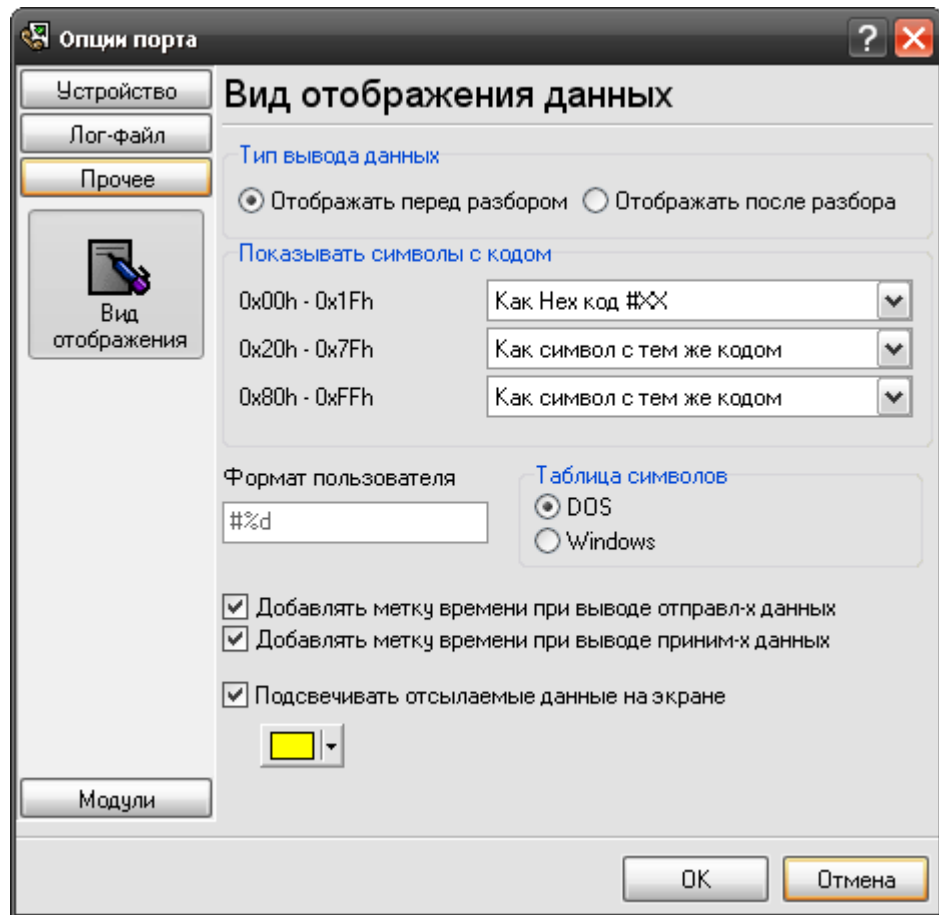
```

4.4.2

```

1.
2.
( .1 | 6)
2 ( .7):

```



.7.

" / "

, :

1.

Hex-

2.

%d

, %x -

3.

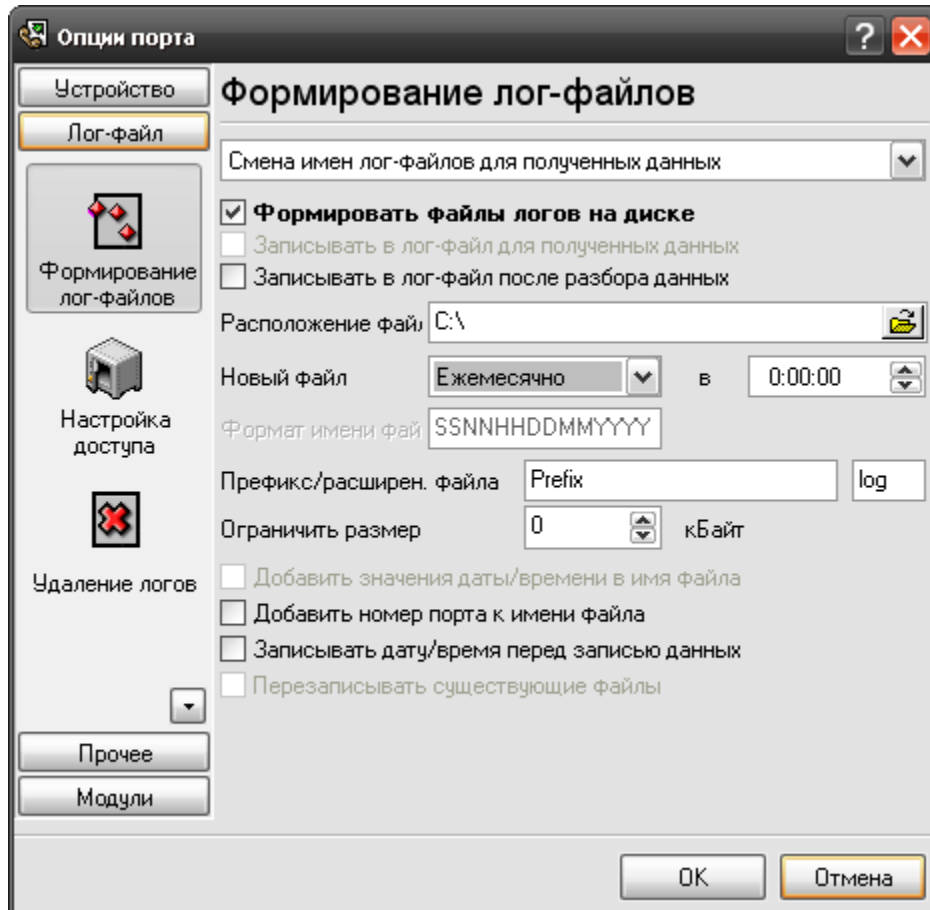
4.

4.4.3

4.4.3.1

COM

(.1).



.8.

"OK".

Advanced Serial Data Logger

"log ",

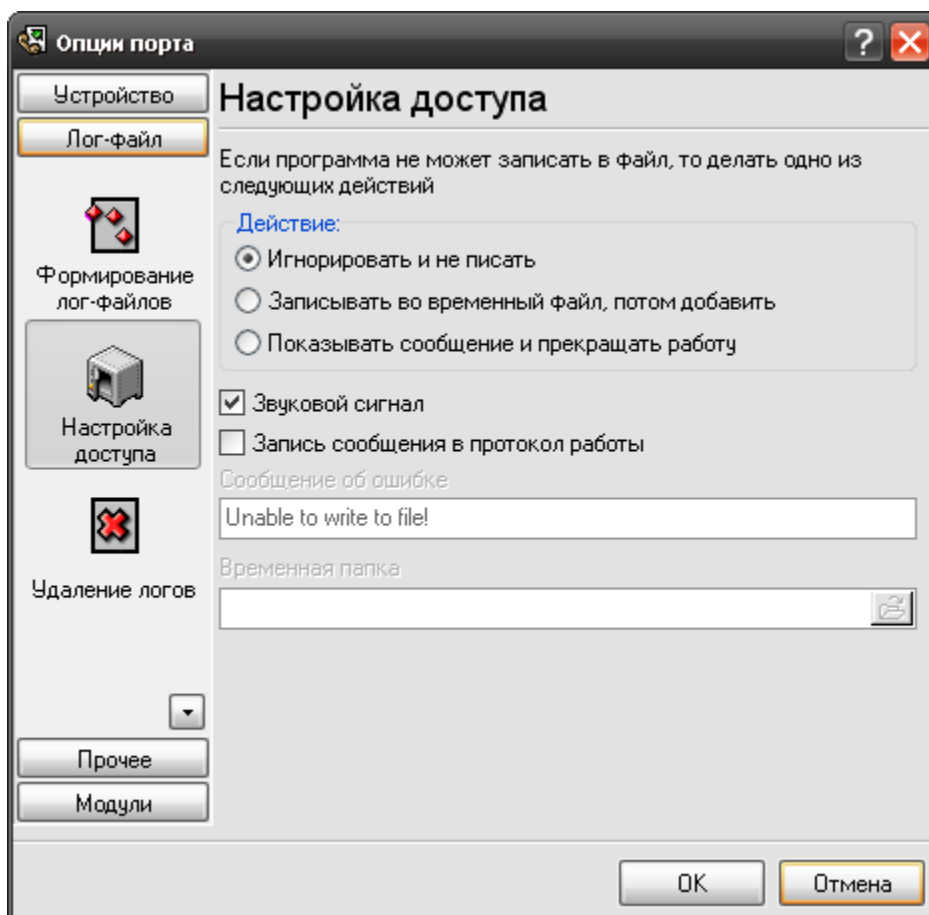
"sample",

"sampleYYYYMMDD.log". 21-

yyyy - (0000 - 9999);
h - (0 - 23);
hh - (00 - 23);
n - (0 - 59);
nn - (00 - 59);
s - (0 - 59);
ss - (00-59).
:
"sample_log", "txt".
:
= sample_log_, = txt (!).
HHDDMMYYYY.

4.4.3.2

(.1).
Microsoft Office (, Microsoft Word), Advanced Serial Data Logger



.9.

Advanced Serial Data Logger

•

•

•

4.4.3.3

4.4.4

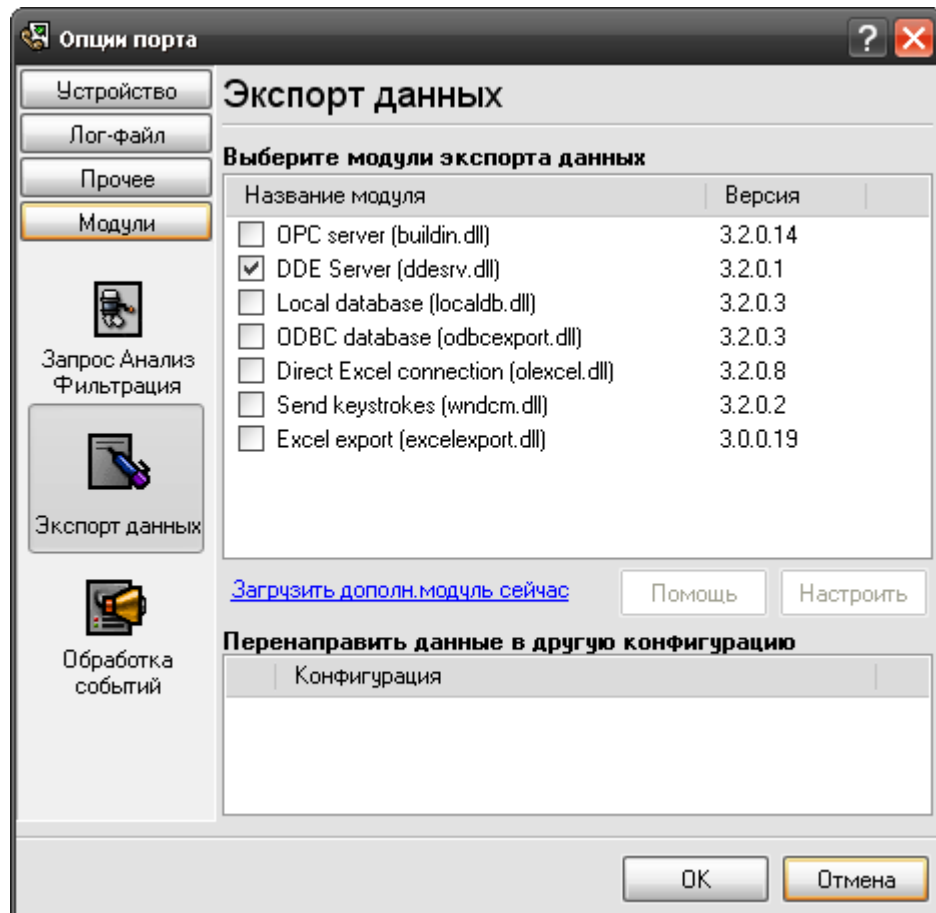
4.4.4.1

(.10-12).

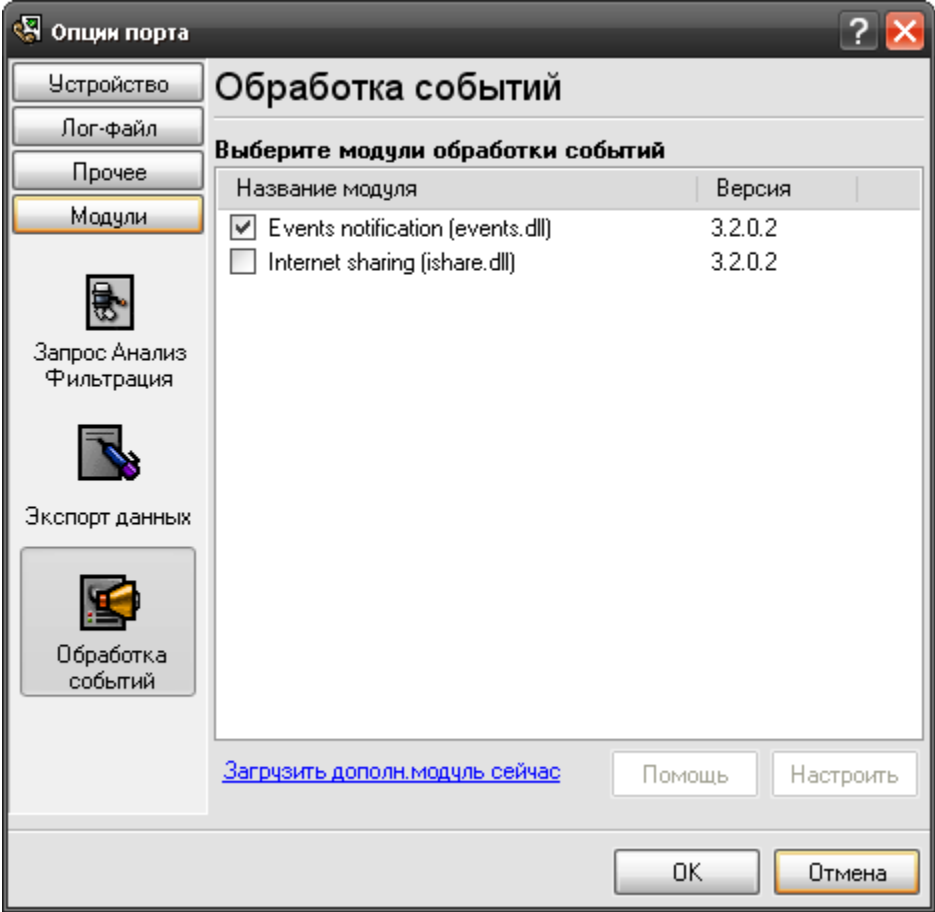
),

Advanced Serial Data Logger

•



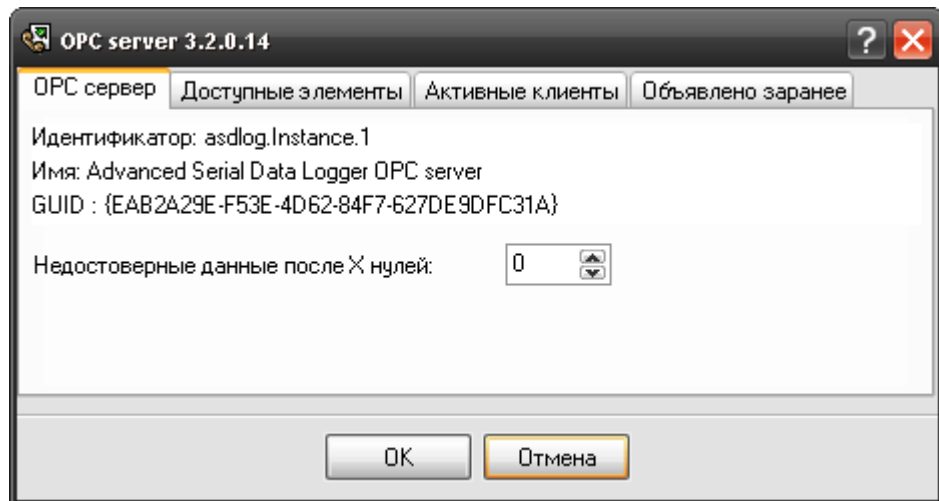
.11



.12

4.4.4.2 OPC

Advanced Serial Data Logger OPC. Advanced
Serial Data Logger OPC
OPC (.1).
www.opcfoundation.org (OPC Core Components Redistributable)

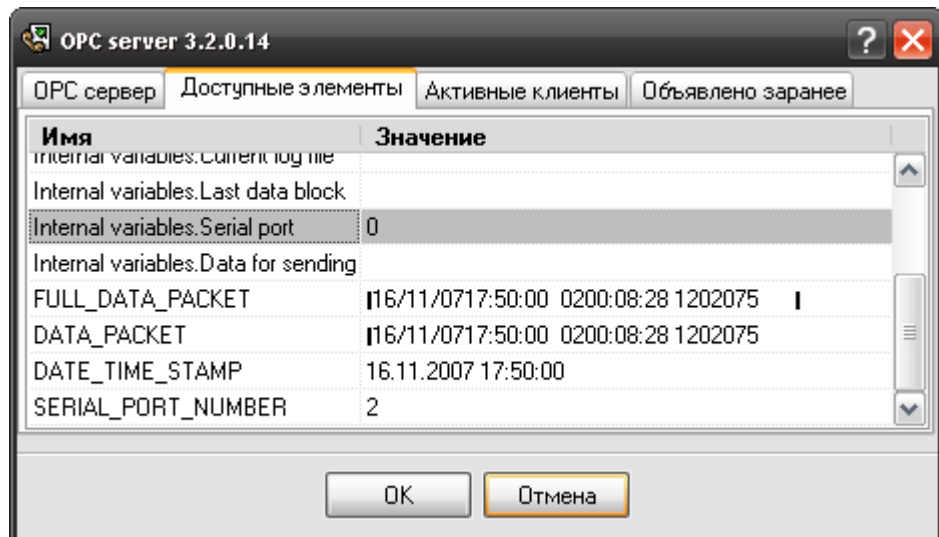


.1 OPC

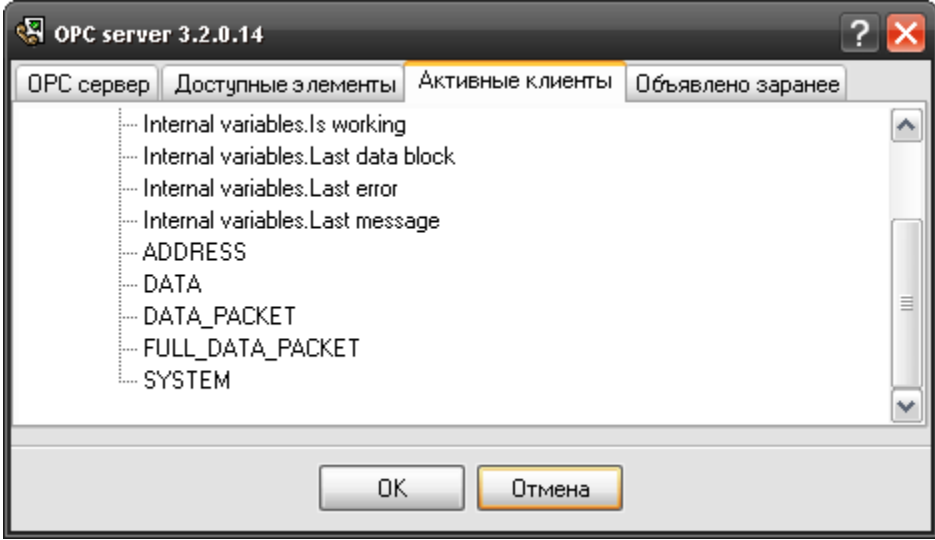
Advanced Serial Data Logger,

OPC (.2).

OPC



.2 OPC



.3.

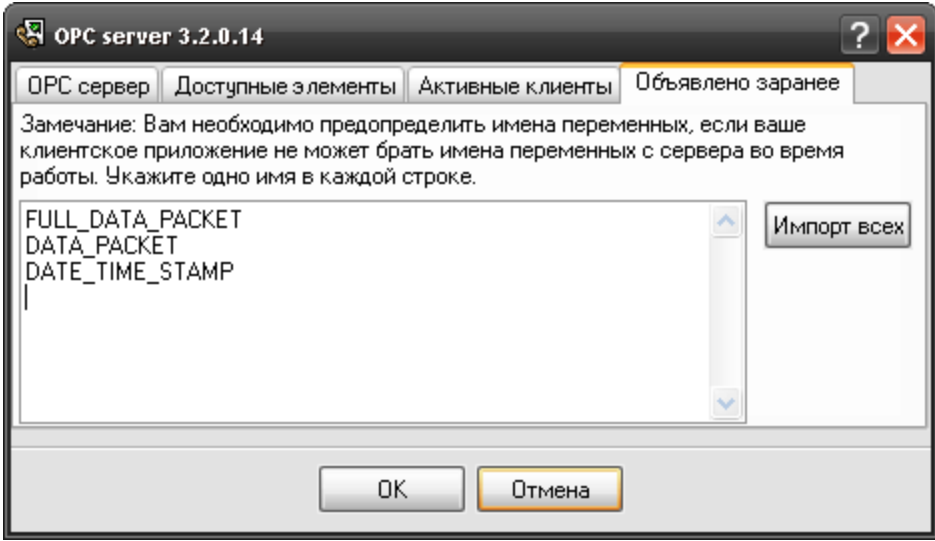
Advanced Serial Data Logger " " . Advanced Serial Data Logger

OPC

(.4).

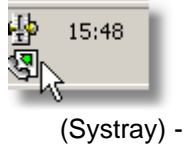
OPC

OPC



.4.

- - Windows 2000 Windows XP
- - , -



4.6

Windows NT

" ' -> " _____ 12

4.7

(). " ' (.1). +

.log.

Advanced Serial Data Logger

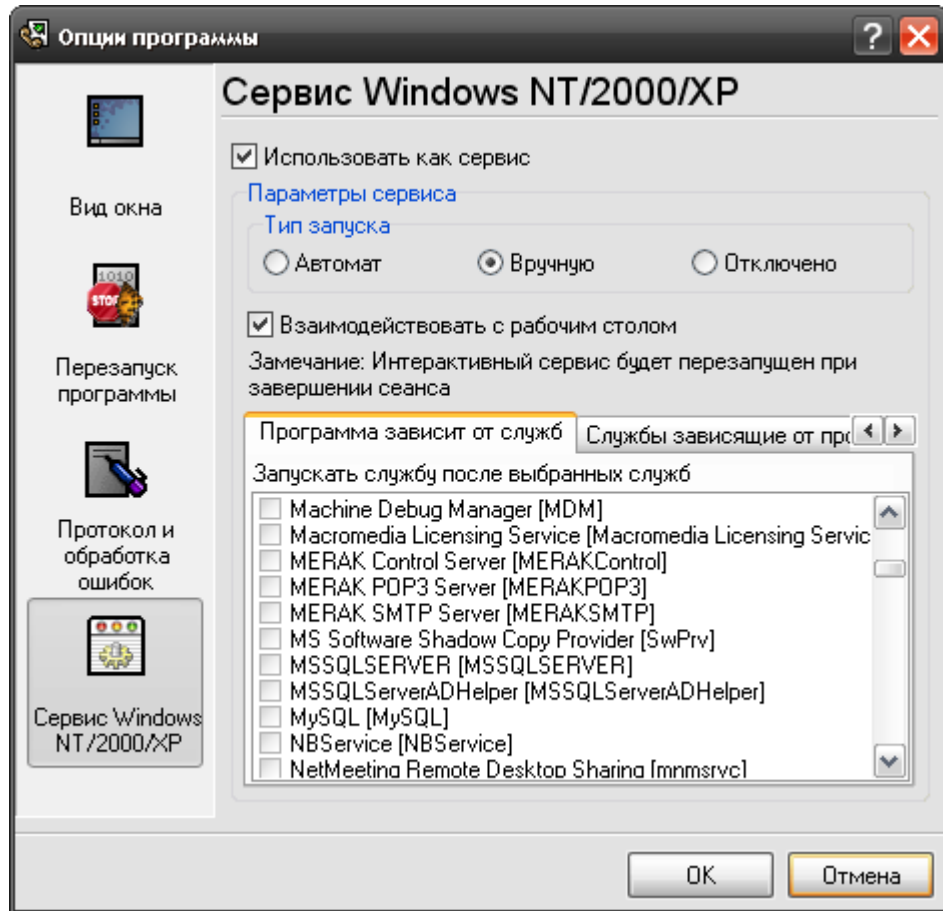
4.8 Windows NT/2000/XP/Vista

4.8.1

Windows NT/2000/XP :

- Windows NT 4.0;
- 2000); (Windows
- Windows 2000 - (
-);
-

Windows NT/2000/XP" (.1).



.1

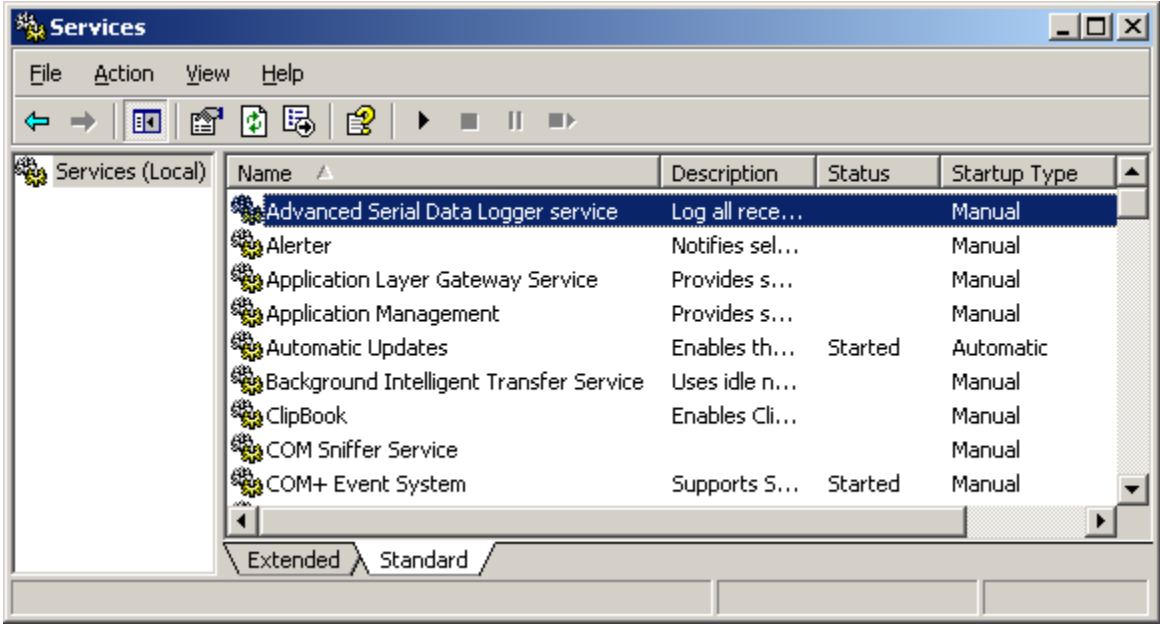
1. - ; Windows
 2. - ;
 3. - ;
- " ;
- " (.2).
- " , . . Windows



.2

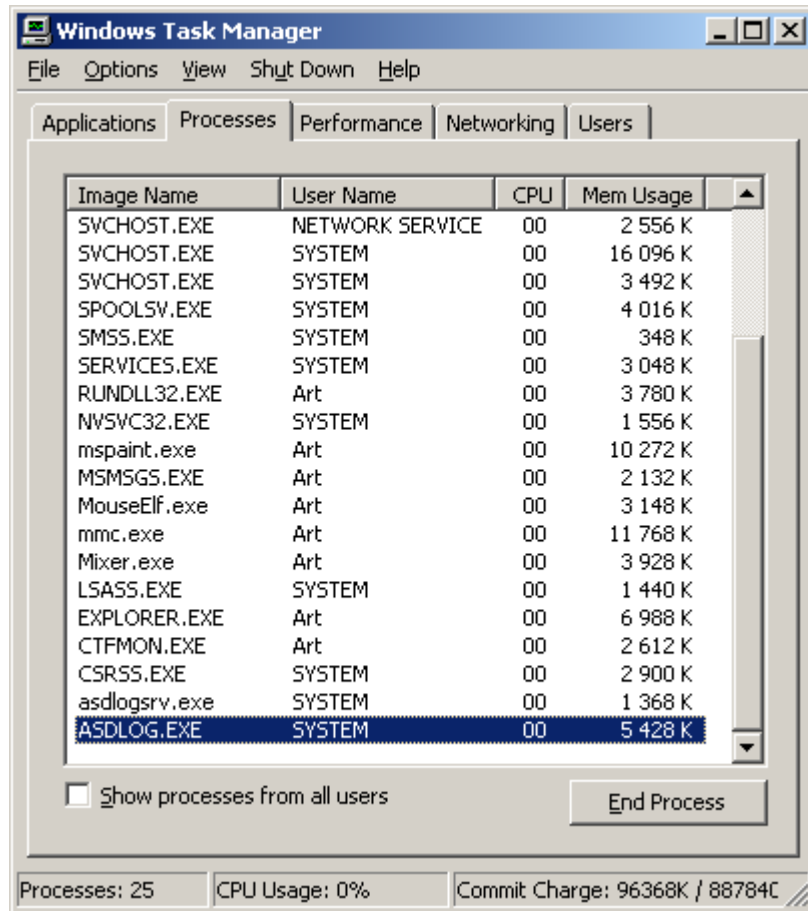
- COM- ,
- Advanced Serial Data Logger "
- " (.1).

(.3).



.3 (Windows 2000)

.4). Advanced Serial Data Logger 2 - asdlogsrv.exe asdlog.exe (Advanced Serial Data Logger, srvary.exe



.4

asdlogsrv.exe

- /? - ;
- /I - ;
- /A - ;
- /D - ;
- /R -

4.8.2

Windows Vista

Windows Vista

4.10

Windows. / COM-

5 ?

5.1

Softlce -

support@aggsoft.ru

5.2

(FAQ)

: COM- ?
 : ' - ().
 DOS , .
 : ?
 : , (DOS
 DOS).
 COM
 : 9
 ?
 : , Windows
 : : DB25 DB9?
 :
 : DB25 - COM2, DB9 - COM1
 : - ?
 : .

RXD	<-->	TXD
TXD	<-->	RXD
GND	<-->	GND

. DTR . ,
7 8 DB9 ' DB25.

<http://www.aggsoft.ru>.

:
? :
COM- ' .
' , ' .