

Accurate Printer Monitor

<b>1</b>		<b>1</b>
1	O Accurate Printer Monitor .....	1
2	.....	2
<b>2</b>	,	<b>3</b>
1	.....	3
2	.....	4
3	.....	4
4	.....	5
<b>3</b>		<b>5</b>
1	.....	5
2	.....	5
<b>4</b>		<b>6</b>
1	.....	6
2	.....	8
3	.....	10
4	.....	11
	.....	11
	.....	15
-	.....	17
	.....	17
	.....	19
	.....	20
	.....	20
	.....	20
	OPC.....	23
5	.....	26
6	.....	27
7	.....	27
8	<b>Windows NT/2000/XP/Vista .....</b>	<b>29</b>
	.....	29
	<b>Windows Vista .....</b>	<b>32</b>
9	.....	33
10	.....	34
<b>5</b>	<b>?</b>	<b>34</b>
1	.....	34





! .  
Accurate Printer Monitor,  
!

- 
- 

: <http://www.aggsoft.ru/>  
: <http://www.aggsoft.ru/printer-monitor.htm>

## 1.2

**ASCII** - ASCII  
- , Windows  
ASCII. ASCII \*.TXT  
( , README.TXT).

**Binary File** - ,  
ASCII ( 0 255).

**Bytes** ( ) - , ,

**Bit** ( ) - . :0 1. 8  
8 ( ) .

**Cable** ( ) - ,

**Client/Server** ( / ) - ,  
( , ).

**Internet** ( ) - , TCP/IP

**PC** ( ) - Personal Computer ( ).

Ports ( ) -

Protocol ( ) -

(Log file) - ( .log) —

## 2

### 2.1

Copyright © 1999-2009 AGG Software.  
All Rights Reserved

1. Accurate Printer Monitor -
- 2.
3. Accurate Printer Monitor ,
- 4.
5. Accurate Printer Monitor  
sales@aggsoft.ru
6. Accurate Printer Monitor ,  
Accurate Printer Monitor
7. **Accurate Printer Monitor** "AS IS".
- 8.



## 2.4

Accurate Printer Monitor	<a href="mailto:support@aggsoft.ru">support@aggsoft.ru</a>
	<a href="mailto:support@aggsoft.ru">support@aggsoft.ru</a>
	<a href="mailto:sales@aggsoft.ru">sales@aggsoft.ru</a>

## 3

### 3.1

- Windows 95 ( ); comctrl.dll,
- Windows 95 OSR2;
- Windows 98;
- Windows Me.

- Windows NT4 (SP4 ).
- Windows 2000 Professional;
- Windows 2000 Server;
- Windows XP x86 x64;
- Windows 2003 Server x86 x64;
- Windows Vista ( ) x86 x64.

Internet Explorer 5.0

### 3.2

Accurate Printer Monitor.

Accurate Printer Monitor      "/Programs Files/Accurate  
Printer Monitor"

Accurate Printer Monitor

4

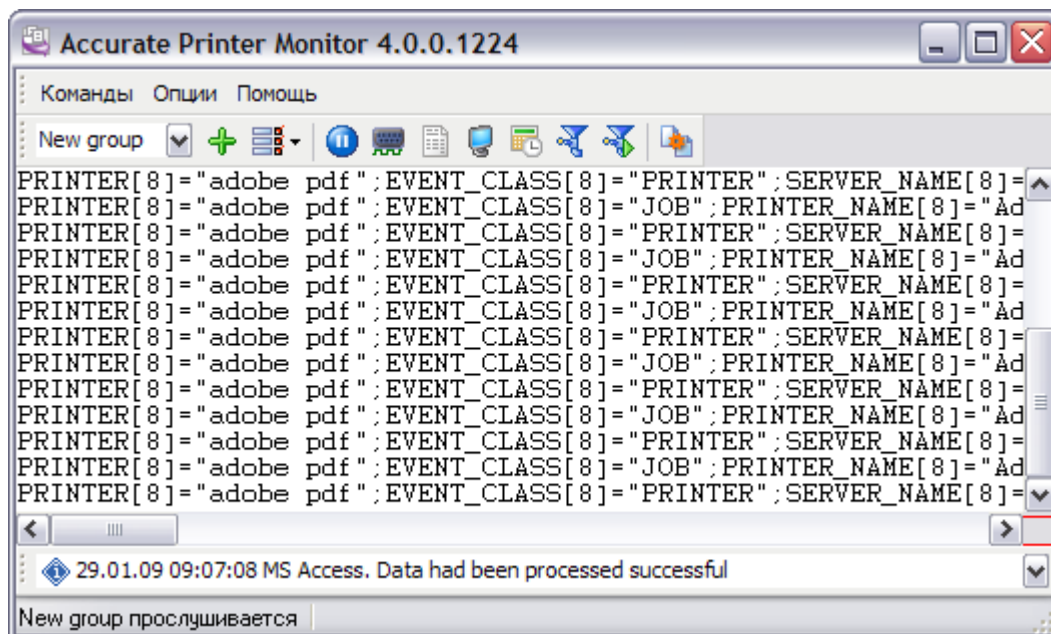
4.1

Accurate Printer Monitor

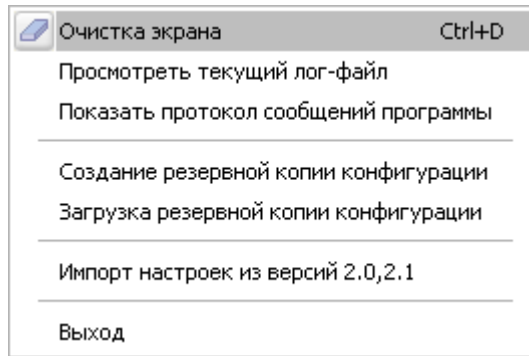
Accurate Printer Monitor

( ) ( .1),

" ( .2)



.1



.2. " "

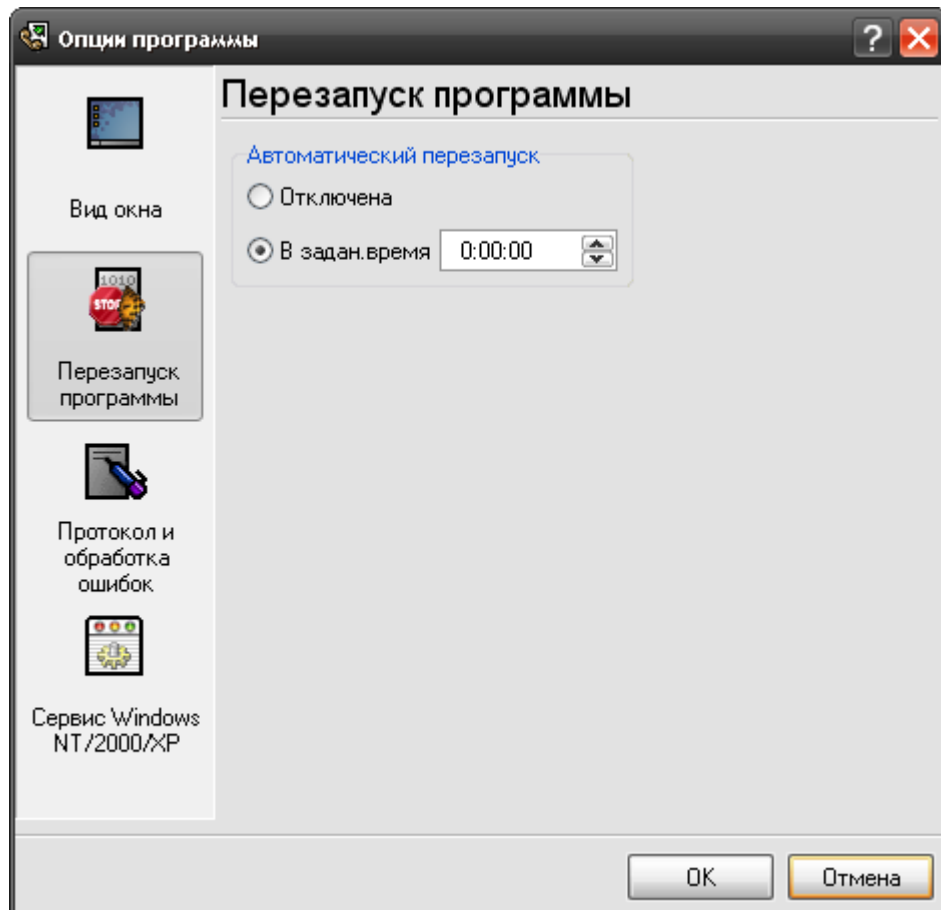
C:\. , , 8

### 1-2-3-4-5

1. :  
" 20
2. :  
" " " "
3. .
4. , 20  
" "
5. Accurate Printer Monitor  
Accurate Printer Monitor

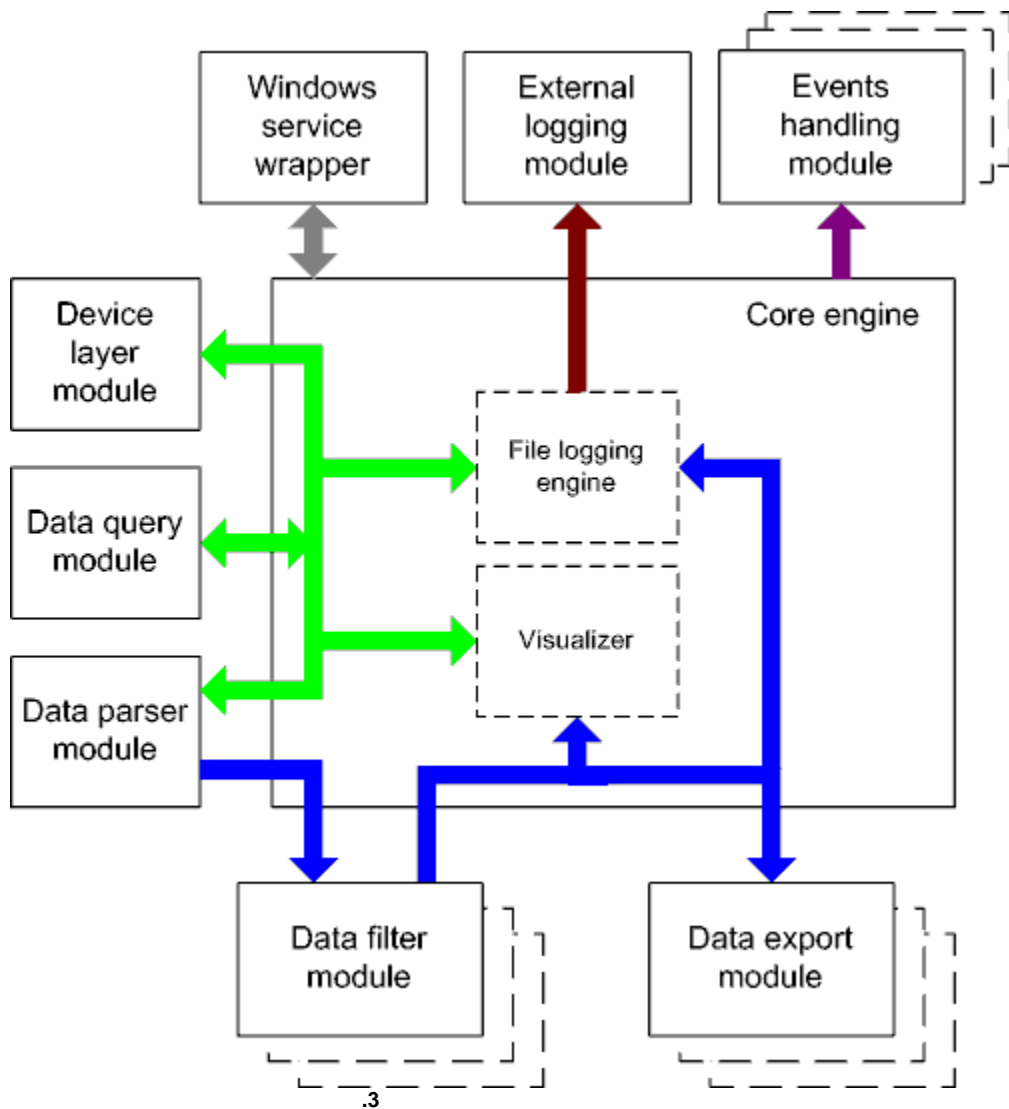
4.2

\_\_\_\_\_<sup>17</sup>  
 \_\_\_\_\_<sup>19</sup>  
 " \_\_\_\_\_<sup>15</sup>",  
 Accurate Printer Monitor \_\_\_\_\_<sup>26</sup>  
 \_\_\_\_\_<sup>20</sup> Accurate  
 Printer Monitor. Accurate Printer Monitor  
 (plug-ins),  
 " \_\_\_\_\_<sup>20</sup>".  
 \_\_\_\_\_<sup>27</sup> ( \_\_\_\_\_<sup>6</sup>), \_\_\_\_\_



.3

4.3

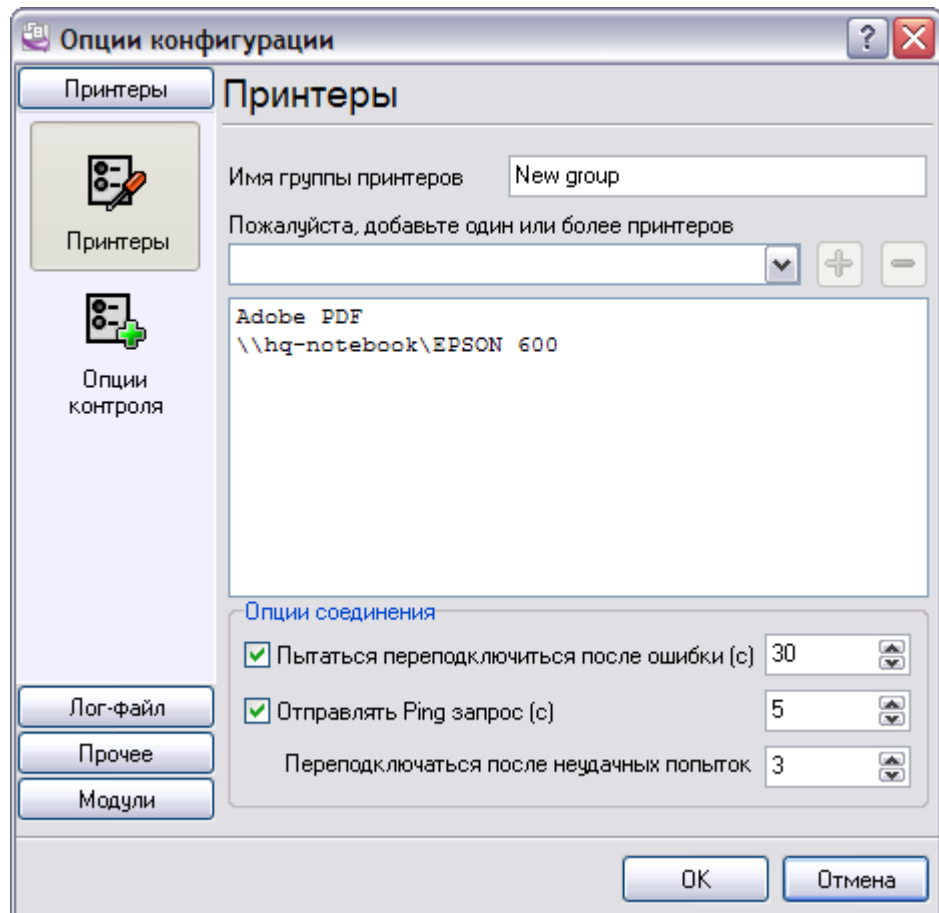


- - ( ).
- - ( ).

- Core engine -



" " " .  
" .  
' " " .  
'  
( ) :\\ \_ \ \_ ,  
- - IP  
- -  
1:  
2:  
Windows NT  
Windows 9x,  
( , MSSQL MySQL).



.5

### Ping

Ping (ICMP ECHO).

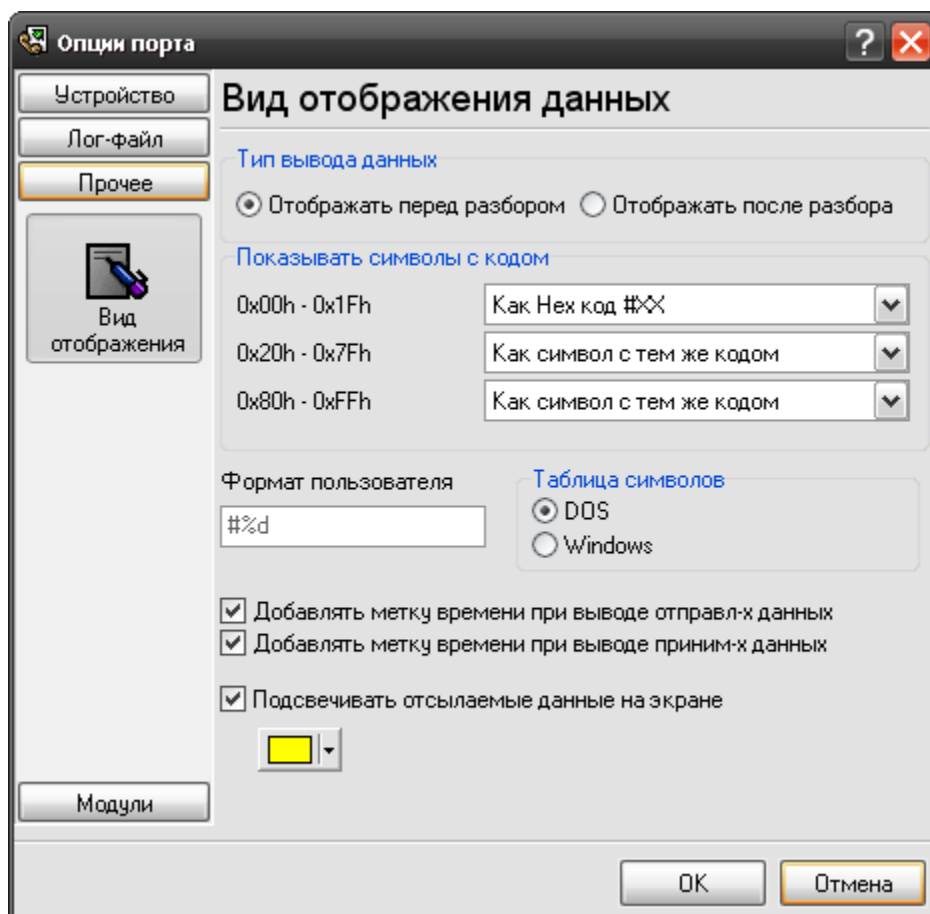
" (.6)



CSV Microsoft Excel.

### 4.4.2

1. ( .1 6 ) 2 ( .7):
- 2.



.7.

1.

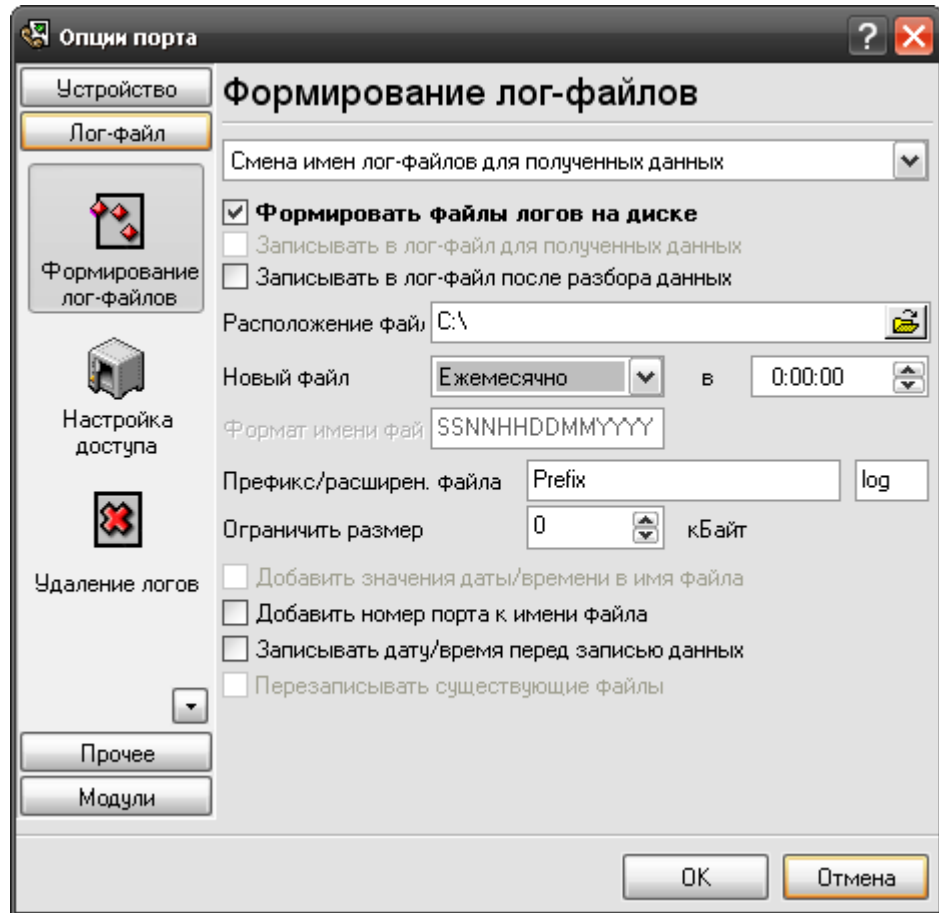
2.

3.

4.

## 4.4.3

## 4.4.3.1



.8.

"OK".

Accurate Printer Monitor

"log",

"sample",

"sampleYYYYMMDD.log". 21-

2003



```

yyyy - (0000 - 9999);
h - (0 - 23);
hh - (00 - 23);
n - (0 - 59);
nn - (00 - 59);
s - (0 - 59);
ss - (00-59).

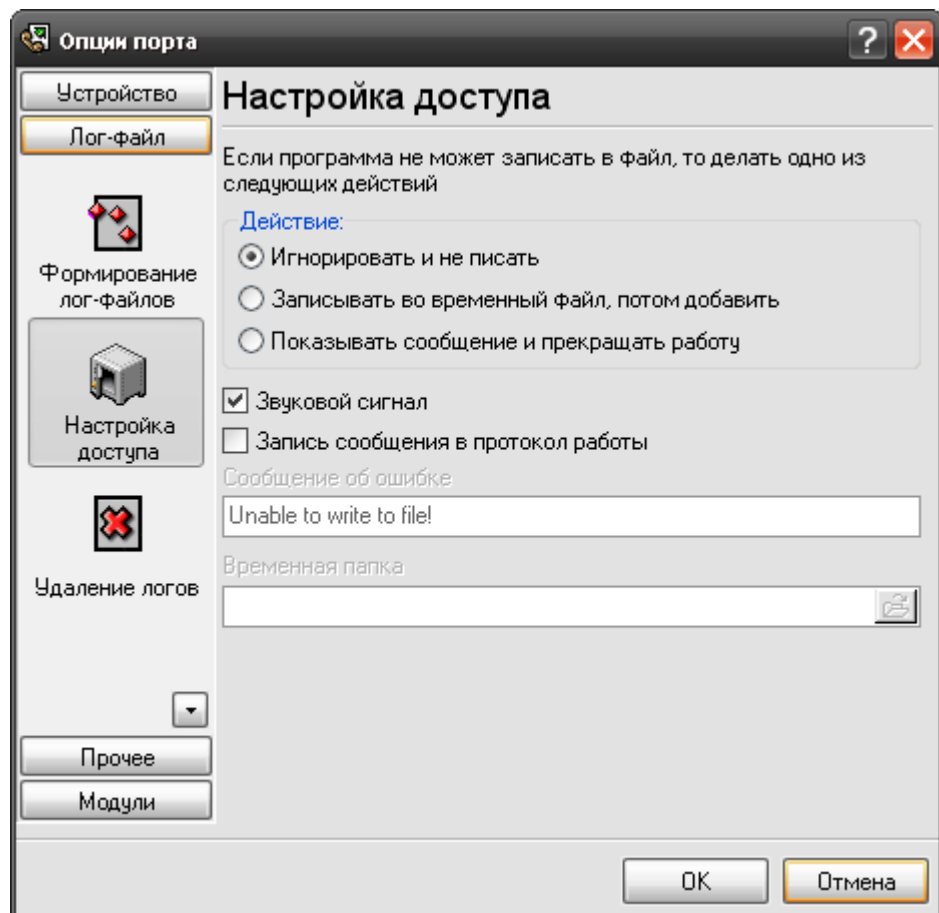
: "sample_log", "txt".

: = sample_log_, = txt ( !).
HHDDMMYYYY.

```

## 4.4.3.2

(.1).  
Microsoft Office ( , Microsoft Word), Accurate Printer Monitor



.9.

Accurate Printer Monitor

:

- ; - ,
- , ; - ,
- ; - ,

4.4.3.3

4.4.4

4.4.4.1

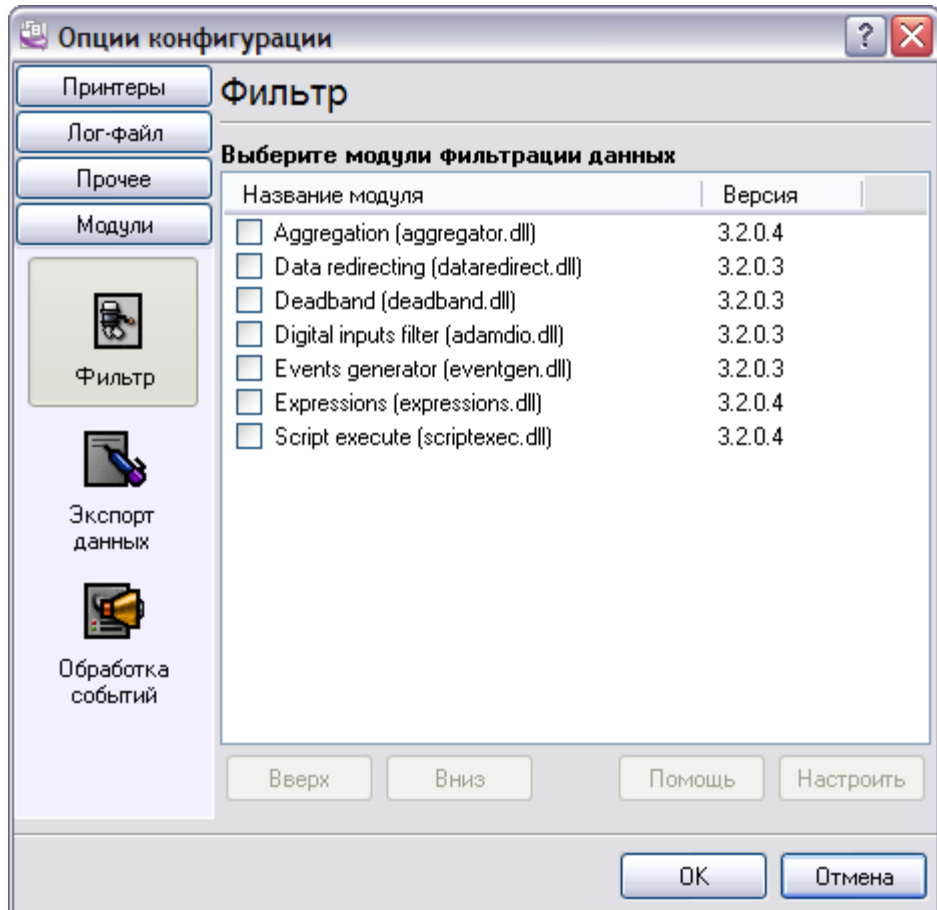
- ( .10-12). ,
- ),

Accurate Printer Monitor

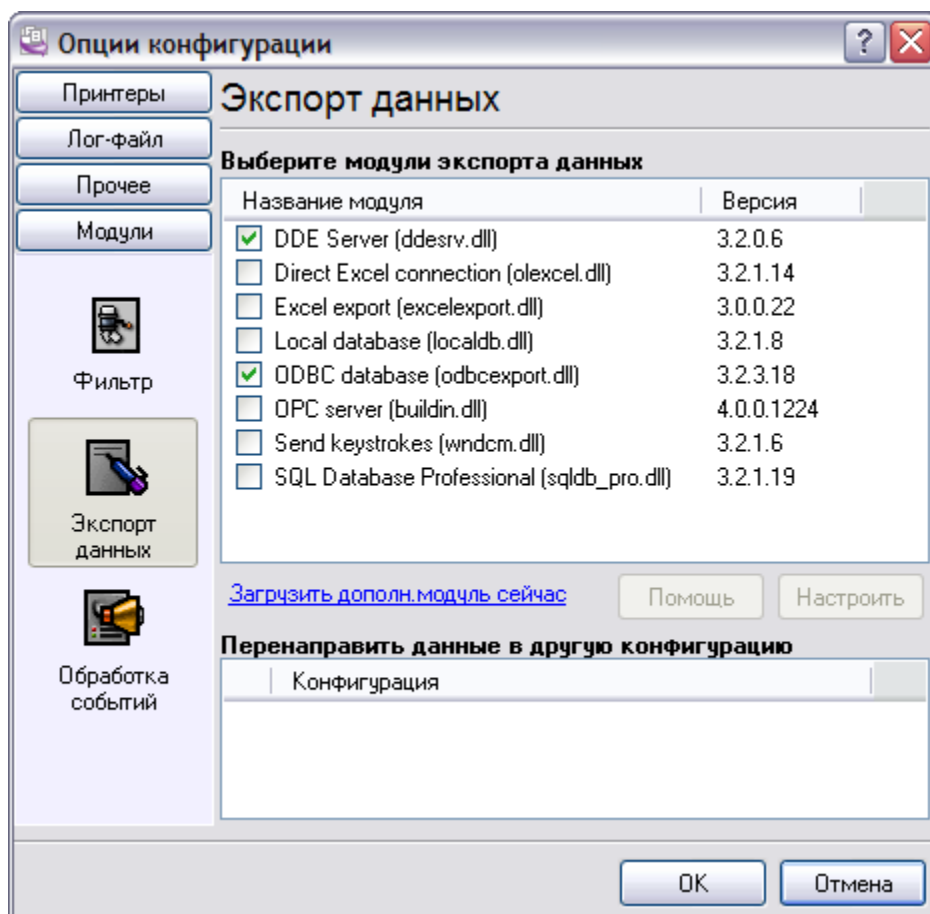
:

- -

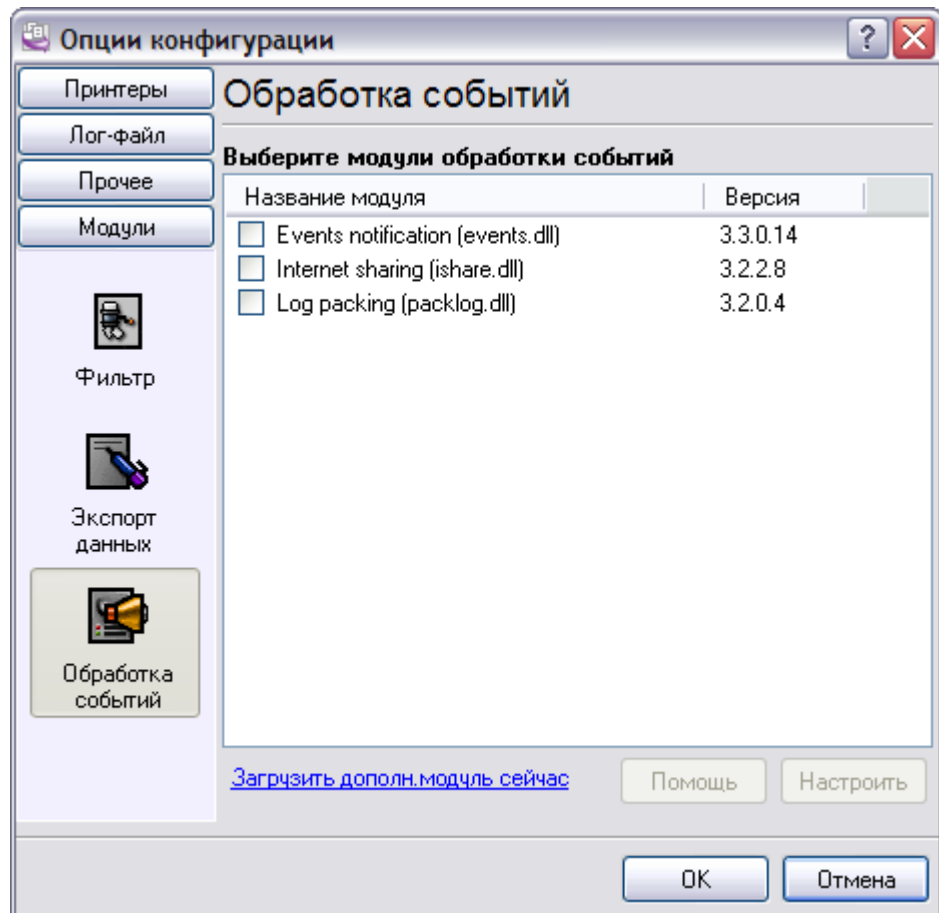
- - Accurate Printer Monitor  
: "Keystrokes",  
; " DDE- ",  
, Dynamic Data Exchange, ODBC Database -
- ( .12) -  
Accurate Printer Monitor.  
( , " " " " ),



.10



.11



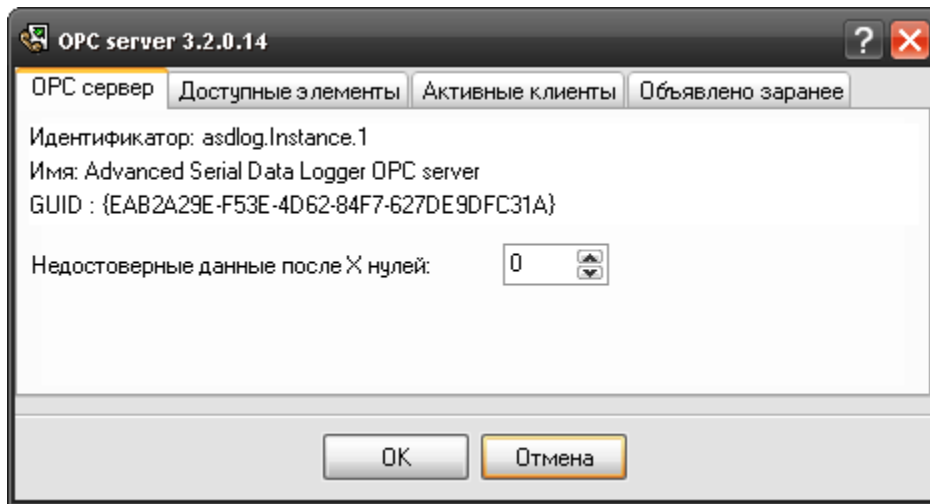
.12

#### 4.4.4.2 OPC

Accurate Printer Monitor  
Printer Monitor

OPC  
[www.opcfoundation.org](http://www.opcfoundation.org) (

OPC.  
OPC Accurate  
(.1).  
OPC Core Components Redistributable  
)

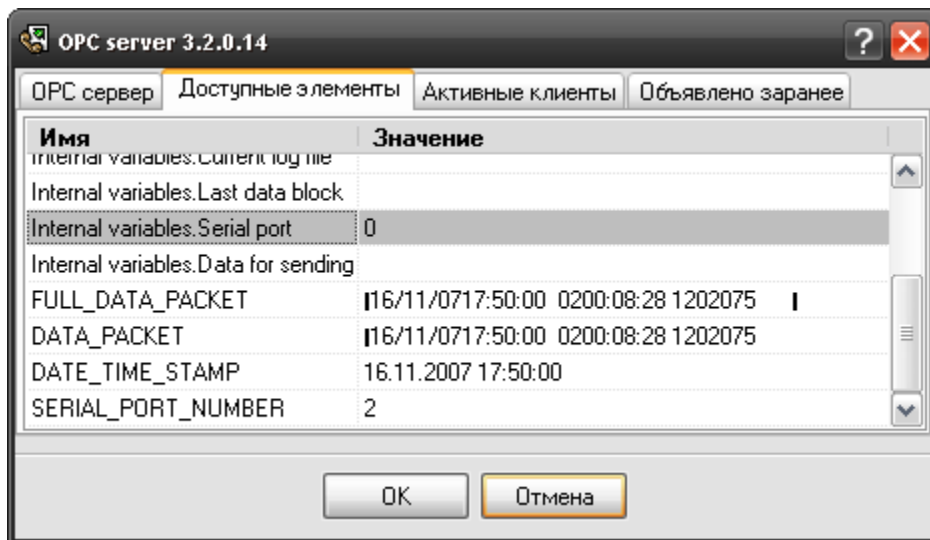


.1 OPC

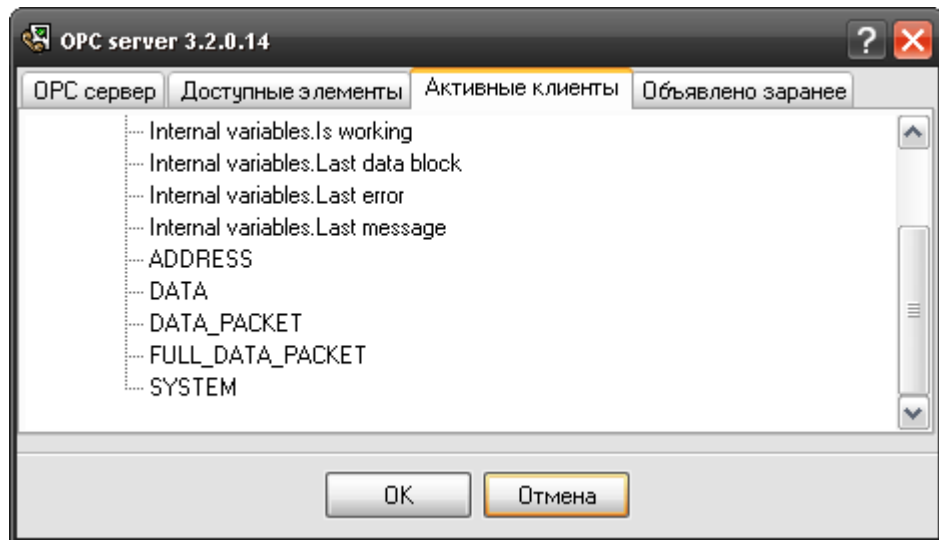
Accurate Printer Monitor,

OPC ( .2).

OPC



.2 OPC



.3.

Accurate Printer Monitor

"

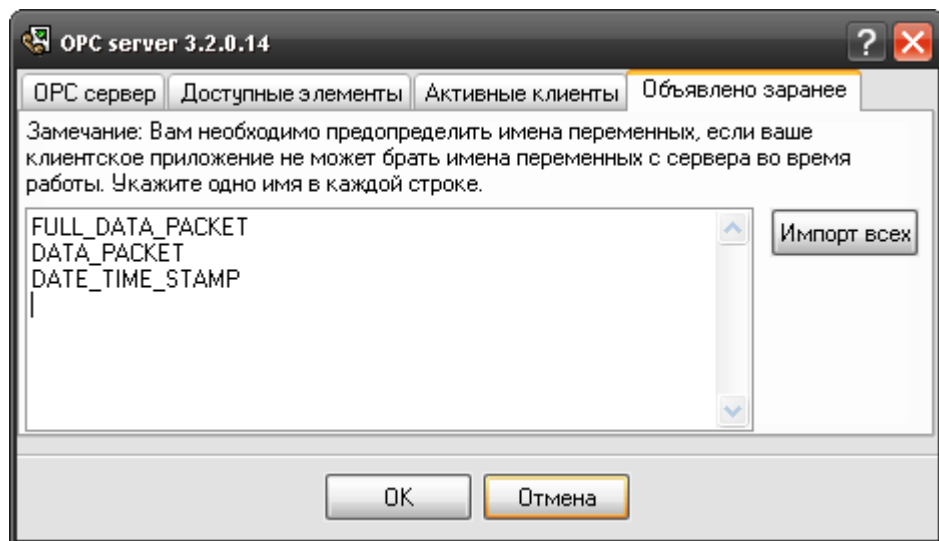
". Accurate Printer Monitor

OPC

( .4).

OPC

OPC



.4.



- - Windows 2000 Windows XP

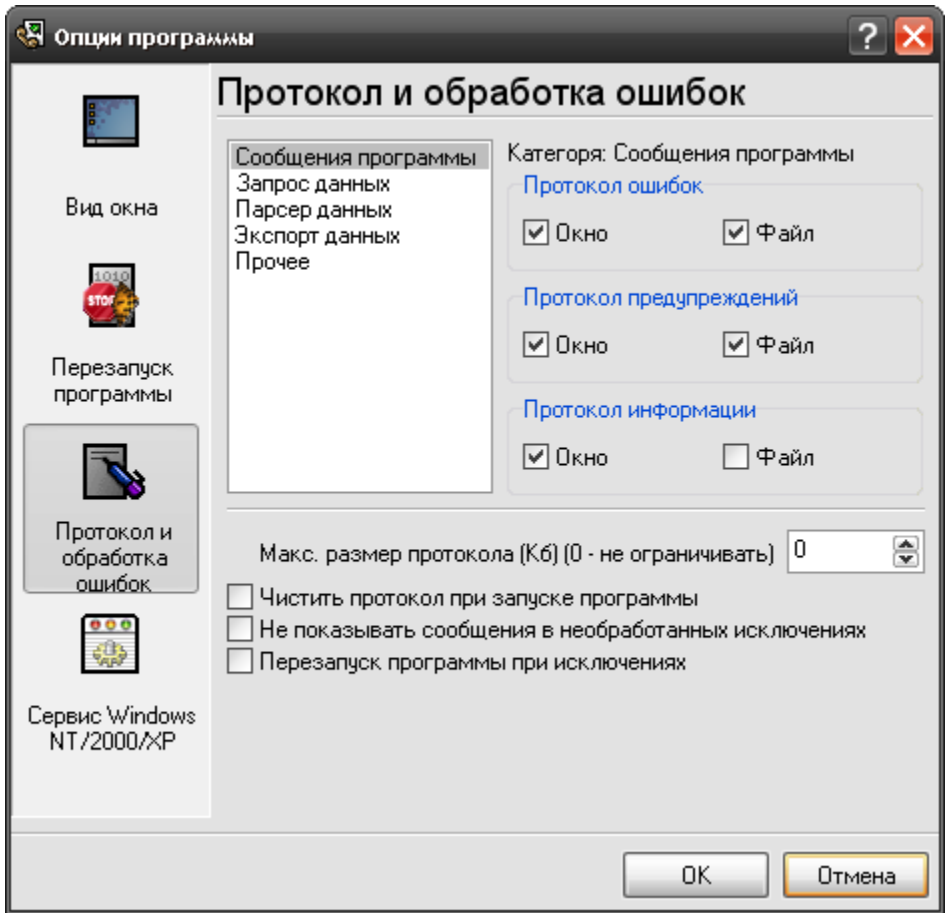


### 4.6

Windows NT

### 4.7

.log.



.1

Accurate Printer Monitor

3-

:

- - ; ,
- - ;
- - ;
- - ;
- - ;
- - ;
- - ;
- - ;
- - ;

/

"

"

Accurate Printer Monitor

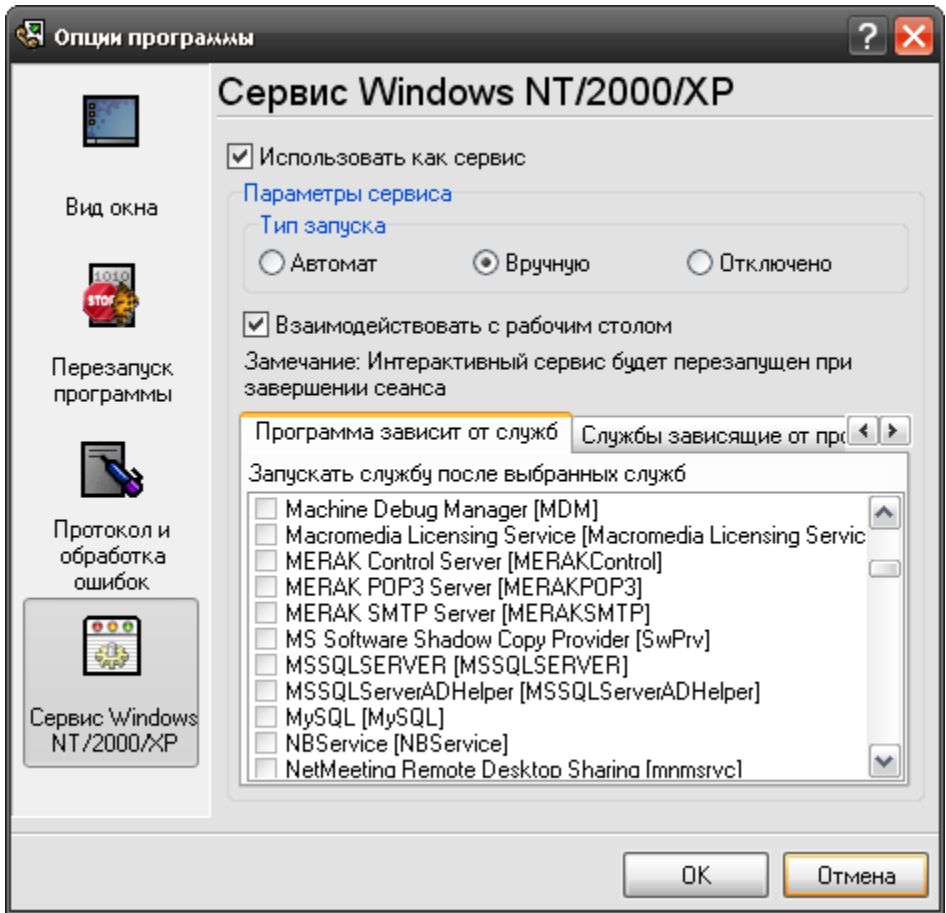
## 4.8 Windows NT/2000/XP/Vista

### 4.8.1

Windows NT/2000/XP :

- Windows NT 4.0;
- 2000 );
- Windows 2000 (
- );
- );

Windows NT/2000/XP" (.1).



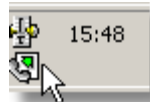
.1

- 1.
- 2.
- 3.

Windows

"

" ( .2).  
" , . . Windows



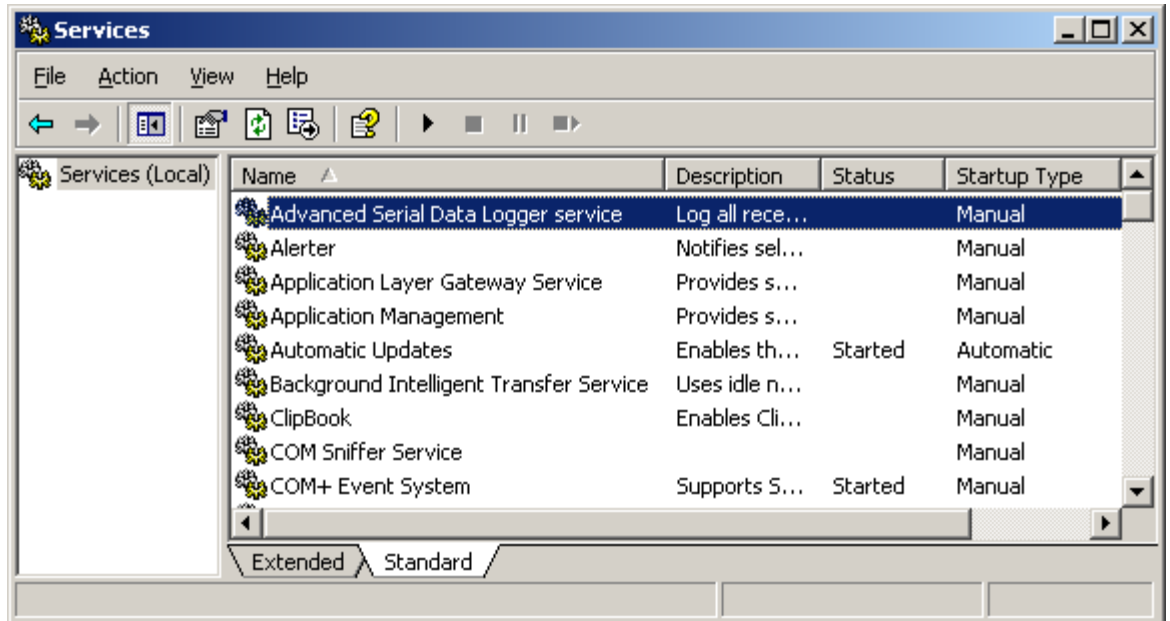
.2

COM-

Accurate Printer Monitor

" ( .1).

( .3).

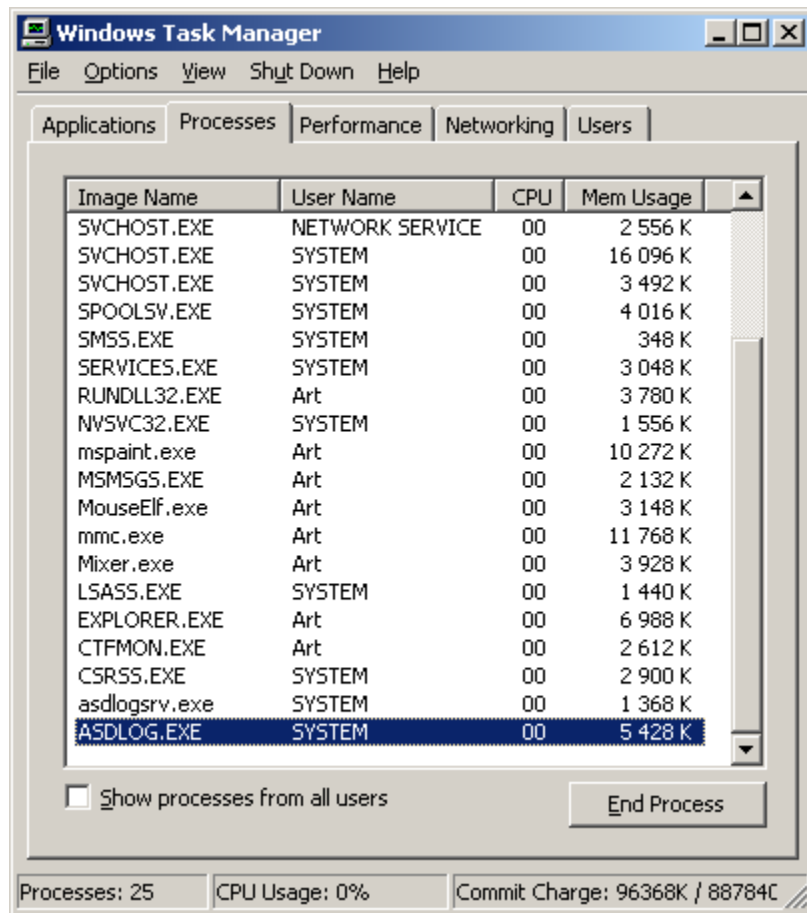


.3

( Windows 2000)

printermon.exe ( .4).

2 - printermonsrv.exe  
 Accurate Printer Monitor  
 Accurate Printer Monitor,  
 svany.exe



.4

printermonsrv.exe :

- /? - ;
- /l - ;
- /A - ;
- /D - ;
- /R - ;

### 4.8.2

### Windows Vista

Windows Vista



4.10

Windows.

5

?

5.1

SoftIce

[support@aggsoft.ru](mailto:support@aggsoft.ru)