

## Advanced PBX Data Logger

<b>1</b>		<b>1</b>
1	O Advanced PBX Data Logger .....	1
2	.....	2
<b>2</b>	,	<b>4</b>
1	.....	4
2	.....	5
3	.....	5
4	.....	6
<b>3</b>		<b>6</b>
1	.....	6
2	.....	7
<b>4</b>		<b>7</b>
1	.....	7
2	.....	9
3	.....	12
4	.....	13
	(COM) .....	13
	TCP/IP .....	17
	.....	21
	.....	23
	.....	23
	.....	25
	.....	26
5	.....	27
6	.....	28
7	.....	28
8	Windows NT/2000/XP/Vista .....	30
	.....	30
	Windows Vista .....	33
9	.....	34
10	.....	35
<b>5</b>	?	<b>35</b>
1	.....	35



## 1

## 1.1 O Advanced PBX Data Logger

Private Branch eXchange ( PBX Private Business Exchange)  
 Automatic Branch eXchange). PABX (Private  
 SMDR, CDR, CIL. PBX  
 (PBX,

- (RS232) - COM
- TCP UDP ( ) - Advanced PBX Data Logger
- ( ) - Advanced PBX Data Logger

Advanced PBX Data Logger

RS232, RS845, TCP UDP,  
 Excel, DDE, OPC.

SMDR CIR

Advanced PBX Data Logger:

- 
- 50 (PBX)
- CDR SMDR,
- 
- 
- 
- 
- 
- MS Excel. MS Excel;
- (MS SQL, Oracle, MS Access, dBase MSSQL, MySQL, ODBC-  
 .);
- . Advanced PBX Data Logger
- DDE OPC ;
- ;

- ;
- ;
- Windows
- 9x/Me/NT/2000/XP/Vista, x32, x64.
- Windows. Advanced PBX Data Logger  
Windows NT/2000/XP/Vista,
- !  
Advanced PBX Data Logger,
- !  
Advanced PBX Data Logger,
- !  
Advanced PBX Data Logger,
- : <http://www.aggsoft.ru/>
- : <http://www.aggsoft.ru/pbx-data-logger.htm>

## 1.2

- **ASCII** - ASCII
- ( , README.TXT).  
Windows  
ASCII. ASCII \*.TXT
- **Binary File** - ASCII ( 0 255).
- **Bytes ( )** - ,
- **Bit ( )** - 8 ( ) :0 1. 8
- **Baud Rate** - BPS  
( ),  
, 2400 bps ( ,  
) , 600 .
- **Cable ( )** - ,
- **CDR (Call detail record)** - .

**COM port -**

4 , IBM IBM-  
COM1, COM2, COM3 COM4.

**Data bits -** ( ) ,

**DNS (Domain Name System) - DNS**  
( TCP/IP) DNS  
( IP )  
www.aggsoft.com 198.63.211.24.

**Flow control -**

" "

( ; )

**Handshaking -**

**Internet ( ) -** , TCP/IP

**IP, Internet Protocol ( ) - Internet Protocol,**  
TCP/IP, IP IP ,  
'xx.xx.xx.xx'.

**IP ( Internet Protocol) -** , TCP/IP.  
IP , , IP . IP  
: 198.63.211.24.

**LAN (Local Area Network) -**

**NIC, Network Interface Card ( ) -** ,  
(PCI,  
turbochannel, nuBus, .) ( , 10baseFL).

**PC ( ) -** Personal Computer ( ).

**Ports ( ) -**

**Protocol ( ) -**

**RS232, RS423, RS422 RS485** - Electronics Industry Association (EIA)  
 RS232, RS423, RS422, RS485,  
 EIA "RS"  
 (recommended standard).  
 "EIA".

**Stop bits ( )** -  
 1 2.

**SMDR** (Station Messaging Detail Record) - Call detail record CDR.

**TCP/IP, Transport Control Protocol / Internet Protocol** - TCP IP

TCP/IP  
 Internet.

## 2

### 2.1

Copyright © 1999-2008 AGG Software.  
 All Rights Reserved

1. Advanced PBX Data Logger
- 2.
3. Advanced PBX Data Logger
- 4.
5. Advanced PBX Data Logger  
[sales@aggsoft.ru](mailto:sales@aggsoft.ru)
6. Advanced PBX Data Logger  
 Advanced PBX Data Logger

7. Advanced PBX Data Logger

"AS IS".

8.

9.

Advanced PBX Data Logger

10.

Advanced PBX Data Logger  
Advanced PBX Data Logger.

2.2

shareware-

5

- 
- 
- 

21

100

2.3

shareware-

4

Internet,

## 2.4

Advanced PBX Data Logger	<a href="mailto:support@aggsoft.ru">support@aggsoft.ru</a>
	<a href="mailto:support@aggsoft.ru">support@aggsoft.ru</a>
	<a href="mailto:sales@aggsoft.ru">sales@aggsoft.ru</a>

## 3

### 3.1

- Windows 95 ( ); comctrl.dll,
- Windows 95 OSR2;
- Windows 98;
- Windows Me.

- Windows NT4 (SP4 ).
- Windows 2000 Professional;
- Windows 2000 Server;
- Windows XP x86 x64;
- Windows 2003 Server x86 x64;
- Windows Vista ( ) x86 x64.

Internet Explorer 5.0

### 3.2

Advanced PBX Data Logger.

, Advanced PBX Data Logger "/Programs Files/  
Advanced PBX Data Logger"

Advanced PBX Data Logger

## 4

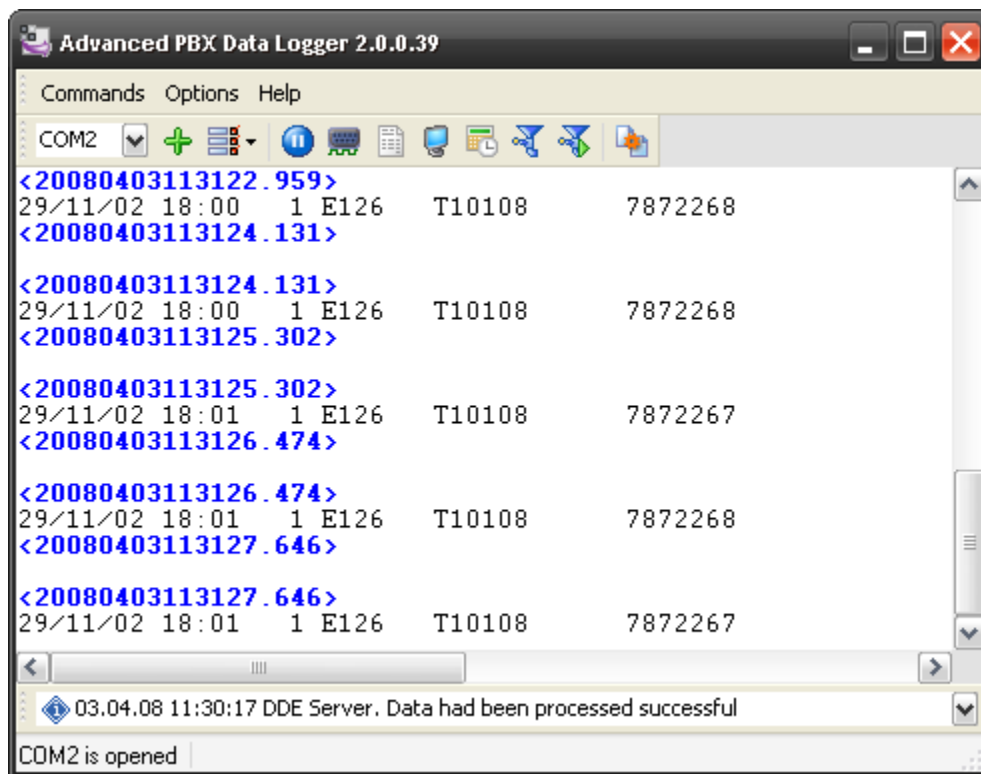
### 4.1

Advanced PBX Data Logger

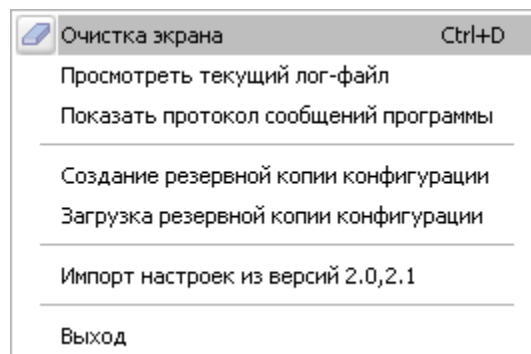
Advanced PBX Data Logger " "

( ) ( .1),

" / ..."), " ( .2)



.1



.2

C:\.

1-2-3-4-5

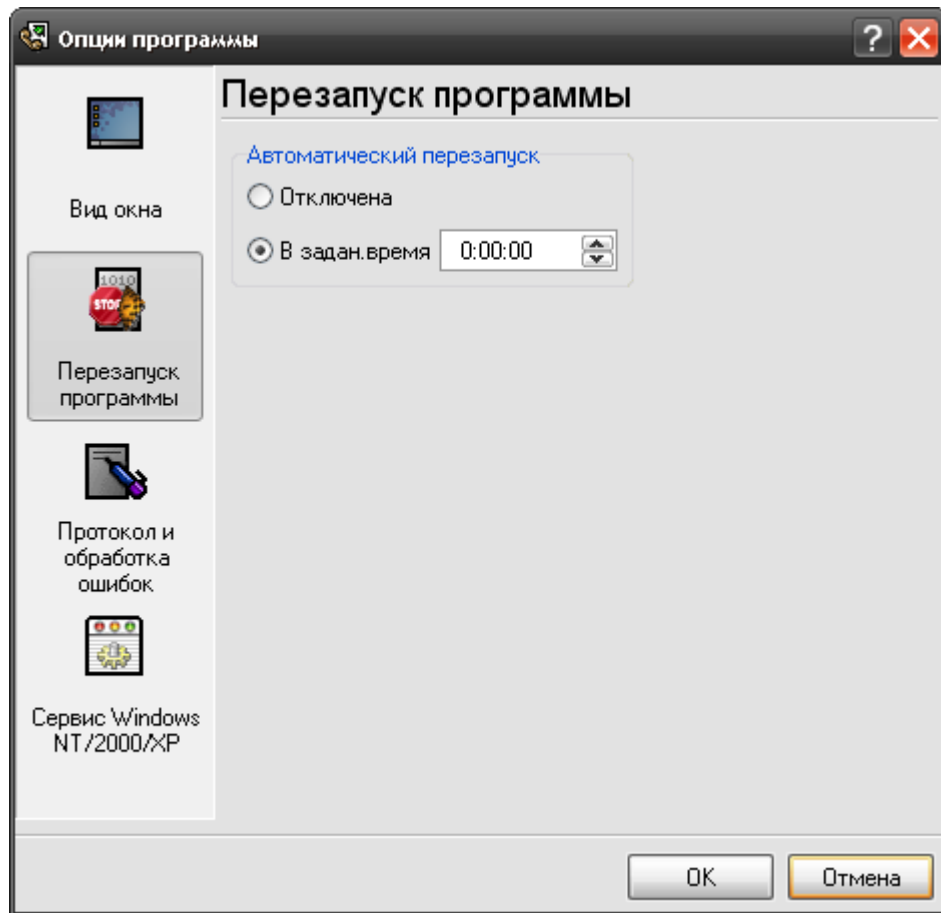
1.



(NIC), Advanced PBX Data Logger will IP  
 Logger IP , Advanced PBX Data  
 • IP Advanced PBX Data Logger ;  
 IP DHCP, IP  
 " [TCP/IP](#) <sup>[17]</sup>

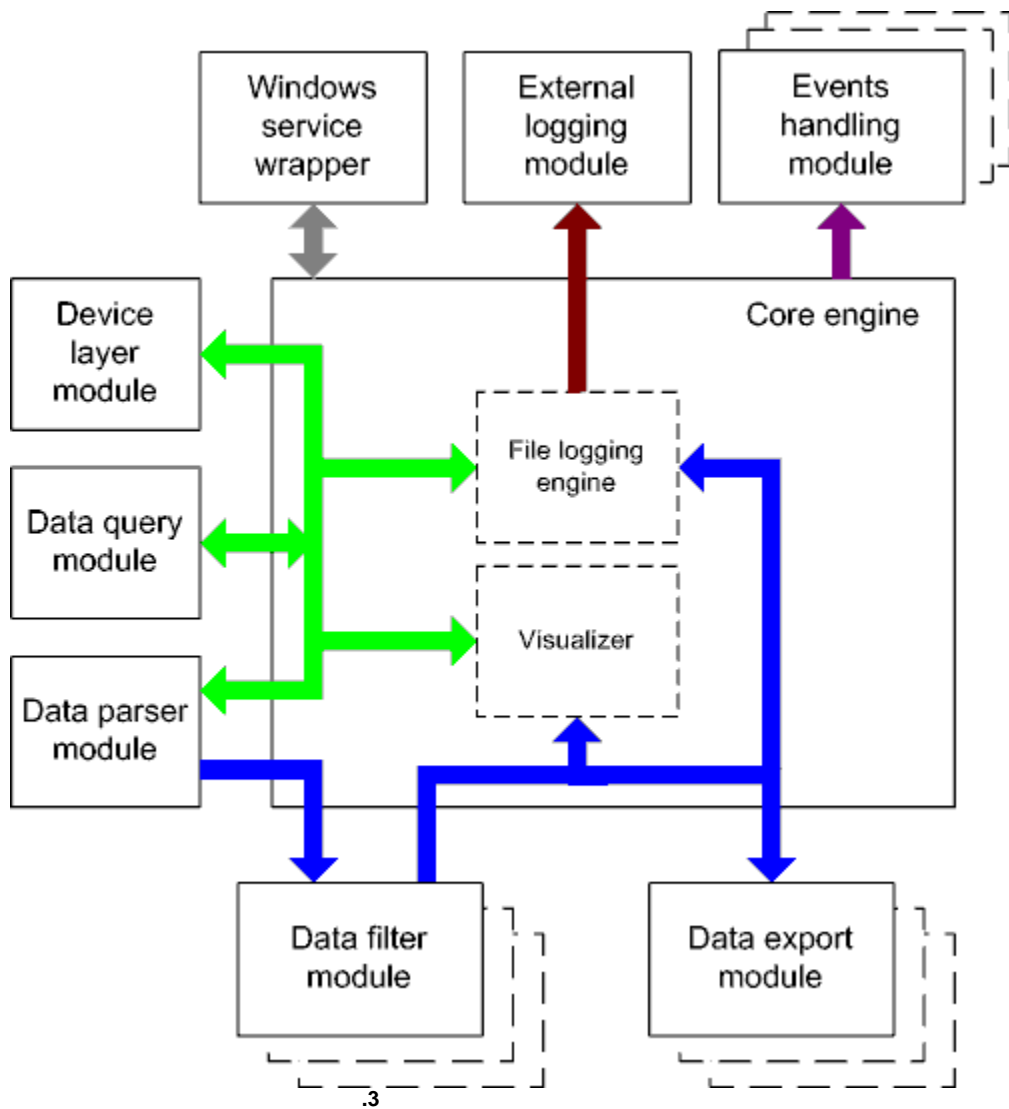
- - ,  
 - [\[23\]](#)  
 - [\[25\]](#)  
 ( [.1](#) <sup>[7]</sup> ).  
 " [\[21\]](#) ",  
 Advanced PBX Data Logger [\[27\]](#).

Advanced  
 PBX Data Logger. Advanced PBX Data Logger  
 (plug-ins),  
 " "  
[\[28\]](#) ( [.1](#) <sup>[7]</sup> ) , [\[27\]](#)



.3

4.3



- - ( ).
- - ( ).

• Core engine -

- Device layer module -
- Data query module -
- Data parser module -
- Data filter module -
- Data export module -
- Visualizer -
- File logging engine -
- Windows service wrapper -
- External logging module -
- Events handling module -

## 4.4

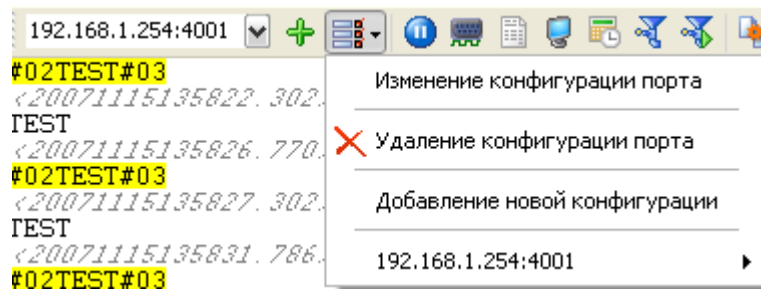
### 4.4.1

#### (COM)

(.1) (7)

(.1).

" (.1).



.4

COM-

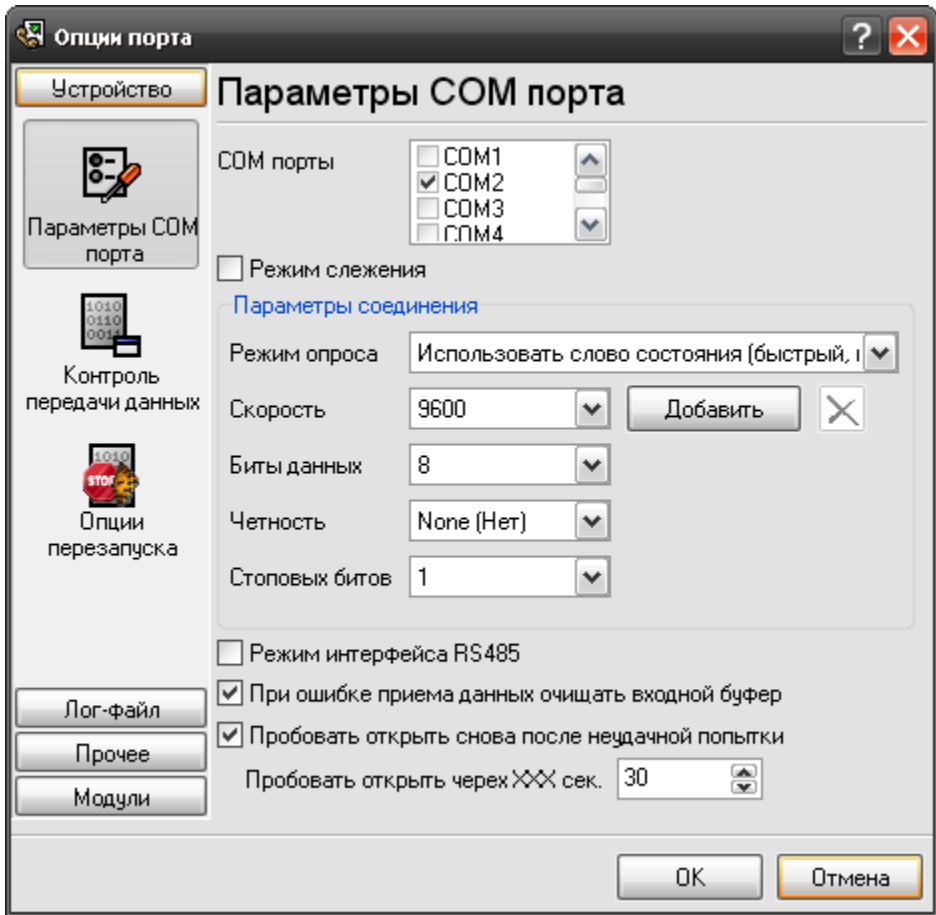
( )

COM-

COM-

(

.1).



.5 COM-

RS-485

RTS-

API-

Windows

: API-

Windows.

API,

Windows

API

API -

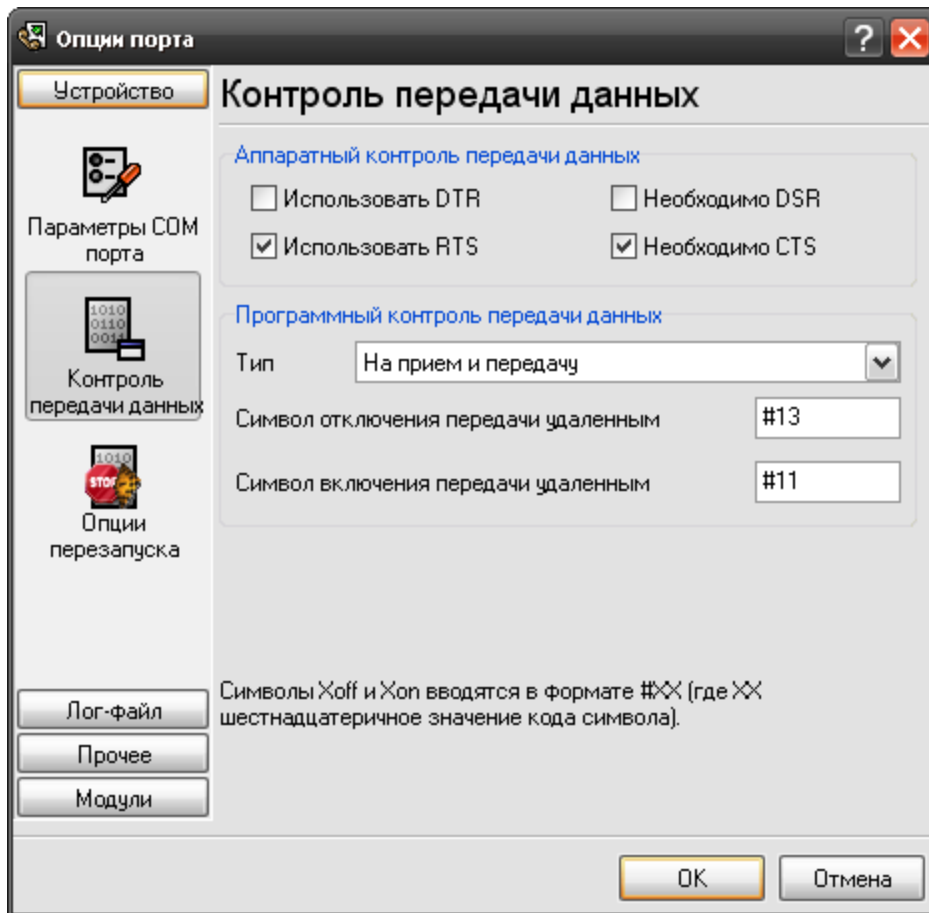
. Advanced PBX

Data Logger

(WRPI.DRV



10% Xon.  
" ". 10% 90%  
Xoff. Xon  
0x11 COM-  
0x13 -



.6

Advanced PBX Data Logger

COM-

COM-

Advanced PBX Data Logger,  
COM-

Advanced PBX Data Logger.

UART (UART receiver parity error) -

UART (UART receiver overrun),  
UART (UART receiver framing error) -

CTS (transmit timeout waiting for CTS),  
DSR (transmit timeout waiting for DSR),  
RLSD (transmit timeout waiting for RLSD) -

(transmit queue is full) - Advanced PBX Data Logger

break (break condition received)

#### 4.4.2

#### TCP/IP

##### UDP TCP

UDP (User Datagram Protocol). TCP

TCP (Transport Control Protocol)

IP. TCP

TCP

UDP TCP

UDP

UDP  
TCP, UDP

IP

TCP, UDP

Instant Messaging,

UDP

IP.

Advanced PBX Data Logger

TCP/IP

( TCP/IP) Advanced PBX Data Logger

1.

TCP/IP  
Advanced PBX Data Logger  
( www.yourserver.com)

"Plant1",  
IP  
Advanced PBX Data

Logger

2.

IP  
Advanced PBX Data Logger  
(NIC),  
IP  
Advanced PBX Data

Logger

IP Microsoft Windows, TCP/  
IP

IP

IP

"OK"

TCP/IP.

Advanced PBX Data Logger

Advanced PBX Data Logger

IP

Advanced PBX Data Logger

(.17)

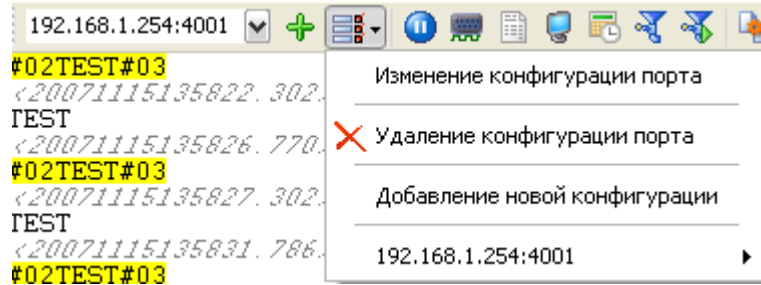
(.17)

(.5).

IP"

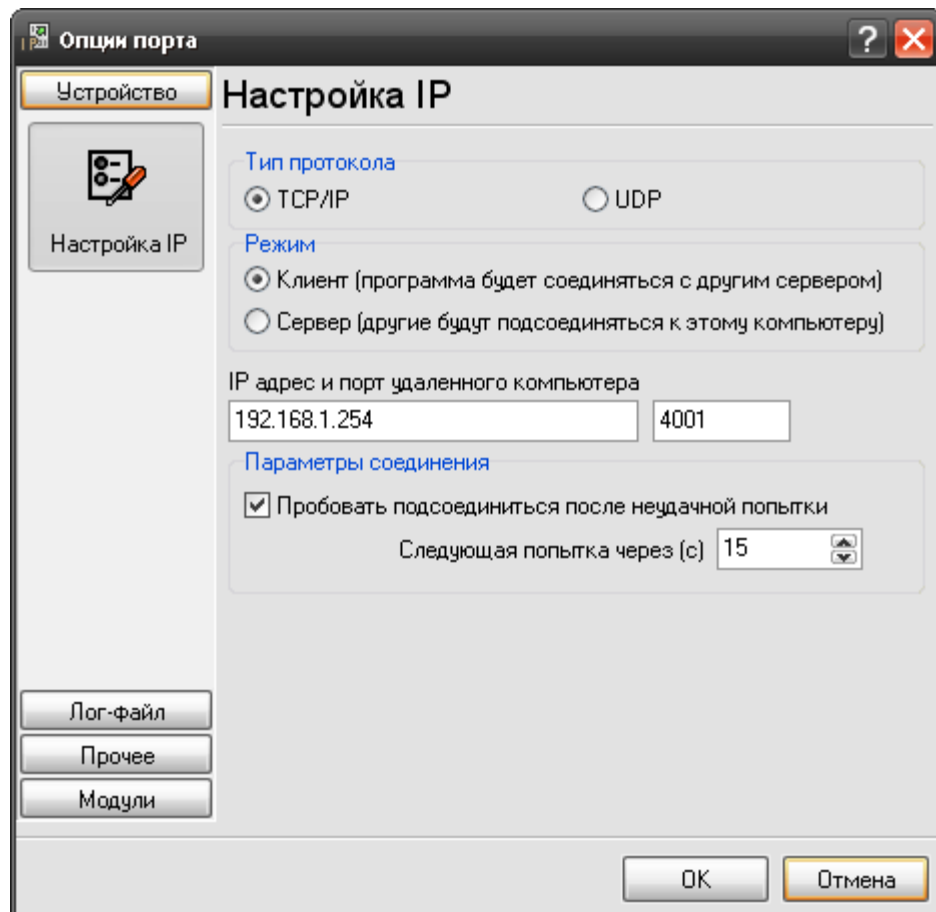
TCP/IP

" ( .4).



.4

TCP/IP: IP"



.5

TCP/IP.



Windows Firewall

(Security Alert).



.6

- 
- 
- 

Windows XP SP2

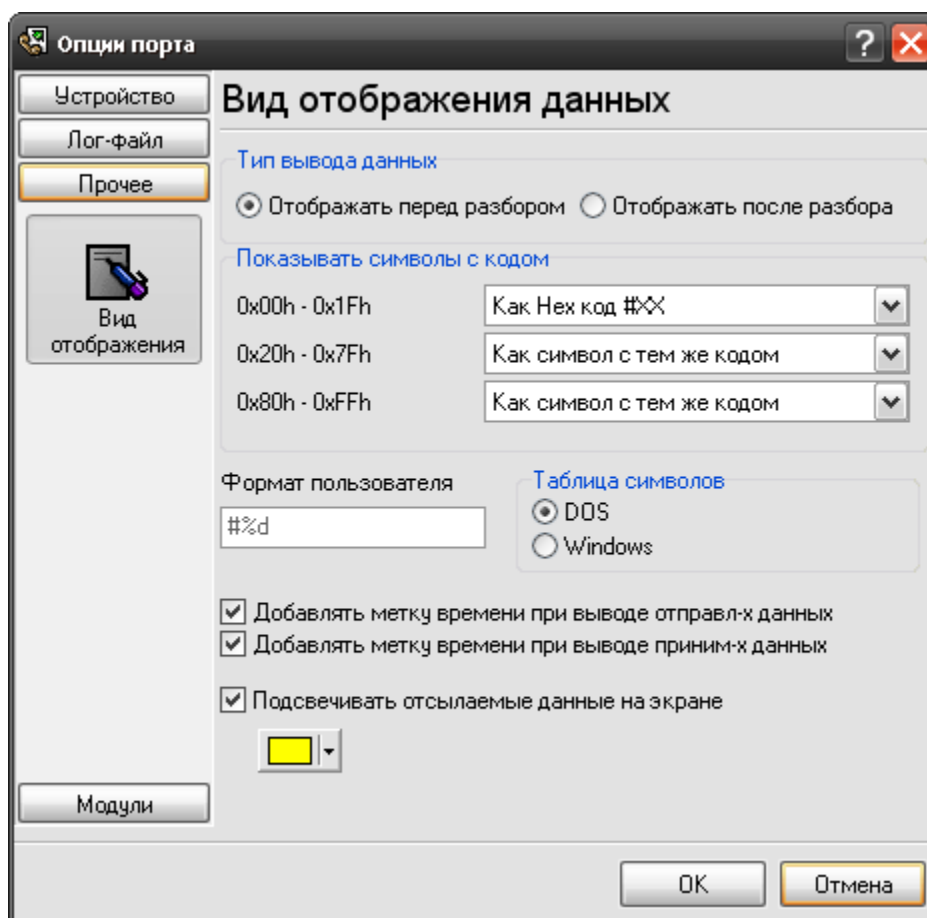
4.4.3

(.17)

2

(.7):

- 1.
- 2.



.7.

1.

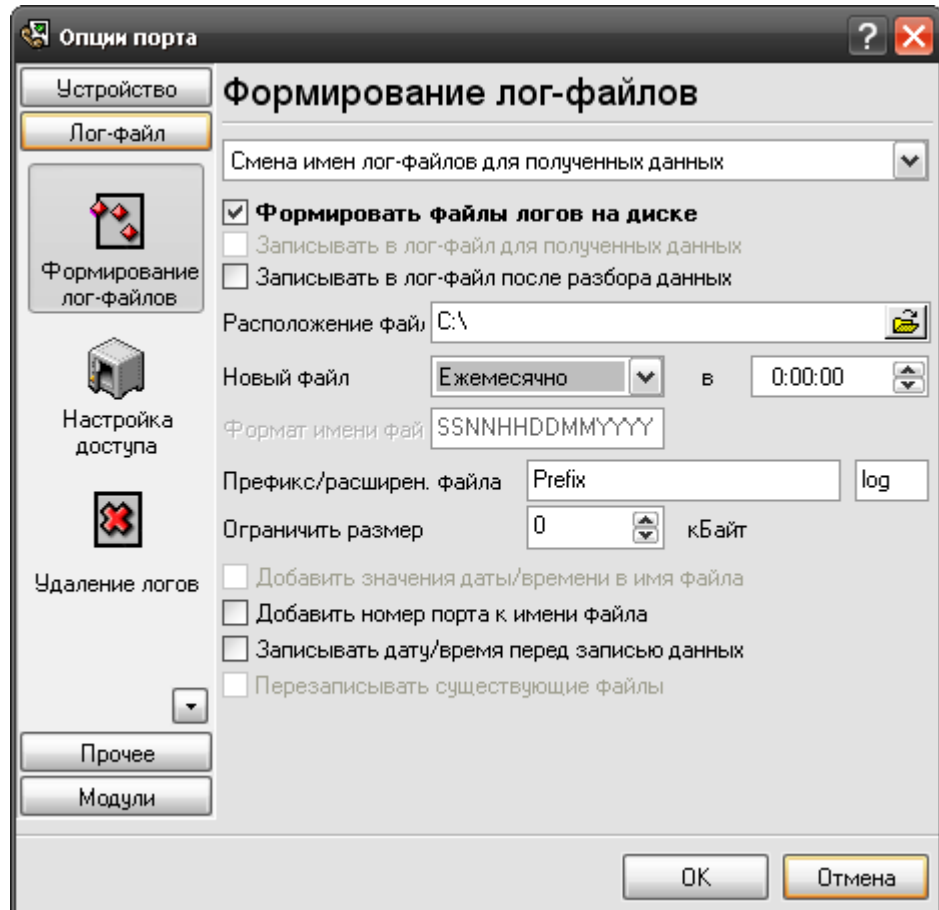
2.

3.

4.

## 4.4.4

## 4.4.4.1



.8.

"OK".

Advanced PBX Data Logger

"log ",

"sample",

"sampleYYYYMMDD.log". 21-



```

yyyy - (0000 - 9999);
h - (0 - 23);
hh - (00 - 23);
n - (0 - 59);
nn - (00 - 59);
s - (0 - 59);
ss - (00-59).

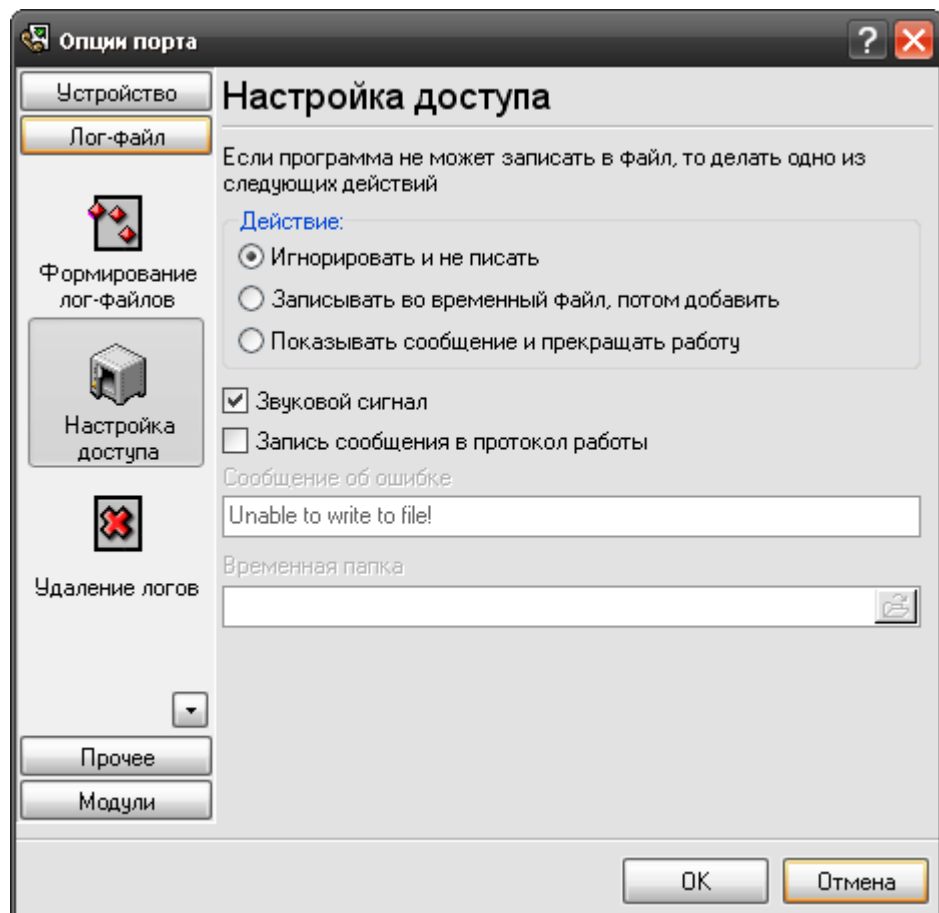
: "sample_log", "txt".

: = sample_log_, = txt ( !).
HHDDMMYYYY.

```

## 4.4.4.2

(.1).  
Microsoft Office ( , Microsoft Word), Advanced PBX Data Logger



.9.

Advanced PBX Data Logger

:

•

•

•

4.4.4.3



- ;  
- Windows 2000 Windows XP  
- , -
- -  
,  
.



## 4.6

" " ' .  
" " ' .  
Windows NT  
" -> " \_\_\_\_\_ 13  
, ,

## 4.7

( ).  
, " ' .  
( .1).  
+  
.log.



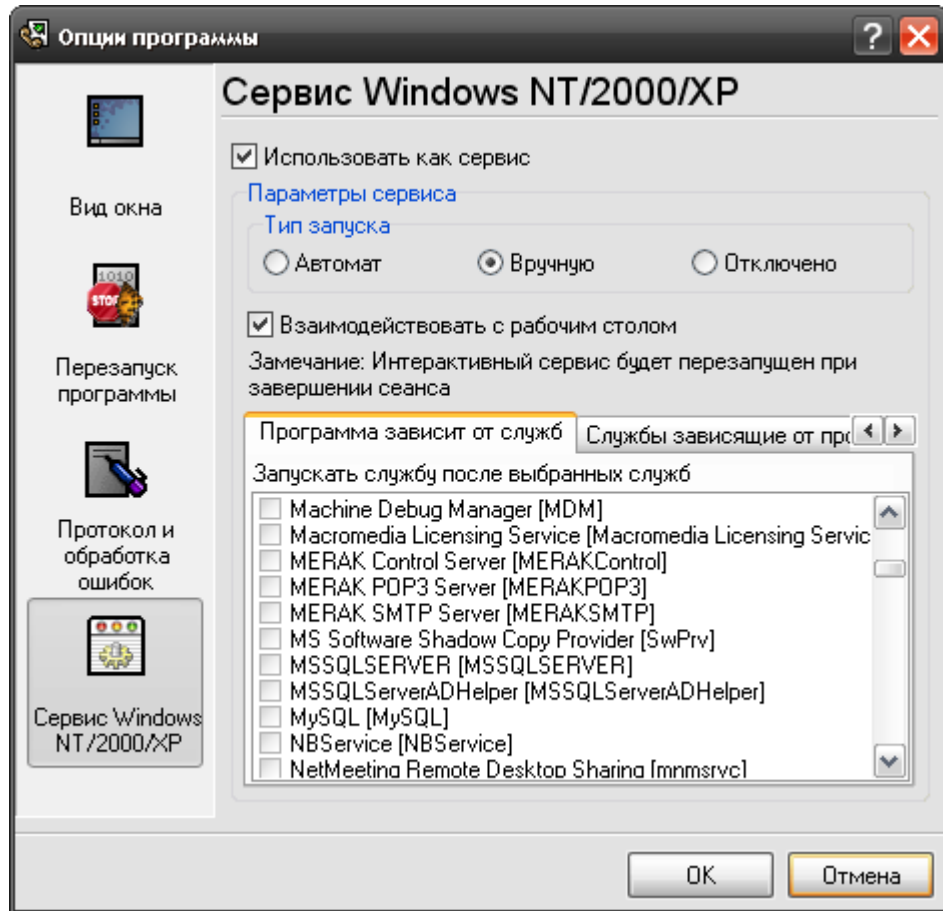
## 4.8 Windows NT/2000/XP/Vista

### 4.8.1

Windows NT/2000/XP :

- Windows NT 4.0;
- ( Windows
- 2000 );
- Windows 2000 (
- );
- - (

Windows NT/2000/XP" ( .1).



.1

- 1.
- 2.
- 3.

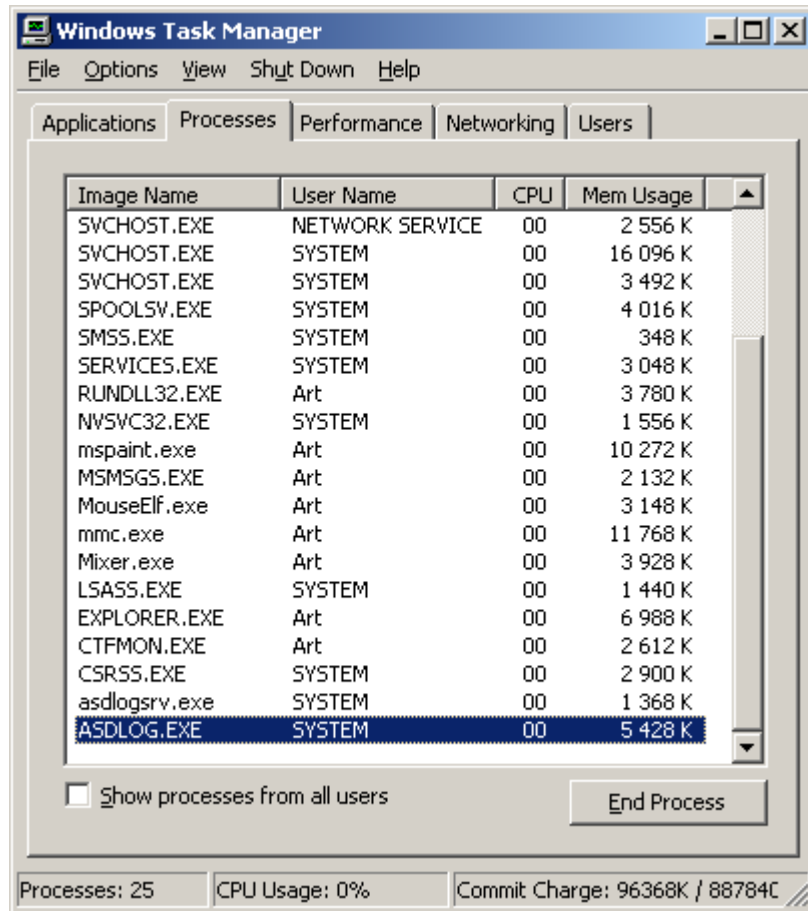
Windows



.2

COM-  
Advanced PBX Data Logger  
" ( .1).  
" " " ( .3).





.4

pbxloggersrv.exe

- /? - ;
- /I - ;
- /A - ;
- /D - ;
- /R -

## 4.8.2

### Windows Vista

Windows Vista



## 4.10

Windows. / COM-

5

?

5.1

Softlce -

[support@aggsoft.ru](mailto:support@aggsoft.ru)