

Advanced OPC Data Logger

<b>1</b>		<b>1</b>
1	Advanced OPC Data Logger .....	1
2	.....	2
<b>2</b>	,	<b>4</b>
1	.....	4
2	.....	5
3	.....	5
4	.....	6
<b>3</b>		<b>6</b>
1	.....	6
2	.....	6
<b>4</b>		<b>7</b>
1	.....	7
2	.....	8
3	.....	10
4	.....	11
	OPC .....	11
	.....	20
	.....	22
	.....	22
	.....	24
	.....	25
	CSV - .....	25
	.....	26
	.....	26
5	.....	28
6	.....	29
7	.....	29
8	Windows NT/2000/XP/Vista .....	31
	.....	31
	Windows Vista .....	34
9	.....	35
10	.....	36
<b>5</b>	?	<b>36</b>
1	.....	36





- ; ,
  - ;
  - ;
  - Windows
  - 9x/Me/NT/2000/XP/Vista, x32, x64.
  - Windows. Advanced OPC Data Logger  
Windows NT/2000/XP/Vista,
  - !  
Advanced OPC Data Logger,  
!
- : <http://www.aggsoft.ru/>  
: <http://www.aggsoft.ru/opc-data-logger.htm>

## 1.2

- ASCII** - ASCII
- , Windows  
ASCII. ASCII \*.TXT  
( , README.TXT).
- Binary File** - ASCII ( 0 255).
- Bytes** ( ) - ,
- Bit** ( ) - 8 ( ) :0 1. 8
- Cable** ( ) - ,
- Client/Server** ( / ) - ( , )  
( . ) ( , )
- DA (data access)** - .
- DNS (Domain Name System)** - DNS  
( TCP/IP) DNS  
( ) IP .  
www.aggsoft.com 198.63.211.24.

**Internet** ( ) - , TCP/IP

**IP, Internet Protocol** ( ) - Internet Protocol, TCP/IP, IP IP , 'xx.xx.xx.xx'.

**IP ( Internet Protocol)** - , TCP/IP. IP . IP : 198.63.211.24.

**LAN (Local Area Network)** -

**NIC, Network Interface Card** ( ) - , (PCI, turbochannel, nuBus, ) ( , 10baseFL).

**OPC (OLE for Process Control)** –

**OPC Alarms and Events** - OPC

**OPC Data Access** - OPC

**OPC DA** - . OPC Data Access.

**OPC Historical Data Access** - OPC

**OPC HDA** - . OPC Historical Data Access.

**PC** ( ) - Personal Computer ( ).

**Ports** ( ) -

**Protocol** ( ) -



10.

Advanced OPC Data Logger  
Advanced OPC Data Logger.

## 2.2

shareware-

 5

- 
- 
- 

21

100

## 2.3

shareware-

 4

Internet,

## 2.4

Advanced OPC Data Logger	<a href="mailto:support@aggsoft.ru">support@aggsoft.ru</a>
	<a href="mailto:support@aggsoft.ru">support@aggsoft.ru</a>
	<a href="mailto:sales@aggsoft.ru">sales@aggsoft.ru</a>

## 3

### 3.1

- Windows 95 ( comctrl.dll, );
- Windows 95 OSR2;
- Windows 98;
- Windows Me.

- Windows NT4 (SP4 ).
- Windows 2000 Professional;
- Windows 2000 Server;
- Windows XP x86 x64;
- Windows 2003 Server x86 x64;
- Windows Vista ( ) x86 x64.

Internet Explorer 5.0

### 3.2

Advanced OPC Data Logger.

, Advanced OPC Data Logger  
Advanced OPC Data Logger"

"/Programs Files/

## Advanced OPC Data Logger

## 4

## 4.1

## Advanced OPC Data Logger

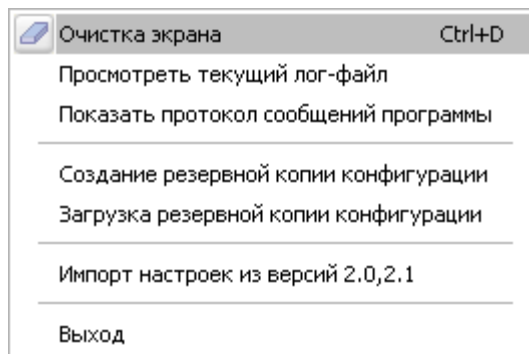
## Advanced OPC Data Logger

" "

( ) ( .1),

" / ..."), " ( .2)

.1



.2. " "

C:\. , "

## 1-2-3-4-5

1. , :

" " 26

2.

" "

3. Configure log file.

Select the "Log file" header in the port options dialog window and enable logging for a necessary data direction.

4.

"

5.

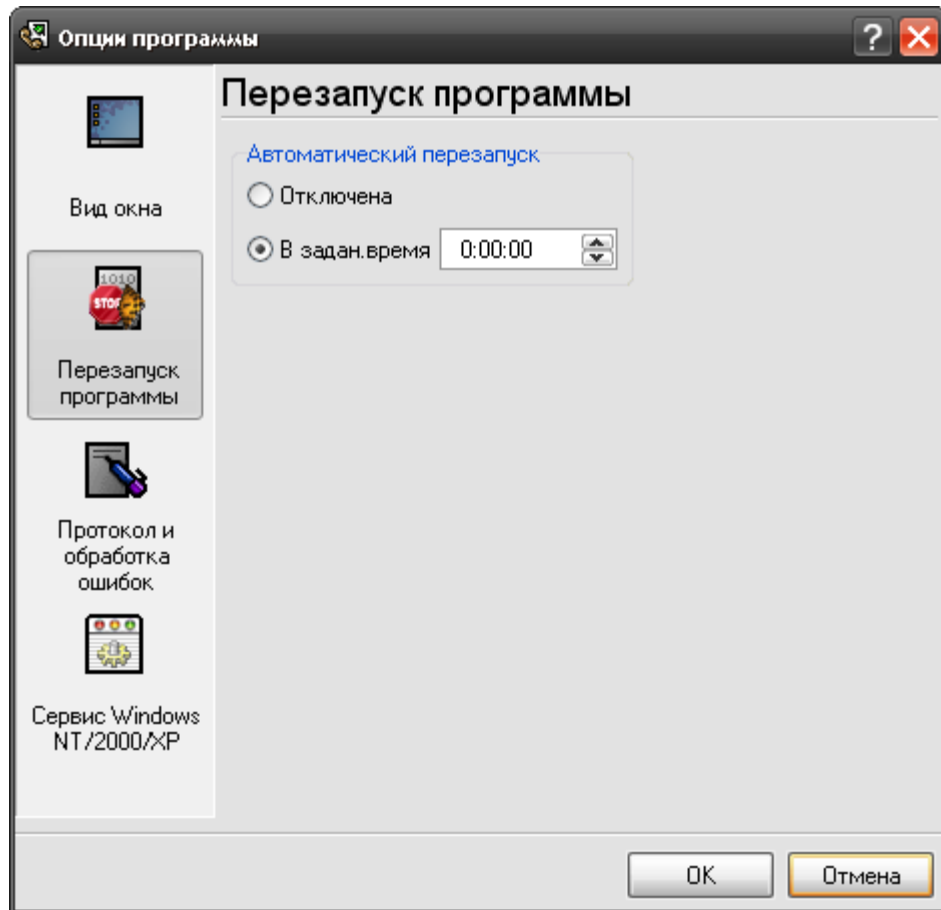
Advanced OPC Data Logger

Advanced OPC Data Logger

## 4.2

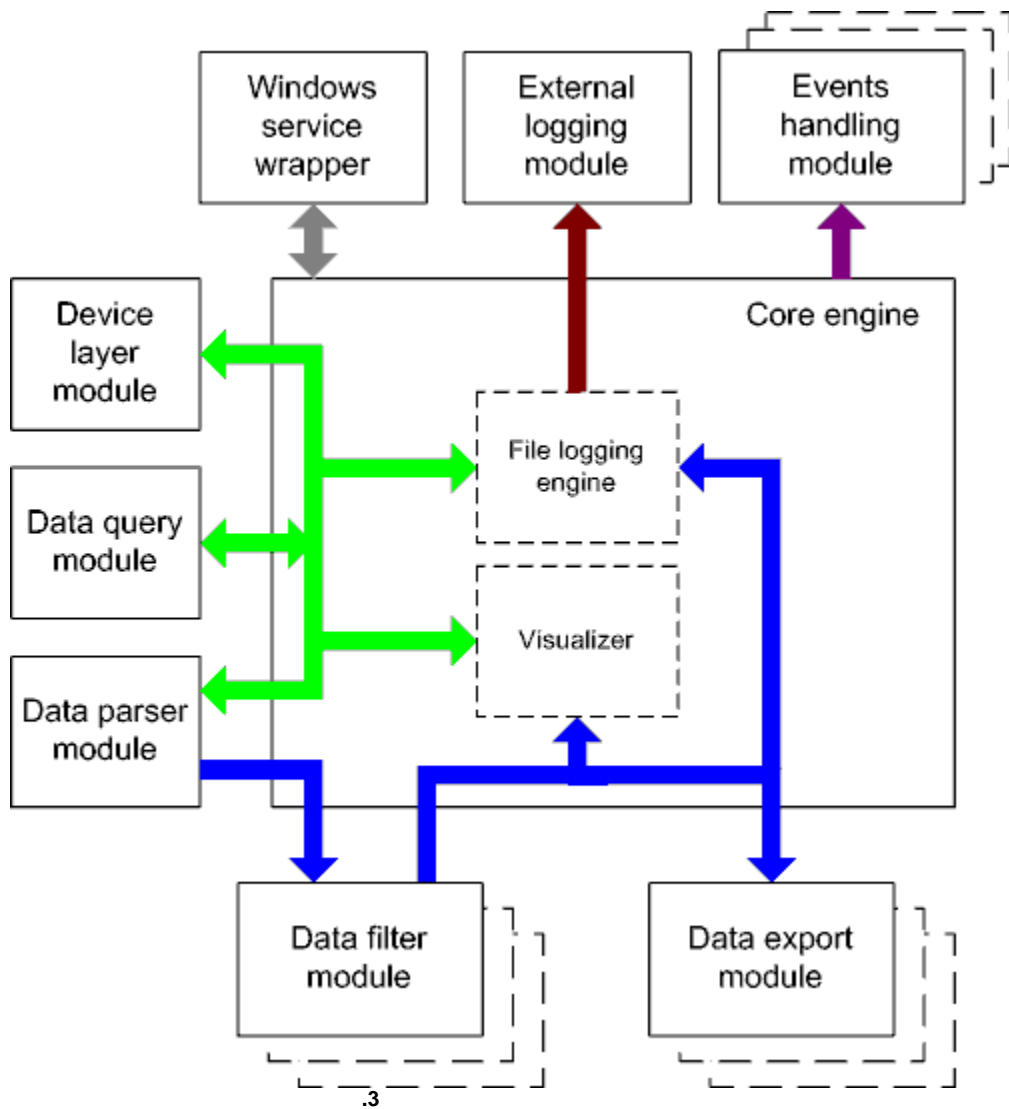
OPC Data Logger. Advanced OPC Data Logger  
[26] (plug-ins),

" [26]".



.3

4.3



- - ( ).
- - ( ).

• Core engine -



"," "" "[" "]"

"\"," ""

"\\"," \\",

"\_".

\$00.\$1F,

"\x".

OPC

:

1.

;

2.

.

"CR" "CR+LF";

3.

",";

4.

(

),

,

(

),

.

:

"integer",  
"double".

5.

"OPC

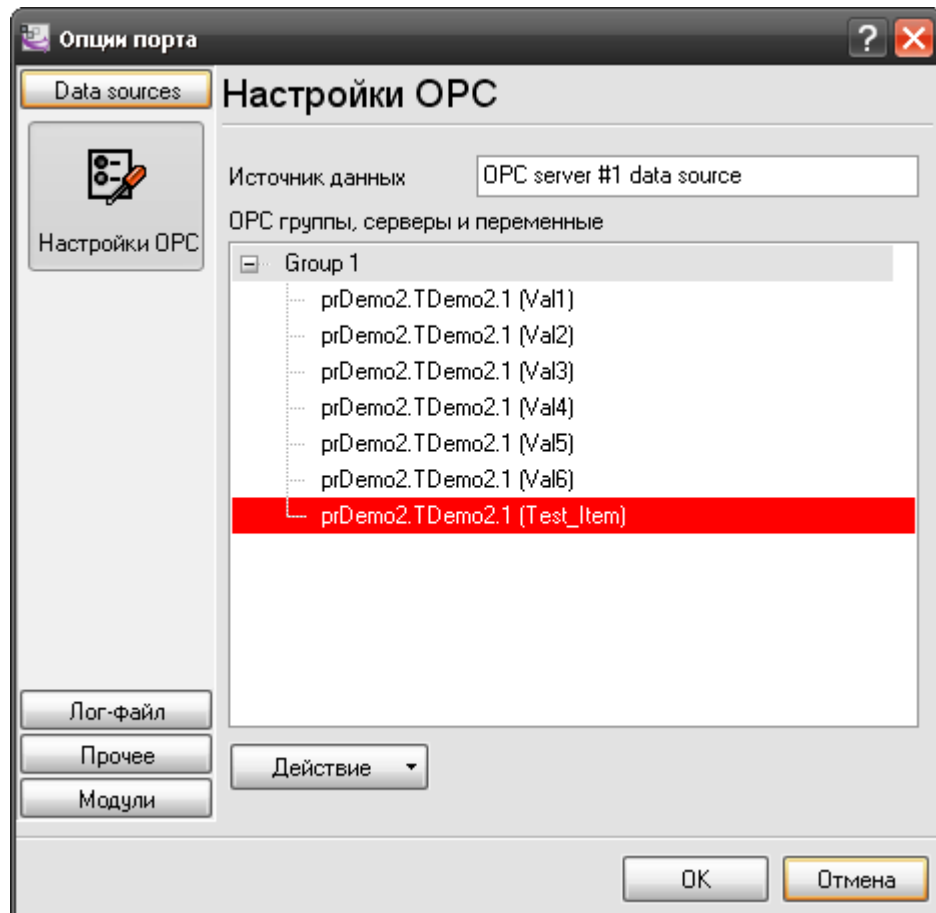
,

".

/

OPC" -

OPC.

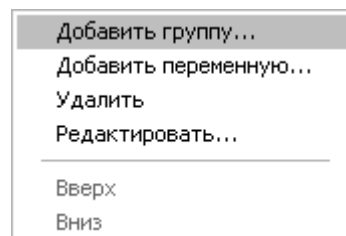


.1. OPC.

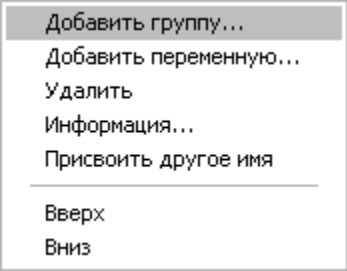
OPC

OPC

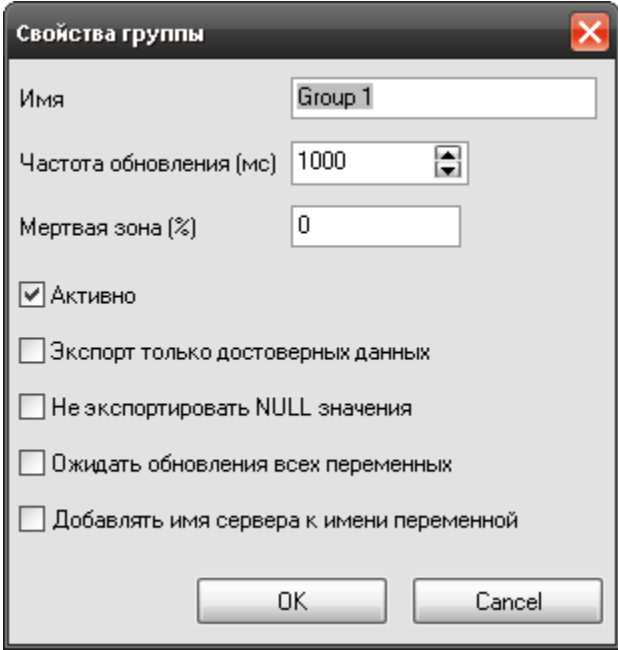
OPC



.2.

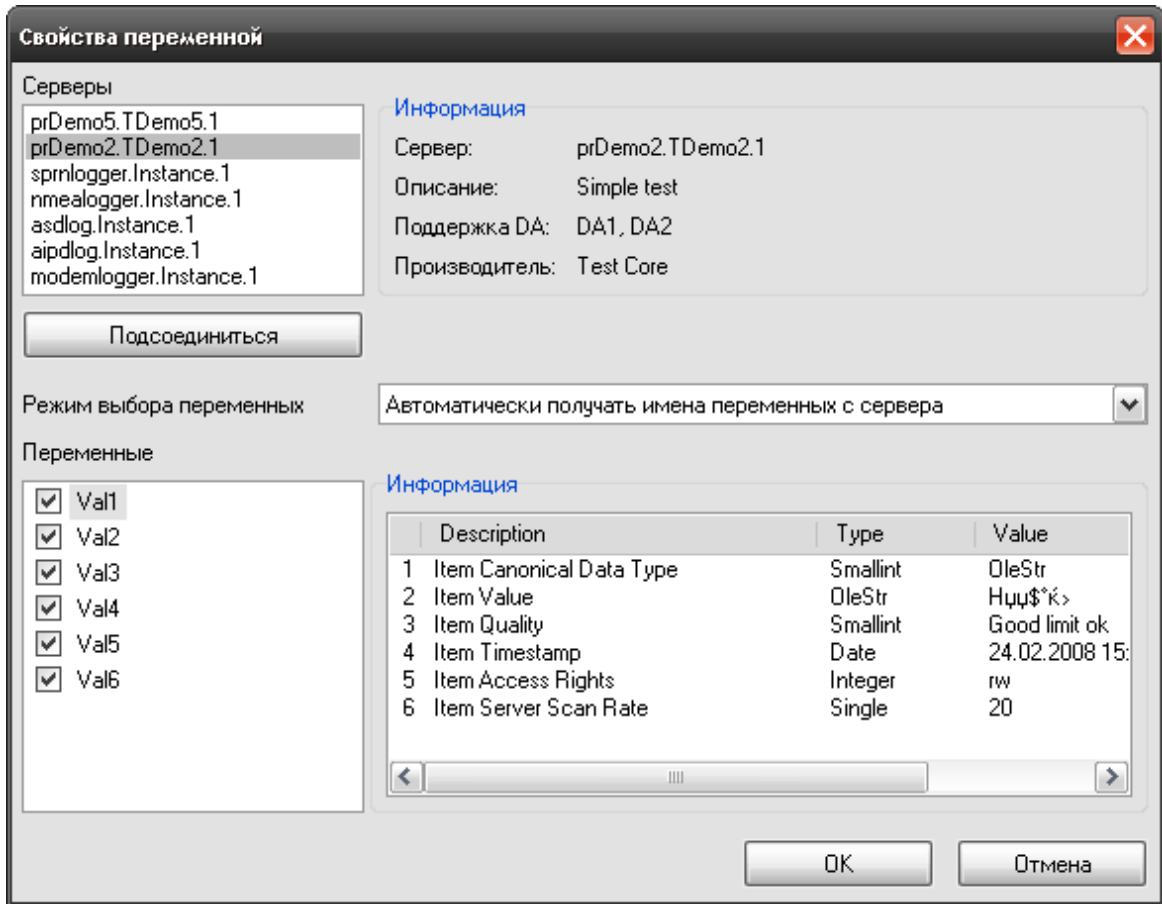


. 3.  
 :  
 " " " "OPC  
 " - " ( . 2 . 3).  
 " ...",  
 ( . 4).

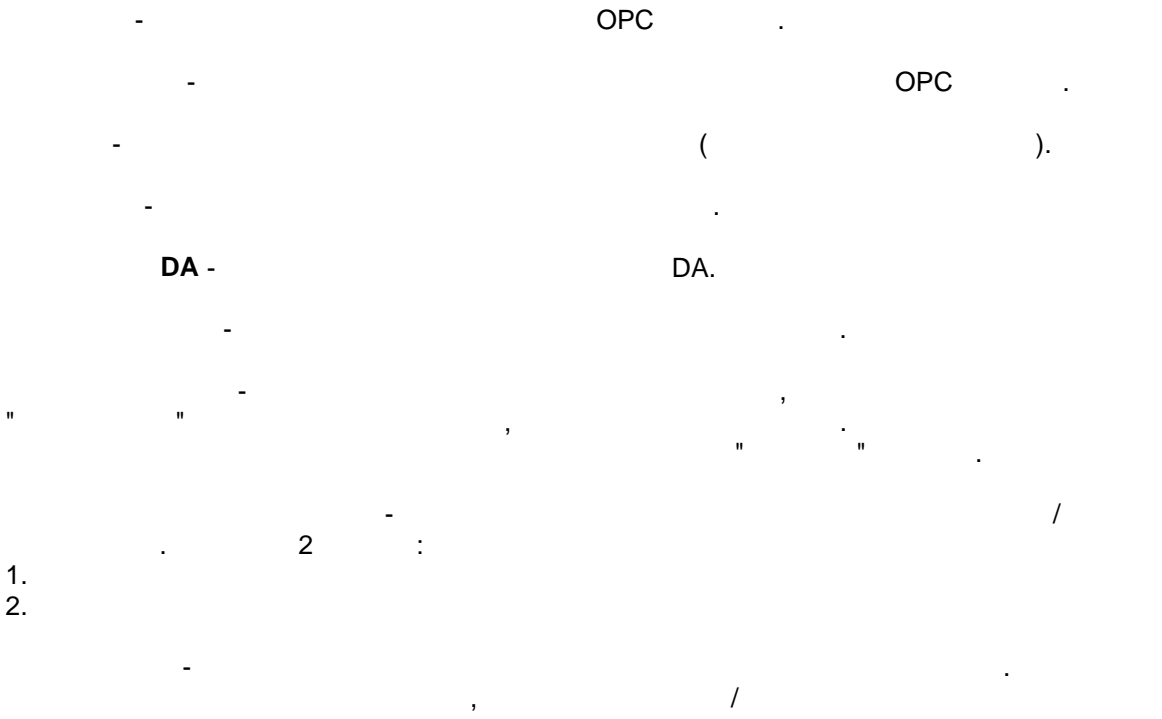


. 4.  
 Group XXX, XXX -  
 ( ) -  
 OPC  
 - 1000 , . . 1  
 (%) - - 0  
 ( ( , ) , )  
 ( )





.5.



( .1)

"OK"

( .6),

Выбрать все  
Очистить все  
Инvertировать выбор

.6.

( .6) -

( .6) -

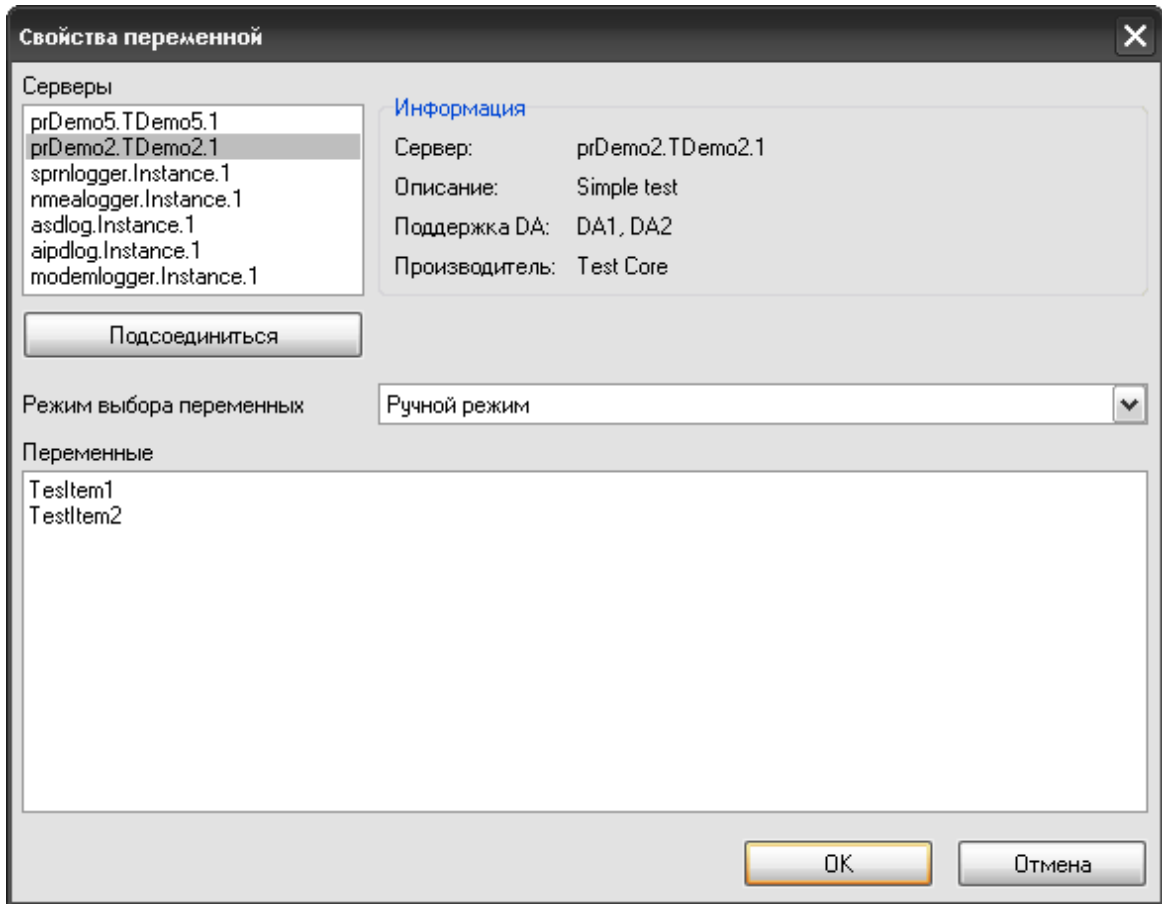
( .6) -

ID ( ) -

Description ( ) -

Type ( ) -

Value ( ) -



Variables ( ) -

:"

" " " "OPC

" - " ( .2 .3).

" " " " "

:"

" " " "OPC

" - " ( .2 .3).

" ..."

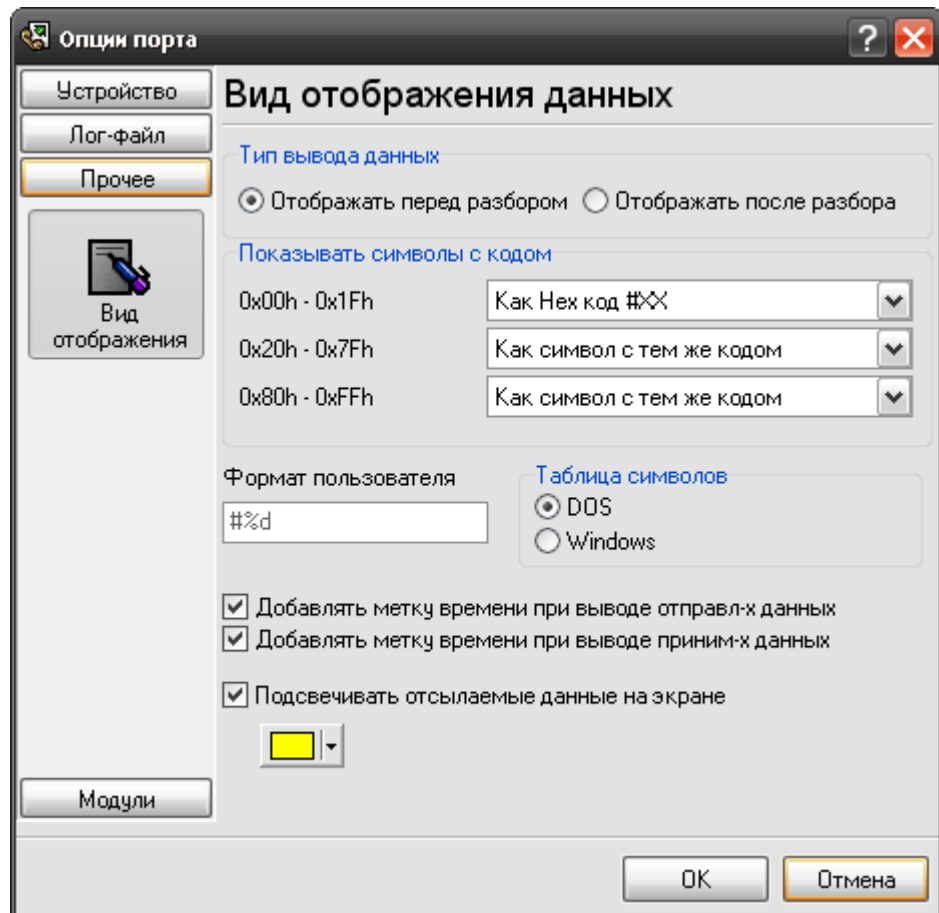
( .4).

:"

" "







.7.

" / "

, :

1.

- ,

. ,

Hex-

2.

. %d

, %x -

3.

- .

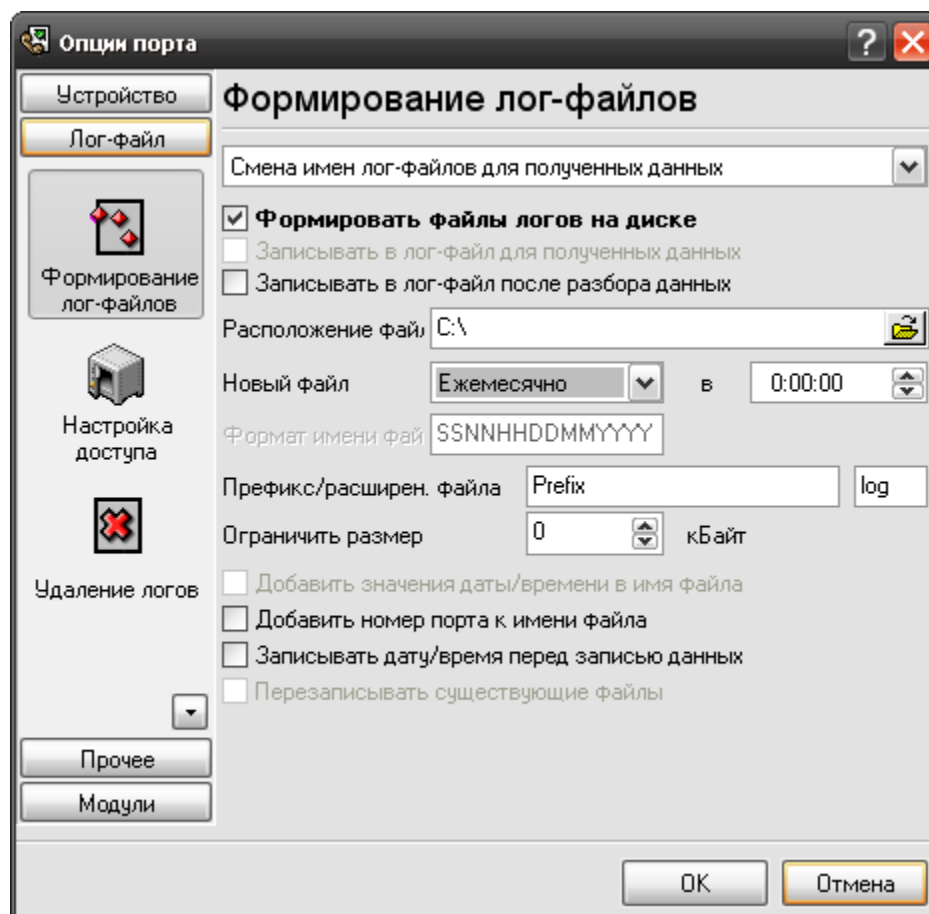
4.

. .

### 4.4.3

#### 4.4.3.1

COM



.8.

"OK".

Advanced OPC Data Logger

"log ",

"sample",

"sampleYYYYMMDD.log". 21-

2003 - "sample20030321.log".  
 ( ) ,

• " " - ; ,  
 • " " - ;  
 • ( ) , ;  
 • " " - , ;  
 !

• " " DDMMYYYY, DD -  
 , MM - YYYY -  
 ; " " MMYYYY.  
 • " " ( ,  
 DDMMYYYY).

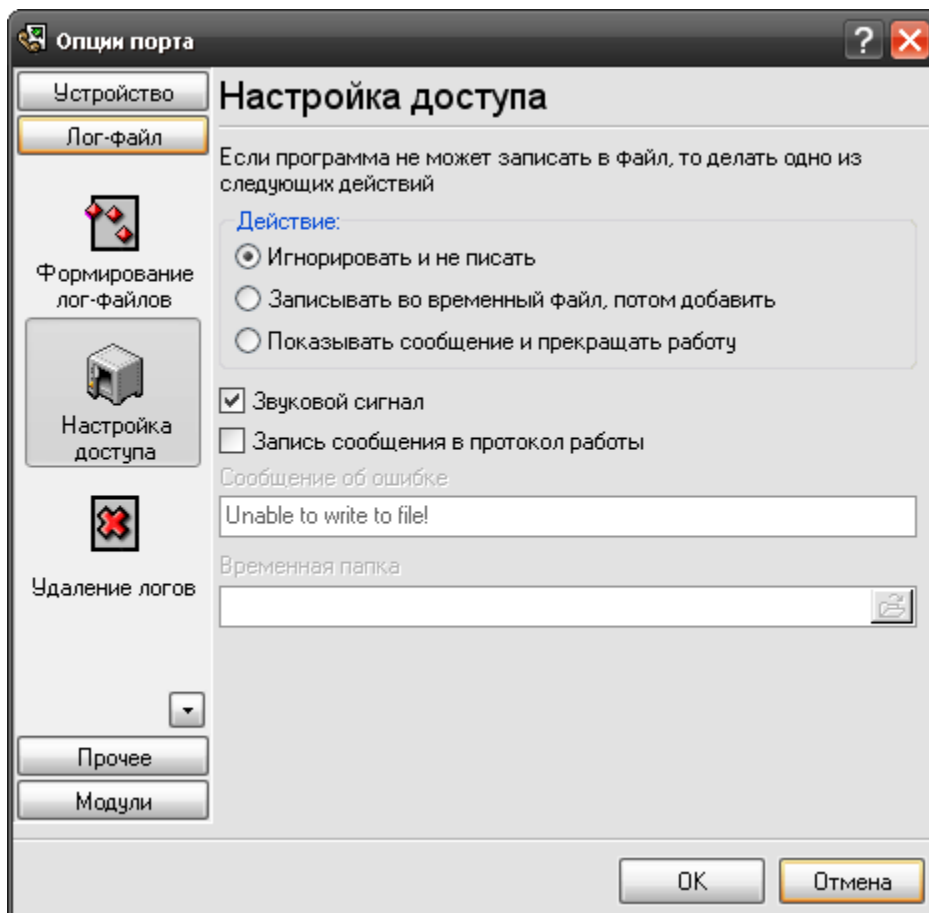
"/", "\", "\*", "?"

- d - (1 - 31);
- dd - (01 - 31);
- ddd - ( - )
- ddd - ( - )
- m - (1 - 12);
- mm - (01 - 12);
- mmm - ( - )
- mmmm - ( - )
- yy - (00 - 99);

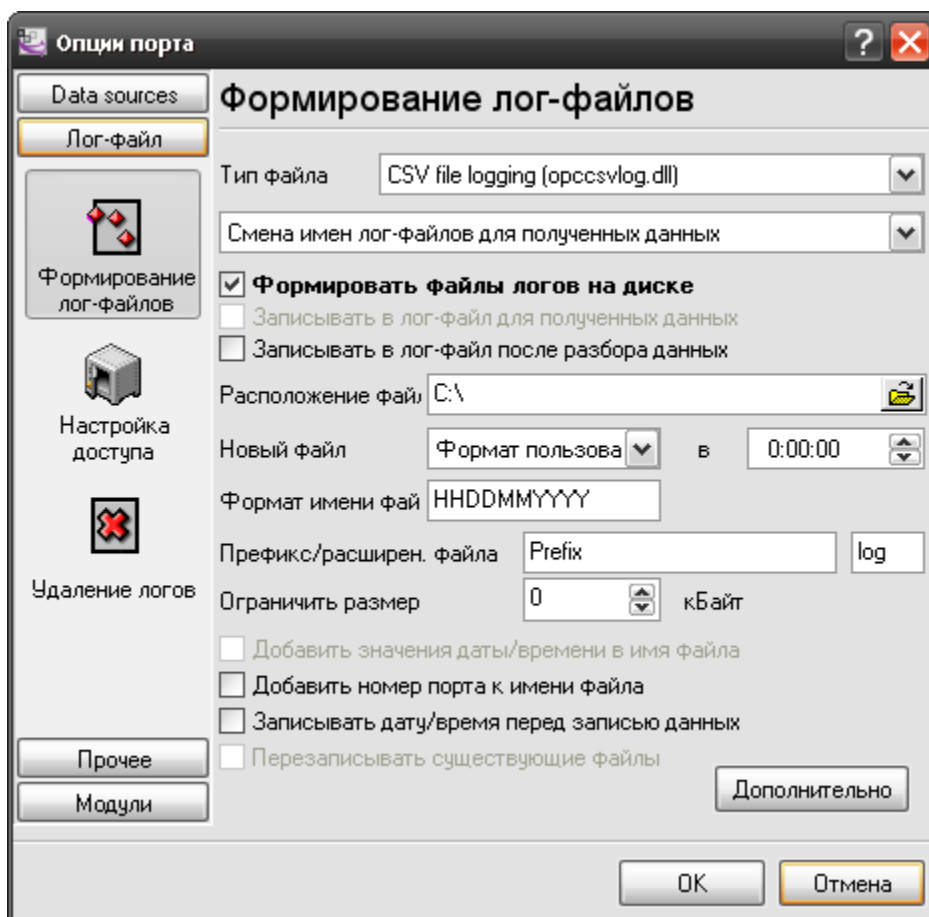
yyyy - (0000 - 9999);  
h - (0 - 23);  
hh - (00 - 23);  
n - (0 - 59);  
nn - (00 - 59);  
s - (0 - 59);  
ss - (00-59).  
:  
"sample\_log", "txt".  
:  
= sample\_log\_, = txt (!).  
HHDDMMYYYY.

4.4.3.2

(.1).  
Microsoft Office (, Microsoft Word), Advanced OPC Data Logger







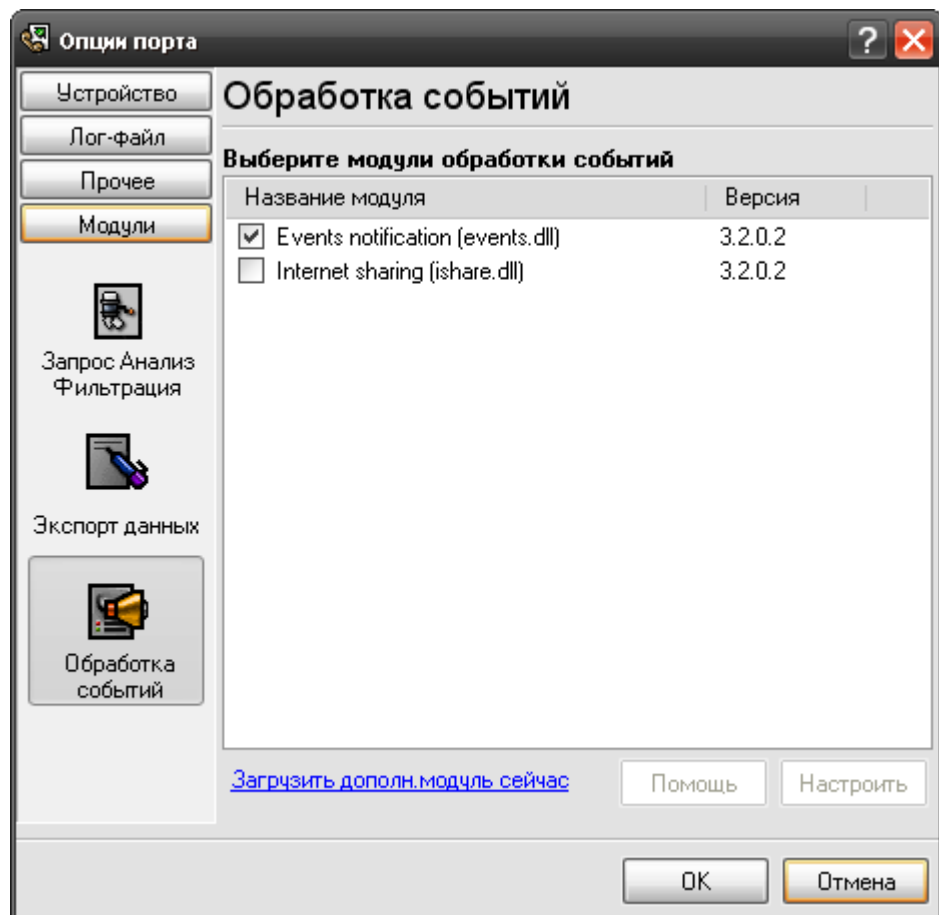
.1 CSV

#### 4.4.4

##### 4.4.4.1

Advanced OPC Data Logger

(.12) -  
Advanced OPC Data Logger.



.12



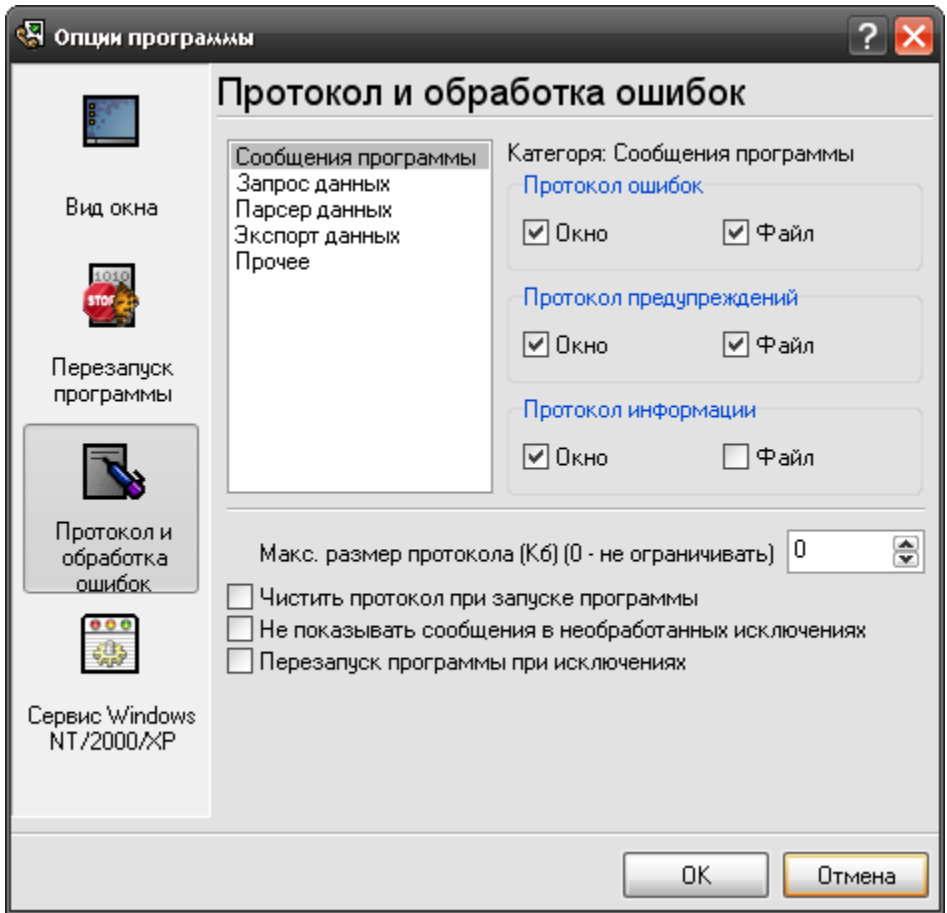
- - Windows 2000 Windows XP



## 4.6

## 4.7

.log.



.1

Advanced OPC Data Logger

3-

:

- - ; ,
- - ;
- - , ;
- - ;
- - ;
- - ;
- - ;
- - ;
- - ;

/

"

"

Advanced OPC Data Logger

## 4.8 Windows NT/2000/XP/Vista

### 4.8.1

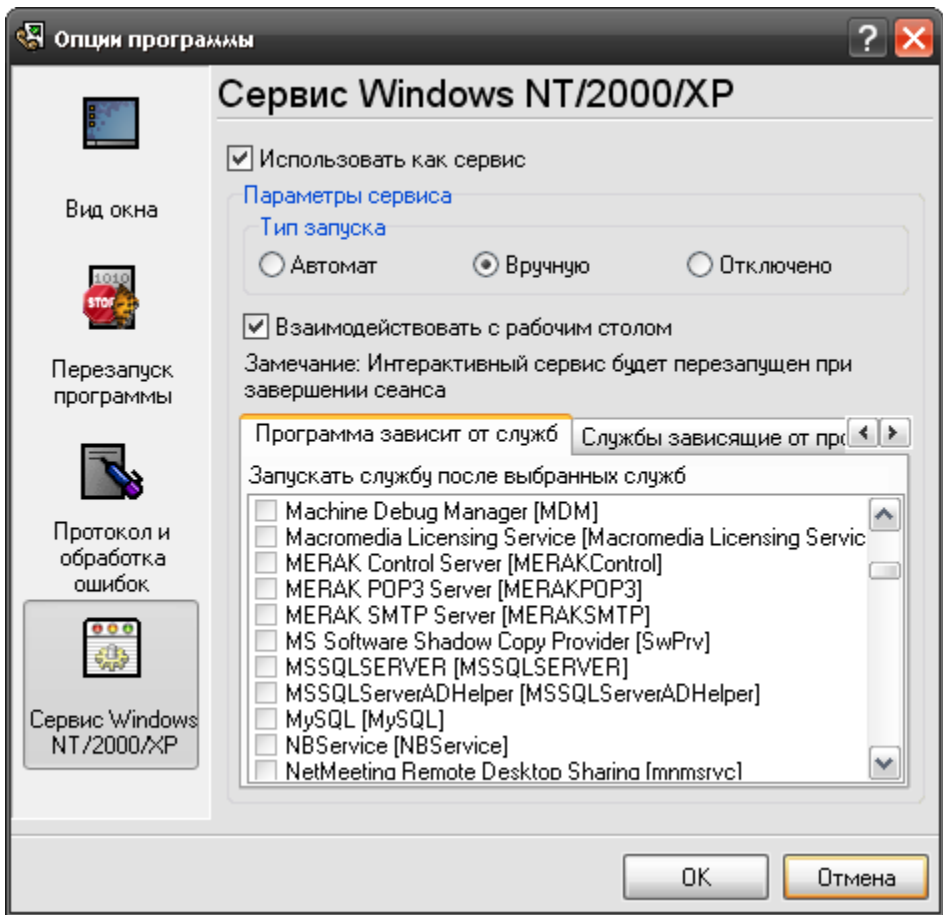
Windows NT/2000/XP :

- Windows NT 4.0;
- 2000 );
- Windows 2000 (
- );
- - (

:

).

Windows NT/2000/XP" ( .1).



.1

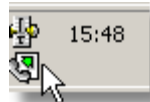
- 1.
- 2.
- 3.

Windows

"

(.2).

Windows



.2

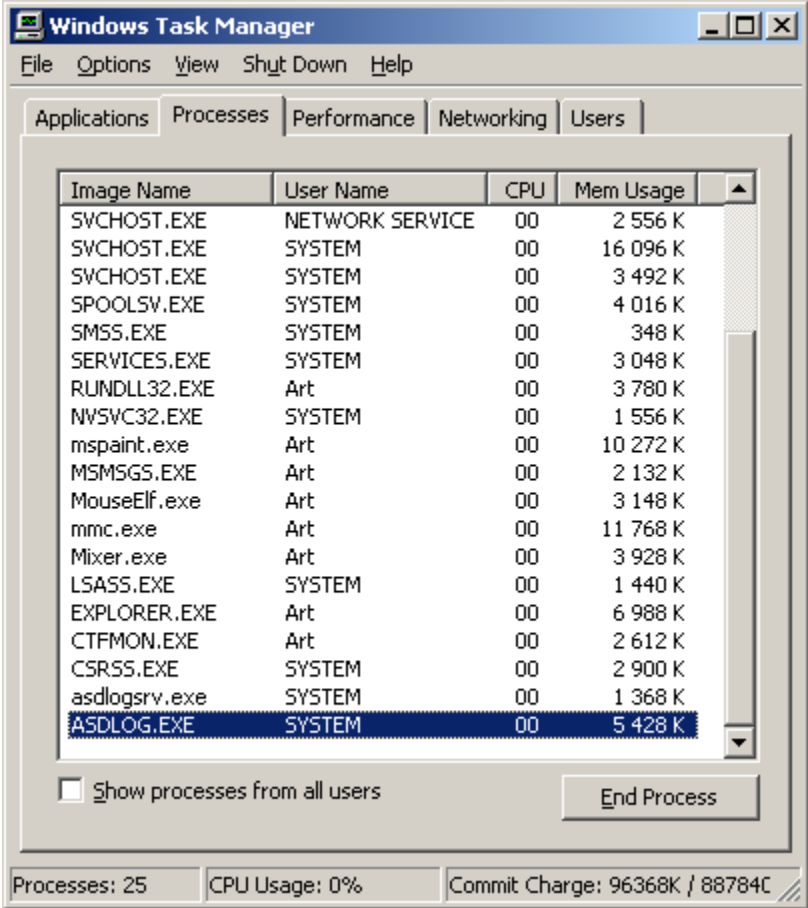
COM-

Advanced OPC Data Logger

" (.1).

(.3).





.4

opcloggersrv.exe :

- /? - ;
- /I - ;
- /A - ;
- /D - ;
- /R - ;

4.8.2

Windows Vista

Windows Vista



4.10

Windows. / COM-

5

?

5.1

SoftIce

[support@aggsoft.ru](mailto:support@aggsoft.ru)