



1		3
1	3
2	3
3	4
4	5
2		5
1	5
2	6
3		6
1	6
2	8
3	9
4	10
5	12
	12
	()	14
	14
	15
	e-mail	15
	16
6	17
	PAD FTP	17
	()	18
	,	19
	PAD	21
	" "	21
	" "	22
	" "	23
	" "	24
	" "	24
	24
	26
7	26
8	26
9	27
4	?	28
1	28
2	FAQ	28

1

1.1

- (). (Submit)
- : PAD XML, Shareware-
-); ASP (
- 80% ;
- ();
- PAD XML:
- ASP;
- ;
- Windows 9x/2000/NT/XP.

1.2

- Fast Submit PAD PAD (XML DIZ Info). Fast Submit
- Fast Submit ASP PAD.
- PAD ,
- PAD
- Fast Submit XML ASP.
- Submit Internet Explorer 5 XML- (Fast
- ,
- ,

2.2

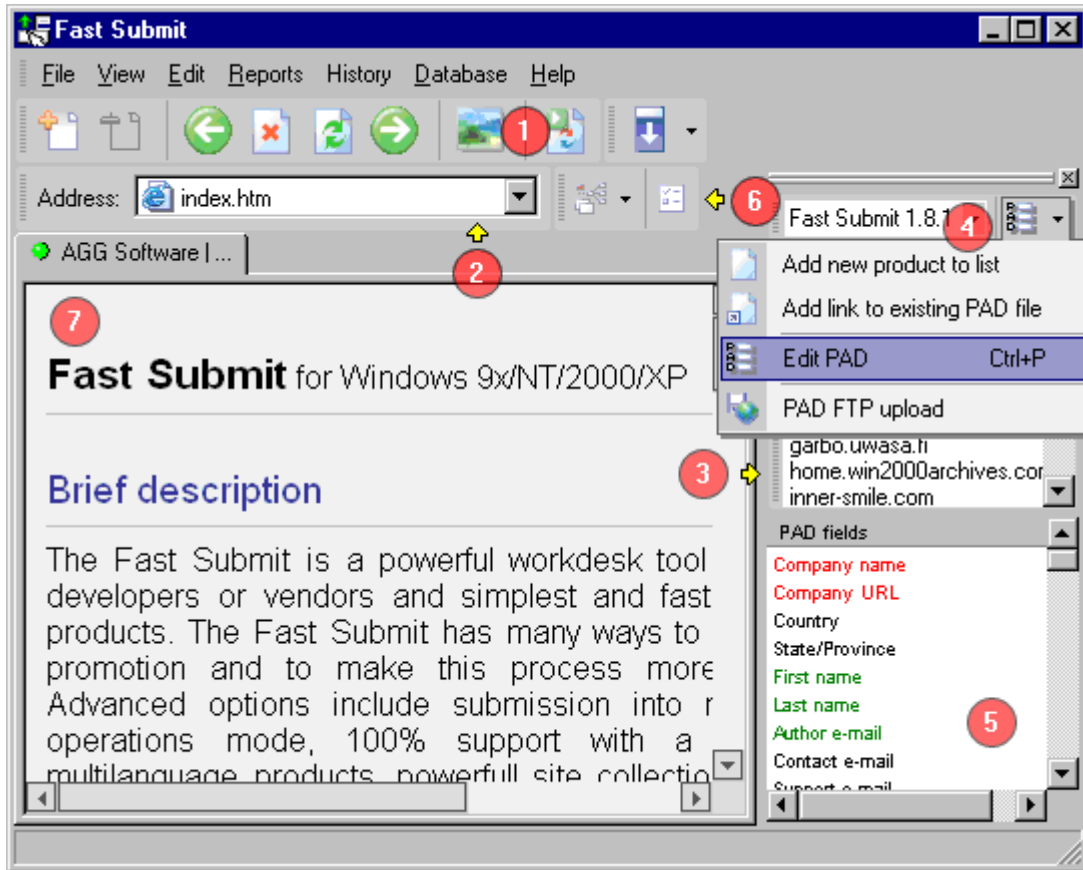
FastSubm.exe.

, Fast Submit
"/Programs Files/Fast Submit"
Fast Submit
sites.xml.  26

3

3.1

(1), (2),
(3), (4),
(5), (6) (7) (. .1)



.1

()

1. (-).
 - ;
 - () ;
 - ;
 - , ;
 - ;
 - / ;
 - " " ;
 - ;
2. - URL , _____¹⁴;
3. - " " , 99-
 100% _____¹⁰ 7;
4. _____⁹ , PAD PAD Desc.
 PAD _____

- 5. ;
- 6. / 12
- 7. (. .) ; ; Internet Explorer, ; ; (. 2).



. 2.

6

3.2

Edit|Internet preferences

- Internet Explorer,
- 1. PAD 9;
- 2. 6;
- 3. 14;
- 4. (,) ;
- 5. " " (.1). 27
- 6. " 9 ; ;
- 7. " () ; ;
- 8.



.1.



3.3

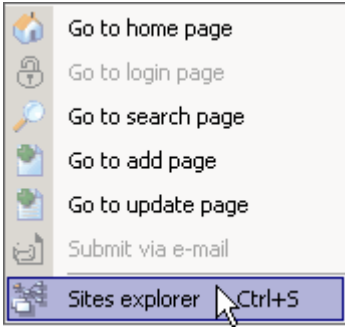
100%
)
). [ASP](#) ([PAD XML](#) (
(
.1):
•
•
Add new product to list. PAD
Import. PAD
Remove extension. Add extension. ASP,
Fast Submit,
: RegNow RegSoft ID
"OK".
"PAD XML file name"
ASP,
WINDOWS -1251),
PAD.
[File|Delete](#)
!
[File|Save As](#)

3.4

shareware-
Fast Submit
Sites explorer.

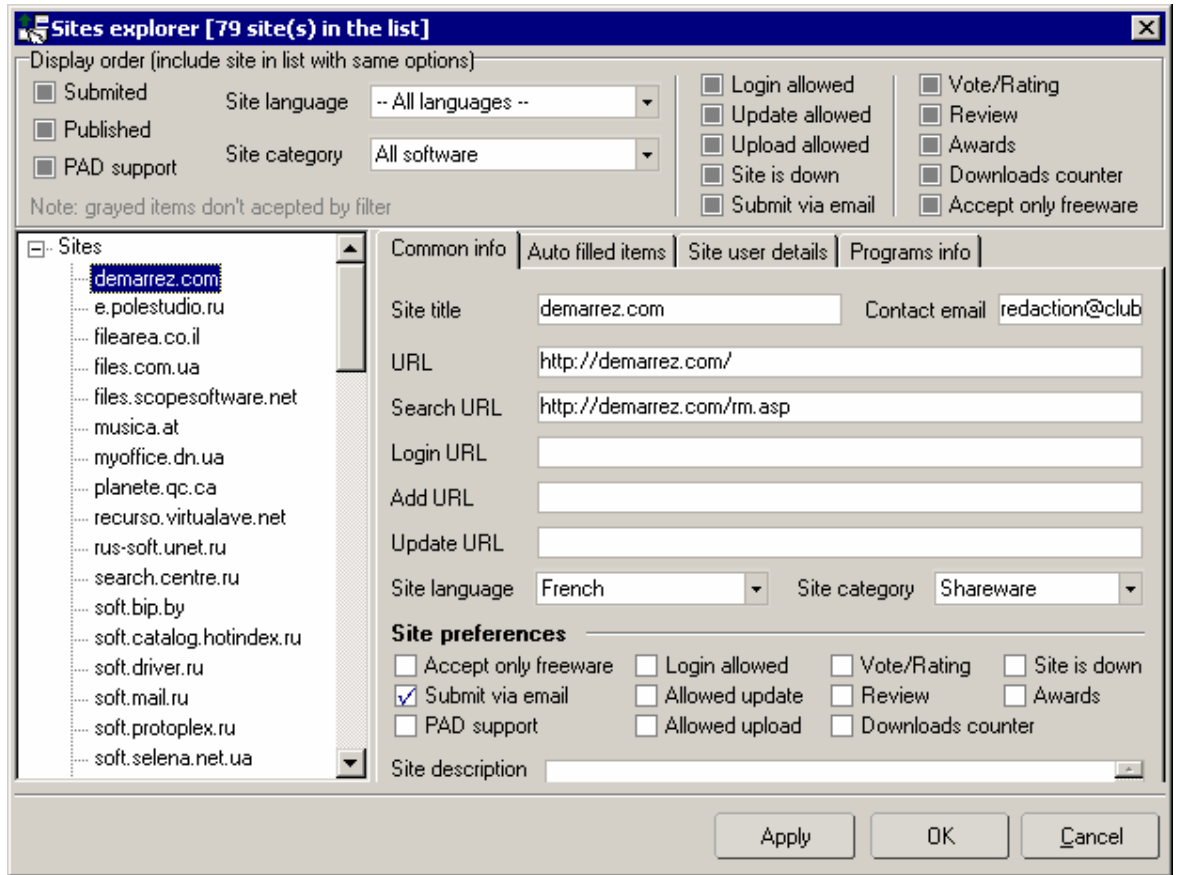
Sites explorer ;
: (.1)

"Sites explorer".
[Ctrl+S].



.1.
Sites explorer

1. "Sites explorer"
(.1).
2. (.2)
3. (Remove- Add-).
(.2)



.2.

"Common info"

"Site title"

"Site category"

"PAD support"

14

"Auto filled items" (.3)

Fast Submit

14

18

"Site user details"

(.4)

(.3).



.3.

Site info	
Site login	<input type="text" value="login here"/>
Site password	<input type="text" value="password here"/>
Rating	<input type="text" value="4"/>
Miscellaneous info (ID etc.)	<input type="text" value="asp"/>
Program info	
<input checked="" type="checkbox"/> Submitted	<input type="checkbox"/> Published
Login or ID	<input type="text"/>
Password	<input type="text"/>
Last submitted	<input type="text" value="11.09.2002 21:00:0"/>

.4.

"Programs info"

(Published -
).

, Submitted -

!

"Apply"

"OK".

3.5

3.5.1



40 PAD

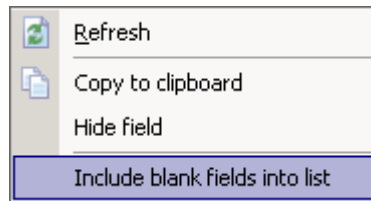
(.1).
Edit|Fast Submit options
PAD|PAD fields.

PAD

Visible / Name	Color	Auto fill out
<input checked="" type="checkbox"/> Company name	Red	Enabled
<input checked="" type="checkbox"/> Company URL	Red	Enabled
<input checked="" type="checkbox"/> Address 1	Black	Enabled
<input checked="" type="checkbox"/> Address 2	Black	Enabled
<input checked="" type="checkbox"/> City/Town	Black	Enabled
<input checked="" type="checkbox"/> Country	Black	Enabled
<input checked="" type="checkbox"/> State/Province	Black	Enabled
<input checked="" type="checkbox"/> Zip code	Black	Enabled
<input checked="" type="checkbox"/> First name	Green	Enabled

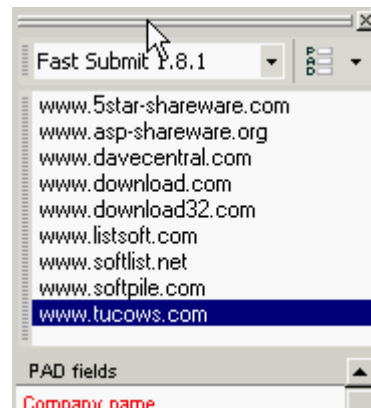
.1.

.2.



.2.

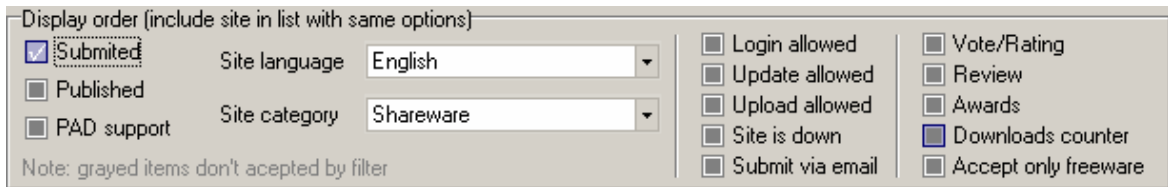
(.3)



.3.

3.5.2

1. [Sites explorer](#)^[10];
2. (.1)

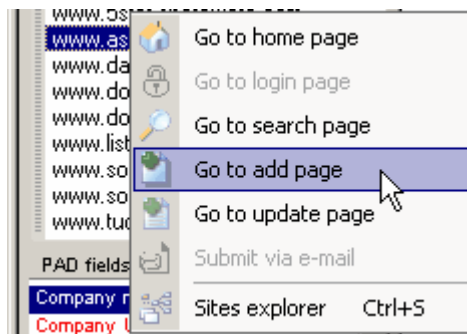


.1.

(, PAD Support - PAD XML . .).

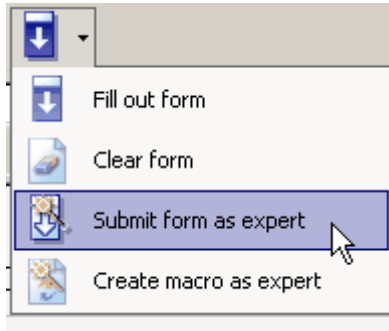
3.5.3

1. ;
2. (.1) , ;
3. ;
4. [27](#) , ;
5. " [15](#) ;
6. " () .



.1.

(.2). Fast Submit



.2.

3.5.4

"Drag&Drop"
 PAD.
 URL
 PAD
 (.1 "_____").
 PAD
 " ()


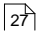

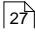
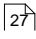
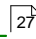
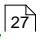
3.5.5

e-mail

e-mail.
 Forms,

1. .eml.
2. .msg.
3. Simple MAPI.
 . Fast Submit
 Microsoft Outlook Microsoft Outlook Express.

3.5.6

- 1.
- 2.
- 3. "Alt"
- 4.
- 5. [_____](#)  [Default login and](#)
- 6. [password.](#) [PAD](#)
- 7. [_____](#)  [Manual submit.](#)
- 8. [_____](#)  [Expert mode.](#) [Fast Submit.](#) [_____](#) 
- 9. [Submission process.](#) [Disable bad URLs](#)
- 10. [Submission process.](#) [Show site description](#) [_____](#) 
- 11. [Submission process.](#) [Change program submit date](#) [_____](#)  [User interface](#)
- 11. [Highlighting.](#) [_____](#) 

3.6

3.6.1

PAD

FTP

PAD

PAD

PAD XML file

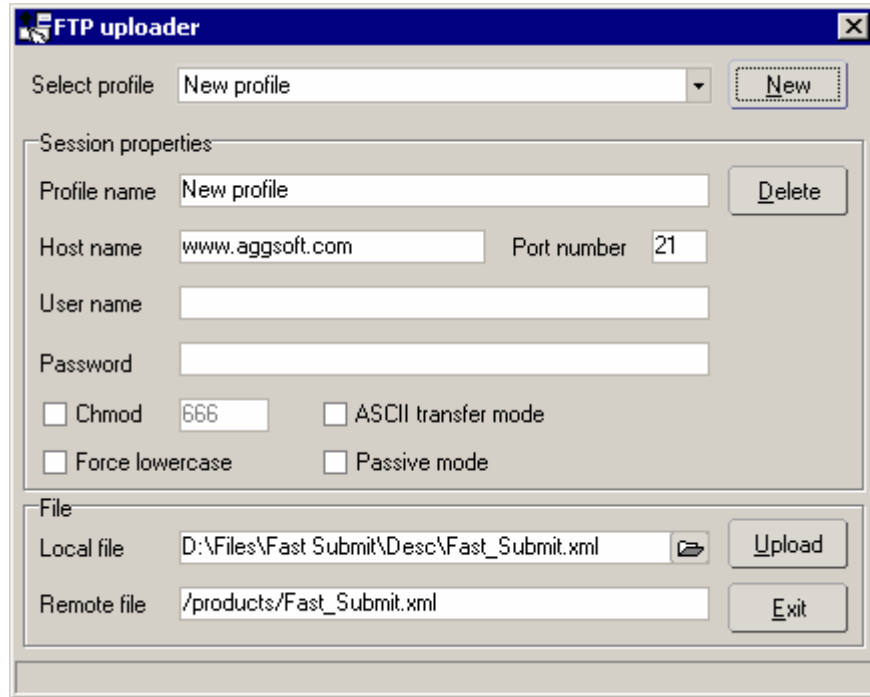
PAD

PAD.
PAD

Web info.

FTP

(.1). PAD FTP upload,



.1. FTP

1. New,
 2. Profile name.
 3. name password. FTP , : host name, port number, user
 4. PAD
 5. Upload. FTP
- FTP,
- Done....

FTP

3.6.2

()

- 1. _____ [10];
- 2. _____ ;
- 3. "Auto filled items";
- 4. _____ [12]
- 6. _____ ; "Clear list"
- 7. (.1);
- 8. _____ [15]
- 9. ;
- 10. ;



.1.

(.2).



.2.

_____ [26]

Database|Upload database

rs232, RS232, sniffer, developer, serial, spy", :
 _English_Keywords@1 = **hardware**
 _English_Keywords@2 = **com**
 _English_Keywords@3 = **rs232**
 _English_Keywords@4 = **RS232**

" (radiobutton)"?

3.6.4

PAD

3.6.4.1

- Company_Name = Company name [Contains company name, if the author does not have a company name they should have entered their own name under this field]
- Company_WebSite_URL = Company URL [Should contain the basic URL to access the company's web site]
- Address_1 = Address 1 [First line of the mailing address]
- Address_2 = Address 2 [Second line of the mailing address]
- City_Town = City/Town [The city, town or village where the author resides should appear in this field]
- Country = Country [The state, province or region]
- State_Province = State/Province
- Zip_Postal_Code = Zip code [Zip or Postal code]
- Author_First_Name = First name [Author's first name]
- Author_Last_Name = Last name [Author's last name]
- Author_Email = Author e-mail [Email address that should be used to contact the author]
- Contact_First_Name = First name [First name of the person that should be used to contact the company regarding this product]
- Contact_Last_Name = Last name of the person that should be used to contact the company regarding this product]
- Contact_Email = Contact e-mail [Email address of the person that should be used to contact the company regarding this product]
- Support_Email = Support e-mail [Email address where technical support inquiries should be directed]
- Sales_Email = Sales e-mail [Email address where sales inquiries should be directed]
- General_Email = General e-mail [Email address where technical support inquiries should be directed]
- Support_Phone = Support phone [Phone number where technical support inquiries should be directed]
- Sales_Phone = Sales phone [Phone number where sales inquiries should be directed]
- Fax_Phone = Fax phone [Phone number where faxes should be directed]
- General_Phone = General phone [Phone number where sales inquiries should be directed]

- Program_Name = Program name [Contains the full name of the program]
- Program_Version = Version [The version number of the product, should NOT contain the 'v.' characters. Numbers and/or dots only!]
- Program_Install_Support = Install support
- Program_Language = Language
- Program_Categories = Possible categories (sep .) [Categories the author feels best fits the program]
- Program_System_Requirements = System requirements [Minimum system requirements for the program to function properly]
- Program_Type = Type
- Program_Release_Status = Release status
- Program_OS_Support = OS support
- Program_Specific_Category = Specific category
- Program_Change_Info = Recent changes [What has changed since the last release]
- Program_Release_Month = Release date (month) [Month of the program release 2 digit (01-12)]
- Program_Release_Day = Release date (day) [Day of the program release. 2 digit (01-31)]
- Program_Release_Year = Release date (year) [Year of the program release. 4 digit]
- _ProgReleaseDate = Release date
- Program_Cost_Dollars = Cost (US\$) [The cost of the program in dollars. Should NOT include the '\$' character]
- Program_Cost_Other = Cost other (code, value) [Price of product in an alternative currency, currency symbol should be included]
- Has_Expire_Info = Has expire info [Used to determine if the program has expiration parameters]
- Expire_Based_On = Expire based on
- Expire_Count = Num. of uses/days [The number of days or uses until program expires]
- Expire_Month [Date that the program will expire. 2 digit of month (01-12)]
- Expire_Day [Date that the program will expire. 2 digit day (01-31)]
- Expire_Year [Date that the program will expire. 4 digit year]
- Expire_Other_Info = Expire other info [Other important information regarding expiration of the program]
- _Full_Expire_Info
- File_Size_Bytes = File size (in bytes) [The size of the distribution file in bytes]
- File_Size_K = File size (in Kbytes) [The size of the distribution file in Kilobytes]
- File_Size_MB = File size (in Mbytes) [The size of the distribution file in Megabytes]
- Filename_Long = Long filename [Preferred long filename that should be used for the program]
- Filename_Generic = Generic filename [Program name should be the 6.3 generic name, without the version number]
- Filename_Versioned = Versioned filename [Versioned program name should be the 8.3 generic name, the last 2 characters of the first portion of the name should be the version number]
- Filename_Previous = Previous filename [Previous program name should be the 8.3 generic name, but have previous version number for the last 2 characters of the first portion of the name should be the version number]
- Includes_JAVA_VM = Includes JAVA VM [Indicates the program includes the necessary JAVA Virtual Machine]
- Includes_VB_Runtime = Includes VB runtime [Indicates the program includes the necessary VB Runtime module]
- Includes_DirectX = Includes DirectX [Indicates the program includes the necessary DirectX drivers]

- _English_Keywords = English keywords
- _English_Char_Desc_45 = English short desc. (45 char)
- _English_Char_Desc_80 = English small desc. (80 char)
- _English_Char_Desc_250 = English medium desc. (250 char)
- _English_Char_Desc_450 = English large desc. (450 char)
- _English_Char_Desc_2000 = English full desc. (2000 char)
- _Spanish_Keywords = Spanish keywords
- _Spanish_Char_Desc_45 = Spanish short desc. (45 char)
- _Spanish_Char_Desc_80 = Spanish small desc. (80 char)
- _Spanish_Char_Desc_250 = Spanish medium desc. (250 char)
- _Spanish_Char_Desc_450 = Spanish large desc. (450 char)
- _Spanish_Char_Desc_2000
- _French_Keywords = French keywords
- _French_Char_Desc_45 = French short desc. (45 char)
- _French_Char_Desc_80 = French small desc. (80 char)
- _French_Char_Desc_250 = French medium desc. (250 char)
- _French_Char_Desc_450 = French large desc. (450 char)
- _French_Char_Desc_2000 = French full desc. (2000 char)
- _German_Keywords = German keywords
- _German_Char_Desc_45 = German short desc. (45 char)
- _German_Char_Desc_80 = German small desc. (80 char)
- _German_Char_Desc_250 = German medium desc. (250 char)
- _German_Char_Desc_450 = German large desc. (450 char)
- _German_Char_Desc_2000 = German full desc. (2000 char)
- _Italian_Keywords = Italian keywords
- _Italian_Char_Desc_45 = Italian short desc. (45 char)
- _Italian_Char_Desc_80 = Italian small desc. (80 char)
- _Italian_Char_Desc_250 = Italian medium desc. (250 char)
- _Italian_Char_Desc_450 = Italian large desc. (450 char)
- _Italian_Char_Desc_2000 = Italian full desc. (2000 char)
- _Japanese_Keywords = Japanese keywords
- _Japanese_Char_Desc_45 = Japanese short desc. (45 char)
- _Japanese_Char_Desc_80 = Japanese small desc. (80 char)
- _Japanese_Char_Desc_250 = Japanese medium desc. (250 char)
- _Japanese_Char_Desc_450 = Japanese large desc. (450 char)
- _Japanese_Char_Desc_2000 = Japanese full desc. (2000 char)
- _ChineseTraditional_Keywords = ChineseTrdl. keywords
- _ChineseTraditional_Char_Desc_45 = ChineseTrdl. short desc. (45 char)
- _ChineseTraditional_Char_Desc_80 = ChineseTrdl. small desc. (80 char)
- _ChineseTraditional_Char_Desc_250 = ChineseTrdl. medium desc. (250 char)
- _ChineseTraditional_Char_Desc_450 = ChineseTrdl. large desc. (450 char)
- _ChineseTraditional_Char_Desc_2000 = ChineseTrdl. full desc. (2000 char)
- _ChineseSimplified_Keywords = ChineseSmpl. keywords
- _ChineseSimplified_Char_Desc_45 = ChineseSmpl. short desc. (45 char)
- _ChineseSimplified_Char_Desc_80 = ChineseSmpl. small desc. (80 char)
- _ChineseSimplified_Char_Desc_250 = ChineseSmpl. medium desc. (250 char)
- _ChineseSimplified_Char_Desc_450 = ChineseSmpl. large desc. (450 char)
- _ChineseSimplified_Char_Desc_2000 = ChineseSmpl. full desc. (2000 char)
- _Russian_Keywords = Russian keywords
- _Russian_Char_Desc_45 = Russian short desc. (45 char)

- `_Russian_Char_Desc_80` = Russian small desc. (80 char)
- `_Russian_Char_Desc_250` = Russian medium desc. (250 char)
- `_Russian_Char_Desc_450` = Russian large desc. (450 char)
- `_Russian_Char_Desc_2000` = Russian full desc. (2000 char)
-

3.6.4.4

" "

- `Primary_Download_URL` = Primary download URL [Primary download URL where customers can download the program]
- `Secondary_Download_URL` = Secondary download URL [Secondary download URL where customers can download the program]
- `Additional_Download_URL_1` = Additional URL #1 [Another additional download URL where customers can download the program]
- `Additional_Download_URL_2` = Additional URL #2 [Another additional download URL where customers can download the program]
- `Application_Info_URL` = Application info [The URL used to point people to get more information about the program]
- `Application_Order_URL` = Application order [The URL used to point people to order the program]
- `Application_Screenshot_URL` = Screenshot [The URL used to access a screenshot of the program]
- `Application_Icon_URL` = Program icon [The URL used to access the icon used for the program]
- `Application_XML_File_URL` = PAD XML file [The URL used to access the XML DIZ Info in the future]

3.6.4.5

" "

- `Distribution_Permissions` = Distribution agreements [Contains distribution permissions given by the author to vendors and other distributors]
- `EULA` = End user license agreement [Contains the end user license agreement for the program]

3.6.4.6

Fast Submit

- `RegSoft_Product_ID` = RegSoft ID
- `RegNow_Product_ID` = RegNow ID
- `RegSoft_Order_Page` = RegSoft order URL [The URL used to point people to order the program]
- `RegNow_Order_Page` = RegNow order URL [The URL used to point people to order the program]
- `Comments_For_Reviewer` = Comments for reviewer

Delphi

- `DELPHI_D1` = Delphi 1 supported

- DELPHI_D1_URL = Delphi 1 download URL [Download URL]
- DELPHI_D2 = Delphi 2 supported
- DELPHI_D2_URL = Delphi 2 download URL [Download URL]
- DELPHI_D3 = Delphi 3 supported
- DELPHI_D3_URL = Delphi 3 download URL [Download URL]
- DELPHI_D4 = Delphi 4 supported
- DELPHI_D4_URL = Delphi 4 download URL [Download URL]
- DELPHI_D5 = Delphi 5 supported
- DELPHI_D5_URL = Delphi 5 download URL [Download URL]
- DELPHI_D6 = Delphi 6 supported
- DELPHI_D6_URL = Delphi 6 download URL [Download URL]
- DELPHI_BCB1 = BCB1 supported
- DELPHI_BCB1_URL = BCB1 download URL [Download URL]
- DELPHI_BCB3 = BCB3 supported
- DELPHI_BCB3_URL = BCB3 download URL [Download URL]
- DELPHI_BCB4 = BCB4 supported
- DELPHI_BCB4_URL = BCB4 download URL [Download URL]
- DELPHI_BCB5 = BCB5 supported
- DELPHI_BCB5_URL = BCB5 download URL [Download URL]
- DELPHI_K1 = Kylix 1 supported
- DELPHI_K1_URL = Kylix 1 download URL [Download URL]
- DELPHI_Type = Component type
- DELPHI_Price = Price with source
- DELPHI_Source = Source availability
- DELPHI_File_Location = File location
- DELPHI_Link_URL = Exact URL to the file [For link to your file, enter exact URL to the file]
- DELPHI_Download_URL = Permanent URL to the file [If you want us to download the file, enter permanent URL to the file]
- DELPHI_Version = Version this file replaces [Version this file replaces (if any) that should be removed from our site]
- DELPHI_Notes = Notes

ASP

- ASP_Member = I am an ASP member
- ASP_Member_Number = ASP member number

ESC

- ESC_Member = I am an ESC member

MSN

- MSN_IS_32bit = The MSN Shareware Forum only accepts true 32 bit applications. I certify that my submission is a true 32 bit application

TPA

- TPA_Member = My company is a TPA member
- TPA_Member_ID = TPA member ID
- Trial_License_Type = TPA trialware license type

3.6.5

04, ., april . . .

values.

Edit|Fast Submit options
PAD|Language related

3.7

- Submission report -
- Sites collection -
- Submission report (large) -
- Password and login -

Published Submitted;

_____ [14]

_____ [14]

Reports

Reports.

3.8

Fast Submit XML,

PAD XML

, Microsoft Explorer 5.0

Fast Submit

Reports|Update local database

file

Reports|Update local database from

Reports|Upload a self-created database

3.9

options.

(.1),

Edit|Fast Submit



.1.

4

?

4.1

SoftIce

support@aggsoft.ru

4.2 FAQ

:

Fast Submit,

?

SoftIce